

SOUTH AMERICA - GALAPAGOS 4 DAY CRUISE C | CORAL I & II



INTRODUCTION

This 4 day cruise will immerse you in the beautiful scenery and immense wildlife of the Galapagos. On board your coral yacht you will find the perfect blend of classical beauty and exquisite style. Find yourself in the Amazing wildlife offerings of the Islands, including seals, tortoise, marine iguanas and many other endemic species. Prepare to lose yourself in the crown jewel of the natural world.

ITINERARY

TRIP CODE

ECTSC4C

DEPARTURE

Selected Sundays

DURATION

4 Days

LOCATIONS

Galapagos Islands, Ecuador



SOUTH AMERICA - GALAPAGOS 4 DAY CRUISE C | CORAL I & II

DAY 1: Baltra Airport & North Seymour Island

Take a flight from Quito or Guayaquil to Baltra. The flight from Quito to the Galapagos is approximately 2 ½ hours and from Guayaquil approximately 1 ½ hours. Arriving in the Galapagos, passengers are met at the airport by our naturalist guides and driven ten minutes by bus to the pier to board the M/Y Coral I or M/Y Coral II. In the afternoon you will have a dry landing at North Seymour, located just off Baltra Island and not far from Santa Cruz. This landmass was formed by a series of underwater volcanic eruptions, which deposited layers of lava on the ocean floor. An approximately two-hour walk amidst large nesting colonies of blue-footed boobies, magnificent and great frigate birds, and swallow-tailed gulls for an in-depth encounter with sea bird breeding cycles and sea lions. You will also encounter land iguanas, and on a lucky day, you might even come across the endemic Galapagos Snake.



DAY 2: Charles Dawin Research Statction & Mosquera Islet

In the morning we will visit Charles Darwin Research Centre on Santa Cruz Island. Once home to the famous Lonesome George, the last tortoise of the Pinta race, the breeding and relocation centre is named in honour of his long-time guardian. The centre is set in the Galapagos National Park Service where various interpretative buildings are available to visit. The grounds, with large stands of native vegetation, are one of the better places to spot some of the Darwin finches including the woodpecker, cactus, and vegetarian finches. In the afternoon you will arrive at Mosquera Islet. This tiny, low lying islet, covered in coral sand, is set between North and South Seymour Islands. It is home to a group of sea lions that come to laze on the soft white sand. It is a good spot to observe shorebirds as well as herons, lava gulls, and boobies. Snorkelling or diving here one can often see sharks, rays, and barracudas.



TRIP CODE

ECTSC4C

DEPARTURE

Selected Sundays

DURATION

4 Days

LOCATIONS

Galapagos Islands, Ecuador



SOUTH AMERICA - GALAPAGOS 4 DAY CRUISE C | CORAL I & II

DAY 3: Santa Fe Island & South Plaza Islet

In the morning you will arrive at Santa Fe island. After a fabulous snorkel in the turquoise waters of the protected bay, we may have enjoyed time with sea lions, turtles, reef sharks and spotted eagle rays. Landing onto a sandy beach we are immediately distracted by the abundant sea lions there with us. We begin a walk past a forest of island-endemic giant Opuntia cacti. Here we search for another island-endemic the Santa Fe land iguana, paler than its cousins on other islands. Galapagos hawks and even endemic rice rats are also things to look out for. In the afternoon you will head for South Plaza Islet for a dry landing. There are two plaza islets (north and south) located east of Santa Cruz Island. On the northern part of the Islet, visitors begin the journey along an impressive cactus forest where colourful yellow and red land iguanas live, the population number is around 300 animals; during the dry season, they survive on fruits and flowers of the opuntia cacti. A peculiar thing to see in South Plaza is the hybrid iguana (sea and land). When reaching the highest point, tropicbirds can also be seen. During the dry season (June - January) the usually greenish and yellowish vegetation changes colour creating a bright red landscape which is a great sight to see in this area.



TRIP CODE

ECTSC4C

DEPARTURE

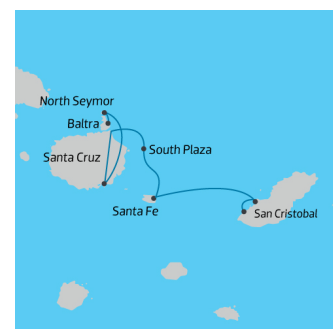
Selected Sundays

DURATION

4 Days

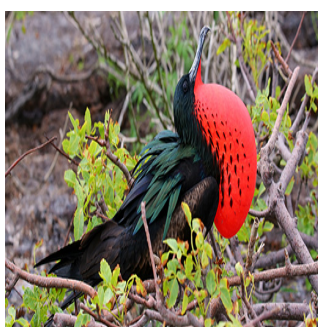
LOCATIONS

Galapagos Islands, Ecuador



DAY 4: Lobos Island & San Cristobal Airport


For you last excursion this morning, we arrive to Isla Lobos which is approximately 20 minutes by boat from Puerto Baquerizo Moreno. Once on the island, the trail is about 850 meters with a couple of different option to take. Witness along the way a small population of blue-footed boobies, as well as great frigatebirds nests which are located at this site. You will also find a colony of sea lions, found in the waters or frocking in the sun. During the boat ride, enjoy seeing brown pelicans and several other species of shorebirds. Afterwards you will be taken to San Cristobal Airport for a return flight to Guayaquil or Quito.



INCLUSIONS & DETAILS

SOUTH AMERICA - GALAPAGOS 4 DAY CRUISE C | CORAL I & II

Accommodation	Standard
Inclusions	<p>Shipboard accommodation All meals whilst on board including snacks All shore excursions Guiding and lectures by Galapagos Naturalist Guide English-speaking Expedition team Fuel surcharge Welcome and farewell cocktails</p> <p>Exclusions Return airfares from mainland Ecuador Galapagos National Park Entrance fee (US\$200 per person from Aug 2024 - Subject to change) Galapagos Transit Control Card (US\$20 per person - Subject to change) Visa Fees (if applicable) Travel insurance Gratuities for the crew Optional activities whilst on board</p>
Difficulty Rating	2 (light adventure)
Single Surcharge	Available upon request
Notes	Contact us for more details
Price Dependent upon	Season and Availability

TRIP CODE
ECTSC4C
DEPARTURE
Selected Sundays
DURATION
4 Days
LOCATIONS
Galapagos Islands, Ecuador


SUSTAINABILITY

Chimu Adventures undertakes a number of sustainability measures within its operations including:

- 1) Only using local guides and office staff to both maximise local employment opportunities and minimise carbon footprints. Local guides also ensure you benefit from the intimate knowledge, passion and culture of the country you’re visiting.
- 2) Where possible, using locally owned and operated boutique hotels to maximise the return to the local community.
- 3) Chimu’s “Pass it on” programme has provided funding to hundreds of local community projects in Latin America. Our aim is to empower local communities, helping them to develop their own infrastructure for the future. Since 2006, we have been working with Kiva (a well-known Non-Governmental Organisation), providing hundreds of loans to local businesses all over South America.
- 4) In our pre tour information we provide a range of tips and advice on how to minimise your impact on both local environments and communities.
- 5) Chimu Adventures’ offices also take a number of sustainability measures including carbon offsets for company vehicles and most staff travel. Chimu Adventure’s internal processes are also structures to create a paperless office and to reduce waste. There are also internal programmes to help staff minimise their carbon footprint such as our staff bike purchase assistance plan which encourages office staff to commute to work via

SOUTH AMERICA - GALAPAGOS 4 DAY CRUISE C | CORAL I & II

bicycle. Currently almost half of our office based staff commute to work via bicycle.

TRIP CODE

ECTSC4C

DEPARTURE

Selected Sundays

DURATION

4 Days

LOCATIONS

Galapagos Islands, Ecuador

