

SPITSBERGEN - EAST SPITSBERGEN | PLANCIUS



TRIP CODE

ACOWPES

DEPARTURE

20/06/2024

DURATION

8 Days

LOCATIONS

Svalbard



INTRODUCTION

CLAIM FLIGHT CREDIT OF USD\$1,000!*

Enjoy the high Arctic summer solstice on an expedition that stops at several of eastern Spitsbergen's most popular destinations. Our objective is to take you to breathtaking glaciers, intriguing historical locations, abundant seabird colonies, and vast fjord systems where there is a strong chance of seeing whales, seals, and perhaps even polar bears.

**Travel credit of USD\$1,000 is available to new bookings only, on selected departure dates only. Cabins subject to availability at the booking of booking. Credit cannot be combined with other promotions and/or discounts. One discount code per booking applies. Not redeemable for cash. Prices may be based on quad share. Please contact us for more details and availability. Offer valid until 31 May 2024 unless withdrawn prior.*

ITINERARY

DAY 1: Embark Longyearbyen

You touch down in Longyearbyen, the administrative center of Spitsbergen, the largest island of the Svalbard archipelago. Enjoy strolling around this former mining town, whose parish church and Svalbard Museum make for fascinating attractions. Though the countryside appears stark, more than a hundred species of plant have been recorded in it. In the early evening the ship sails out of Isfjorden, where you might spot the first minke whale of your voyage.



SPITSBERGEN - EAST SPITSBERGEN | PLANCIUS

DAY 2: Spectacular Hornsund

We start the day by quietly cruising the side fjords of the spectacular Hornsund area in southern Spitsbergen, enjoying the scenery of towering mountain peaks. The mountain of Hornsundtind rises to 1,431 meters (4,695 feet), while the peak of Bautaen testifies to why early Dutch explorers gave this island the name Spitsbergen, meaning “pointed mountains.” There are 14 magnificent glaciers in the area, and we have a fair chance of encountering seals and polar bears. The nearby cliffs of Sofiakammen are also home to thousands of pairs of nesting kittiwakes and little auks, and in the evening, we might see thousands of harp seals rutting on ice floes at Sørkapp.



DAY 3: Diskobukta

After navigating the drift ice of Storfjorden, where we sometimes see harp seals, we land in northwest Edgeøya at the northern bank of Rosenberdalriver. Here on the raised beach, we have the opportunity of walking to Rosenbergdalen, which is teeming with grazing reindeer. Afterward we plan to walk by a cliff with nesting black guillemots on our way to Strethamna, where we often find a herd of walruses on the beach near an octagonal trapper’s cabin built in 1905. We can also see the remains of a 19th-century Pomor house as well as the bones of walruses hunted in previous centuries.



DAY 4: Barentsøya

Sailing into the waterway of Freemansundet, we plan to land at the tundra lowland of Sundneset, on the island of Barentsøya. Here we will visit the hut of a German scientific expedition (Würzbugerhütte) from sixty years ago, then take a brisk walk across the tundra in search of Spitsbergen reindeer and barnacle geese. After that, we plan to go on a Zodiac cruise near Freeman Glacier and visit a kittiwake colony in a canyon close by. In case of heavy ice in Freemandundet, however, we will instead sail to Negribreen, one of the most extensive glacier fronts on the east side of Spitsbergen. Here we can take a Zodiac cruise and land on Walrus Island, which became ice-free at the end of last century.



TRIP CODE

ACOWPES

DEPARTURE

20/06/2024

DURATION

8 Days

LOCATIONS

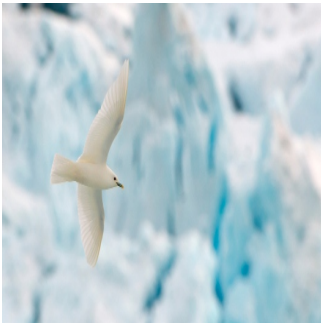
Svalbard



SPITSBERGEN - EAST SPITSBERGEN | PLANCIUS

DAY 5: West Spitsbergen

Today we sail to the east side of west Spitsbergen (west side of Storfjorden). Here we plan to walk to breeding places for ivory gulls in Agardhfjellet, which stands about 300 meters (980 feet) high. The valley leading to the outcrops that house the nests is littered with fossils of belemnites and ammonites.



DAY 6: South Spitsbergen

Today we aim to land at the mountain of Stellingfjellet, near the largest colony of Brünnich’s guillemots in Spitsbergen. Later in the day, we will make landings at the rarely visited coast of south Spitsbergen, at the bay of Isbukta.



DAY 7: Bellsund

We continue our voyage in Bell Sund, one of the largest fjord systems in Svalbard. The ocean currents make this area slightly warmer than other areas in the archipelago, which shows in the relatively lush vegetation. Here there are excellent opportunities to enjoy both history and wildlife. A possibility is Ahlstrandhalvøya, at the mouth of Van Keulenfjorden, where piles of beluga skeletons can be found. These remains of 19th-century whale slaughter are a haunting reminder of the consequences of rampant exploitation. Fortunately, belugas were not hunted into extinction, and you have a good chance of coming across a pod. Alternately, while cruising the side fjords of Bellsund, we can explore tundra where reindeer like to feed as well as rock slopes where little auks are breeding.



TRIP CODE

ACOWPES

DEPARTURE

20/06/2024

DURATION

8 Days

LOCATIONS

Svalbard



SPITSBERGEN - EAST SPITSBERGEN | PLANCIUS

DAY 8: Disembark in Longyearbyen

Every adventure, no matter how grand, must eventually come to an end. You disembark in Longyearbyen, taking home memories that will accompany you wherever your next adventure lies.



TRIP CODE

ACOWPES

DEPARTURE

20/06/2024

DURATION

8 Days

LOCATIONS

Svalbard



INCLUSIONS & DETAILS

Accommodation	Cabin on board ship
Inclusions	<p>INCLUSIONS</p> <p>Cabin accommodation on board vessel All meals whilst on board Guiding and lectures by experienced expedition crew All scheduled landings and excursions by zodiac Landing fees Digital visual journal link after the voyage, including voyage log, gallery, species list, and more</p> <p>EXCLUSIONS</p> <p>International & Charter Flights Meals not on board the ship All items of a personal nature Customary gratuities for staff/crew Any pre or post cruise accommodation Any pre or post cruise travel extensions Travel insurance</p>
Difficulty Rating	2 (light adventure)
Single Surcharge	Available on request for some cabin categories. Subject to availability. Contact us for more details.

SPITSBERGEN - EAST SPITSBERGEN | PLANCIUS

Notes	<p><i>PLEASE NOTE:</i> All itineraries are for guidance only. Programs may vary depending on ice, weather, and wildlife conditions. Landings are subject to site availabilities, permissions, and environmental concerns per AECO regulations. Official sailing plans and landing slots are scheduled with AECO prior to the start of the season, but the expedition leader determines the final plan. Flexibility is paramount for expedition cruises. The average cruising speed of our vessel is 10.5 knots.</p> <p>Prices are based on per person, twin share* (unless otherwise stated for triple/quad cabins) Prices are correct at time of publishing but are subject to change at any time. Itinerary is subject to change depending on weather and ice conditions</p>
	<p>Prices are based on per person, twin share* (unless otherwise stated for triple/quad cabins) Prices are correct at time of publishing but are subject to change at any time. Itinerary is subject to change depending on weather and ice conditions</p>
Price Dependent upon	<p>Departure date, fuel surcharges, cabin category, currency fluctuations, seasonality and availability.</p>

SUSTAINABILITY

TRIP CODE
ACOWPES
DEPARTURE
20/06/2024
DURATION
8 Days
LOCATIONS
Svalbard
