

GREENLAND - EXPEDITION TO THE THULE REGION | LE BOREAL



INTRODUCTION

NO SINGLE SUPPLEMENT ON SELECTED DEPARTURES*

On a journey along the Baffin Bay shoreline, explore the region of Thule, the legendary homeland of the Far North. Set out on a 17-day new expedition journey to the furthest regions of the earth onboard Le Boréal from Kangerlussuaq.

You will sail through floating icebergs and sheets of ice floe while being directed by your Captain and Expedition Leader north of the Baffin Sea, in the vicinity of Thule. If you're lucky, you might catch a glimpse of one of the numerous polar bears that inhabit this pleasant setting. You will continue to pass through some of the most breathtaking scenery in the arctic region, from the glacier-softened mountains of Greenland's west coast to the steep slopes of the Arctic mountain range, and Thule's high Arctic tundra. Explore this incredible diverse fauna to see polar bears, musk ox, and Arctic wolves.

GREEN POINTS!

- â€¢ Ponant fleets are awarded the international "Clean Ship" label which proofs their reduced environmental impact
- â€¢ Refrigerant gas is used for ac and refrigeration units which minimizes impact on the greenhouse gas effect and has no impact on the ozone layer
- â€¢ Water reduction is implemented by reusing water supplies such as bath, kitchen, laundry for washing external decks
- â€¢ All wasted is separated and sorted on board
- â€¢ Dynamic positioning systems are use to drop anchor in sensitive marine environments, to minimise damage coral reefs and protecting the seabed.
- â€¢ Marine gas oil is used where possible as an alternative to heavy burning gas fuels.

**Single Supplement waived on selected departures & cabins. Offer is correct at the time of publishing and only available until sold out on selected voyages and strictly limited availability. Not available on Superior Staterooms and Owners Suite. Prices are subject*

TRIP CODE

ACPOTE

DEPARTURE

20/07/2024, 05/08/2024,
02/08/2025

DURATION

17 Days

LOCATIONS

Greenland & Canadian Arctic



GREENLAND - EXPEDITION TO THE THULE REGION | LE BOREAL

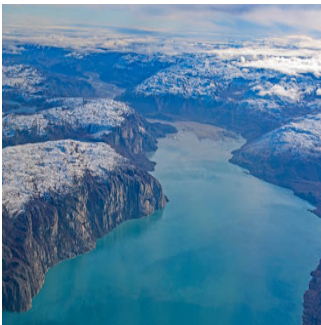
to change until the time of booking and terms and conditions apply. Please contact us for more information and enquire for details of offers and availability.

Prices are correct at time of publishing (08 Apr 2024) but are subject to change at any time until the time of booking and terms and conditions apply. Please contact us for more information and enquire for details and availability.

ITINERARY

DAY 1: Paris to Kangerlussuaq


Your cruise package includes a charter flight from Paris to Kangerlussuaq, Greenland. The flight duration is approximately 5 hours. We highly recommend you arrive in Paris the night before this flight. From 1941 to 1992, the town of Kangerlussuaq in Greenland was home to an American military base. Nowadays, thanks to its international airport, it has become a transit point for travellers seeking adventure in the Far North. Located to the north of the Arctic Circle, this town is the starting point of magnificent discoveries surrounded by unspoiled nature. Indeed, just a few dozen kilometres from there it is possible to get close to the Greenland ice sheet, the largest body of ice in the Northern Hemisphere. From Kangerlussuaq, admire also the superb landscapes of tundra in autumnal colours, where Arctic hares, musk oxen, Arctic foxes, reindeer, falcons and eagles live. Embarkation is scheduled between 4-5pm.



DAY 2: Sisimiut

During your cruise, we invite you to discover Sisimiut, founded in 1756 and the second largest town in Greenland. This small town is typical of Greenland, boasting bewitching panoramas: here and there, colourful stilt houses dot the undulating landscape, and the small fishing port stands as the gateway to an icy realm. As for the town centre, it is home to a number of historic buildings, a small church and a museum which retraces the history of the Inuit people, as well as many craft shops. When your ship drops anchor here, you will set out to meet the locals in a typically arctic atmosphere.



TRIP CODE
ACPOTE
DEPARTURE
20/07/2024, 05/08/2024, 02/08/2025
DURATION
17 Days
LOCATIONS
Greenland & Canadian Arctic


GREENLAND - EXPEDITION TO THE THULE REGION | LE BOREAL

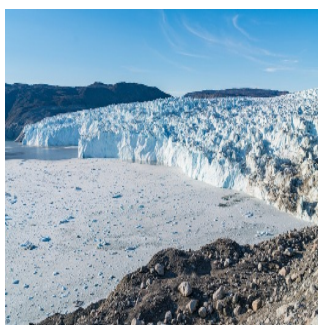
DAY 3: Disko Bay

To the east of Baffin Bay, discover Disko Bay, scattered with countless icebergs produced by the Ilulissat Icefjord, a UNESCO World Heritage Site. From your ship, admire the majestic ballet of these ice giants as they slowly drift across the dark waters. This site is a natural marvel of Greenland, and is also renowned as an observation point for the region's many humpback whales. The encounters with wild fauna and stunning landscapes in the heart of this spectacular and fragile nature will be pure moments of wonder for you.



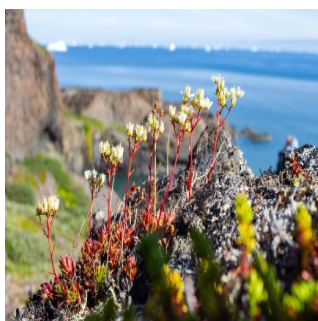
DAY 4: Eqi Glacier

'The most beautiful place in the Arctic' is how Paul-Émile Victor described Greenland, a land of great icebergs and of towering ice formations calved by the giant glaciers of the polar ice cap. The Eqi Glacier is one of the region's most impressive sights. Here, the silence is broken only by the roaring and cracking of the ice. It is impossible to know if one is shivering from cold or from the sheer thrill of being here... Imagine the vast outline of a glacier, its translucent crystals glowing with an ice-blue fire in the sunlight. Paul-Émile Victor's shelter cannot be overlooked; it was from here that the French Polar Expeditions' anthropological and geographic explorations set off in the 1950s.



DAY 5: Kuannit Coast

Opposite Ilulissat, sailing for a few hours between the majestic icebergs of Disko Bay will allow you to reach the southern coast of the large Disko Island and admire the fields of angelica and the spectacular sculptures formed by the huge volcanic cliffs of Kuannit, where numerous sea birds find refuge. Combining glaciers, snow-capped peaks, flowery valleys, lakes, beaches and volcanic formations, the island's exceptionally lush environment has inspired local beliefs. The island is believed to have a legendary and distant origin: it is said to have been towed back from the country's south by fishermen in kayaks, fastened to "the hair of a child".



TRIP CODE

ACPOTE

DEPARTURE

20/07/2024, 05/08/2024,
02/08/2025

DURATION

17 Days

LOCATIONS

Greenland & Canadian Arctic



GREENLAND - EXPEDITION TO THE THULE REGION | LE BOREAL

DAY 6: Akulleq and Karrat Fjord

In the curve of Uummannaq Bay, opposite a narrow passage between two islands, you will discover the moonscape of the small desert island of Akulleq. The ochre yellow and orange of this mineral site look ablaze under the sunshine of the polar summer. From the island’s summit you will be able to contemplate a panoramic view of the bay’s magical landscape and its huge icebergs with surprising shapes. During your cruise along the Greenland coast, we invite you to discover the Karrat Fjord. Located in the north of the famous Uummannaq Bay, it stretches out towards the ice sheet. As you sail in this exceptional setting, take the time to admire the beautiful icebergs that surround you, as well as the sheer cliffs that tower along the fjord.



DAY 7: Kullorsuaq

Well beyond the Arctic Circle, in the majestic landscapes of Greenland’s Northwest, you will find the village of Kullorsuaq, the last bastion of Greenland’s traditional hunters. Here is where you will find Greenland’s true character... Vast mineral expanses, sumptuous mountains, impressive glaciers and, above all, the local population which still lives off fishing and seal or bear hunting. Hospitality and respect for nature are essential elements in the daily lives of these men, who live an austere life. When we drop anchor in this remote part of the world, set off to discover these friendly people who are also talented craftsmen, deftly sewing the furs and skins of marine mammals. This will be a unique and authentic experience.



TRIP CODE

ACPOTE

DEPARTURE

20/07/2024, 05/08/2024,
02/08/2025

DURATION

17 Days

LOCATIONS

Greenland & Canadian Arctic



GREENLAND - EXPEDITION TO THE THULE REGION | LE BOREAL

DAY 8: Savissivik

Some places in this world are so magical that their beauty cannot be described in words... Savissivik, a small Inuit village with less than a hundred inhabitants, is one such place. Rightly considered to be the biggest iceberg graveyard in Greenland, it is a stunning sight to behold. During your Zodiac outing, you will sail between these icy giants. Once on land, you can hike to a viewpoint from which to enjoy breathtaking views over these icebergs, which come in an incredibly diverse range of shapes and colours. Photographers will love it. Savissivik Bay attracts many bears and is also known for having been the home of one of the world's biggest meteorites, but the latter has now been moved to a museum in New York.



DAY 9: Thule Region - Day 9 to 10

Thule, the region located to the northwest of Greenland, is the mythical name used to designate the Far North. The presence of many drifting icebergs calved from the glaciers of Greenland and sheets of ice floe can make sailing tricky - but spectacular - in this region. You will attempt to sail as far north as possible and if you are lucky enough you will perhaps observe one of the many polar bears that roam this favourable environment. You'll perhaps visit traditional villages such as Dundas ("old Thule") and Siorapaluk, Greenland's northernmost native settlement, where you will probably be greeted by a joyous group of children, who are always happy to welcome visitors.



DAY 11: Pond Inlet, Nunavut

On Baffin Island, located in northern Canada at the mouth of the famous NorthWest Passage, there is a small Inuit settlement at the very bounds of infinity. To get there, cross the Arctic Circle, the imaginary line that separates man from lands of mystery and wonder. It's not so much the way of life that sets Pond Inlet's inhabitants apart, so much as the setting. Snow-capped mountains, fjords and glaciers combine in a dazzling natural environment that fills space and expands time. Some discoveries change you forever: this is one of them.



TRIP CODE

ACPOTE

DEPARTURE

20/07/2024, 05/08/2024,
02/08/2025

DURATION

17 Days

LOCATIONS

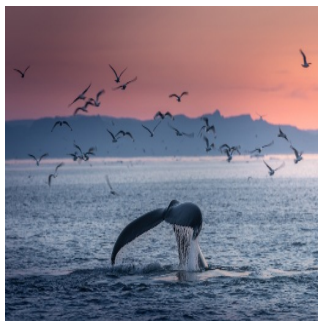
Greenland & Canadian Arctic



GREENLAND - EXPEDITION TO THE THULE REGION | LE BOREAL

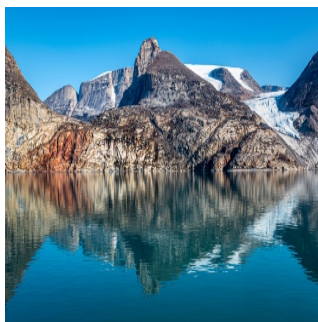
DAY 12: Icy Arm Fjord

The east coast of Baffin Island is a real lacework of fjords. Among them, in the north, is the spectacular Icy Arm fjord. As you sail these parts, you'll be dazzled by the immense cliffs that are sometimes over 1,000 metres high. This is a paradise for base jumping (parachute jumping from the top of the cliffs). During your stop here, you will have the opportunity to hike at the feet of these mountains and within the glacial valleys. Keep your eyes open when you get back on your boat: you'll probably get the chance to observe marine mammals, such as whales, orcas and even narwhals.



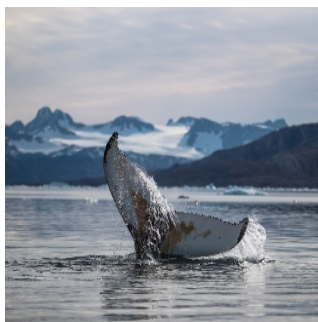
DAY 13: Sam Ford Fjord

All around you is a raw landscape of spectacular beauty. Nothing seems to want to disturb the silence. You are in the Sam Ford Fjord, on the east coast of Baffin Island. Located only a few kilometres away from the Inuit community of Clyde River, this fjord has the kind of world's end appearance that only the Arctic lands can offer. From your ship, allow yourself to be dazzled by the series of vertiginous cliffs plunging into the waters of the fjord. These impressively high walls of rock, known worldwide to climbing enthusiasts, are reflected in the waters of the fjord, as though to completely shift perspectives and blur the lines between land and sea.



DAY 14: Ninginganiq Wildlife Area, Isabella Bay

Welcome to the kingdom of the cetaceans! Here, those who love the giants of the Arctic won't know where to look. Isabella Bay is in fact part of the Ninginganiq National Wildlife Area, one of the finest places to observe bowhead whales. From your ship, watch the sumptuous ballet performed by these impressive mammals. With undersea faults over 300 metres deep, Isabella Bay, located on the north-east coast of Baffin Island, attracts cetaceans which come here to feed. In addition to the bowhead whales, the uncontested stars of these parts, the Ninginganiq Wildlife Area is also home to ringed seals, narwhals, polar bears, king eiders, little auks and northern fulmars.



TRIP CODE

ACPOTE

DEPARTURE

20/07/2024, 05/08/2024,
02/08/2025

DURATION

17 Days

LOCATIONS

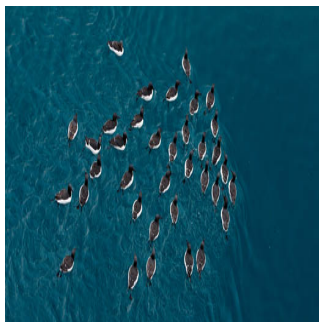
Greenland & Canadian Arctic



GREENLAND - EXPEDITION TO THE THULE REGION | LE BOREAL

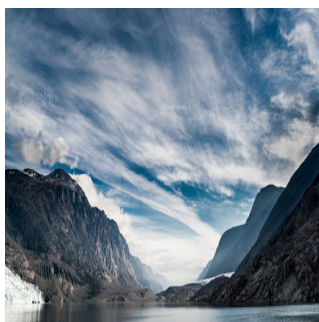
DAY 15: At Sea

During your day at sea, make the most of the many services and activities on board. Treat yourself to a moment of relaxation in the spa or stay in shape in the fitness centre. Depending on the season, let yourself be tempted by the swimming pool or a spot of sunbathing. This day without a port of call will also be an opportunity to enjoy the conferences or shows proposed on board, to do some shopping in the boutique or to meet the PONANT photographers in their dedicated space. As for lovers of the open sea, they will be able to visit the ship's upper deck to admire the spectacle of the waves and perhaps be lucky enough to observe marine species. A truly enchanted interlude, combining comfort, rest and entertainment.



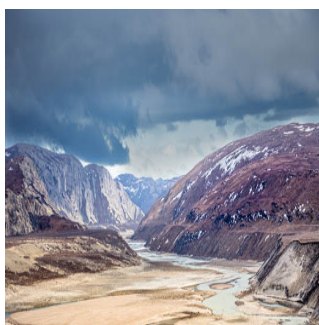
DAY 16: Evighedsfjorden

Your ship glides slowly along the water towards the west coast of Greenland, to enter Evighedsfjorden, just a few kilometres south of Kangerlussuaq. Evighedsfjorden means "the fjord of Eternity", and for good reason: just when you think you've reached the end of this stretch of sea measuring over 100 kilometres in length, it seems to go on forever, as though to bring even more pleasure to those sailing in it. The spectacular scenery ranges from glaciers to tundra with an abundant flora, and jagged cliffs where numerous bird species have taken up residence. Take the time to observe the white-tailed eagles and the colonies of seagulls and black-legged kittiwakes flying overhead in the area.



DAY 17: Kangerlussuaq to Paris

You will disembark your vessel in Kangerlussuaq in the early morning. Take this time to bid farewell to your fellow passengers and crew, reflecting on the incredible memories you have made together. Your cruise package includes a return charter flight to Paris. Please note the flight duration is approximately 5 hours. We highly recommend you spend the night in Paris after your flight.



TRIP CODE

ACPOTE

DEPARTURE

20/07/2024, 05/08/2024,
02/08/2025

DURATION

17 Days

LOCATIONS

Greenland & Canadian Arctic



GREENLAND - EXPEDITION TO THE THULE REGION | LE BOREAL

INCLUSIONS & DETAILS

Accommodation	Cabin on board ship
Inclusions	<p>INCLUSIONS</p> <p>Cabin accommodation on board ship</p> <p>All meals whilst on board</p> <p>Charter flight Paris/Kangerlussuaq on Embarkation Day</p> <p>Charter flight Kangerlussuaq/Paris on Disembarkation Day</p> <p>Transfers to/from airport to vessel</p> <p>Guiding and lectures by experienced expedition crew</p> <p>Unlimited Open bar & included Mini bar</p> <p>Free WiFi on board</p> <p>EXCLUSIONS</p> <p>International flights (excluding charter flights mentioned in package)</p> <p>Pre and post land arrangements and accommodation in Paris</p> <p>Any optional activities not mentioned in itinerary</p> <p>Visa and reciprocity fees (if applicable)</p> <p>Travel Insurance</p> <p>Any Personal Expenses</p>
Difficulty Rating	2 (light adventure)
Single Surcharge	Available on request. Please contact us for more information.
Notes	Please note this expedition may be subject to change depending on weather and ice conditions.
Price Dependent upon	Departure date, seasonality and availability

SUSTAINABILITY

Being environmentally accountable is a crucial part of our organisation. Chimu is currently striving towards using less paper, taking several initiatives to do so and tracking our progress along the way. Our goal: A paperless organisation. For this reason, all information given to you will be sent electronically. We encourage those who choose to travel with us to support our aspirations and actions and ask that you reconsider printing out documentation. To view these documents, you can download them to your iPad or portable computer before and during your trip.

Chimu is passionate and dedicated to sustainability measures and understands the crucial part sustainability plays within the tourism industry.

We use local guides and office staff to both maximise local employment opportunities and minimise carbon footprint. Local guides also ensure you benefit from the intimate knowledge, passion and culture of the country you're visiting. Our guides are all highly

TRIP CODE

ACPOTE

DEPARTURE

20/07/2024, 05/08/2024,
02/08/2025

DURATION

17 Days

LOCATIONS

Greenland & Canadian Arctic



GREENLAND - EXPEDITION TO THE THULE REGION | LE BOREAL

qualified (most with university degrees) or equip with many years of experience and are paid above the standard wage. Whether it be our knowledgeable local guides, locally produced meals or the transport on tour, we do not use imported goods when local products are available. We aim to minimise our impact on the environment and give as much back as possible to the communities we work in.

While visiting the many national parks, heritage sites, museums and landmarks our travellers are encouraged to explore whilst remaining culturally aware and sensitive. We further encourage you to buy appropriate souvenirs and discourage the buying of anything wrongfully made or taken from the environment i.e. shells and endangered species products. Information on how you can be environmentally conscious, and travel responsibly will be made available in our Travellers Guides and provided during your travels by guides and staff.

For more information on our sustainability policies, including how we are striving towards being a paperless organisation, click [HERE](#)

TRIP CODE

ACPOTE

DEPARTURE

20/07/2024, 05/08/2024,
02/08/2025

DURATION

17 Days

LOCATIONS

Greenland & Canadian Arctic

