

OCEAN ENDEAVOUR

ANTARCTICA



WHAT'S INSIDE

The Ocean Endeavour	4
Our expeditions	6
Why Choose the Ocean Endeavour	8
Deckplan	10
Ship Layout	12
Inside the Ocean Endeavour	14
Common Areas & Onboard Facilities	16
Cabin Information	18
Optional Activities	24
Kayaking, Photography Program	24
Camping, Snowshoeing, Day Paddle	25
Wellness Program	28
Citizen Science Program	30
Itineraries	34
Best of Antarctica	34
Best of Antarctica in Depth	36
Journey to the Antarctic Circle	38
Shackleton's Antarctica, South Georgia & Falklands	40
Ultimate Antarctica	42
Operating Sustainably in Antarctica	44
Expedition Essentials	46
Our provided expedition gear	48





THE OCEAN ENDEAVOUR

Comfort and Adventure

The Ocean Endeavour allows you to explore the remote coastline of Antarctica while enjoying the class and comfort of a four-star hotel. Featuring one expedition team member for every eight travellers, you can take full advantage of one of the best staff-passenger ratios in Antarctica (1:8), with a greater level of personal service and more time with our onboard experts. Complete with contemporary interiors, lounges for learning and reflection, Zodiacs for remote exploration, breathtaking 360° views from the Deck, an emphasis on sustainability and exciting activities, the Ocean Endeavour is ideally suited for polar expedition cruising in Antarctica.

Recommended for its sense of space, the ship has plenty of open and airy communal areas that allows you to bask in the unrivalled beauty of passing polar scenery.

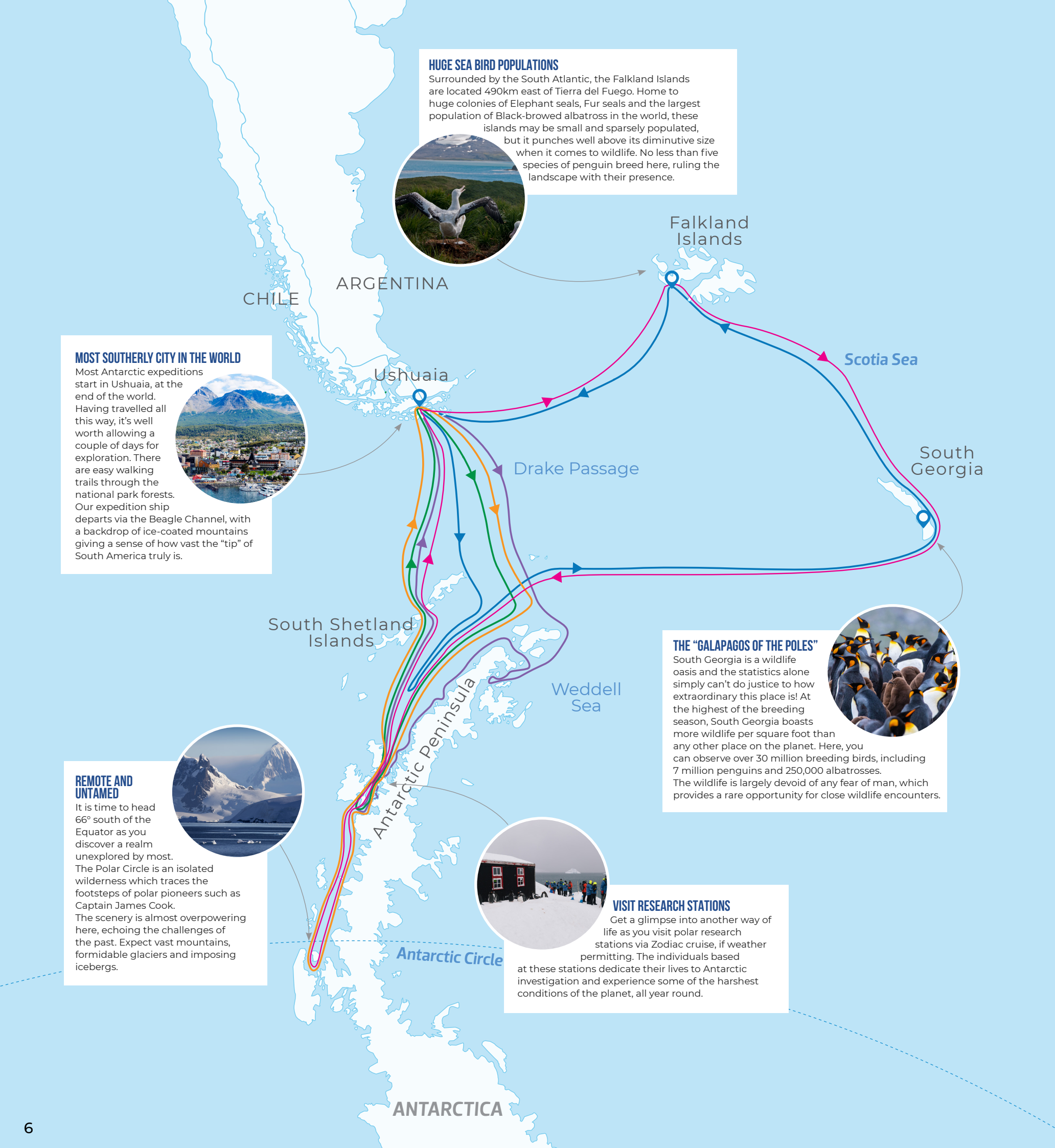
Housing ten different categories of cabins, the Ocean Endeavour appeals to clients of all ages and budgets. From single occupancy cabins to large double suites, there's plenty of choices.

TECHNICAL SPECIFICATIONS

Built: Poland 1982
Ice Class: 1B
Length: 137m (332ft)
Breadth: 21m (36ft)
Max Draft: 5.6m (18ft)
Cruising Speed: 15 knots
Propulsion: 4 Skoda Sulzer engines (4,355 horsepower per engine)
Electricity: 220 volts/60Hz
Passenger Capacity: 200 (maximum)
Crew: 124

SAFETY EQUIPMENT

Lifeboats: 6
Life rafts: 8



HUGE SEA BIRD POPULATIONS

Surrounded by the South Atlantic, the Falkland Islands are located 490km east of Tierra del Fuego. Home to huge colonies of Elephant seals, Fur seals and the largest population of Black-browed albatross in the world, these islands may be small and sparsely populated, but it punches well above its diminutive size when it comes to wildlife. No less than five species of penguin breed here, ruling the landscape with their presence.



Falkland Islands

MOST SOUTHERLY CITY IN THE WORLD

Most Antarctic expeditions start in Ushuaia, at the end of the world. Having travelled all this way, it's well worth allowing a couple of days for exploration. There are easy walking trails through the national park forests. Our expedition ship departs via the Beagle Channel, with a backdrop of ice-coated mountains giving a sense of how vast the "tip" of South America truly is.



Ushuaia

Drake Passage

Scotia Sea

South Georgia

South Shetland Islands

Weddell Sea

Antarctic Peninsula

Antarctic Circle

ANTARCTICA

THE "GALAPAGOS OF THE POLES"

South Georgia is a wildlife oasis and the statistics alone simply can't do justice to how extraordinary this place is! At the highest of the breeding season, South Georgia boasts more wildlife per square foot than any other place on the planet. Here, you can observe over 30 million breeding birds, including 7 million penguins and 250,000 albatrosses. The wildlife is largely devoid of any fear of man, which provides a rare opportunity for close wildlife encounters.



REMOTE AND UNTAMED

It is time to head 66° south of the Equator as you discover a realm unexplored by most. The Polar Circle is an isolated wilderness which traces the footsteps of polar pioneers such as Captain James Cook. The scenery is almost overpowering here, echoing the challenges of the past. Expect vast mountains, formidable glaciers and imposing icebergs.



VISIT RESEARCH STATIONS

Get a glimpse into another way of life as you visit polar research stations via Zodiac cruise, if weather permitting. The individuals based at these stations dedicate their lives to Antarctic investigation and experience some of the harshest conditions of the planet, all year round.



OUR EXPEDITIONS

BEST OF ANTARCTICA

11 days

This itinerary is perfect for all travellers who want to set foot on mainland Antarctica, feel the fresh cold on your cheeks while sailing through narrow channels and explore some of Antarctica's most beautiful spots. The Antarctic Peninsula is home to the greatest collection of Antarctic wildlife and a veritable menagerie of penguins, seals and whales will welcome you to the White Continent

JOURNEY TO THE ANTARCTIC CIRCLE

14 days

For the ultimate adventure and bragging rights, join this expedition crossing the Antarctic Circle at 66 degrees south while visiting some of the most beautiful landmarks, both north and south of the Antarctic Circle. We leave Ushuaia and civilisation behind and head towards the hauntingly beautiful icy wilderness of Antarctica. The scenery is nothing but dramatic as we sail amongst immense ice carvings, majestic mountains shrouded in snow, calving glaciers and through ice-choked waterways.

ANTARCTICA, FALKLANDS & SOUTH GEORGIA

21 days

This epic adventure takes you across the depths of the Drake Passage to the awe-inspiring Antarctic Peninsula, South Georgia and the Falkland Islands. Retrace the path forged by Ernest Shackleton and explore areas known for their plentiful wildlife with an expert expedition team. Visit penguin rookeries, spot seals along the coast and head out on a zodiac in search of minke whales, orcas and more.

BEST OF ANTARCTICA IN DEPTH

14 days

For travellers wanting to discover what it means to be a true Antarctic explorer is this expedition to the rugged and remote western side of the Antarctic Peninsula. This voyage gives you the best of both worlds; the explorer-history and vast wilderness of the east, and the popular sights of the west. After visiting the Weddell Sea, we sail through the Antarctic Sound - possible to navigate only a few times a year - and witness large tabular icebergs and striking scenery.

ULTIMATE ANTARCTICA: FALKLANDS, SOUTH GEORGIA & ANTARCTIC CIRCLE

23 days

Sail on one of the longest Antarctica trips available, that really allows you to see absolutely everything that the White Continent has to offer. Explore 'The End of the World', marveling at ice floes and glaciers. Visit the Falkland Islands and the wildlife mecca that is South Georgia to see colonies of thousands of king penguins. The ultimate achievement of this expedition will be reaching latitude 66°33'S, crossing the legendary Antarctic Circle, an experience very few adventurers have been lucky enough to partake in.



WHY CHOOSE THE OCEAN ENDEAVOUR?



Its a REAL Antarctic Expedition!

Immerse yourself in Antarctica with our ice-strengthened expedition vessel – equipped with a large fleet of 22 Zodiacs for small group off-ship exploration, and a full sized expedition mudroom for guests comfort and convenience.

Our industry-leading guide to guest ratio of handpicked Expedition Guides means more interaction with our expert team throughout your voyage, enriching your Antarctic experience.



The best range of cabins to suit all travellers

With over 10 different choices of comfortable cabin styles, including plenty of options for solo travellers, our spacious range of cabins offers something to suit all guests and budgets.



Unrivalled commitment to science and sustainability

Our Citizen Science Program is ingrained into all aspects of our expedition, ensuring you will leave Antarctica with a deep sense of understanding and appreciation of this polar wilderness.

Sustainability is at the heart of our operation – we carbon offset every expedition and go the extra mile to ensure we reduce our net emissions while operating a safe and environmentally responsible voyage.



Wide choice of adventure activities

Enhance your own Antarctic experience and choose from our wide range of standalone adventure activities like Camping, Kayaking, Snowshoeing, Day Paddle and our industry-leading dedicated Photography Program!



Wellness, at the edge of the Earth

Rejuvenate your mind and body with an array of wellness facilities while onboard the Ocean Endeavour. Indulge yourself in his or her saunas, jacuzzi, saltwater pool and gym, join 'Floë' our onboard yoga and meditation classes or perhaps indulge in a massage or facial in the Australis spa.

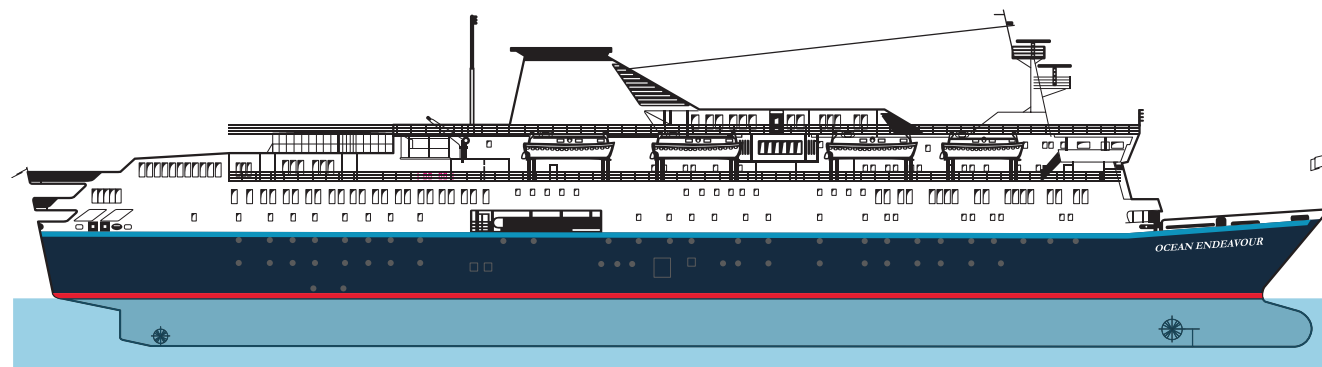
Enjoy an unmatched sense of space

Whether you're looking for a quiet corner to reflect, or a social space to mingle with your fellow like-minded travellers, the Ocean Endeavour offers a plethora of common areas and wide outer decks that smaller ships simply don't have space for!

We hope that you will join us on the trip of a life time aboard the Ocean Endeavour. Our Team can't wait to share our passion for this incredible place with you.

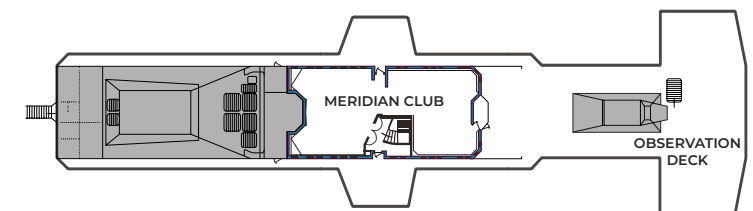


DECK PLAN

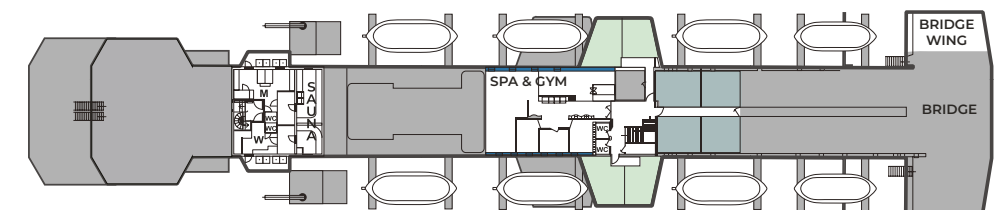


- CATEGORY 1 | Single Interior
- CATEGORY 2 | Triple Interior
- CATEGORY 3 | Twin Interior
- CATEGORY 4 | Twin Interior
- CATEGORY 4A | Single Porthole
- CATEGORY 5 | Twin & Double Window
- CATEGORY 5A | Single Window
- CATEGORY 6 | Comfort Twin
- CATEGORY 7 | Select Twin
- CATEGORY 8 | Superior Twin & Double
- CATEGORY 9 | Junior Suite Double
- CATEGORY 10 | Owner's Suite

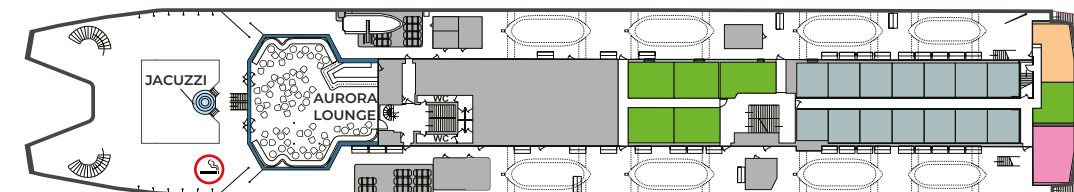
DECK 9



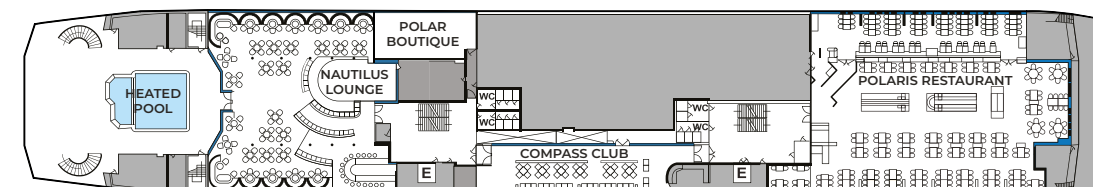
DECK 8



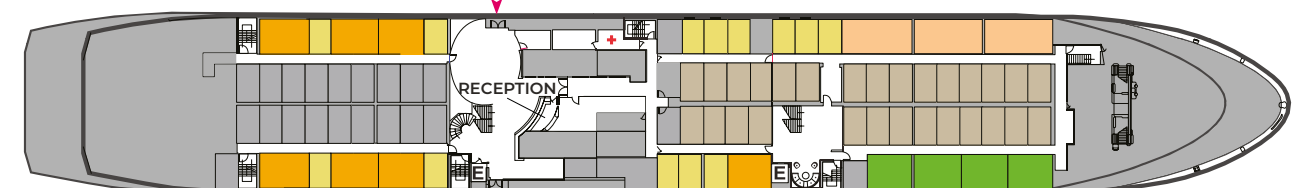
DECK 7



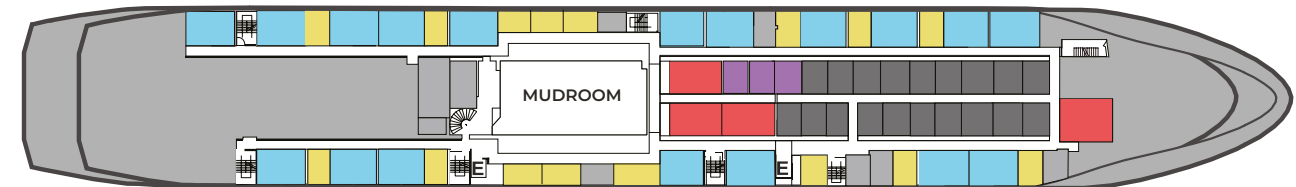
DECK 6



DECK 5



DECK 4



SHIP LAYOUT



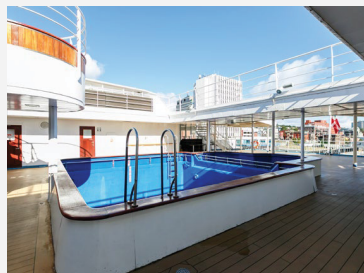
AURORA LOUNGE

Located on Deck 7, this is an intimate space for film screenings, lectures and travel talks. Enjoy panoramic views from the large windows.



POLAR BOUTIQUE

If you forgot any essentials or need a little souvenir from your voyage, the Polar Boutique on Deck 6 in the Nautilus Lounge is our onboard gift shop.



POOL & JACUZZI

Located on Deck 6, 7 & 8, the back or aft Deck is where you can enjoy a Polar BBQ lunch, take a swim in the pool or relax in the jacuzzi (available subject to sea conditions).



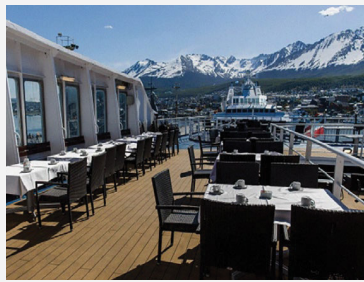
COMPASS CLUB

Located on Deck 6 the Compass Club is home to our Polar library. A quiet space to relax, with 24-hour coffee/tea station and comfortable seating.



MERIDIAN CLUB

Located on Deck 9, this top deck lounge offers panoramic windows and an easy access to the outdoor observation platform. It is often used for yoga and stretching classes, tabletop games, and small group workshops.



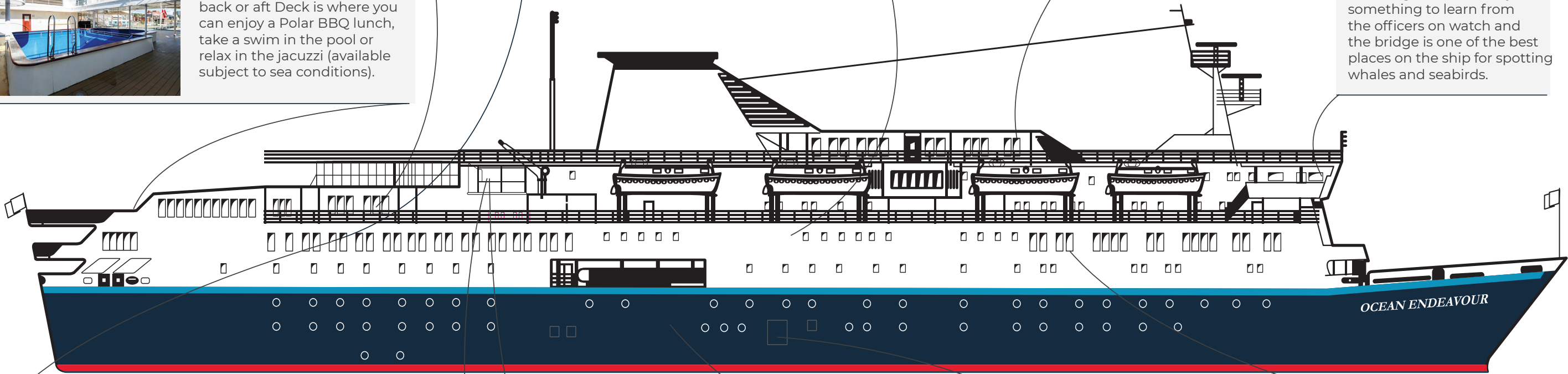
OUTER DECKS

Located in various spots all around the ship, with full circumference access on Decks 7 and 8.



OPEN BRIDGE POLICY

Guests are welcome to meet the navigating crew on the bridge; there's always something to learn from the officers on watch and the bridge is one of the best places on the ship for spotting whales and seabirds.



NAUTILUS LOUNGE

Located on Deck 6, the Nautilus Lounge hosts lectures and travel talks with enough seating for all guests. It is also home to the bar, with access to the Polar Boutique and outer Decks.



SAUNA

Located on Deck 8, the men's and women's saunas provide ample space to warm up with views to the icy waters of the Polar Regions.

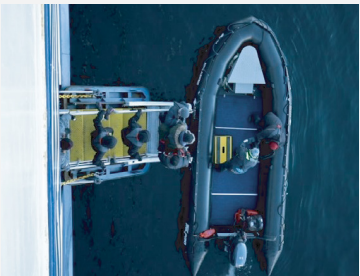


MUDROOM

Located on Deck 4, our heated expedition preparation room has personal storage for all guests. Rubber boots and life jackets are available here and wet gear may be stored as needed.

ZODIAC LANDING AREAS

Featuring 4 loading areas (2 on each side), this allows for quick embarkation. A large fleet of 20 Zodiacs enables all guests to be off the ship at one time.



POLARIS RESTAURANT

Located on Deck 6, the Polaris Restaurant is an open-seating dining room featuring large windows for you to enjoy the passing wildlife while you can indulge in our Chef-prepared meals.

GYM

Located on Deck 8, guests can enjoy a variety of health and wellness amenities such as gym and spa.



COMMON AREAS & ONBOARD FACILITIES

COMPASS CLUB

Home to our Polar Library, a quiet space to relax, with a 24-hour coffe/tea station and comfortable seating.

AURORA LOUNGE

An intimate space for film screenings, lectures, travel talks and also home to our polar boutique.

MERIDIAN CLUB

Our top deck lounge offers panoramic windows and easy access to the outdoor observation platform.

NAUTILUS EXPEDITION LOUNGE

The Nautilus Expedition Lounge hosts lectures and travel talks with enough seating for all guests.

POLARIS RESTAURANT

Our Polaris restaurant featuring large windows to enjoy the passing landscapes, is an open-seating



POLARIS RESTAURANT



COMPASS CLUB



MERIDIAN LOUNGE



NAUTILUS LOUNGE

COMMON AREAS & ONBOARD FACILITIES

OUTER DECKS

Located in various spots all around the ship, our outer decks are where you will enjoy the Polar BBQ. Relax in our large heated, outdoor saltwater pool surrounded by deck spaces or in our freshwater jacuzzi with panoramic views (available based on sea conditions)

360° FLYDECKS

Located above the bridge, our flydecks offer unparalleled views, perfect for wildlife spotting!

GYM

Located on Deck 8, our gym offers stationary bikes, a rowing machine and hydraulic resistance machines.

MUDROOM

Our heated mudroom has personal storage for all guests. Rubber boots and life jackets are available here and wet gear may be stored as needed.



CABIN INFORMATION

Cabins and suites have the essential amenities you'll need to feel comfortable throughout your voyage. Our friendly staff at reception or your cabin attendant will be happy to help with any additional bedding you need for your cabin.



Willing to share (same gender) at no extra charge.



Solo use at no extra charge

All cabins include the following amenities:



PRIVATE BATHROOM

All cabins have a private bathroom with a shower, toilet and washbasin. A hairdryer is available in each cabin. Bathrobes and towels are on loan for you to enjoy for the duration of your expedition.



BODY WASH & HAIR CARE PRODUCTS

We encourage you to use our eco-friendly shampoo, conditioner and shower gel provided in each bathroom.



FLATSCREEN TV

Every cabin features a flatscreen TV which presents the daily program and movies/documentaries during sea days. Lectures and presentations may be broadcasted in addition to featuring in the lecture room by our Expedition Team.



TELEPHONE & INTERCOM

Our Expedition Leader will announce exciting wildlife sightings, lectures and other ship activities through the intercom.



CABIN SAFE

Feel free to store your valuables in the cabin safe provided or with our staff at reception.



Solo use



● CATEGORY 1: SINGLE INTERIOR

Approximately 122 ft² / 11 m², a Single Interior on Deck 5 is an interior cabin with two lower berths and a private bathroom.



Willing to share



● CATEGORY 2: TRIPLE INTERIOR

Approximately 220 to 230 ft² / 20 to 21.5 m², our Triple Interior on Deck 4 is an interior cabin with three lower berths and one or two private bathrooms.



● CATEGORY 3: TWIN INTERIOR

Approximately 120 ft² / 11 m², a Twin Interior on Deck 4 is an interior cabin with two lower berths and a private bathroom.



● CATEGORY 5: TWIN/DOUBLE WINDOW

Approximately 141 ft² / 13 m², our Twins & Doubles on Deck 7 & 8 feature one or two windows, two lower berths and a private bathroom.

● CATEGORY 5A: SINGLE WINDOW

Approximately 155 to 174 ft² / 14 to 16 m², our Singles on Deck 8 feature two windows, a double bed and a private bathroom.



● CATEGORY 4: TWIN PORTHOLE

Approximately 76 to 110 ft² / 7 to 10m² on Deck 4 feature a porthole, two lower berths and a private bathroom.

● CATEGORY 4A: SINGLE PORTHOLE

Approximately 110 ft² / 10m² on Decks 4 & 5 feature a porthole or window, two lower berths and a private bathroom.



● CATEGORY 6: COMFORT TWIN

Approximately 228 ft² / 21 m², a Comfort Twin on Deck 4 features two portholes, two single berths, a separate sitting area with a pull out sofa bed and one or two private bathrooms.





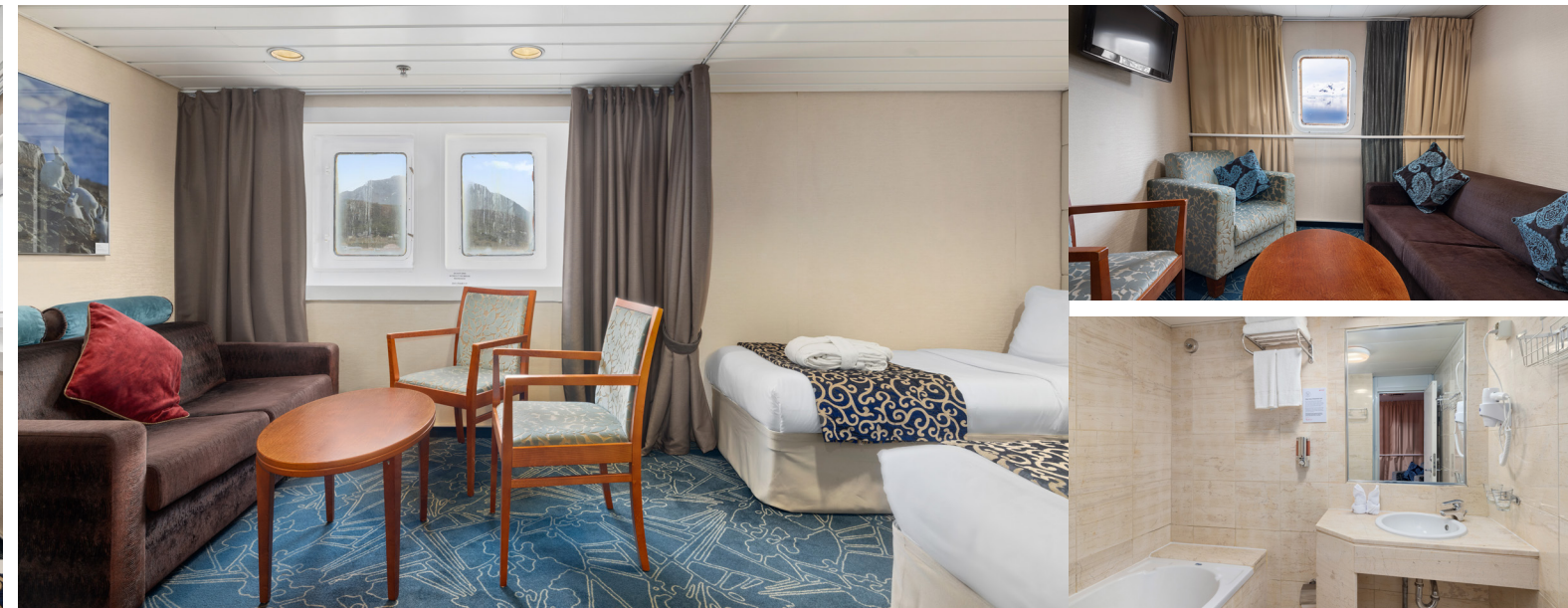
Willing to share

● CATEGORY 7: SELECT TWIN

Approximately 214 ft² / 20 m², a Select Twin on Deck 5 features two single berths, a separate sitting area with a pull out sofa bed, two windows and one or two private bathrooms.

● CATEGORY 9: JUNIOR SUITE DOUBLE

Approximately 325 ft² / 130 m² on Deck 5 and 243 ft² / 22.5 m² on Deck 7, the Junior Suites feature large windows, one double bed, a separate sitting area and a private bathroom.



Willing to share

● CATEGORY 8: SUPERIOR TWIN

Approximately 225 ft² / 21m² on Deck 5 features two lower berths, a separate sitting area with a pull out sofa bed, a large window and a private bathroom.

● CATEGORY 8: SUPERIOR DOUBLE

Approximately 165 to 200 ft² / 15 to 19m² on Deck 7 and features one double bed, a sofa, a large window and a private bathroom.

● CATEGORY 10: OWNERS SUITE

Approximately 305 ft² / 28 m², the Owner's Suite on Deck 7 features two large bow-facing windows, one double bed, a separate sitting room and a private bathroom with a bath tub.



PERSONALISE YOUR ADVENTURE

Optional Activities

Approach a looming glacier in a sea kayak, strap on snowshoes to reach the best icy viewpoints, capture the perfect penguin shot under the guidance of expert photography guides or camp under an Antarctic night sky – these are just some of the ways you can enrich your exploration of the great White Continent with our additional activities.

Our additional paid adventure options are subject to availability, weather and sea conditions, itinerary and departure date, so please contact your booking agent for more detailed information. Spaces on all paid adventure options are limited. For pre-booked activities, we recommend booking via your booking agent early to avoid disappointment.

OPTIONAL ACTIVITIES



KAYAKING

In small groups of 16 kayakers, under full instruction from our Expedition Kayak Guides, experience true tranquility as you paddle through clinking ice floes in awe of the enormity of the surrounding scenery. Previous kayaking experience and a good level of fitness required. Single and double sea kayaks are available.

Pre-book via your booking agent.

Voyage duration program:

We will aim to have you kayak as often as possible throughout the voyage, but the number of excursions will depend on weather conditions.



PHOTOGRAPHY PROGRAM

Capture incredible wildlife and landscape shots under the guidance of our world-class photographers whilst utilising the latest photography gear available on loan throughout your voyage. Our small group dedicated Photography Program offers photography enthusiasts of any skill level the opportunity to make photography a focus of their expedition.

Pre-book via your booking agent.

This program includes briefing & skill sessions, dedicated zodiac rides and post-editing lessons.

Voyage duration program:

The Photography Program will run simultaneously along with our expedition program.



DAY PADDLE

Enjoy an unforgettable experience on the water, taking in the breathtaking surroundings of Antarctica whilst accompanied by Expedition Day Paddle Guides.

Our expertly guided, one-off day paddle excursions in our stable, sit-on-top inflatable kayaks give you the rare chance to see Antarctica from the same perspective as most of the wildlife – at the surface of the sea. No previous kayaking experience is required

Book on board via the Expedition Team.

One-off excursion.



CAMPING

Camp out on the ice and experience the silence that blankets the continent by night.

This is your chance to completely connect with this ethereal ice world - wrap up warm and embrace the Antarctic elements.

Pre-book via your booking agent.

One-off excursion.



SNOWSHOEING

Get a spring in your step when you clip on a pair of snowshoes in Antarctica. Enabling you to easily scale gentle slopes, this unique activity allows you to access hard to reach places and seek out the most impressive views.

Book on board via the Expedition Team.

One-off excursion.

OUR WELLNESS PROGRAM & FACILITIES

'FLOE' YOGA & MEDITATION CLASSES

It doesn't get more serene than a yoga class to the tune of glacial scenery. Join the most unique exercise setting in the world after a day of exploration. Classes are complimentary and regular but are dependent on weather conditions and swell.

SPA TREATMENTS

Relax and rejuvenate in our bright, spacious Australis Spa. Choose from a variety of massage therapy sessions and spa treatments to detox your body while relaxing your mind. Costs vary, see spa treatment menu on board.

WELLNESS FACILITIES

Enjoy his and hers saunas with large windows, so you won't miss a thing. Other facilities include a heated salt water pool, freshwater jacuzzi and a well-equipped gym with ellipticals, exercise bike and other gym equipment.

POLAR LIBRARY

Our Polar Library, located in the Compass Club is the perfect quiet space for all early risers. Close to the tea and coffee station, we invite you to enjoy the Antarctic landscapes while browsing our extensive collection of polar books, covering subjects like wildlife, history, marine biology, ecology and geology in multiple languages.





CITIZEN SCIENCE

Take part in scientific research.

Citizen science is a way to harness the power of thousands of travellers around the world to observe, record and report on natural phenomena. This is particularly useful in remote and isolated destinations like Antarctica, where it is challenging to support long-term academic observation teams.

Scientific research in the antarctic is often a costly, time-consuming and difficult task. Citizen Science programs like ours aboard the Ocean Endeavour can help in the collection of invaluable data that can help us to better understand Antarctica and the issues it faces.

During every Antarctic voyage, you have the chance to observe, record and report on natural phenomena as part of a collaboration project with Antarctic scientists.

Our dedicated Citizen Science Coordinator will lead guest-focussed initiatives to maximise our contribution to scientific research. The data collected will directly contribute to a better understanding of climate change and how it is affecting the polar regions.

CITIZEN SCIENCE PROJECTS

Antarctica and the Southern Ocean play critical roles in the regulation of the Earth's climate system and in many ways are the 'canary in the coal mine' of climate change.

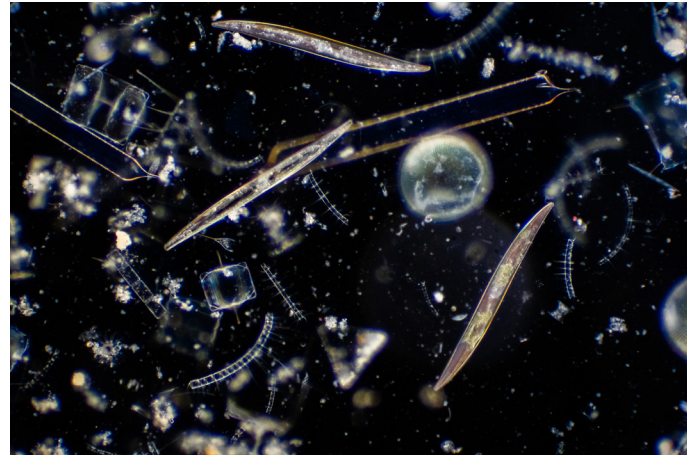
Our onboard Citizen Science program allows you to contribute to the future of Antarctica, to collect data that can contribute to real scientific studies of the frozen continent and its inhabitants.



SEABIRD SURVEY

By conducting bird surveys while at sea or on shore, we can help scientists begin to understand mesoscale seabird distribution patterns and habitat in the Southern Ocean.

You will be working in small groups with an Ornithologist out on the decks identifying various sea birds.



FJORDPHYTO

Phytoplankton are the sea's most important inhabitants which underpin the entire marine food chain and account for 50% of all the photosynthesis on earth. During your voyage, you will collect phytoplankton samples, which will help researchers to obtain a seasonal picture of phytoplankton abundance and distribution throughout their growing season.



HAPPY WHALE

During your voyage, we encourage you to take photos of whale's flukes, including any identifiable marks and to upload them online. Happy Whale then uses AI (artificial intelligence) and machine learning to analyse and identify the individual whale and then tracks their movement across the oceans.



SECCHI DISK

This project supports the Secchi Disk Foundation and is named after the white disk that measures the clarity of seawater. A Secchi Disk will be used to record the Secchi Depth and will be lowered vertically into the seawater from the Zodiac.

This study offers you a unique insight into the marine food chain.



CLOUD FORMATIONS

Clouds affect how much sunlight the earth absorbs and how much heat escapes back into space.

By observing and recording cloud cover timed to NASA satellite flyovers, we can help to understand how surface and air temperature are affected by cloud covers.



BEST OF ANTARCTICA

Day 1: Arrival in Ushuaia, Argentina

The day is at leisure and you are free to explore.

Day 2: Embarkation in Ushuaia, Argentina

Embarkation in the late afternoon.

This evening we set sail through the Beagle Channel.

Day 3-4: At sea, Drake Passage

The infamous Drake Passage, named after the famous English explorer, Sir Francis Drake, separates the tip of the Antarctic Peninsula from the southernmost tip of South America. Often rough and turbulent, but sometimes calm, be prepared for the unpredictable.

Day 5-9: South Shetland Islands & West Antarctic Peninsula

The next four days will be spent exploring the South Shetland Islands and Antarctic Peninsula – a region that has captivated explorers for centuries and now enthralls travellers.

Explore by Zodiac boats, cruising amongst the magnificently sculpted icebergs and making shore landings where you mingle with penguins, climb to vantage points to absorb the spectacular panoramic views and perhaps visit a scientific or historic base.

Optional activities such as kayaking or snowshoeing allow you to explore further afield and have a more intimate experience.

If you're feeling brave, take a polar plunge into the icy Antarctic waters while our talented Expedition Photographer captures the moments as they unfold.

Witness extensive colonies of penguins, Crabeater, Weddell, Fur and Elephant seals and a plethora of fascinating birds.

Keep your eyes and ears peeled for the mighty crack of a glacier calving. Each day brings a new experience and new landing sites to explore.

Day 9-10: At sea, Drake Passage

Leave the Antarctic Peninsula behind as you set sail across the Drake Passage.

Day 11: Disembarkation in Ushuaia, Argentina

Your Antarctic adventure draws to a close as you disembark the Ocean Endeavour following breakfast.

Farewell, your fellow guests and your Expedition Team and join a transfer to Ushuaia airport for your onward journey today. Or perhaps extend your stay to spend some more time exploring this incredible part of the world.

11 DAYS/10 NIGHTS

DEPARTURE DATES

2023/24 Season

02 November 2023
11 November 2023
09 December 2023
18 December 2023
27 January 2024
17 February 2024
09 March 2024

2024/25 Season

18 November 2024
27 November 2024
18 December 2024
27 December 2024
26 January 2025
16 February 2025
09 March 2025 (12 days)



BEST OF ANTARCTICA IN DEPTH

Day 1: Arrival in Ushuaia, Argentina

Your adventure begins in Ushuaia, Argentina.

Nestled within the Tierra del Fuego archipelago, Ushuaia is the gateway to exploring the southern extent of Patagonia while preparing for your Antarctic voyage.

The day is at leisure and you are free to explore.

Day 2: Embarkation in Ushuaia, Argentina

Following your embarkation onto the Ocean Endeavour in the late afternoon, you begin your Antarctic journey south, passing through the infamous Beagle Channel.

Day 3-4: At sea, Drake Passage

Wake to the sights and sounds of the famous Drake Passage. Your on-board experts in biology, oceanography, history and photography will begin their presentations in the Nautilus Lounge. Keep your eyes peeled for the first

sighting of an iceberg as the continent of Antarctica appears on our horizon.

Day 5-9: South Shetland Islands & West Antarctic Peninsula

The next four days, you will be greeted by the sights and sounds of gentoo penguin colonies, a collection of bases observable on craggy points and we lower the zodiacs to explore famous sites like Orne Harbour, Paradise Bay or Port Lockroy.

Day 10-11: East Antarctic Peninsula & Weddell Sea

The vast Weddell Sea is edged by a seemingly endless coastline of basaltic beaches, islands that tower from the sea, and collections of islands that few humans have laid eyes on.

This is where British explorer Sir Ernest Shackleton and his crew began their legendary journey north after their ship, 'Endurance' was crushed by sea ice and sank.

There are so many potential landing sites from this location, like Paulet Island with

its large Adelie penguin rookery and Swedish Antarctic Expedition history; the sweeping Prince Gustav Channel to the south; and the protected and glacier-lined coves of Duse Bay.

No two days of any expedition are the same, and landing sites are subject to change depending on the elements and potential wildlife spotting opportunities, but our expert team of Expedition Guides will ensure that each day is memorable.

Day 12-13: At sea, Drake Passage

Watch as the outline of the Antarctic continent disappears over the horizon and again the albatross and seabirds of the open ocean join us for the voyage north.

This is a great time to reflect on the journey behind us and all that we discovered on the Antarctic Peninsula over the previous days.

14 DAYS/13 NIGHTS

DEPARTURE DATES

2023/24 Season
27 December 2023

2024/25 Season
06 December 2024

Day 14: Disembarkation in Ushuaia, Argentina

Following a steady night in the protection of the Beagle Channel, the early morning of our 14th day will see the Ocean Endeavour come alongside Ushuaia's pier.



JOURNEY TO THE ANTARCTIC CIRCLE

Day 1: Arrival in Ushuaia, Argentina

Ushuaia is the most southerly city in the world and the capital of Tierra del Fuego. It has a dramatic setting, surrounded by mountains to the north and the Beagle Channel to the south, making it a spectacular departure point for your Antarctic adventure.

Day 2: Embarkation in Ushuaia, Argentina

This morning is free for you to explore Ushuaia and in the afternoon, you will be transferred to the port to embark on the Ocean Endeavour.

Day 3-4: At sea

Prepare yourself for potentially rough seas as we enter the legendary Drake Passage.

As we head southwards, there is time to get to know your shipmates and get an insight into the excitement ahead with

presentations from the Expedition Team on everything Antarctic.

Day 5-8: South Shetland Islands & Antarctic Peninsula

For the next four days we explore the South Shetland Islands and Antarctic Peninsula that is famed for its majestic mountains, glaciers, imposing icebergs, icestrewn waters and abundance of wildlife. The scenery, wildlife and serene silence of Antarctica will enchant and enthrall and you will soon realise why this region has captivated the attention of explorers and travellers for centuries.

Your days on the Antarctic Peninsula will form the core of your adventure. Every day will be different as we cruise by Zodiac amongst the beautifully sculpted icebergs and take Zodiac excursions from the ship to explore local bays, channels and landing sites.

Day 9-10: At sea

If weather conditions are favourable, we will continue to push south, past vast icebergs, in the hope of reaching latitude 66°33' S to cross the fabled

Antarctic Circle. This is a point that only a few intrepid travellers have reached, an impressive achievement and one worthy of a celebration!

Day 11: South Shetland Islands & Antarctic Peninsula

Heading north once more, we will continue to explore the Antarctic Peninsula and South Shetland Islands, keeping a close watch for wildlife and scanning the waters for whale activity.

Enjoy your final Zodiac excursions and shore landings.

Day 12-13: At sea, Drake Passage

Leaving the Antarctic Peninsula behind, we head back across the Drake Passage. This is another great opportunity to look out for wildlife from the deck of the ship, as you identify seabirds and maybe whales with the Expedition Team.

Gain more insight into the region by attending final lectures and presentations by the polar experts and take time to relax and reminisce about your Antarctic experiences.

14 DAYS/13 NIGHTS

DEPARTURE DATES

2023/24 Season

05 February 2024

26 February 2024

2024/25 Season

04 February 2025

25 February 2025

Day 14: Disembarkation in Ushuaia, Argentina

We are scheduled to arrive into Ushuaia early this morning, disembarking after a final breakfast aboard the Ocean Endeavour.



SHACKLETON'S ANTARCTICA, SOUTH GEORGIA & FALKLANDS EXPLORER

Day 1: Arrival in Ushuaia, Argentina

The day is at leisure and you are free to explore.

Day 2: Embarkation in Ushuaia, Argentina

This afternoon, you will be transferred to the port to embark on your home for the next few weeks, the Ocean Endeavour.

In the evening, cast off and begin your journey south through the Beagle Channel and towards the Drake Passage.

Day 3-4: At sea, Drake Passage

Sailing south, your time at sea can be spent learning from your onboard expedition team of experts and guides through a series of talks, workshops, or casual conversation.

Day 5-7: South Shetland Islands & West Antarctic Peninsula

Get ready for onshore exploration over the next four days, stepping into a Zodiac and taking your first steps on the Peninsula.

Across the following days, you will venture even further south, aiming to access such famous sites as Neko Harbour, Port Lockroy and the Lemaire Channel.

Wildlife encounters on the Antarctic Peninsula are likely to include Weddell, crabeater and Leopard seals, Gentoo, Adelie and Chinstrap penguins, and Elephant seals.

Day 8: Elephant Island

Retrace explorer Ernest Shackleton's path to South Georgia and look out for seabirds, whales and other wildlife. You'll head towards Elephant Island, where sea and weather conditions permitting, we may be able to offer a Zodiac cruise at Point Wild.

Day 9-10: At sea

Attend lectures and presentations by the expedition team as they prepare you for what lies ahead in South Georgia.

Day 11-14: South Georgia

Over the next few days, explore the island

of South Georgia, once the homestead of whalers and isolated explorers but now a protected area with dedicated Antarctic research teams.

Explore a variety of landing sites and areas and learn about the history of Sir Ernest Shackleton, who led the British Imperial Trans-Antarctic Expedition between 1914 and 1916.

You will spend several days retracing some of Shackleton's steps, visiting his grave at the ex-whaling station of Grytviken located on the east side of the Island, where you will wander among hundreds of thousands of king penguins.

Day 15-16: At sea

Say goodbye to the wildlife of South Georgia and head west towards the isolated and sparsely populated Falklands archipelago, where the silence is broken only by the call of birds.

Day 17-18: Falkland Islands

The two main islands provide a rare opportunity to witness the biological diversity, extraordinary scenery and history of the islands.

21 DAYS/20 NIGHTS

DEPARTURE DATES

2023/24 Season

20 November 2023

08 January 2024

2024/25 Season (runs in reverse)

30 October 2023*

**Puerto Madryn, Falklands, South Georgia, Antarctica, Ushuaia*

The Falklands are a wildlife photographer's dream and have the largest black-browed albatross colony in the world, as well as five species of penguins who breed on the islands.

Day 19-20: At sea

Reflect on the spectacular scenery and wildlife you've encountered during the last three weeks.

Day 21: Disembarkation in Ushuaia, Argentina

Disembark after breakfast after bidding farewell to your fellow travellers and Expedition Team.



New itinerary!

ULTIMATE ANTARCTICA

Day 1: Arrival in Ushuaia, Argentina

Welcome to Ushuaia, Argentina – the gateway to the Great White Continent and the world’s southernmost city.

The day is at leisure and you are free to explore.

Day 2: Embarkation in Ushuaia, Argentina

Embarkation in the late afternoon.

This evening we set sail through the Beagle Channel.

Day 3-4: At sea, Drake Passage

With nothing but you and the blue horizon for the next couple of days, your time at sea is the perfect chance to take advantage of all the amenities and activities on board, spot sea birds from the deck and enjoy lectures from expedition team to learn about the journey ahead.

Day 4-5: Falkland Islands

This morning, you’ll approach The Falklands – a wildlife photographer’s dream. Here, you can find the largest

black-browed albatross colony in the world, as well as five species of penguins who breed on the islands. Witness an ever-changing horizon, with wetlands, lakes and rolling peaks waiting to be trekked.

Day 6-7: At sea

Farewell the Falkland Islands and sail towards South Georgia.

Day 8-7: South Georgia

Over the next few days, you’ll explore the island of South Georgia, once the homestead of whalers and isolated explorers – now, a protected site with dedicated Antarctic research teams. You’ll explore a variety of different landing sites and learn about the history of Sir Ernest Shackleton, known for his incredible survival during a failed expedition south.

Wander among hundreds of thousands of king penguins in the dramatic South Georgian light, visit old whaling stations and enjoy educational presentations on the then and now of the area.

Day 12-13: at sea

During your next couple of days at sea, take in the stunning panoramic views from the observation lounge or treat yourself to a massage in our day spa.

Day 14-18: South Shetland Islands & Antarctic Peninsula

For the next five days, you’ll dedicate your time to searching for wildlife, both from land and from Zodiacs for smaller-group sails. Soak up the unforgettable vistas at every turn and take every opportunity that awaits you. With multiple landing sites available, your Expedition Team will work out the best places to stop, taking into account the wild-and-woolly elements, accessibility options and any wildlife sighting possibilities.

Day 19-20: Antarctic Circle

Venturing to the ends of the earth is a moment to revel in, as not all expeditions venture this far south. If weather conditions permit, a celebration will be in order after reaching latitude 66°33’S and crossing the fabled Antarctic Circle.

23 DAYS/22 NIGHTS

DEPARTURE DATES

2024/25 Season
05 January 2025

Day 21-22: at sea

Settle back into your comfortable surroundings aboard for the return journey across the Drake Passage.

Day 21: Disembarkation in Ushuaia, Argentina

This morning, you’ll say goodbye to the Ocean Endeavour and disembark in Ushuaia. A transfer to Ushuaia airport or downtown is included if you are departing today.



OPERATING SUSTAINABLY IN ANTARCTICA

A Science Based Approach

We believe that with great travel comes great responsibility. As a travel company we know it is our duty to sustain and protect the environment we explore and love. We have, therefore, taken a range of sustainability measures to ensure our expeditions have as little impact as possible while providing you with unique and authentic experiences.

‘Sustainable cruising’ might seem like a contradiction in terms, given the history of the big mega liners. But it’s a side of the industry we want to change and why we are advocates of small ship cruising.

LIMITING THE IMPACT

We fully operate under and comply with the IAATO (International Association of Antarctic Tour Operators) guidelines in promoting and practising safe and environmentally responsible travel to the Antarctic. IAATO, in cooperation with other Antarctic ship operators have, and continue to, establish extensive procedures and guidelines that ensure appropriate, safe and environmentally sound travel to the Antarctic.

SUSTAINABILITY INITIATIVES

In addition to reducing carbon levels in the atmosphere and reversing some effects of climate change by carbon offsetting all our trips, we also strive to reduce our footprint by implementing the following:

- No plastic straws onboard and working towards eliminating all single use plastics throughout our entire operation.
- Only use sustainably sourced seafood.
- Eco-friendly shampoo, conditioner and shower gel are available in all cabin bathrooms.
- Eco-friendly cleaning products are used.
- All waste is carried with us out of Antarctica.
- Sustainable suppliers are used wherever possible in our supply chain.
- We are a founding sponsor of the Antarctic Science Foundation which directly supports Australian science programs throughout Antarctica.

OUR TRIPS ARE



Carbon offsets are a way for individuals and businesses to balance out their greenhouse gas emissions by allocating funds to emission reduction programs. We quantify our carbon usage and then purchase carbon credits from various projects to offset our impact. We believe investing in the renewable energy industry will help our economies transition from a fossil fuel-dependant society to a cleaner, renewable energy future.

The main sources of carbon emission from our trips (transport, accommodation and waste) are also expertly assessed and offset into renewable energy projects. Each Antarctic expedition ensures an authentic, sustainable and carbon offset experience.

A few projects we purchase carbon credits from:

Solar Farm Project - Bambous, Mauritius
This project supports technology transfer, energy transition and the first ever solar farm in Mauritius. The project has created 20 local jobs and saved 220,000 tonnes of CO2 entering the atmosphere.

Rainforest Rehab - Malaysian, Borneo
This project works to replant trees and avoid deforestation of the natural jungle and prevent palm oil plantations being planted. This all contributes to helping sustain the local wildlife

EXPEDITION ESSENTIALS

From Head to Toe

Packing is often the least popular aspect of any holiday – but packing for the Polar regions can be particularly daunting.

It is one of the most extreme environments you are ever likely to find yourself in, so staying warm and dry is vital when the weather is so unpredictable. But don't worry, we have you covered.

Dressing for shore landings:

A full packing list will be provided that offers detailed information on what to pack to help you prepare for your Antarctic voyage. Please ask your booking agent for more information.

GOLDEN RULES

Rule #1: Layers, layers, layers

Rule #2: Wear breathables (wool, not cotton)

Rule #3: Waterproof, not water repellent

Rule #4: Protect your extremities

Rule #5: Remember the SPF



PROVIDED EXPEDITION GEAR

Staying warm and dry during your voyage is vital. Our Expedition gear has been carefully selected and has all the important features to ensure maximum enjoyment on your Antarctic adventure.

You will receive a quality manufactured Polar parka, included with every voyage you take with us. Our Expedition Jacket, meticulously designed by our expert team based on many years of experience in harsh environments, is two-fold:

- a robust outer layer engineered to defy even the toughest polar weather conditions, provided to you on loan.
- a lightweight insulated inner layer. Designed to be worn under your outer layer during off-ship excursions but also a great outer layer for your time onboard the ship, yours to take home at the end of your journey as a reminder of your epic adventure to the White Continent!

MUCK BOOTS (ON LOAN)

We will provide black, rubber Muck Boots for the entire duration of your voyage. They are specifically engineered to deliver grip and performance on snow and ice while keeping your feet warm and dry.

More information about all Expedition gear including sizing options, as well as a full packing list will be provided to you on confirmation of your Ocean Endeavour Antarctica expedition.



EXPEDITION PARKA (ON LOAN)

A water repellent coating on the outer layer helps to move moisture away from the body, making this a breathable and light jacket. With hi-vis elements, large pockets for easy accessibility and watertight seals, this is the perfect parka to keep you warm and dry on the ship to shore Zodiac excursions in all kinds of weather.



INSULATED INNER JACKET (YOURS TO KEEP)

Made out of 100% recycled synthetic fibres, your vegan 600 fill insulated puffer jacket will keep you warm even on the wildest days of your expedition. With a Durable Water Repellent (DWR) finish, which encourages water to bead off the fabric's surface, the jacket was produced using sustainable chemistry with minimal impact on people and the environment. A great memento to take home at the end of your voyage to remember your incredible Antarctic adventure!



Agent details

--