



ANTARCTICA

Immersive Collection



chimoadventures.com



ANTARCTICA - THE IMMERSIVE COLLECTION

We invite you to discover our favourite expedition vessels; Ocean Victory, Ocean Albatros, MS Seaventure and Ocean Nova.

Each ship offers its own unique onboard experiences and design features. More importantly, they create a remarkably seamless transition from onboard comfort to off-ship exploration and discovery and place the highest premium on sustainable practices and leaving a minimal carbon footprint in their wake. On this journey, Antarctica itself is always front and centre.

On these beloved expedition ships, small passenger numbers and experienced crew mean your ship can access small and remote inlets that larger ships can't reach, with flexibility to tailor each day for maximum adventure! In optimal conditions, you'll enjoy two landings off ship each day for multiple hours on shore, zodiac cruising, or silently kayaking through icy waters, always guided by your passionate and experienced expedition team.

Each ship also offers a suite of citizen science programs, ideal for travellers who want to give back to scientific research.

Let our team help you find the perfect expedition voyage for you – the haunting beauty of Antarctica awaits.



CONTENTS

INTRODUCTION	
The Immersive Collection.....	2
ANTARCTICA CRUISES	
Small Ship Expeditions	4
Itineraries and Adventure Activities	5
POPULAR SHIPS	
Ocean Victory	6
Ocean Albatros	8
MS Seaventure	10
Ocean Nova	12
EXTEND YOUR TRIP IN SOUTH AMERICA	
Signature South America.....	14
Signature South & Central America	16



SMALL SHIP EXPEDITIONS

An immersive experience

Antarctica is the ultimate journey, the most comprehensive, unforgettable and breathtaking trip you could ever take to the end of the world. As well as being the most mesmerising travel destination on the planet, it is also one of the most interactive.

WHAT IS THE DIFFERENCE BETWEEN SMALL SHIP EXPEDITIONS & TRADITIONAL CRUISING?

Small ship expeditions offers an alternative way to explore than you would experience on a large cruise ship. These expedition style ships are usually smaller in size and have Zodiacs on board so you can spend time out exploring the wilderness led by a highly trained expedition team.

Expedition guests are usually more interested in exploring a place rather than going on a traditional cruise where the focus is mainly on the onboard experience.

Every expedition is different, which is what makes the experience so unique and exciting!

EXPERT GUIDES

An Antarctic expedition is nothing without passionate and experienced guides. They play such an important part in delivering the experience and are not just experts in fields like marine biology, geology, and environmental science but are also just as excited and passionate about Antarctica as you are!

Your expedition guides will interpret the wildlife you see, operate Zodiacs, assist you on excursions, and interpret the wildlife you see on excursions. They'll also lead presentations and workshops onboard to help you learn more about the Antarctic environment.

If you have any questions about anything Antarctic related, your crew is there to help. Their number one priority is keeping you safe and making sure you have an unforgettable trip of a lifetime!

SHIP SIZE & PASSENGER NUMBERS

When it comes to booking an Antarctic cruise, passenger numbers make a huge difference! This is due to strict governing rules on Antarctic ships by the International Association of Antarctic Tour Operators, or IAATO, put in place to protect the pristine Antarctic environment.

WHY UNDER 200 PASSENGERS IS BEST

Ships with 200 and under passengers allow for the most opportunities to get off the ship and explore. Only 100 passengers per ship can be on shore at once, so you alternate between zodiac cruising and passengers on land allowing two excursions per day.

On ships with 200-500 passengers, the crew will need to alternate passenger groups and you may only have the chance to go on land once per day or once every other day. With time limits strictly in place for shore excursions, this means you're limited in your ability to explore.

Large ships with over 500 passengers are not permitted to make landings on Antarctica and have limited access due to their size.



ANTARCTIC ITINERARIES

There are many variations of itineraries for the Antarctic region, but they are all based on these main locations.



South Shetland Islands & Antarctic Peninsula

- ✓ Most popular itinerary
- ✓ Shortest timeframe
- ✓ Iconic Wildlife
- ✓ Departures available all season

* Some Peninsula itineraries include the Weddell Sea



Antarctic Circle, Peninsula & South Shetland Islands

- ✓ More time on the peninsula
- ✓ Be one of the few to cross the Antarctic Circle
- ✓ Iconic Wildlife
- ✓ Only available mid season



Antarctica, South Georgia & Falklands

- ✓ Longer itinerary
- ✓ Extensive wildlife exploration in South Georgia
- ✓ Historic landmarks
- ✓ Only a few departures per season

INCLUDED ADVENTURE ACTIVITIES



ZODIAC CRUISING

Get from ship to shore on these exciting Zodiac rides.



SHORE EXCURSIONS

Get up close to the penguins and set foot on the great white continent.



POLAR PLUNGE

Take the plunge into the icy and exhilarating depths of Antarctic waters.

OPTIONAL EXTRA ACTIVITIES

These activities are available on these vessels and are dependent on weather and departure date. Some at an additional cost.



DAY PADDLE

A one time opportunity to kayak on inflatable kayaks during your Antarctic trip and is suitable for both complete beginners and experienced kayakers.



CAMPING

Fall asleep amid the snow-capped mountains as you watch the colours of the Antarctic twilight bounce off the ocean and surrounding glaciers.



SNOWSHOEING

Snowshoeing allows you to explore further afield from the landing sites and reach the less-visited places that few other visitors see.



OCEAN VICTORY

WHY WE LOVE THE MV OCEAN VICTORY

- ✓ This modern ship was designed to minimise fuel consumption and operate with a focus on sustainability
- ✓ Almost all cabins have their private balcony, a luxury not seen on all ships
- ✓ Built with X-Bow technology, you'll enjoy increased stability in rough water conditions

“A sophisticated and contemporary vessel that highlights the breathtaking allure of Antarctica.”

Length: 104m
Breadth: 18m
Gross Tonnage: 7400
Speed: 16 Knots
Passengers: 146-200
Expedition Staff to Pax Ratio: 1:12
Ice Class: 1A



FEATURES

Innovative design

The Ocean Victory is built with unique technologies and sturdy construction. The ship's X-Bow provides high stability in rough seas and some of the smoothest movement on high waves, accompanied by Ice Class 1A classification for cutting through difficult ice conditions.

Modern and luxurious amenities

This modern ship offers everything you could want on your Antarctic cruise, including a Polar Spa, contemporary lecture theatre, fitness centre, Jacuzzis and an infinity pool, plus fine dining within the Panorama Specialty Restaurant. With floor-to-ceiling windows, you can dine surrounded by the beauty of Antarctica.

Low-energy construction

Similar to other vessels in its class, the MV Ocean Victory was built with a strong focus on sustainability, in an attempt to preserve the unique environments through which it sails. A low-energy vessel, the Victory has four diesel engines and two electro engines, all controlled electronically to optimise speed and minimise fuel consumption.

Generous staterooms

Stylishly designed cabins, most with private balconies, are adorned in a blue and white hue, a nod to your polar travel. With modern design and plenty of room for storage, you'll feel right at home as you travel to the remote regions of our planet.

DEPARTURE DATES

Peninsula Cruises

10 days

South Shetland Islands & Antarctic Peninsula

02, 11, 20, 29 Jan, 07, 16, 25 Feb 2026, 22 Nov, 19 Dec 2026, 08 Jan 2027

12 days

Highlights of Southern Spring

14 Nov 2026

Antarctic Circle Cruises

12 days

The Ultimate Antarctica Experience

05 Dec 2025, 28 Dec 2026, 13 Feb 2027

Falklands, South Georgia & Antarctica

18 days

Falklands, South Georgia & Antarctica

16 Dec 2025

19 days

Epic Falklands, South Georgia & Antarctica

17 Jan 2027

CABINS



COMMON AREAS





OCEAN ALBATROS

WHY WE LOVE THE MV OCEAN ALBATROS

- ✓ Patented X-Bow technology increases stability, creating a smoother sailing across the Drake Passage
- ✓ It's ideal for solo travellers, with 12 dedicated cabins with no single supplement
- ✓ Built with sustainability at front of mind, the Ocean Albatros boasts 50% less emissions, compared to traditional polar vessels

“An elegant and modern ship that showcases the beauty of Antarctica”

Length: 104.4m
Breadth: 18.4m
Gross Tonnage: 8500
Speed: 16 Knots
Passengers: 189
Expedition Staff to Pax Ratio: 1:12
Ice Class: 1A



FEATURES

Travel in comfort

With 94 staterooms and suites, most with private balconies, you'll love the comfort of travelling on this beautiful ship. Rooms are stylish and modern, adorned in a serene blue and white colour palette.

Responsible travel

Powered by diesel and electric engines, controlled electronically, this allows the captain to optimise efficient fuel use and reduce emissions. The ship also has strict policies on recycling, limits plastic use, and educates guests onboard via expert lectures on science and conservation.

Intimate and personalised

As an expedition ship with fewer than 200 passengers, you'll have twice-daily (weather permitting) excursions off the ship, including zodiac cruising and shore landings.

Unparalleled Antarctic viewing opportunities

The Ocean Albatros is designed to showcase the beauty of Antarctica, with floor-to-ceiling windows in common areas and unique hydraulic viewing platforms at water level, ideal for photography. All cabins also have unobstructed views, making it easy to enjoy the scenery from indoors.

DEPARTURE DATES

Peninsula Cruises

10 days
South Shetland Islands & Antarctic Peninsula
03 Jan, 23 Jan, 11 Mar 2026
05 Nov 2026, 04 Jan, 13 Jan, 01 Mar, 10 Mar, 19 Mar 2027

11 days
Adventures in Antarctica
13 Nov 2026

11 days
Antarctica All Access
31 Jan, 09 Feb 2026

12 days
Celebrating Antarctica
22 Nov, 02 Dec, 12 Dec 2026

13 days
Antarctic Peninsula & The Extreme Weddell Sea
07 Nov 2025, 12 Jan 2026 (12 days)

Antarctic Circle Cruises

12 days
Quest for the Circle
28 Feb 2026

14 days
Crossing the Antarctic Circle
22 Dec 2026

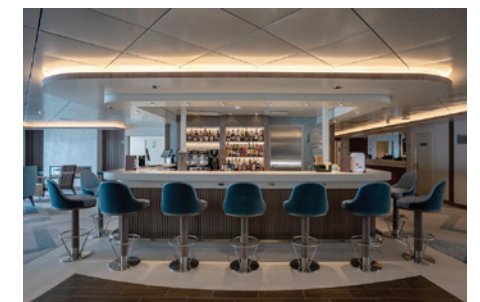
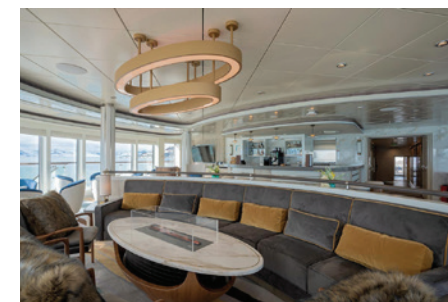
Falklands, South Georgia & Antarctica

19 days
Epic Falklands, South Georgia & Antarctica
16 Dec 2025, 11 Feb 2027

CABINS



COMMON AREAS





MS SEAVENTURE

WHY WE LOVE THE MS SEAVENTURE

- ✓ With a 1-A super Ice class rated hull and innovative design, you can travel both fast and in comfort, maximising your time in Antarctica
- ✓ Lower-level wraparound decks are ideally placed for wildlife viewing, easily accessible from throughout the ship
- ✓ No internal cabins, stylish interiors, and evening fine dining means you don't need to sacrifice luxury to have an Antarctic expedition cruise

“An immersive ship that focuses on getting you out on the ice”

Length: 111.5m
Breadth: 17m
Gross Tonnage: 6752
Speed: 11 Knots
Passengers: 139-149
Expedition Staff to Pax Ratio: 1:8
Ice Class: 1A Super



FEATURES

Speed and comfort

Optimised entirely for Antarctic voyages, the MS Seaventure cuts through the Drake Passage with ease. State-of-the-art marine retractable stabilisers reduce movement significantly inside the ship, rendering the voyage across the Drake not only more efficient but smoother than most other expedition ships.

Education and science focused

Each guest on board can be involved and gain a deep understanding of the location whilst sending data back to significant scientific organisations to help with their critical research on Antarctica. Each journey also offers onboard scientific and educational lectures.

Friendly and inclusive

Your expedition crew will dine with guests during meal times, sharing their personal insights into Antarctica and getting to know the people they are travelling with

7:1 traveller to expedition staff ratio

Coordinating excursions is the number one priority and unless weather conditions prevent it, guests will spend up to six hours a day off the ship and immersed in Antarctica.

Spacious outdoor viewing

A full wraparound deck, close to the water, is a must have in Antarctica and a photographer's dream. Offering brilliant viewing of wildlife and Antarctica as it happens in 360 degrees.

DEPARTURE DATES

Peninsula Cruises

11 days
Adventures in Antarctica
09 Nov 2025, 16 Feb 2026

11 days
Whale Season in Antarctica
15 Mar 2026, 14 Mar 2027

12 days
Christmas in Antarctica
18 Dec 2025

12 days
Antarctica All Access
18 Nov, 08 Dec 2025

12 days
Celebrating Antarctica
28 Nov 2025, 15 Jan, 25 Jan 2026,
09 Feb, 04 Mar 2027

Antarctic Circle Cruises

14 days
Crossing the Antarctic Circle
04 Feb 2026

15 days
Ultimate Circle Crossing
27 Jan, 19 Feb 2027

Falklands, South Georgia & Antarctica

20 days
Falkland Islands, South Georgia and Antarctica
22 Oct, 28 Dec 2025, 25 Feb 2026
09 Jan 2027

CABINS



COMMON AREAS





OCEAN NOVA

WHY WE LOVE THE OCEAN NOVA

- ✓ With only 80 passengers, the Ocean Nova is one of the few ships to still offer a classic Antarctic expedition experience
- ✓ The ship's small size makes it more agile, allowing it to enter bays and coves that larger ships cannot
- ✓ Thanks to efficient design and low fuel consumption, the Ocean Nova offers one of the lowest emission levels within the Antarctic cruising industry

“A classic expedition experience that will get you closer to the action”

Length: 73m
Breadth: 11m
Gross Tonnage: 2,183
Speed: 11 Knots
Passengers: 80
Expedition Staff to Pax Ratio: 1:12
Ice Class: 1B (Hull Ice A)



FEATURES

Small and nimble

With a superior ice-class rating and a reinforced hull, the Ocean Nova is designed to navigate remote locations that larger vessels cannot reach.

Classic Antarctic expedition experience

The Ocean Nova is one of the few ships accommodating fewer than 100 guests, allowing for an intimate exploration of Antarctica aboard our purpose-built expedition ship. This means everyone can go on shore at the same time, reducing waits and maximising your time off the vessel.

Responsible travel

Boasting one of the lowest fuel emissions in the Antarctic expedition cruise industry, averaging 3.5 - 4 metric tonnes per day. Its compact size, efficient design, and low fuel consumption ensure minimal environmental impact while exploring the pristine polar regions..

Friendly and relaxed onboard atmosphere

The intimate size of the Ocean Nova creates a warm and inviting atmosphere, perfect for fostering a spirit of adventure.

Best ship for charters

With less than 80 guests, it is more affordable and easier to fill compared to much larger vessels.

Contact us for details.

DEPARTURE DATES

Peninsula Cruises

11 days

Best of Antarctica: Whale Journey

28 Feb, 09 Mar, 18 Mar 2026,
10 Mar 2027

11 days

Best of Antarctica: Pristine Wilderness

16 Nov 2026

11 days

Best of Antarctica: Wildlife Explorer

06 Dec, 26 Dec 2026, 26 Jan 2027

11 days

Best of Antarctica: The Holy Grail

with Special Guest Mark Seymour
06 Dec 2026

12 days

Best of Antarctica: Whale Discovery

16 Feb 2027

13 days

Best of Antarctica: In Depth

25 Nov, 15 Dec 2026

Antarctic Circle Cruises

14 days

Journey to the Antarctic Circle

04 Feb, 26 Feb 2027

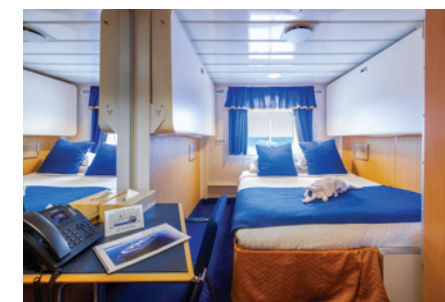
**Falklands, South Georgia
& Antarctic Circle**

24 days

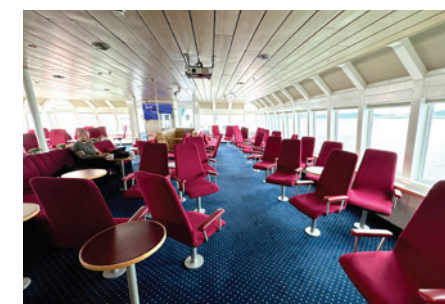
**Ultimate Antarctica: Falklands, South
Georgia & the Antarctic Circle**

04 Jan 2027

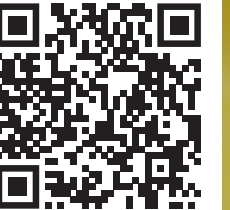
CABINS



COMMON AREAS



Signature South America



SCAN to view all
South America tours

Extend your trip in South America. Chimu offers superior styled itineraries that have been refined, simplified and perfected, especially for the discerning traveller and their travel party.

Signature South America Circle



21 DAYS

- DAY 1-2** Santiago, Chile
- DAY 3** Valparaiso and the Casablanca Valley, Chile
- DAY 4-6** Buenos Aires, Argentina
- DAY 7-9** Iguazu Falls, Argentina & Brazil
- DAY 10-12** Rio de Janeiro, Brazil
- DAY 12-13** Lima, Peru
- DAY 14-15** Sacred Valley, Peru
- DAY 16** Machu Picchu, Peru
- DAY 17-19** Cusco, Peru
- DAY 20-21** Santiago, Chile

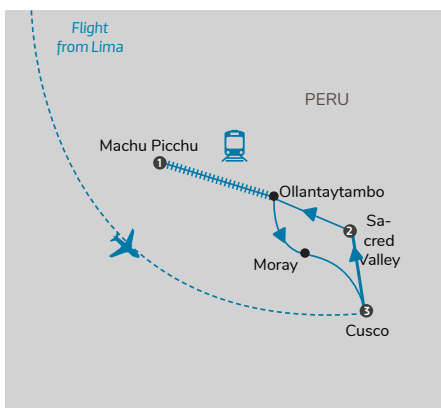


Signature Peru



9 DAYS

- DAY 1-2** Lima, Peru
Enjoy a walking food tour
- DAY 3-4** Sacred Valley, Peru
Sacred Valley of the Incas tour
- DAY 5-6** Machu Picchu, Peru
Scenic train ride and guided Machu Picchu tour
- DAY 6-9** Cusco, Peru
Full day tour



Signature Patagonia



9 DAYS

- DAY 1-2** Santiago, Chile
Half day tour
- DAY 3-6** Torres del Paine, Chile
Stay in an all-inclusive lodge of your choice and explore Patagonia with activities including hiking, horse riding and bike riding
- DAY 7-9** El Calafate, Argentina
Perito Moreno Glacier boat cruise



Signature Buenos Aires to Rio



9 DAYS

- DAY 1-3** Buenos Aires, Argentina
Half day city tour, Asado, Tigre Delta cruise and Tango Show
- DAY 4** Iguazu Falls, Argentina
Full day tour
- DAY 5** Iguazu Falls, Brazil
Half day tour
- DAY 6-9** Rio de Janeiro, Brazil
City tour including cable car up Sugarloaf mountain, Christ the Redeemer and half day historical tour.

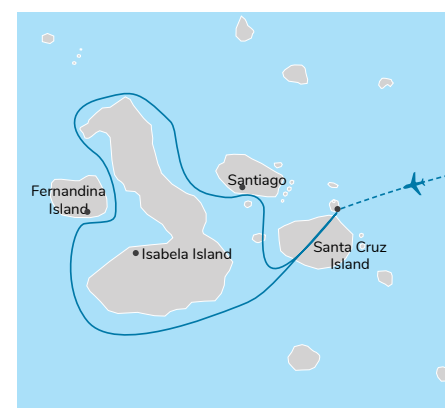


Signature Galapagos



11 DAYS

- DAY 1-3** Quito, Ecuador
- DAY 4** Galapagos Islands
- DAY 5** Fernandina Island
- DAY 6** Isabela Island
- DAY 7** Fernandina Island
- DAY 8** Santiago Island
- DAY 9** Rabina Island
- DAY 10** Bartolome Island
- DAY 11** Santa Cruz Island



Signature Salt Flats

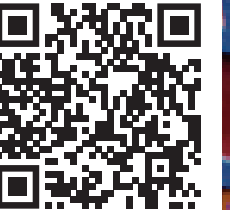


11 DAYS

- DAY 1-3** San Pedro de Atacama, Chile
- DAY 4** Bolivian Altiplano, Bolivia
- DAY 5-6** Uyuni Salt Flats, Bolivia
- DAY 7** La Paz, Bolivia
- DAY 8** Puno, Peru
- DAY 9** Lake Titicaca, Peru
- DAY 10-11** Puno, Peru



Signature South & Central America



SCAN to view all
South America tours

Extend your trip in Latin America. Chimu offers superior styled itineraries that have been refined, simplified and perfected, especially for the discerning traveller and their travel party.

Signature Colombia



9 DAYS

- DAY 1-2** Bogota, Colombia
Enjoy a city tour
- DAY 3-5** Medellin, Colombia
Full day tour of Guatape and a half day tour of Medellin
- DAY 6-9** Cartagena, Colombia
Tour Cartagena and San Basilio de Palenque



Signature Costa Rica



9 DAYS

- DAY 1-2** San Jose, Costa Rica
Tour of Doka Estate and Parque Nacional Volcan Poas, passing through Alajuela
- DAY 3-4** Arenal, Costa Rica
Visit Mistico Arenal Hanging Bridges and Volunteer at a Wildlife Rescue Centre.
- DAY 5-6** Monteverde, Costa Rica
Pontoon boat ride and a cloud forest tour in a sky tram
- DAY 6-8** Manuel Antoni, Costa Rica
Tour the National Park



Signature Mexico



9 DAYS

- DAY 1-5** Mexico City, Mexico
TOur of Mexico City, hot air balloon adventure at Teotihuacan and visit to Coyoacan
- DAY 5-6** Merida, Mexico
Half Day walking street food tour
- DAY 7-9** Playa del Carmen, Mexico
Guided tour of Chichen Itza on the way to Cancun

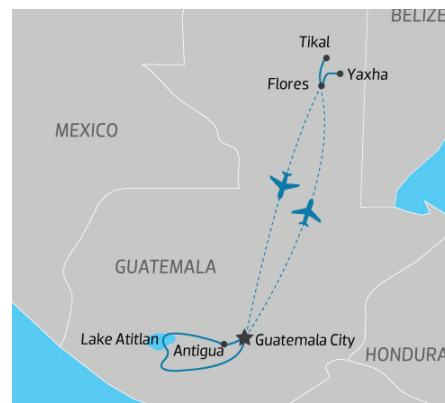


Signature Guatemala



9 DAYS

- DAY 1-4** Antigua, Guatemala
Tour of Antigua with street eats tasting and visit Iximche and a boat trip on Lake Atitlan
- DAY 4-7** Flores, Guatemala
Visit Laguna Yaxha and Tikal National Park
- DAY 8-9** Guatemala City, Guatemala
Free to explore



Signature Peru Inca Trail



10 DAYS

- DAY 1-2** Lima, Peru
- DAY 3-4** Cusco, Peru
Walking tour & Sacsayman
- DAY 5-8** Inca Trail
Premium camping equipment, gourmet meals, and private guide for a comfortable yet adventurous experience
- DAY 9** Machu Picchu, Peru
Guided tour of Machu Picchu then take a train ride back to Ollantaytambo
- DAY 10** Cusco, Peru



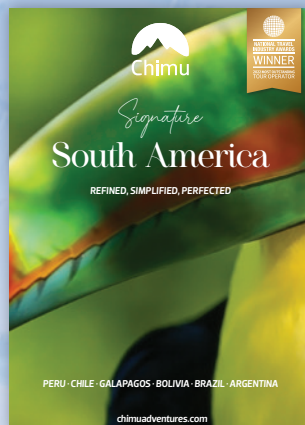
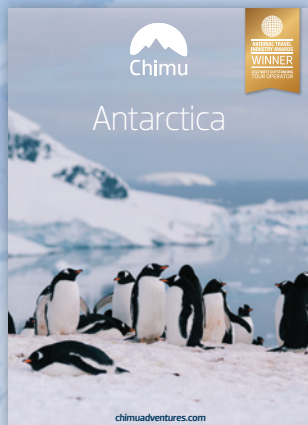
Signature Ecuador



9 DAYS

- DAY 1-2** Quito, Ecuador
Six senses city tour
- DAY 3** Cotopaxi Volcano, Ecuador
- DAY 4** Chimborazo National Park
- DAY 5-6** Riobamba - Cuenca, Ecuador
Visit 'Balbanera' Church and village of Guamote
- DAY 7** Saraguro, Ecuador
Visit Guera & Pucara
- DAY 8-9** Guayaquil, Ecuador





THE POLAR AND SOUTH AMERICA TRAVEL SPECIALISTS

Chimu Adventures is a specialist travel operator with over 20 years of experience in Antarctica, the Arctic, and South America. We don't try to do it all—instead, we focus on what we know best and our knowledgeable staff have a true passion for the Polar regions and South America.

As South America specialists, we also have ground operations throughout South America, ensuring we're with you, and your clients, every step of the way.

Think South America and Antarctica - Think Chimu!

Your travel agent:



Call 1300 720 564
www.chimuadventures.com