



South Pole

Scenic Flight

DEPARTING 03 DECEMBER 2023



chimuadventures.com



Amundsen Scott South Pole Station

SOUTH POLE SCENIC FLIGHT

Follow the routes of famous explorers

Our South Pole flight is the first and only commercial scenic flight to the South Pole directly from Australia, making it a unique opportunity for Antarctica enthusiasts and Bucket listers alike.

Leaving from Melbourne on the 27th of November 2022, this will be heralded as the longest domestic flight known to Australians, as this flight will never officially leave Australia.

The flight will leave early in the morning and head directly toward Antarctica where the sightseeing will begin. Below you, the wonders of Antarctica will burst into view as we make our way past Cape Adare and over the Ross Ice shelf. Being the largest body of floating ice on the planet, close to the size of Spain, the Ross Ice Shelf often spawns enormous tabular icebergs that drift into the ocean. Fed by massive glaciers, you will be amazed at just how long it takes to fly from one side to the other of this incredible body of ice, before it is time to cross the Transantarctic mountains and fly over the continent.

Geoff Wilson, Australian modern-day explorer, describes Antarctica like an upside dinner plate, where the mountain range represents the ridge on the bottom. After flying over the tumbling glaciers, your note the Transantarctic mountains sublimely guarding the vast Polar Plateau. Sculptured by mega dunes, sastrugi and crevasses, the expanse of interior Antarctica is far from flat nor boring and you will hear firsthand from Geoff Wilson as he describes his own world record journeys across this inhospitable terrain.

This journey will follow the route of the explorers of the heroes of Antarctic Exploration Roald Amundsen and Robert Falcon Scott as they raced to claim the title of the first person to reach the South Pole. To really understand the feat these super-humans undertook, it must be seen to be believed.

Our plan is to fly over the Beardmore Glacier, which Scott used as his pathway from the Ross Ice Shelf to the Polar Plateau, all the way to the South Pole where the South Pole station lies today, manned year-round by a team of international scientists. Here, we will conduct the seat swap for everyone to see, before returning across the white continent via Roald Amundsen's route, back to the Transantarctic mountains and the Ross Ice Shelf, completing the journey of the first person ever to reach the South pole.


During this world-first flight you will also be privy to stories from a team of Chimu Adventures Antarctica experts, who will explain the landscapes and the complex history of the explorers who tried to tame the continent. Names such as Mawson, Shackleton, as well as Amundsen and Scott will ring in your ears as you indulge in history of the Heroic Age of Antarctic Exploration.

Over the years, Chimu Adventures has built up one of largest teams of Antarctic experts within Australia and we will leverage off this team to help us deliver a fantastic inflight experience.

To cover the distance to the South Pole and back, we will need to fly mostly at cruising speed and high altitude. Once we take off we'll be heading for the South Pole irrespective of what we see. Although we look forward to the possibility of some lower altitude cruising.

As we will be on a set path toward the South Pole we will not have the option to take alternative routes to suit the weather on the day, yet we have carefully picked the best time of year to fly. With a good chance of having some clear visibility, we will be travelling almost 6,000 km to get to the South Pole. Though the exact views will be determined

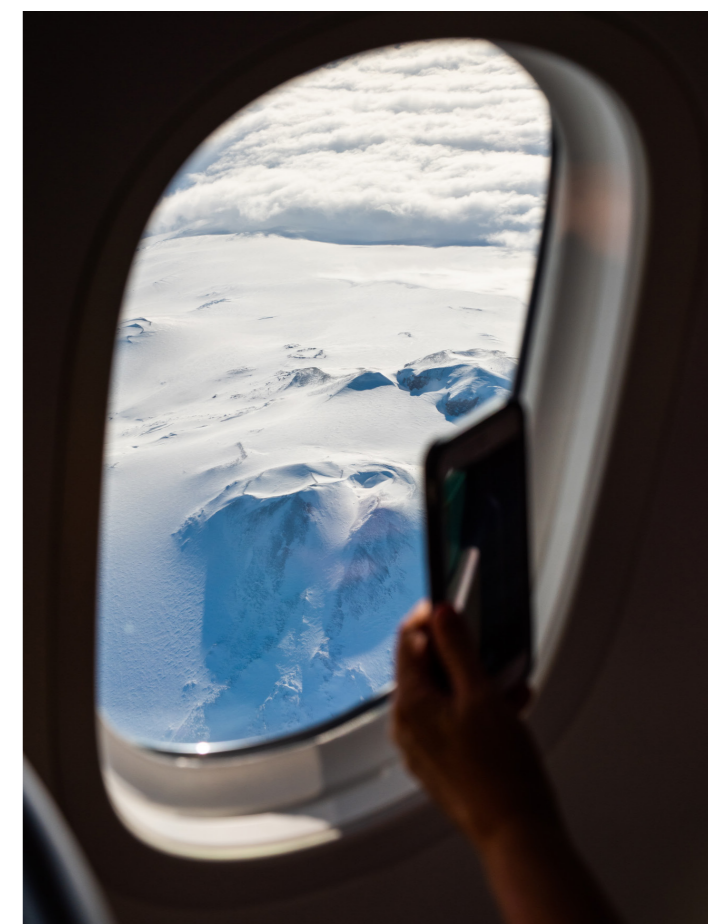
by conditions on the day, every traveller will have the prospect of a magical trip that few can claim to have done; to say that you are one of the few individuals in human history to have visited the South Pole, had the chance to appreciate the enormity of Antarctica and the truly appreciate heroic feats of Scott and Amundsen's journeys.

 To get a taste of what you will see from the air, [watch this video](#) by Geoff Wilson

*exact views will be dependant on weather conditions on the day.

TOUR INCLUSIONS

- > Seat options from Economy Class-Limited View to Premium Business
- > Two Full-Service Qantas meals plus snacks
- > Full Bar Service including champagne, beer, spirits and soft drinks
- > Choose your viewing on the in seat entertainment system
- > Knowledge and leadership by experienced Antarctica specialists, modern day explorers and specialist photographers.



FAMOUS EXPLORERS

of Antarctica



ROALD AMUNDSEN

Norway – Expedition of 1909–1911

When it comes to Antarctic exploration, testosterone really has a lot to answer for. The famous Race to the South Pole of 1911, a competition to be the first to reach the elusive spot, saw two well known Explorers of Antarctica: Norwegian Roald Amundsen, and British Robert Falcon Scott. Amundsen beat Scott to the finish line by about a month (in December 1911) and was the much-celebrated winner of the Race.

His advantages over the British explorer were not trivial. Being Norwegian, he (and his team) were adapted to harsh conditions, were experienced skiers and knew the intricacies of using dog-led sleds. True to his competitive nature, Amundsen's fervent attention to the South Pole was a rather impromptu affair. He had actually intended to be the first man to reach the North Pole, yet once he heard Americans had beaten him to it in 1909, he promptly made a U-turn and headed to the South Pole instead. Much to Scott's eventual anguish.

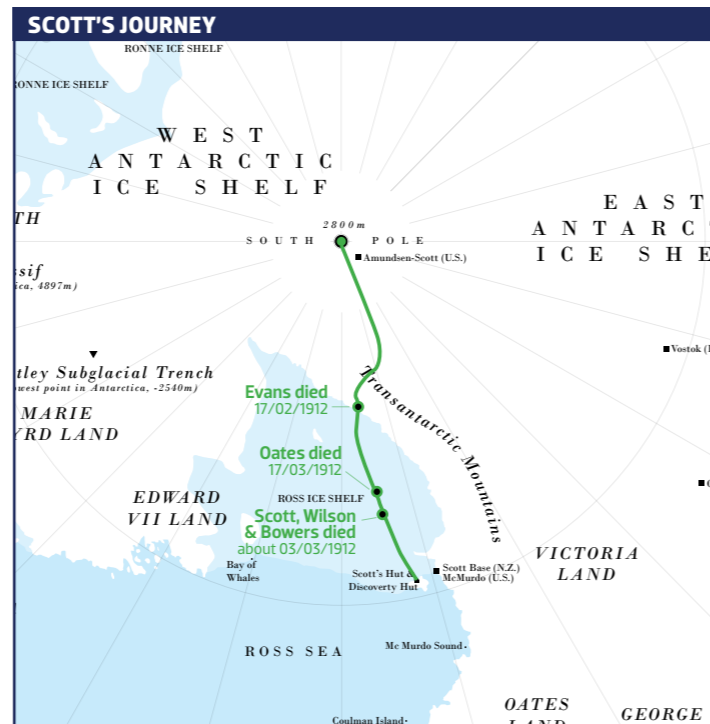
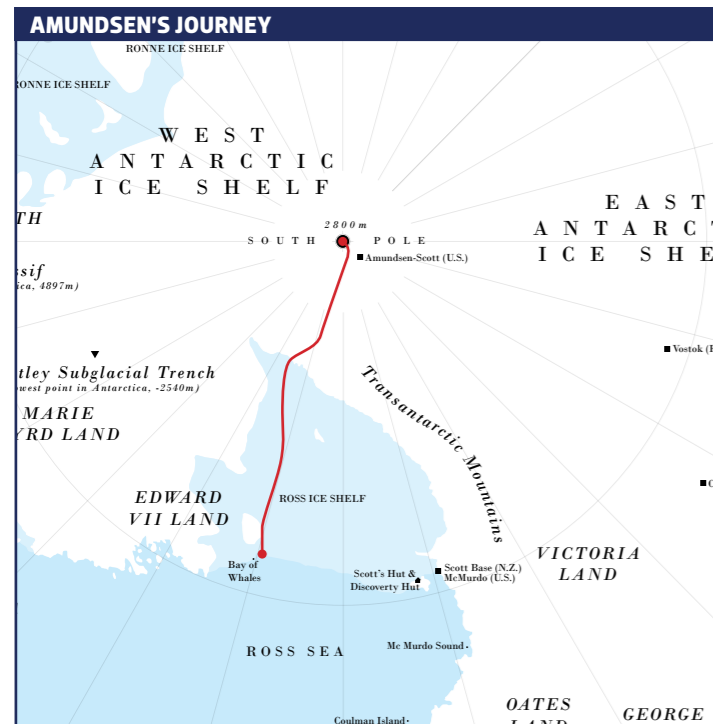


ROBERT FALCON SCOTT

Great Britain – Expeditions of 1901–1904, 1910–1912

Captain Robert Falcon Scott made two attempts at reaching the South Pole. In the first, aboard the Discovery in 1901 (accompanied by Sir Ernest Shackleton) he failed to reach his intended target, although he still made it farther than anyone else had at that time. Scott is, however, mostly renowned for his rather catastrophic second attempt, which he undertook in 1910.

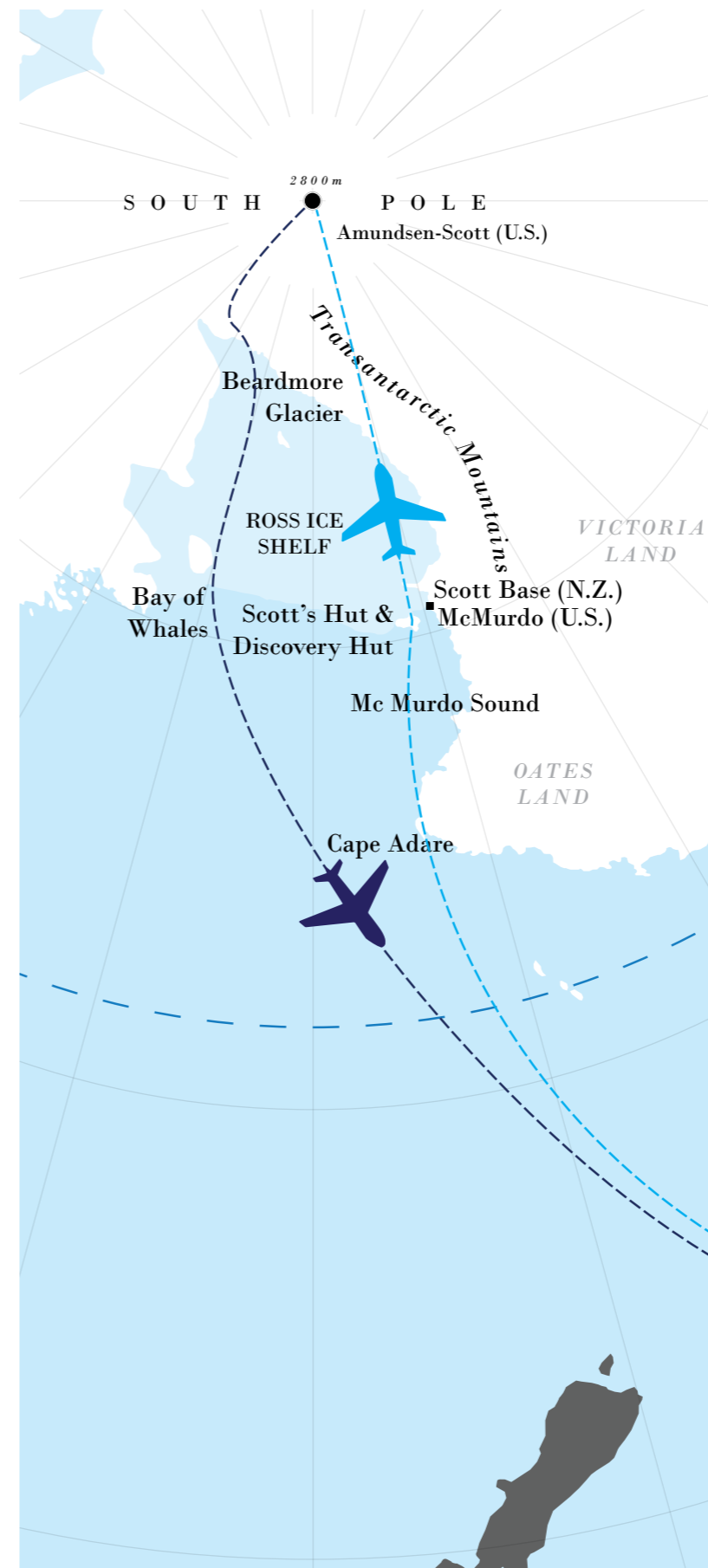
Scott's inability to utilise sled-dogs and his inexperience with purchasing suitable beasts of burden literally set his mission on a failing-course right from the start. Scott and his team eventually reached the South Pole in January 1912, where they discovered Amundsen's recent visit. Colossally disappointed and completely exhausted, Scott perished at Camp Evans just before setting off for his return trip home. Some will say of a broken spirit.



SOUTH POLE SCENIC FLIGHT

Planned Flight Path

Before seat swap
 After seat swap



Cape Adare

Cape Adare is the location where, in 1984, the Australian/Norwegian explorer Carsten Borchgrevink arguably became the first man to step ashore Antarctica. In 1899, he and Australian scientist, Louis Bernacchi, returned to Cape Adare as part of their "South Cross Expedition". This expedition became the first party to overwinter on the Antarctic mainland.

Ross Ice Shelf

Named after Sir James Ross in 1841, the Ross Ice shelf is the largest floating body of ice on earth, roughly the size of Spain. It has been the starting point for many attempts to reach the South Pole, both failed and successful.

Beardmore Glacier

One of the world's largest valley glaciers, it was discovered by Ernest Shackleton in 1908 when he became the first person to step foot on the polar plateau. Robert Falcon Scott climbed the glacier on his quest to the South Pole.

Transatlantic Mountains

Separating East and West Antarctica, this mountain range was sighted first by James Clarke Ross in 1841 and was first crossed by the British National Antarctic Expedition in 1901–4 many explorers followed them.

South Pole Station

The Amundsen Scott South Pole station today is a scientific research station. The first structure was built in 1956 by the United States as a part of its commitment to international scientific research at the polar regions.

Bay of Whales

This is the southernmost point of open ocean before the Ross Ice Shelf. Here Roald Amundsen established a temporary base during his quest for the South Pole. It was also used by many other Antarctic explorers.

The route past each of these locations is indicative only and actual route will be dependent on conditions on the day



QANTAS DREAMLINER

Providing optimal comfort and space

Providing optimal comfort and space for every passenger is at the core of the Qantas Dreamliner design which features 236 seats – less than most other aircraft of its type.

The aircraft is fitted with state-of-the-art technology to reduce turbulence, improve noise quality and reduced aircraft vibrations for a smoother flight. Every seat has been designed to offer the ultimate comfort for long-haul flyers.

The windows on the Dreamliner are 65% larger than comparable aircraft windows, providing an increased sense of space and the opportunity for passengers to see more of the world.

Choose your seating options:

- PREMIUM BUSINESS CLASS
- BUSINESS CLASS
- PREMIUM ECONOMY CLASS
- ECONOMY NO WING
- ECONOMY CLASS WING
- ECONOMY CLASS – LIMITED VIEW

All seating classes will experience spectacular views and an unforgettable round-trip including:

- Two full-service Qantas meals plus in-flight snacks
- Celebrate your adventure with champagne, wine, beer, spirits, and soft drinks as you enjoy a full bar service onboard.
- Choose your viewing on the in seat entertainment system.

SEAT SWAP PROCESS

Cabin Crew will advise you when the seat swap process will commence.

Seat swap process will occur by cabin and by row number.

Our team on board will assist in the seat swapping process.

You will be required to tidy your own seat area prior to vacating as follows:

- Collect all rubbish from the seat back pocket and within the seat area, placing in the white bag provided
- Wipe down tray table
- Wipe down seatbelt and buckle
- Wipe down IFE screen and control
- If in window seat, wipe down window and shade

Refer to your second boarding pass for the location of your next seat.

You will need to take with you to your next seat:

- Blanket
- Pillow
- Headset
- Your personal items will remain in the original overhead locker

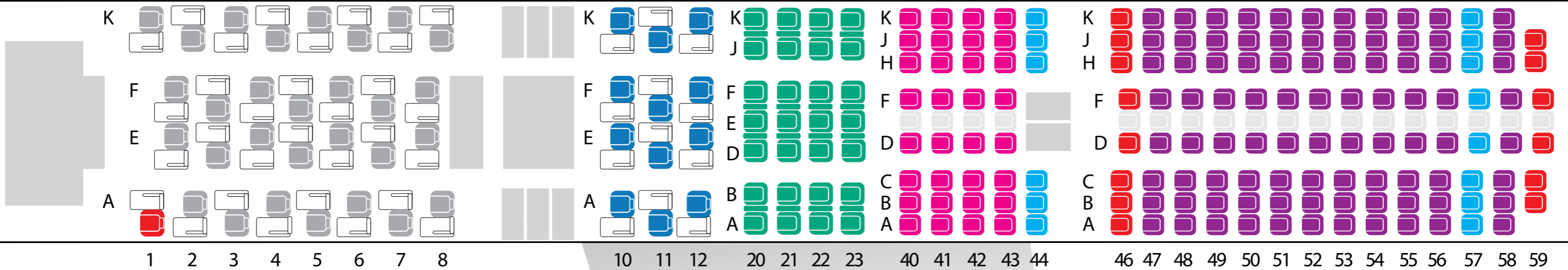
Crew will move through the cabin to collect rubbish once seat swap has been completed.

Wipes will be provided by crew during the flight.



SEATING PLAN

■ Reserved ■ Empty seat



PREMIUM BUSINESS CLASS - \$10,885

Admire wide views in utmost comfort with full international business class service in a Premium Business Class seats. The windows in the Dreamliner are 65% larger than comparable aircraft windows.

In Premium Business Class, you will enjoy a super soft leather seat that transforms into a luxurious two-metre lie-flat bed, with a memory foam mattress, two full-size pillows and a cosy duvet. The extensive storage space, wide range of seat adjustments and in-seat massage options will suit your personal needs. And all lie-flat beds have direct aisle access. As per the below seat swap diagram the window and adjacent aisle seats will swap throughout the flight to give everyone ample time in the window seat.

Seat swap:



BUSINESS CLASS - \$8,795

Enjoy the same wonderful seating and service as Premium Business Class customers. The difference is, the seats are situated over the front of the wing. This does slightly obstruct views, however some photographers like the wing as it gives great perspective in images and video. These seats will undergo a swap as per the below diagram to ensure everyone gets ample time in a window seat.

Seat swap:



PREMIUM ECONOMY CLASS - \$6,095

Stretch out and relax in Qantas's award-winning Premium Economy cabin, with luxurious levels of space and attentive service. Seated in an intimate and private cabin, you'll enjoy the benefits of flying premium with a well thought out seat design, indulgent touches to make you feel at home plus a refreshed menu and an extensive wine list. All while you enjoy magnificent views of Antarctica through large windows. As per the below diagram there will be a seat swap during the flight to give everyone the opportunity to get better views through the large windows.

Seat swap:



ECONOMY CLASS NO WING - \$4,355

These economy seats have unobstructed views from the windows. All economy customers will enjoy a full meal service for dinner & breakfast. On the Dreamliner B787's you'll enjoy the next generation and award-winning Recaro seat, ergonomically designed for optimal comfort. Everything has been thought of to support your travel needs – mood lights, storage areas, inflight entertainment and even a personal electronic device shelf. As per the below diagram there will be a seat swap during the flight to give everyone the opportunity to get better views through the large windows.

Seat swap:



ECONOMY CLASS WING - \$2,965

These economy seats are over the wing. This does obstruct views however many photographers like the wing as it gives great perspective in images and video. All economy customers will enjoy a full meal service for dinner & breakfast. As per the below diagram there will be a seat swap during the flight to give everyone the opportunity to get better views through the large windows.

Seat swap:



ECONOMY CLASS LIMITED VIEW - \$1,865

Limited View seats do not have direct access to a window. These passengers are given priority access to stand in the common areas to enjoy the view. Passengers will enjoy Qantas's International service. All economy customers will enjoy a full meal service for dinner & breakfast as well as inflight entertainment. These seats do not rotate.

2023 SOUTH POLE SCENIC FLIGHT PRICING

DEPARTING MELBOURNE	PREMIUM BUSINESS	BUSINESS	PREMIUM ECONOMY	ECONOMY NO WING	ECONOMY WING	ECONOMY LIMITED VIEW
03 DEC 2023	\$10,885	\$8,795	\$6,095	\$4,355	\$2,965	\$1,865



Amundsen Scott South Pole Station

FAQs

How does the seat swap work?

We will be doing a seat swap during the flight. As can be seen on the Seat Swap diagram on the Seating Plan the aim is to give passengers in the seating classes that will be doing a seat swap time in a window seat or seat next to a window. Please Note the Economy Class – Limited View category will not be doing a seat swap. The helpful Qantas staff onboard will be facilitating the seat swap and instructing on the cleaning regime required during the process.

Where will we fly & what if it is bad weather?

Weather is not generally the issue, cloud cover is our challenge. For our South Pole flight, we will be at the mercy of the conditions on the day. As our objective is to reach the South Pole we cannot divert the route, however we anticipate many cloud free views along the way.

What time will we fly?

This flight will leave early in the morning. We will advise the exact time closer to the date.

Are there any age Restrictions for the Flight?

There are no age restriction on the flights, although please be aware that there is no discounted pricing for children.

Please Note: this is a long flight for young children and we do not recommend the trip for children aged 8 years and younger. Children under 16 years of age must be accompanied by an adult.

Can I use or redeem Qantas Frequent Flyer points or credits for my flight?

As this is a chartered flight, they do not accumulate or accept frequent flyer points. Any credits held with Qantas can also not be used to purchase these flights.

Can I access the Qantas Airport Lounge?

Yes, the Qantas Airport Lounges can be accessed for passengers who hold the required loyalty status.

Can I reserve a particular seat?

You can select a seating class but not a particular seat. The Seating allocation will be finalised close to departure taking into consideration all booking requirements.

Can I offset the carbon emissions from my flight?

As a member of Responsible Travel, we have always put measures in place to reduce our impact on the environment. We will be offsetting the carbon emissions of all the Southern Lights Flights.

COVID MEASURES

We take the health and safety of our passengers and crew seriously during COVID 19. As such we will be undertaking these additional COVID safety measures during your Aurora flight, in partnership with Qantas and airport authorities:

- To reduce congestion on board, not all seats in Economy Class will be utilised. This will allow more space for passengers.
- Each passenger will receive a personal Qantas pack for the flight including disposable mask, sanitiser and disinfectant wipes.
- There is enhanced cleaning of the aircraft with a disinfectant effective against coronaviruses including during the seat swap process. The aircraft's air conditioning system is fitted with hospital-grade HEPA filters, which remove 99.9% of all particles, including viruses. Air inside the cabin is refreshed every few minutes, ensuring high air quality.
- Additional sanitisers will be available on board throughout the duration of the flight.

TERMS & CONDITIONS

Charter Manager

Chimu Adventures Pty Ltd, 65 110 269 380, 01/308 Pacific Hwy, Crows Nest, NSW, 2065.

Charter airline

Qantas Airways Limited has been contracted as the operating Airline. However all bookings for this flight must be made via the charter.

Deposit and final payments

A non-refundable deposit per passenger is due at the time of booking equivalent to:

1. Economy class seats AUD\$500.00 per person
2. Premium Economy AUD\$750.00 per person
3. Business class seats AUD\$1000.00 per person

Final payment of your booking balance is required eight weeks prior to your departure date.

Fares:

All fares and charges are per person in Australian dollars, including GST.

Cancellation fees

If you cancel, the following fees will apply;

1. Between confirmation and eight weeks prior to departure – full loss of deposit.
2. Between eight weeks and four weeks prior to departure – full refund less 50% cancellation fee.
3. Between four weeks and departure date – no refund

Travel insurance is strongly recommended.

Amendment/transfer

Your ticket can be transferred to another person up to 48 hours prior to departure. An AUD\$150 name change service fee per change will apply. This same service fee will apply for change of class.

Travel documents

Trip information and travel documents will be forwarded to you approximately 10 days prior to travel, providing full payment has been received.

Seat numbers

Will not be confirmed in advance of the flight. They will be issued on your boarding pass at the departure airport.

Your flight contract is with Chimu Adventures

Pty Ltd. We have made every effort to ensure that photographs, pricing and all other services will be as represented. Please note that we cannot be responsible for the act or omissions of suppliers or services, or for any representation made by suppliers or third parties. The services are subject to the conditions imposed by the suppliers and their liability may be limited by their tariffs, conditions of carriage, international conventions and agreements, or customs of their businesses. Therefore, Chimu Adventures Pty Ltd. cannot assume responsibility for any claims, losses, damage, costs, or expenses of any nature arising out of injury; accident; or death, loss of, damage to, or delay in connection with baggage or other property; delay; inconvenience; upset; disappointment; stress; frustration; or loss of employment or loss of holiday time resulting from:

1. The act or fault or omission of any party other than Chimu Adventures Pty Ltd. or its employees.
2. The passenger's failure to obtain related documentation.

The passenger will not be entitled to any refund if the passenger fails to follow the instruction of Chimu Adventures Pty Ltd or its representatives.

We reserve the right to alter or cancel any services you have purchased and inclusions may vary depending on weather, or other uncertainties, and are subject to change. The photographs appearing in this brochure are representational only and are not a guarantee that everything will be exactly as depicted at the location upon arrival. Whilst every endeavour will be made to adhere to the proposed route, weather conditions may determine the actual route, according to the absolute discretion of the Captain of the aircraft.

No guarantee can be given of clear viewing conditions and no refund or part refund will be made if the views are fully or partially obscured. Alternative routes will be selected to give the best viewing if the planned route has unfavourable weather conditions.

Governing rule

The charter proposal set out herein and the participants' acceptance by completion of the booking form creates an agreement between the Charter Manager and the participants. The booking form forms part of this documentation.

Special note: An Qantas 787 aircraft will operate all flights; however, other Qantas aircraft may be substituted without notice.

Frequent flyer points do not apply.

Depending on prevailing weather conditions the routing and points of interest viewed may vary.

Alternative flight paths may enable viewing of many spectacular points of interest but clear views cannot be guaranteed.

If flight booking numbers do not reach minimum numbers then the flight may be cancelled prior to departure date and if this were to occur we'd provide a full refund but will not be responsible for any additional indirect costs. Passport identification is NOT required upon check-in.

As this is classed as a domestic charter flight, a valid photo identification card such as a drivers licence is required upon check in.

Photos/videos Photographs or videos of the flight may be used for promotional purposes. Agreeing to these terms online and acceptance of the documents indicates your acceptance and release for this material to be used for promotional and/or resale purposes.

Airline levy Airline fuel and/or security levies may apply.

Your travel agent:



Call 1300 818 634
www.chimuadventures.com