



# OCEAN ENDEAVOUR

SMALL SHIP EXPEDITIONS TO ANTARCTICA

2021/22 & 2022/23







## DEAR *Explorers*

Antarctica is one of the most extraordinary places on our planet.

The wildlife and landscapes experienced there present life in its rawest form. It is wild, remote and heartbreakingly beautiful. But most importantly, Antarctica is pristine – a natural reserve devoted to peace and science and offers the lucky few who visit it a guaranteed experience of a lifetime.

Our passion for the polar regions and the need to revere and preserve these unique environments began when we first founded our expedition company. Ever since, we have prided ourselves in immersing our travellers in these locations while operating a safe and environmentally responsible small ship expedition.

Operating our own expedition vessel, the Ocean Endeavour, allows us to focus our passion and knowledge into creating a mutually positive experience for both our travellers and the precious Antarctic environment.

Exploring with less than 200 like-minded guests on our comfortable expedition vessel means that you will have the full attention of our expert expedition team. For every eight travellers, there will be one expedition field guide – one of the best guests to guide ratios our industry has to offer.

While onboard an Antarctic expedition with us, when you are not discovering a penguin colony on land or seeing its bounty on the water during a small boat zodiac cruise, you can dive in to our robust onboard program consisting of daily presentations from our resident experts in marine biology, geology and history or relax and unwind in our onboard sauna and spa.

You can also choose to maximise your experience by enrolling in some of our additional activities such as Sea kayaking, Snowshoeing, Photography workshops or even choose to spend the night camped out on the ice. These immersive experiences will truly connect you to the ethereal elements Antarctica is known for.

The best of the Antarctic expedition for us is watching our guests as they experience their first footsteps onto the White Continent firsthand. We hope that you will join us on the trip of a lifetime onboard our new vessel, the Ocean Endeavour, to give us the opportunity to share this experience with you and to help you return home as an ambassador for the Antarctic, for wilderness and for the future of this special place.

Wishing you fair winds and following seas,

*Will Abbott*

Antarctic Operations Manager

## WHAT'S INSIDE:

### 04 ABOUT US

- 05 Onboard Educational Program
- 06 Our Antarctic Science Program
- 08 A Sustainable Experience
- 10 Sailing with Confidence
- 14 Our Expedition Team

### 18 THE ANTARCTIC

- 19 When to Visit
- 20 Our Expeditions

### 36 ADVENTURE OPTIONS

- 40 Sea kayaking
- 42 Ice Camping & Snowshoeing
- 44 Photography Program
- 46 Our Photography Guides

### 48 THE OCEAN ENDEAVOUR

- 51 Deck plan
- 52 Cabin Categories
- 54 Ship Overview

### 56 EXPEDITION GEAR







## WHY EXPLORE ANTARCTICA ONBOARD THE OCEAN ENDEAVOUR

## ONBOARD EDUCATIONAL PROGRAM

Witnessing the astounding wildlife and dramatic landscapes is an enriching and rewarding experience. But, so will your time onboard the Ocean Endeavour. To ensure your connection to Antarctica is as profound as possible, the following on-ship enhancements are included.



### It's all about exploration!

Whether it's taking your Antarctic adventure to new heights on a guided hike or feeling humbled by passing enormous icebergs, we make the most of your off-ship excursions.



### Cabins to suit everyone

Choose from a range of cabins including single, twin/double and triples. With 'willing to share' options available for solo travellers on a budget through to luxury suites, there is something to suit all travellers.



### Expedition staff to passenger ratio 1:8

This is one of the highest in the industry and ensures our guests personally experience the professionalism and expertise of our expedition team, which will maximise their experience.



### Wide range of activities

Full array of exciting adventure options including sea kayaking, camping, snowshoeing, zodiac cruising, shore landings and hiking.



### Carbon offset

All expeditions are carbon offset and we are committed to best practices, conservation and preservation of the environment.



### IAATO member

We are a member of the International Association of Antarctic Tour Operators which works to ensure safe and environmentally responsible travel.



### LECTURES BY OUR EXPERT EXPEDITION TEAM

Every expedition aboard the Ocean Endeavour will have a robust educational and science program. Our daily presentations and lectures from prominent scientists, conservationists, experts on wildlife or polar history complement the expedition experience by deepening your clients' knowledge of the Antarctic regions. Through a series of engaging multimedia presentations, the secrets of the polar worlds will be revealed.



### DAILY RECAPS

Regular briefings keep you up-to-date on scheduled activities and weather changes, ensuring you're connected to what's happening throughout your entire expedition.

Recaps are a great opportunity for our expert guides to share a snippet of what we experience during the days excursions. For example, if we observe humpback whales feeding, our marine biologist would share more information on their behaviour and feeding patterns.



### OPEN BRIDGE POLICY

The bridge is the expedition ship's command centre; this is where the magic happens! The Ocean Endeavour has an open bridge policy, which means you are welcome to visit during normal operations.

We will always have a staff member and a spare pair of binoculars on the bridge to help you interpret what we are seeing as we explore the peninsula.



# OUR COMMITMENT TO *Antarctic Science*

## MAKING A DIFFERENCE, ONE GUEST AT A TIME

Conducting scientific research to understand the many challenges of climate change facing Antarctica, can be quite costly and time-consuming. That is where our travellers can help!

During every Antarctic voyage, you have the chance to observe, record and report on natural phenomena as part of a collaboration project with Antarctic scientists.

Our dedicated Citizen Science Coordinator will lead guest-focused initiatives to maximise our contribution to scientific research. The data collected will directly contribute to a better understanding of climate change and how it is affecting the polar regions.

We will be supporting the projects offered by the Polar Citizen Science Collective, where the focus lies on five major disciplines: Oceanography, Glaciology, Ornithology, Marine Biology and Meteorology.

A selection of projects our Citizen Science Program are supporting:

### NASA'S GLOBE OBSERVER

Clouds affect how much sunlight the earth absorbs and how much heat escapes back into space. While NASA can successfully survey clouds from above, it is impossible for them to see the cloud from below.

By observing and recording cloud cover timed to NASA satellite fly-overs, we help scientists to understand how surface and air temperature are affected by cloud covers and how clouds respond to climate change.

### HAPPYWHALE

One of our most exciting onboard Citizen Science projects is the Happywhale project, which engages citizen scientists to identify individual marine mammals, for fun and for science. Every guest is encouraged to take photos of whale sightings and upload them online.

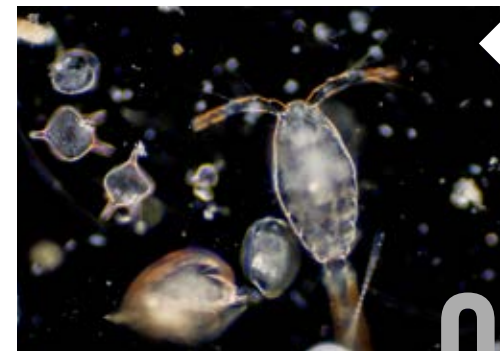


### SEABIRD SURVEY

By conducting bird surveys while at sea or on shore, we can help scientists begin to understand meso-scale (within tens of kilometres) seabird distribution patterns and habitat usage in the Southern Ocean. Our travellers will be working in small groups with an ornithologist, being out on the deck counting and identifying the various sea birds that fly around the ship.

### PENGUIN WATCH

Research has shown that in some regions, penguin populations are in decline; but why? Scientists have placed time-lapse cameras around penguin colonies across Antarctica and we encourage our travellers to count penguins to help understand how the penguin population changed, and changes in their survival rates and timing of breeding.



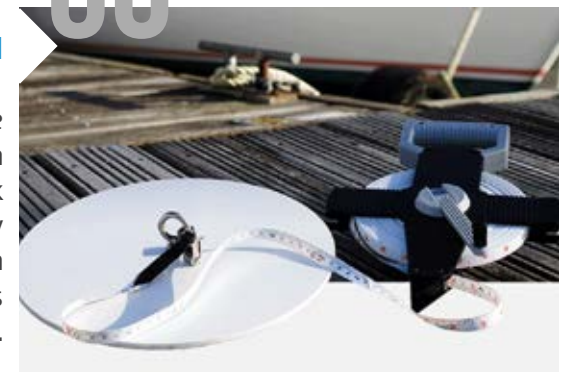
### FJORDPHYTO - PHYTOPLANKTON SAMPLING

Phytoplankton are the sea's most important inhabitants and underpins the marine food chain. It accounts for 50% of all the photosynthesis on earth and every second lungful of oxygen we inhale, was created by phytoplankton.

During this project, our travellers will collect phytoplankton as they visit various fjords throughout the austral summer.

### SECCHI DISK - STUDY OF MARINE PHYTOPLANKTON

Climate change is threatening the phytoplankton that underpins the marine food chain. Hence, understanding its distribution, composition and abundance is important. This project supports the Secchi Disk Foundation and is named after the white disk to measure the clarity of the seawater. A Secchi Deck will be used to record the Secchi Depth and will be lowered vertically into the seawater from the zodiac. This study offers participants a unique insight into the marine food chain.



## OUR ANTARCTIC PARTNERSHIPS



The **Antarctic Science Foundation** is an independent, environmental charitable organisation aiming to understand and protect the planet through Antarctic science. The principal purpose is to support world-class scientific research, which will enhance the understanding and protection of the Antarctic, Southern Ocean, and sub-Antarctic natural environments. Increased private sector support for Antarctic science will help to deepen our knowledge of the extraordinary Antarctic environment and its profound influence on global climate and ecosystems.

### MAWSON'S HUTS FOUNDATION Conserving Australia's Antarctic Heritage

We are a proud supporter of the **Mawson's Huts Foundation**. The foundation was established in 1997 with the support of the Australian government expressly to conserve Mawson's Huts at Cape Denison (Commonwealth Bay, East Antarctica), which were built and occupied by the legendary geologist and explorer Sir Douglas Mawson. Since then it has funded and organised 13 major expeditions to the historic site.



# A SUSTAINABLE

## Experience



We believe that with great travel comes great responsibility. As a travel company we know it is our duty to sustain and protect the environment we use and love. We have, therefore, taken a range of sustainability measures to ensure our expeditions have as little impact as possible while providing you with unique and authentic experiences.

'Sustainable cruising' might seem like a contradiction in terms, given the history of the big mega liners. But it's a side of the industry we want to change and why we are advocates of small ship cruising. In addition to reducing carbon levels in the atmosphere and reversing some effects of climate change by carbon offsetting all our trips, we also try to reduce our footprint by implementing the following:

- + No plastic straws onboard our vessel and working towards eliminating all single use plastics throughout our entire operation.
- + Each guest receives a reusable water bottle to use at a water refill station onboard.
- + Only sustainably sourced seafood is served.
- + Soap/shampoo dispensers are available in all bathrooms.
- + Eco-friendly cleaning products are used aboard.
- + All waste is carried with us out of Antarctica.
- + Sustainable suppliers are used wherever possible in our supply chain.
- + We are a founding sponsor of the Antarctic Science Foundation which directly supports Australian science programs throughout Antarctica.
- + We work with SeaGreen on recycling initiatives and waste minimisation in the gateway city of Ushuaia.

## LIMITING THE IMPACT

We are a member of IAATO (International Association of Antarctic Tour Operators) and comply by the organisation's guidelines in promoting and practicing safe and environmentally responsible travel to the Antarctic.

You will learn more about these guidelines on your trip, but it's good to know that tourism in Antarctica is still controlled with only 60-odd vessels registered to bring tourists to Antarctica.

IAATO, in cooperation with these ship operators, has established extensive procedures and guidelines that ensure appropriate, safe and environmentally sound travel to the Antarctic.



# OUR TRIPS ARE



## WHAT IS CARBON OFFSETTING?

Carbon offsets are a way for individuals and businesses to balance out their greenhouse gas emissions by allocating funds to emission reduction programs. We quantify our carbon usage and then purchase carbon credits from various projects to offset our impact. We believe investing in the renewable energy industry will help our economies transition from a fossil fuel-dependant society to a cleaner, renewable energy future.

The main sources of carbon emission from our trips (transport, accommodation and waste) are also assessed and offset into renewable energy projects. Each expedition voyage offers an authentic, sustainable and carbon offset experience.

## WHICH CARBON OFFSETTING PROJECTS DO WE SUPPORT?

We work hard to reduce carbon emissions and seek less carbon-intensive alternatives where possible, and then balance the remaining emissions by purchasing certified carbon credits from internationally verified carbon reduction projects.

We have identified the following six key Gold Standard international projects to purchase carbon credits from:



**Solar Farm Project**  
(Bambous, Mauritius)

This project supports technology transfer, energy transition and the first ever solar farm in Mauritius. The project has created 20 local jobs and saved 220,000 tonnes of CO2 entering the atmosphere.



**Rainforest Rehab**  
(Malaysian Borneo)

This project works to replant trees and avoid deforestation of the natural jungle and prevent palm oil plantations being planted. This all contributes to helping sustain the local wildlife.



**Winds of Change**  
(Tamil Nadu, India)

This project runs 84 wind turbines that have been installed on areas of land sold to the project by a collective of farmers.



**Lungs of the Planet**  
(Madre De Dios, Peru)

This project conserves the forest area and prevents illegal logging in Madre De Dios, Peru. It also supports the long-term wellbeing of rural communities dependent on subsistence.



**Landscape Livelihoods**  
(Malawi, East Africa)

This project empowers over 220,000 local villages to reduce deforestation and protect 170,000 hectares of forest in East Africa, by building more sustainable sources of income.



**Winds of Change**  
(Turkey)

This project consists of 20 wind power turbines installed in the country, which generate about 109.9 GWh of annual electricity for the local electricity market. It has the added benefit of creating more than 60 local jobs in the community too.



# Sailing with Confidence

## EXPLORE WITH PEACE OF MIND

The COVID-19 pandemic has prompted the need for new standards of health and safety across the polar expedition industry. To rise to this new benchmark, we are implementing a robust, tailor made COVID-19 response plan that leverages the Ocean Endeavour's best assets to ensure we operate safely and responsibly while continuing to deliver our travellers an exceptional expedition in Antarctica.

The following pages outline our shipboard and pre-departure COVID-19 mitigation plan, developed in line with standards handed down from global health authorities. As the world navigates the final stages of the management of COVID-19 and world health bodies update their recommendations, we will continue to revise these measures to reflect the best management of health, safety and hygiene – as a result, our COVID-19 policies will continue to evolve.

Please contact your booking agent to ensure you have the most up to date information.

Should you have any question or like more information in the wake of COVID-19 please contact your booking agent. We look forward to sailing to Antarctica with you and with the safety and confidence our guests have always enjoyed.

## OUR COVID-19

## Response Plan

Our plan to ensure a safe and healthy Antarctic experience covers all aspects of our operation from pre-embarkation travel to your expedition onboard the Ocean Endeavour. Spanning these, consultation from an experienced medical team in combination with industry-best practices ensures that we meet global standards for sanitisation and health risk mitigation.

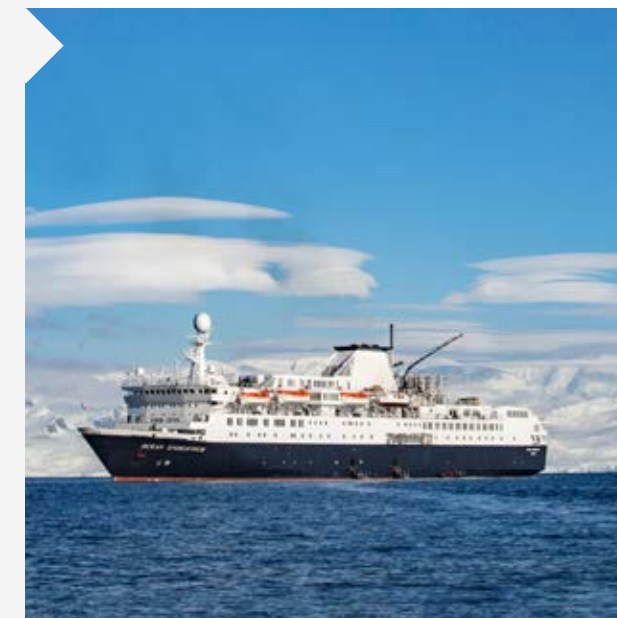
While our ship-board policies and procedures are built from decades of ship-management experience across the Cruise Management International (CMI) fleet, we are also collaborating on an International Association of Antarctic Tour Operators (IAATO) – led discourse to standardise efforts across the polar expedition cruising industry while integrating findings into our own best practices.



### A CLEAN AND HEALTHY EXPEDITION VESSEL

In line with recommendations and protocols adopted from the Cruise Lines International Association (CLIA) and the World Health Organization (WHO), upgrades to sanitation and cleanliness on board the Ocean Endeavour will meet stringent new standards, including:

- + Application of medical grade viricidal and sterilising agents to all cabins, public spaces and other high-risk areas.
- + Enhanced restaurant cleanliness with all meals served a la carte or as a staffed or touchless service.
- + Compulsory use of sanitising stations before entry to all ship common areas.
- + Regular sanitisation of all expedition equipment including zodiacs, ski poles and kayak equipment.



### HEALTHY GUESTS, GUIDES AND CREW

Core to your experience aboard the Ocean Endeavour is the knowledge of our guides and crew who cumulatively boast hundreds of Antarctic expeditions. Building upon their expertise in this field both our guides and crew will be trained in COVID-19 prevention and outbreak protocols. A key initiative of our approach to COVID-19 mitigation is to ensure that our guests, guides and crew arrive to our vessel in good health and that this is monitored and sustained throughout their voyage. This comprehensive plan encompasses:

#### 1. Pre-embarkation protocols

- + Pre-departure health and hygiene protocols as mandated by our Operations team and informed by governing health and regulatory bodies.
- + A requirement of all guests, guides and crew to produce at least one negative COVID-19 test result at time of embarkation.
- + Declarations of travel and medical history for all guests, guides and crew prior to joining the vessel.

#### 2. On-Ship protocols

- + Regular health checks for all guests, guides and crew.
- + Maintenance of social distancing and a focus on small-group expedition operations utilising the Ocean Endeavour's spacious deck plan and large fleet of zodiacs.
- + Expansion of our on-board medical team and facilities.







## WHY THE OCEAN ENDEAVOUR IS YOUR BEST CHOICE FOR A SAFE & HEALTHY POLAR EXPERIENCE

In addition to the experience of our guides and crew, the Ocean Endeavour as a vessel offers a suite of benefits that address the needs for a heightened sense of safety, health, hygiene and comfort when at sea in Antarctica. The Ocean Endeavour was chosen for our operation as a ship that offers space as well as versatility in its deck plan of multiple lounges, outdoor spaces and dining areas. Coupled with its spacious expedition facilities and dual gangways, the Ocean Endeavour ethos of space and practicality built into every aspect of our operation, gives you the peace and confidence you deserve when sailing to the White Continent.



### INCREASED FLEXIBILITY FOR SOLO TRAVELLERS

Due to increased enquiry and in line with World Health Organisation's (WHO) recommendations for social distancing protocol, we have increased our number of solo-use cabins on the Ocean Endeavour, making solo travel to Antarctica more economically viable while also bolstering our social distancing measures and maximising health as well as the experience of all guests on our vessel.

Additionally, by utilising the Ocean Endeavour's emphasis on large internal spaces and cabin versatility, we are able to offer incredible flexibility and responsiveness to cabin change requests.



### LARGE PRIMARY DINING ROOM

At approximately 200 m<sup>2</sup>, the Ocean Endeavour's main dining room is by nature an open plan and spacious on-board experience. High above the waterline and with large windows, it's a great place for a quiet dining experience with a view to the horizon. With fewer than 200 guests, this dining room offers the ability for small-group experiences and an amended service to maximise social distancing.



### SEVERAL DINING OPTIONS FOR SOCIAL DISTANCING AT MEALS

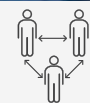
With the Ocean Endeavour's numerous dining and entertainment areas, our shipboard restaurant experience has been tailored to meet and exceed social distancing recommendations. In addition to the ship's primary restaurant, our Aurora and Meridian lounges serve as perfect secondary spaces in which to dine with family and friends while our hotel team delivers a socially distanced breakfast, lunch and three course dinner service.



### NUMEROUS PUBLIC SPACES

In addition to the Ocean Endeavour's generous dining space, the ship's lounge and other common areas complement its spacious design while providing facilities and views for on board activities as well as down-time between excursions.

While the Meridian Club, with its sweeping views and abundance of natural light, becomes a perfect area for our on-board wellness program, the Compass Club is a great spot to browse the ship's library and enjoy an espresso among the glacial views.



### HALF THE GUESTS, DOUBLE THE SPACE

Built for 400 guests, the Ocean Endeavour's relative size and emphasis on public spaces becomes particularly enjoyable in its preferred expedition environment where only 200 passengers are brought on board. This means, half the guests, double the space as well as more time with our expert guides and expedition team.



### LARGE FLEET OF ZODIACS

While the Ocean Endeavour's on-ship experience is built from the ground up for spacious design and to incorporate COVID-safe health protocols as well as a sense of solitude and unparalleled viewing, this doesn't end at the ship's gangway as we take the Antarctic sense of space off the ship and throughout our excursion operations. With a large fleet of 22 zodiacs, including two large forward-facing watercrafts, our large team of boat drivers allows small groups to hit the water and venture onto the ice in smaller congregations.

As well as a safer and healthier environment, this means more time with your expert drivers and guides, more time with just family and friends and a truer sense of genuine Antarctic adventure.



### EXPANSIVE DECK SPACE

As a true expedition vessel, the Ocean Endeavour's decks were designed to maximise viewing experience for all guests on board. Further to the vessel's bow – its primary wildlife viewing area – the ship's port and starboard bridge wings and promenade deck mean you can find a sunny and secluded iceberg viewing spot at any time of the day.



### LARGE MUDROOM AND DUEL GANGWAY FOR FAST DISEMBARKATION

As a 1B ice rated polar expedition vessel, the Ocean Endeavour's mudroom becomes an invaluable tool in conducting our efficient and socially-distanced disembarkations. When arriving in scenic Paradise Bay or at historic Port Lockroy, our team of drivers will take to the water while we call you to the mudroom in groups "Amundsen", "Shackleton", "Mawson", "Hurley" and "Scott" where your expedition jacket and boots await in your personalised ship locker.



### AN EVOLVING RESPONSE PLAN

As the world navigates the final stages of the management of COVID-19 and world health bodies update their recommendations, we will continue to revise our COVID-19 measures to reflect the best management of health, safety and hygiene. As a result, our COVID-19 policies will continue to evolve.

Please contact your booking agent to ensure you have the most up to date information.



# MEET OUR *Expedition Team*

**Giving our clients an unforgettable trip of a lifetime doesn't just happen, it takes a whole team of passionate, knowledgeable and experienced professionals!**

Our Expedition Team is part of a legacy of adventurers and explorers who have travelled to the most remote areas on Earth. Featuring a cast of extraordinary real-life explorers, including acclaimed scientists, historians, photographers and daring pioneers, our expedition staff provide leadership, engaging interpretations of our natural world and historical context for all our voyages on board the Ocean Endeavour.

Some have degrees in marine biology or political science while others have trained as park rangers, outdoor educators and medics. They are adventure guides, wildlife experts, glaciologists, environmentalists and conservationists and have worked extensively in the Polar regions.



## POLAR SAFETY

With many years of experience in the Arctic and Antarctic, our Expedition Guides are experts in the challenges of the polar wilderness. All of them are STCW certified and trained in CPR and life-saving skills, IAATO testing and standard operating procedures for expedition activities. Our team is specially trained for expedition travel to ensure your safety at all times.



## LEADING & TEACHING

Our Expedition Team represents the best of the best and will bring you closer to the wonders of the polar world.

You will have the opportunity to participate in enriching daily lectures and presentations. International experts—including biologists, penguinologists, ornithologists, glaciologists and historians—reinforce your connections to the environment at every opportunity.



## FOCUS ON DETAILS

We know that the moments you will treasure are the sum of a thousand details gone right.

So our team checks and rechecks, making sure landing sites are safe and points of interest are scouted properly.

Our team on the ground are there to make sure your arrival and departure runs as smooth as possible.





# YOUR Guides

Behind each of our Antarctica expeditions is our highly skilled Expedition Team. Bringing expert knowledge, assurance and passion aboard, they are with you every step of your unforgettable Antarctic adventure.

## DR. ALEX COWAN

**HOME BASE:** Scottish Highlands  
**YEARS OF POLAR EXPERIENCE:** 10 years  
**POSITION:** Expedition Leader

Alex has long held a fascination with the natural world and with Polar regions, studying Natural Sciences at the University of Cambridge. Alex is interested in realising the research and data collection potential of the diverse fleet of Polar tourism vessels. He spends several weeks collecting sea ice data from a nuclear-powered icebreaker, surveying the summer melt of the pack from helicopters and via direct measurements on the ice.



## LAUREN FARMER

**HOME BASE:** Scottish Highlands  
**YEARS OF POLAR EXPERIENCE:** 7 years  
**POSITION:** Assistant Expedition Leader

Lauren has extensive experience in both the Arctic and Antarctic, having guided expeditions for the past 7 years. She is a proud fellow of the Explorers Club and is Co-Founder of a non-profit, the Polar Citizen Science Collective, which works to promote scientist-led citizen science programs on board expedition vessels. She is passionate about sharing both the beauty and fragility of the polar regions, in hopes of inspiring others to champion for the protection of our precious planet.



## CHRIS LONG

**HOME BASE:** New Zealand  
**YEARS OF POLAR EXPERIENCE:** 5 years  
**POSITION:** Expedition Guide

Chris grew up as part of New Zealand's most remote family – living off the land as sustainably as possible by growing a vegetable garden, catching fish and hunting deer. Since leaving home, he has been teaching extreme Antarctic survival skills at New Zealand's Scott Base. When he is not teaching, he runs field safety around McMurdo Sound.



## TYRONE MCKENDRY

**HOME BASE:** South Africa  
**YEARS OF POLAR EXPERIENCE:** 4 years  
**POSITION:** Ornithologist Presenter & Guide

Ty is a professional ecologist with a Master in Science degree from the University of Witwatersrand. His research focused on determining the value of wildlife corridors as a strategy to conserve biodiversity in urban environments. After leaving university, Tyrone chose to pursue a career as an Expedition Lecturer on cruise ships around the world.



## DR. IAN MALCOM GODFREY

**HOME BASE:** Australia  
**POSITION:** Guest Presenter

An organic chemist, Ian worked as a teacher and lecturer between 1979 and 1987 before joining the Department of Materials Conservation in the Western Australian Museum. His research work focused on the analysis of materials excavated from historic shipwrecks and has seen him work all over the world. Ian became involved in the conservation of the historic Mawson's Huts buildings at Cape Denison and has now worked in Antarctica on 14 occasions.



## DYMPNA HAYES

**HOME BASE:** Canada  
**YEARS OF POLAR EXPERIENCE:** 4 years  
**POSITION:** Sea Kayak Guide

Dympna is the founder of multiple paddling events in Canada including "Women on Water" North America's largest women's paddling event and offers kayak courses and trips from the East to the West coast of Canada and up into the Northern territories. Her happy place is paddling along in stunning wilderness locations sharing her skills and knowledge with fellow adventurers at her side.



## DR. REBECCA WELLARD

**HOME BASE:** Australia  
**YEARS OF POLAR EXPERIENCE:** 6 years  
**POSITION:** Marine Biologist

Bec is a Marine Mammal Scientist with a focus on multiple disciplines, including bioacoustics, population ecology, cognitive behaviour and applied conservation. She completed her PhD investigating the vocal repertoire, social structure and dietary preferences of Antarctic and Australian killer whales. She is the founder and director of Project ORCA, an organisation focused on killer whale conservation and research in Australia and surrounding waters.



## DR. ANDREW JACKSON

**HOME BASE:** Hobart, Tasmania  
**YEARS OF POLAR EXPERIENCE:** 30 years  
**POSITION:** Guest Presenter

Andrew has been immersed in Antarctic affairs for 30 years, working mostly with the Australian Antarctic Program leading Antarctic law and functions. He has been to Antarctica 19 times, visiting French, Russian, New Zealand, US and Australian stations as an expedition manager. He left the Antarctic Division in 2009 and has worked since then as a private consultant on Antarctic matters.





# THE WHITE CONTINENT: *Antarctica*

What is it about Antarctica that sparks such intrigue and longing, to the point of a lifelong obsession? We believe it is the clarity of thought and purity of feeling that comes from experiencing the cleanest air and the purest natural environment on the planet. This is a place where you are at the mercy of the elements: sparkling sunshine may kiss the Peninsula one day, only to be replaced by the fury of katabatic winds the next.

It is the relinquishing of control that can make Antarctica such a profound and moving experience. Seeing wonderful sights such as icebergs, glaciers and penguins are a given, but it is the flurry of emotions attached to this wilderness which can be surprising. No one leaves Antarctica unchanged for the better!

## CHOOSING WHEN TO VISIT

Due to Antarctica's extreme nature, the window of opportunity for visiting the White Continent is fleeting. Antarctic summer lies between November and March, with each month offering something different to make your visit even more memorable.

### NOVEMBER TO DECEMBER (EARLY SUMMER)

This is the very beginning of the season in Antarctica and the Peninsula is blanketed in pristine white snow, ready to welcome its first visitors. Take advantage of this snow cover for snowshoeing opportunities. Penguin rookeries are abuzz as these creatures build their nests and perform their curious courtship routines, while seals tussle in South Georgia to establish their positions. Dramatic sea ice formations make for fantastic photo opportunities and you can expect some stunning sunsets.

### DECEMBER TO MID-FEBRUARY (SUMMER)

Days stretch to 22 hours and temperatures hit a balmy eight degrees. Antarctic summer has arrived, thawing sea ice and providing a warmer reception for the penguin chicks who are making their first appearance in this icy world. Humpback whales swim a happy return and Leopard seals are on the prowl. December and January are the busiest months in terms of tourist numbers due to the Christmas holiday period so early booking is essential.

### MID-FEBRUARY TO MARCH (LATE SUMMER)

As ice packs continue to recede, it is possible to explore more extensively – reaching areas usually blocked by sea ice. Days become shorter resulting in intense bursts of colour and light. This is prime whale watching time with Humpbacks, Minke, Southern Right and Sperm whales patrolling the surrounding waters. South Georgia in March is when the penguin rookeries are at their most bustling. The temperature starts to fall again this time of year, signalling the close of the season.





# OUR Expeditions

Has it been a lifelong dream of yours to witness magnificent icebergs, glittering glaciers and the abundant wildlife of Antarctica? This might be your chance. Our fantastic range of incredible itineraries, each uncovering a different facet of Antarctica, take in the majesty of the polar region. This map helps to get you started on creating your own polar adventure to the 7th Continent.

## BEST OF ANTARCTICA / ANTARCTIC WHALE JOURNEY / CHRISTMAS OR NEW YEAR IN ANTARCTICA

This itinerary is perfect for all travellers who want to set foot on mainland Antarctica, feel the fresh cold on your cheeks while sailing through narrow channels and explore some of Antarctica's most beautiful spots. The Antarctic Peninsula is home to the greatest collection of Antarctic wildlife and a veritable menagerie of penguins, seals and whales will welcome you to the White Continent.

## ANTARCTIC SOLAR ECLIPSE

On 4th of December 2021, a Total Solar Eclipse will occur in the Scotia Sea around the South Orkney Islands, near the Antarctic Peninsula. That day marks only the second time that humans have had the opportunity to view a Total Solar Eclipse from Antarctica. This phenomenon won't occur here again for another 400-or-so years. Seize this rare chance and join us for this special occasion on this 14-day voyage, an opportunity that arises only once in several lifetimes.

## JOURNEY TO THE ANTARCTIC CIRCLE

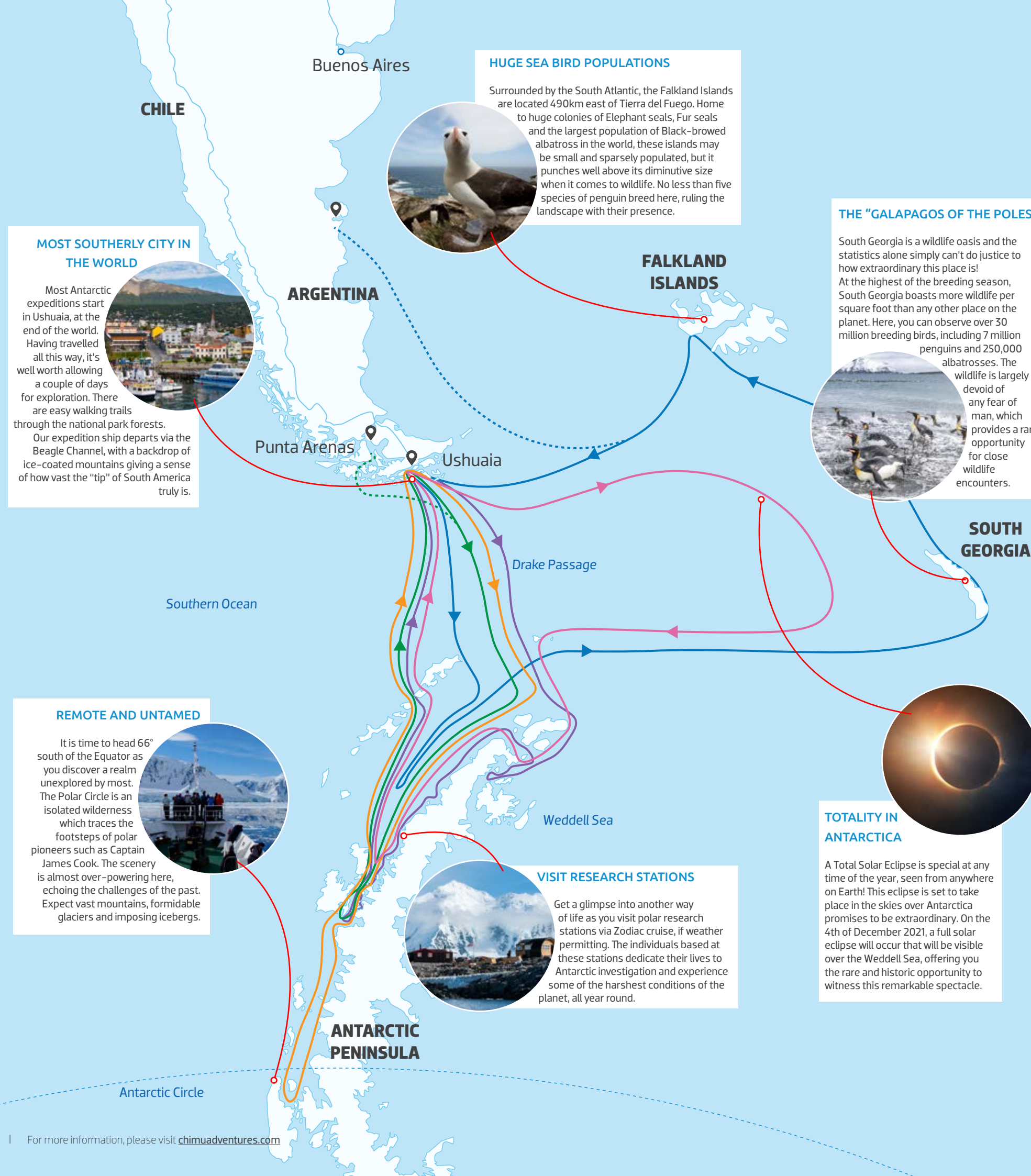
For the ultimate adventure and bragging rights, join this 14-day expedition crossing the Antarctic Circle at 66 degrees south while visiting some of the most beautiful landmarks, both north and south of the Antarctic Circle. Setting sail aboard the well-appointed Ocean Endeavour, we leave Ushuaia and civilisation behind and head towards the hauntingly beautiful icy wilderness of Antarctica. The scenery is nothing but dramatic as we sail amongst immense ice carvings, majestic mountains shrouded in snow, calving glaciers and through ice-choked waterways.

## ANTARCTICA, FALKLANDS & SOUTH GEORGIA

This epic 21-day adventure takes you across the depths of the Drake Passage to the awe-inspiring Antarctic Peninsula, South Georgia and the Falkland Islands. Celebrate Christmas and the new year on the Great White Continent, retracing the path forged by Ernest Shackleton. Explore areas known for their plentiful wildlife with an expert expedition team, seeking out penguin rookeries, scouting for seals along the coast and heading out by zodiac in search of Minke whales, Orcas and more.

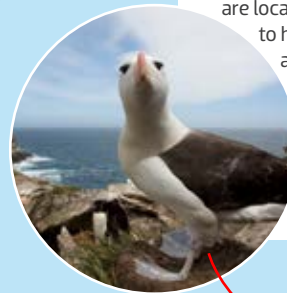
## UNCHARTERED ANTARCTICA - EAST & WEST PENINSULA

For travellers wanting to discover what it means to be a true Antarctic explorer is this 14-day expedition to the rugged and remote western side of the Antarctic Peninsula the ultimate expedition. This voyage gives you the best of both worlds; the explorer-history and vast wilderness of the east, and the popular sights of the west. After visiting the Weddell Sea, we sail through the Antarctic Sound – possible to navigate only a few times per year – and witness large tabular icebergs and a striking scenery.



### HUGE SEA BIRD POPULATIONS

Surrounded by the South Atlantic, the Falkland Islands are located 490km east of Tierra del Fuego. Home to huge colonies of Elephant seals, Fur seals and the largest population of Black-browed albatross in the world, these islands may be small and sparsely populated, but it punches well above its diminutive size when it comes to wildlife. No less than five species of penguin breed here, ruling the landscape with their presence.



### THE "GALAPAGOS OF THE POLES"

South Georgia is a wildlife oasis and the statistics alone simply can't do justice to how extraordinary this place is! At the highest of the breeding season, South Georgia boasts more wildlife per square foot than any other place on the planet. Here, you can observe over 30 million breeding birds, including 7 million penguins and 250,000 albatrosses. The wildlife is largely devoid of any fear of man, which provides a rare opportunity for close wildlife encounters.



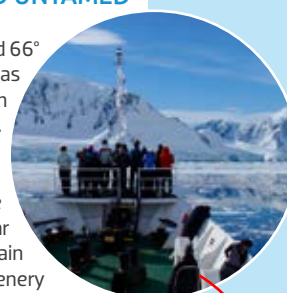
### MOST SOUTHERLY CITY IN THE WORLD

Most Antarctic expeditions start in Ushuaia, at the end of the world. Having travelled all this way, it's well worth allowing a couple of days for exploration. There are easy walking trails through the national park forests. Our expedition ship departs via the Beagle Channel, with a backdrop of ice-coated mountains giving a sense of how vast the "tip" of South America truly is.



### REMOTE AND UNTAMED

It is time to head 66° south of the Equator as you discover a realm unexplored by most. The Polar Circle is an isolated wilderness which traces the footsteps of polar pioneers such as Captain James Cook. The scenery is almost overpowering here, echoing the challenges of the past. Expect vast mountains, formidable glaciers and imposing icebergs.



### VISIT RESEARCH STATIONS

Get a glimpse into another way of life as you visit polar research stations via Zodiac cruise, if weather permitting. The individuals based at these stations dedicate their lives to Antarctic investigation and experience some of the harshest conditions of the planet, all year round.



### TOTALITY IN ANTARCTICA

A Total Solar Eclipse is special at any time of the year, seen from anywhere on Earth! This eclipse is set to take place in the skies over Antarctica promises to be extraordinary. On the 4th of December 2021, a full solar eclipse will occur that will be visible over the Weddell Sea, offering you the rare and historic opportunity to witness this remarkable spectacle.







# BEST OF ANTARCTICA: THE 7TH CONTINENT

11/12 Days | Ushuaia/Punta Arenas to Ushuaia  
Trip Code: ACACDA11/ ACTOEDPA/ ACACDP

This unforgettable journey is perfect for travellers visiting Antarctica for the first time. This adventure reveals the quintessence of Antarctica with its iconic wildlife and scenery: icebergs in all shape and sizes, thousands of penguins, narrow waterways surrounded by majestic peaks rising out of the sea and scientific research stations. Experience all the wonders Antarctica has to offer through shore visits, zodiac cruises and on foot. The White Continent has been inspiring explorer for centuries – and now you are one of them.

### HIGHLIGHTS:

- + Unspoiled and uninhabited wildernesses where penguins, seals, whales and seabirds reign supreme.
- + Encounter an incredible variety of wildlife: from Humpback whales, Leopard seals, Blue-eyed shag, to Gentoo and Chinstrap penguins.
- + Icebergs, glaciers, mountains and landscapes beyond comparison provide fantastic opportunities for photography and adventure.
- + Human endeavour of the past and present at historical sites and modern research bases.
- + Immerse yourself in the icy realm of the Antarctic, with an optional kayaking or snowshoeing excursion.

### INCLUDED ADVENTURE OPTIONS:



### PAID ADVENTURE OPTIONS:



### DATES:

Nov 2 – Nov 12, 2021 / Nov 2 – Nov 13, 2022\*  
From Punta Arenas to Ushuaia  
\* 12 days/ 11 nights  
Nov 11 – Nov 21, 2021 / Nov 20 – Nov 30, 2021 / Dec 11 – Dec 21, 2021  
Feb 07 – Feb 17, 2022 / Nov 12 – Nov 22, 2022 / Nov 21 – Dec 1, 2022  
Dec 12 – Dec 22, 2022 / Jan 2 – Jan 12, 2023 / Jan 11 – Jan 21, 2023  
From Ushuaia to Ushuaia

### INCLUSIONS:

All voyage activities and excursions (except those listed as optional), education program and meals. Expedition parka and boots on loan for the duration of your voyage, inner insulated jacket yours to keep. For details of any included transfers, please ask your booking agent.



02



03

01 Chinstrap penguins on rock  
02 Kayaking in Antarctica  
03 View of Brown Station (Argentinian Base)  
04 Leopard seal resting on ice floe



04

For more information, please visit [chimoadventures.com](http://chimoadventures.com)





## CHRISTMAS IN ANTARCTICA: A FESTIVE SEASON ADVENTURE

11 Days/ 10 Nights | Ushuaia to Ushuaia (Trip Code: ACACCIA)

01  
01 Kayaking through Antarctica

Join us for the ultimate 'White Christmas' on a memorable voyage to the Antarctic Peninsula. Towering glaciers, amazing wildlife encounters, snow-covered landscapes, colossal icebergs and the option to choose your favourite activities each day make this voyage the perfect way to spend the holiday season.

With 24 hours of daylight, we pack in continental landings, visits to historic sites and scientific stations, and perhaps an after-dinner zodiac cruise.

### HIGHLIGHTS:

- + Journey to Antarctica for the ultimate White Christmas.
- + The festive season is one of the most active times for wildlife and there are plenty of opportunities to see penguins, seals and whales under the midnight sun with our expert polar team leading the way.
- + Visits to historic sites and science stations.
- + After a day of exploration, relax in the ship's heated saltwater pool, sauna or book into the health spa on board.



### INCLUDED ADVENTURE OPTIONS:



### PAID ADVENTURE OPTIONS:



### DATES:

Dec 20 - Dec 30, 2021

### INCLUSIONS:

All voyage activities and excursions (except those listed as optional), education program and meals. Expedition parka and boots on loan for the duration of your voyage, inner insulated jacket yours to keep. For details of any included transfers, please ask your booking agent.



## NEW YEAR IN ANTARCTICA: SOUTHERN EXPEDITION

11 Days/ 10 Nights | Ushuaia to Ushuaia (Trip Code: ACACNYA)

01

Experience a New Year's celebration like no other on this 11-day adventure of the Antarctic Peninsula. With land excursions, adventurous optional activities and an ongoing lecture program delivered by polar experts, this Antarctica expedition is the most memorable way to start the year. Join us as we sail aboard the Ocean Endeavour to explore this remote yet magical region, with its seemingly endless blue-white horizons and rugged frozen scenery.

### HIGHLIGHTS:

- + Toast to the New Year in the most southerly region in the world and enjoy the included onboard celebrations.
- + Start the New Year packed with adventure: cruise via zodiac past giant icebergs, hike up Antarctica's snowy slopes or paddle the icy waters filled with penguins and seals.
- + Rejuvenate, unwind and take in the beauty and solace of Antarctica.
- + The Ocean Endeavour has excellent facilities for you to enjoy while at sea, including a spa, sauna, saltwater pool, gym and access to yoga classes.



### INCLUDED ADVENTURE OPTIONS:



### PAID ADVENTURE OPTIONS:



### DATES:

Dec 29 - Jan 8, 2022

### INCLUSIONS:

All voyage activities and excursions (except those listed as optional), education program and meals. Expedition parka and boots on loan for the duration of your voyage, inner insulated jacket yours to keep. For details of any included transfers, please ask your booking agent.



02



03

01 Toasting to the New Year  
02 Passenger enjoying the scenery  
03 Leopard seal





## SOLAR ECLIPSE: TOTALITY ON THE ANTARCTIC PENINSULA

14 Days/ 13 Nights | Ushuaia to Ushuaia (Trip Code: ACACSEV)

Witness the celestial event – the Solar Eclipse in one of the most breathtaking places – Antarctica! We have selected the best possible observation position east of South Orkney, where the sun is 11 degrees above the horizon.

This unusual trip is a once-in-a-lifetime opportunity to explore a pristine polar wilderness of singular beauty. Cruise through sea ice that shatters like glass, watch bustling penguin colonies or be rendered awestruck by the overwhelming enormity of Antarctica as the ship narrows through towering icebergs and ice-covered mountain ranges.

### HIGHLIGHTS:

- + Witness a rare total solar eclipse from the deck of Ocean Endeavour in the Scotia Sea.
- + Learn more on the significance of this event during our presentation series, led by our team of Guest Lecturers exclusively onboard for this special voyage.
- + This voyage offers more time than a traditional Peninsula voyage to explore it's rugged and remote east side including the Weddell Sea.
- + View the historic Elephant Island – a focal point of Sir Ernest Shackleton's epic Endurance saga.
- + Visit the Peninsula's western shores – abundant in penguin colonies and stunning marine life.

### INCLUDED ADVENTURE OPTIONS:



### PAID ADVENTURE OPTIONS:



### DATES:

Nov 29 – Dec 12, 2021

### INCLUSIONS:

All voyage activities and excursions (except those listed as optional), education program and meals. Expedition parka and boots on loan for the duration of your voyage, inner insulated jacket yours to keep. For details of any included transfers, please ask your booking agent.



02



03

01 Travellers standing on deck watching the sunset. 03 Solar Eclipse  
02 Fur seal resting on stone.



## JOURNEY TO THE ANTARCTIC CIRCLE: PENINSULA IN DEPTH

14 Days/ 13 Nights | Ushuaia to Ushuaia (Trip Code: ACACJTC)

Set sail and venture south to a destination few have frequented: the Antarctic Circle, latitude 66° 33'. Leaving civilisation behind, cross the infamous Drake Passage and set forth towards the mighty frozen desert of the south to begin your exploration of the Antarctic Peninsula. Take in the spectacular surroundings while navigating across the South Shetland Islands, the Antarctic Peninsula and the Antarctic Circle.

As the Ocean Endeavour weaves its way through the icy waterways, soak up the ethereal scenery – majestic snow-capped peaks, immense tabular icebergs, dramatic ice carvings and shimmering glaciers.

### HIGHLIGHTS:

- + The untamed realm of the wildest nature south of the Antarctic Circle, 66°33' South.
- + A pristine polar wilderness with nutrient-rich seas inhabited by robust populations of seabirds, whales and seals.
- + Follow in the historic footsteps of legendary polar explorers and early scientific expeditions.
- + Benefit from a variety of on-board activities including educational lectures from the expedition team on the history, geology and ecology of the area.

### INCLUDED ADVENTURE OPTIONS:



### PAID ADVENTURE OPTIONS:



### DATES:

Jan 26 – Feb 08, 2022  
Feb 25 – Mar 10, 2022

Dec 21 – Jan 03, 2023 (Christmas & New Years)  
Feb 17 – Mar 02, 2023

### INCLUSIONS:

All voyage activities and excursions (except those listed as optional), education program and meals. Expedition parka and boots on loan for the duration of your voyage, inner insulated jacket yours to keep. For details of any included transfers, please ask your booking agent.



01 On deck of the Ocean Endeavour





# UNCHARTED ANTARCTICA: EAST & WEST PENINSULA

14 Days/ 13 Nights | Ushuaia to Ushuaia (Trip Code: ACAEAD)

With its sprawling penguin colonies, magnificent ice-laden channels and rich human history, the west side of Antarctica's Peninsula is the most well-trodden part of the continent for good reason. But for the more adventurous traveller, a journey through Antarctic Sound brings one to the rugged and remote east side – a vast wilderness where leviathan tabular icebergs punctuate the horizon and an even truer sense of pristine Antarctica here. After three days of exploration, we'll celebrate our findings with a crossing the Antarctic Sound and toast to Antarctica as we head again westward to more familiar shores.

HIGHLIGHTS:

- + Traverse Antarctic Sound – a body of water that links east with west and is usually home to large tabular icebergs and startling scenery.
- + Explore the Antarctic Peninsula's remote and rugged east side with its sweeping landscapes and enormous icebergs.
- + We will seek to visit Paulet Island, the Danger Islands and the Eagle Group – chains of islands famous for their enormous penguin colonies, exploration history and geological features.
- + Visit the Peninsula's western side where Antarctica's more famous sites are found such as the Lemaire Channel, Port Lockroy and Paradise Harbour.

INCLUDED ADVENTURE OPTIONS:



PAID ADVENTURE OPTIONS:



DATES:

Nov 30 – Dec 13, 2022

INCLUSIONS:

All voyage activities and excursions (except those listed as optional), education program and meals. Expedition parka and boots on loan for the duration of your voyage, inner insulated jacket yours to keep. For details of any included transfers, please ask your booking agent.



- 01 Large tabular iceberg in Weddell Sea
- 02 Weddell Seal
- 03 Chinstrap penguins
- 04 Orcas in East Antarctica







# ANTARCTIC WHALE JOURNEY: THE SEARCH FOR THE GIANTS OF THE SEA

10 or 11 Days | Ushuaia to Ushuaia (Trip Code: ACACWJ)

It's peak whale season in the Antarctic Peninsula and this adventure takes you to the heart of the action. Set sail in search of the giants of the Southern Ocean on this voyage of discovery in the spectacular frozen continent of Antarctica. Leaving the lights of Ushuaia behind, cross the legendary Drake Passage and Antarctic convergence, scanning the waters as you sail for the silhouettes of these magnificent marine mammals as they glide alongside the vessel or surface in a spectacular breach.

## HIGHLIGHTS:

- + Follow the whale trail south to witness an incredible wildlife spectacle in Antarctica, passing through waters travelled by Humpback, Minke and Fin whales.
- + Zodiac excursions amid ice-filled bays to get closer to the magnificent, migrating mammals, all under the expert guidance of your expedition crew.
- + In addition to whale watching, experience the white Continent and encounter an incredible variety of wildlife.
- + Optional photography trips, snowshoeing and kayaking are available on this Antarctic adventure aboard the Ocean Endeavour.

## INCLUDED ADVENTURE OPTIONS:



## PAID ADVENTURE OPTIONS:



## DATES:

Feb 07 - Feb 17, 2022  
Feb 16 - Feb 26, 2022

Feb 8 - Feb 18, 2023  
Mar 1 - Mar 11, 2023

## INCLUSIONS:

All voyage activities and excursions (except those listed as optional), education program and meals. Expedition parka and boots on loan for the duration of your voyage, inner insulated jacket yours to keep. For details of any included transfers, please ask your booking agent.



02



03

01 Humpback whale fluke  
02 A pair of Gentoo penguins

03 Guests on Top Deck  
04 Humpback whale spy hopping



04

For more information, please visit [chimuaventures.com](http://chimuaventures.com)

31





# ANTARCTICA, SOUTH GEORGIA & FALKLANDS EXPLORER: WILDLIFE ADVENTURES & WONDERS

21 Days/ 20 Nights | Ushuaia to Ushuaia (Trip Code: ACACFEX)

Extend your Antarctic voyage to the wildlife-rich Falkland Islands and South Georgia. This region is teeming with wildlife – even more so than Antarctica. Breathtaking scenery and soaring cliffs greet you and hundreds of Fur seals and King penguins are on hand to welcome you in. Be amazed by the fascinating human history of the area – from the war stories of the Falklands to South Georgia's epic tales of Antarctic exploration. Learn about the whaling stations, the relics of which can still be visited.

### HIGHLIGHTS:

- + Explore the Antarctic Peninsula, the northernmost tip of the world's seventh continent, by ship, zodiac and on foot.
- + See South Georgia's incredible wildlife, including 30 breeding bird species and four penguin species.
- + Follow in the footsteps of Sir Ernest Shackleton's perilous voyages to South Georgia and pause for a moment at his grave site.
- + Learn about Antarctica's unique geology, history and wildlife with the expert team of on-board lecturers.

### INCLUDED ADVENTURE OPTIONS:



### PAID ADVENTURE OPTIONS:



### DATE:

Jan 07 – Jan 27, 2022

Jan 20 – Feb 09, 2023

### INCLUSIONS:

All voyage activities and excursions (except those listed as optional), education program and meals. Expedition parka and boots on loan for the duration of your voyage, inner insulated jacket yours to keep. For details of any included transfers, please ask your booking agent.



01 King penguins on beach  
02 Elephant seal on beach  
03 Guests enjoying a hike







# FALKLANDS, SOUTH GEORGIA & ANTARCTIC PENINSULA: ANTARCTIC ODYSSEY

01

21 Days/ 20 Nights | Ushuaia to Puerto Madryn  
(Trip Code: ACACFOD)

Wildlife enthusiasts and photographers alike cannot fail but be impressed by the incredible scenery and wildlife encounters on this epic 21-day voyage. Set sail aboard the magnificent Ocean Endeavour as we discover Antarctica, the world's last frontier and the land of penguins and icebergs. After an amazing exploration of Antarctica and the South Shetland Islands we follow in the footsteps of the heroic polar explorer, Sir Ernest Shackleton, to South Georgia, ruled by penguins and home to the greatest concentration of wildlife on earth. Explore the ruggedly beautiful Falkland Islands, with their spectacular array of birdlife, flora and fauna.

### HIGHLIGHTS:

- + Meet iconic Antarctic wildlife: King, Chinstrap, Adélie, Macaroni, Magellanic and Gentoo penguins, Leopard and Antarctic Fur seals, sea-birds and much more
- + Visit the grave of Sir Ernest Shackleton and the historic whaling stations of Grytviken and Stromness
- + Walk in the shadow of active volcanoes
- + Visit Elephant Island – staging area for the rescue of Shackleton's men from the harrowing expedition
- + Enjoy regular zodiac excursions and on-shore landings.

### INCLUDED ADVENTURE OPTIONS:



### PAID ADVENTURE OPTIONS:



### DATES:

Mar 09 – Mar 29, 2022

Mar 10 – Mar 30, 2023

### INCLUSIONS:

All voyage activities and excursions (except those listed as optional), education program and meals. Expedition parka and boots on loan for the duration of your voyage, inner insulated jacket yours to keep. For details of any included transfers, please ask your booking agent.



01 Sunset in Antarctica

02 King penguin at the beach

03 Passenger takes photo of iceberg

04 Black-browed albatross





# Activities

## ON BOARD THE OCEAN ENDEAVOUR

A small ship expedition to Antarctica is unlike any other, and an Antarctic expedition aboard the Ocean Endeavour will take you to places you never thought possible. Where else in the world can you take part in additional activities such as sea kayaking, ice camping and snowshoeing, dedicated photography workshops as well as off-ship excursions to witness Antarctica from a different perspective?

Zodiac cruising and land excursions are included with every departure and adventure activity groups are led by dedicated guides in designated zodiacs. All off-ship excursion are accompanied by expedition guides providing you with the expert knowledge and assurance of the trained Expedition team.







# ADVENTURE OPTIONS *Additional Cost*

Paddling past icebergs and through fields of sea ice on a kayak, strapping on snowshoes to reach the best icy viewpoints, capturing the perfect photo of a seal hunting its prey or camping under an Antarctic perpetual twilight – these are just some of the ways you can enrich your exploration of the great White Continent with our additional activities. Activities are subject to availability and voyage so please contact your booking agent to find out more.

Spaces are limited. We recommend booking early to avoid disappointment.



## Sea Kayaking

Under full instruction from your Sea kayaking guides, experience true tranquillity as you paddle through clinking ice floes and realise the enormity of the surrounding scenery. Look out for breaching whales, lounging seals and penguins zipping alongside your kayak. Some experience is required.



## Ice Camping

Camp out on the ice and experience the silence which blankets the continent by night. This is your chance to completely connect with this ethereal ice world – wrap up warm and embrace the Antarctic elements.



## Snowshoeing

Get a spring in your step when you slip on a pair of snowshoes in Antarctica, enabling you to easily scale gentle slopes. This unique activity allows you to access hard to reach places and seek out the most impressive views.



## Photography Program

Learn to capture wildlife and landscape shots in a small group photography program, including critiquing sessions and editing classes. Plus, Forward-Facing Zodiac excursions with a dedicated photography expert on landings.



## Forward-Facing Zodiac

Achieve the best views and photographs from a Forward-facing zodiac. They allow you to sit comfortably and securely while crackling through the ice-strewn waters. Look out for wildlife such as penguins, seals and whales as you cruise.

# ADVENTURE OPTIONS *Included*



## Land Excursions

Feel the crunch of ice under your feet and the icy whip of the Antarctic air on your cheeks during your land excursions. Our Expedition Team will set out a perimeter at each landing site within which you are free to explore at your leisure.



## Zodiac Cruising

You may not have heard of a zodiac before, but these small vessels open a huge world of opportunity as they tuck you safely into the pockets of some of Antarctica's most beautiful inlets and shorelines. Your expedition crew will help you hop in and out with ease.



## Yoga

It doesn't get more serene than complimentary yoga classes to the tune of glacial scenery. Join the most unique exercise setting in the world after a day of exploration. Classes are regular but are dependent on weather conditions and swell.



## Daily Lectures

Your inspiring Expedition team are a talented bunch of historians, biologists, geologists and conservationists. Enjoy daily lectures on fascinating Antarctic subject matter which will leave you just as passionate about this wilderness as they are.



## Briefings & Recaps

The daily recap will soon become a familiar and enjoyable aspect of your Antarctic adventure. Enjoy a drink from the bar and settle in with your fellow travellers as the expedition team summarise the day events and provide weather and schedule expectations for the next.



## Polar Plunge

This is the ultimate adrenaline rush. Once per expedition, you will have the opportunity to plunge yourself safely into the icy waters of Antarctica. Make sure you have a non-plunging friend with a camera at the ready to capture this uniquely exhilarating event.





Most travellers head to Antarctica for the once-in-a-lifetime experience of getting up close to some of the natural world's most unique and striking wildlife. Sea kayaking is one of our most popular adventure travel options, and it's no wonder. The vantage point offered as you sit just above the surface of the Southern Ocean and its many Antarctic Peninsula bays is spectacular.

With our kayak master, Brandon, you'll have the chance to paddle around the edge of glaciers and past icebergs of white, green and blue. Brandon developed an intense interest in adventure and the natural environment from an early age. Growing up in Cape Town, South Africa Brandon's passion for both water-based activities and ocean conservation came from his childhood surrounded by the sea. As an APA certified Sea Kayak Guide, he has spent the last few years fulfilling this enthusiasm in the slightly cooler waters of Antarctica, Northern Europe and the Arctic. Having studied Environmental Management, Ecotourism and Disaster Risk Management, he hopes to combine his studies with travel and share his passion for the natural world as an Antarctic kayak guide.

#### What can you expect from kayaking?

Adding kayaking to your Antarctic adventure means that you will be part of a small team that breaks off from the main group and paddles together as often as possible. You will have a different experience from your fellow travellers: while they will split their excursions between zodiac cruises and shore landings, as kayakers, you will head out for a long paddle and a shorter shore landing.

#### Do I need to be an experienced kayaker? How physically fit should I be?

The most challenging part of sea kayaking is usually getting into the kayak itself. After you have mastered that, you will learn how to keep a rhythm going through the icy water. Antarctic sea kayaking does require some previous kayaking experience as you need to be comfortable doing a wet exit. Conditions can also be unpredictable so be prepared for changes to weather and sea conditions.

The ability to do a kayak roll isn't required but you should be able to demonstrate that you're comfortable in a sea kayak. A moderate level of fitness is required as kayaking can be demanding on your arms/core and you should also have a good sense of balance.

#### How big are the groups?

Each group excursion involves up to 16 kayakers.

#### How many times will I go kayaking?

Each kayaking expedition generally runs for between two and four hours, depending on the weather. Up to four excursions throughout the expedition will be scheduled, but please be aware that kayaking is strictly subject to weather and water conditions. Safety is number one priority and the expeditions will not run if we do not deem the conditions fit enough.

#### What will I see?

Sea kayaking is a beautiful way to be close to Antarctic nature. When you kayak, you can reach down and touch the water. You can seize the ice floating past and watch penguins, seals and whales glide through the water just inches from you. Incredible scenery is guaranteed – rugged shorelines with snow-capped mountains in the background, pristine untouched shorelines, icebergs that can turn the water beneath you a brilliant blue. The quiet nature of kayaking also makes it an excellent opportunity to encounter wildlife.

#### Should photographers' kayak in Antarctica?

If you're a photographer and you want to kayak, you will need to be prepared for some compromise as it won't be possible to do both to the best of your ability. Our expedition guides will be happy to talk to you about your photography priorities so that you don't miss out on the best opportunities for photography.

#### Is sea kayaking safe?

It is important to be vigilant when you are kayaking. You are exposed to polar weather and sea conditions so dress according to the elements to avoid the risk of hypothermia. Kayaking numbers are limited to two groups of 16 so that our accompanying guides can keep track of everyone and ensure your experience is maximised. One guide stays with the group in a support kayak, while another trails nearby in a zodiac in case of emergencies which require a faster retreat back to the Ocean Endeavour. All guides are experts in kayaking and have vast experience working sea kayaking groups. They will work to scale an excursion to the skill-level of your group.

#### Do I have to bring any of my own kayaking equipment?

Kayaking equipment is provided. We have 14 to 18 different kayaks onboard, with a mix of doubles and singles. There are different sizes of dry suits and we carry around 35 dry suits. PFDs (personal flotation devices) are mandatory for safety, and we have a variety of sizes available to make sure you find one that fits. Spray kits for the cockpit of each kayak are available in different sizes.

We also provide pogies, which go over your hands to keep them warm and dry, as well as booties for your feet.

Please make sure you're dressed properly for your excursion in the open polar elements. We recommend you bring the following:

- + Thermal underwear bottom and top for underneath your dry suit
- + A fleece jacket or vest to wear over your thermal underwear
- + Gloves (preferably ski/snowboard/mountaineering gloves with some grip and a Gore-tex outside/Thinsulate inside)
- + A wind-and-waterproof breathable jacket or paddle anorak/jacket and trousers (e.g. Gore-tex)
- + A waterproof bag (if you're bringing a camera)
- + Fleece hat
- + A turtle neck or neck gaiter
- + Thick socks
- + Sunglasses
- + Sunscreen/sun block

Avoid wearing cloth clothing like t-shirts or jeans when kayaking as once wet they are hard to dry.





# POLAR *Ice Camping & Snowshoeing*

When you're visiting the great white south, there are certain experiences that can take your adventure to the next level. Stepping off a Zodiac to camp on the Antarctic Peninsula or strapping on your snowshoes to discover the overwhelming scenery is undoubtedly two of them.

## ICE CAMPING

Fall asleep amid the snow-capped mountains as you watch the colours of the Antarctic twilight bounce off the ocean and surrounding glaciers. The only locals you may be sharing your home with for the night are the Gentoo, Adelie and Chinstrap penguins who keep a low profile, nesting nearby. This is an experience like no other which

### What to expect.

If you have booked the camping excursions, after dinner has concluded, you will board a Zodiac and be guided by the expedition team to the camping site. They will stay with you overnight in case you need assistance with anything. After setting up camp, you'll spend the night onshore (about 10 hours in total) before waking up to return to the Ocean Endeavour for breakfast.

### Booking in advance.

Camping is offered on a selection of our Antarctic voyages, so we recommend booking ahead to secure your place. Camping is only available at the start of the season during November to January departures when the snow is soft.

Please note that camping numbers are limited on each voyage so we recommend booking ahead to secure your place and avoid disappointment!

### What you'll need.

Participants need to be prepared for Antarctic conditions and wear appropriate clothing when camping. This includes a hat, gloves, extra thick socks, a windproof, waterproof parka and pants. We will supply you with a bivvy bag, insulating mats and the best view ever from the portable toilet! We must bring all waste - human or otherwise - generated back to the ship for proper disposal, as per our responsibilities as stewards of this pristine environment.

## SNOWSHOEING

While you can enjoy spectacular vistas of Antarctica from the Ocean Endeavour, disembarking and setting foot on the Peninsula connects you with the breathtaking scenery of imposing mountain ranges, beautiful glaciers and soaring cliffs. Snowshoes are a lightweight, traditional mode of transport that were originally used by indigenous North Americans in polar terrain. Wide and light, they are an excellent method of crossing deep snow. Strap on your snowshoes and prepare for the ultimate Antarctic activity.

### What to expect.

If you book snowshoeing on-board for your Antarctic expedition, there may be multiple opportunities to enjoy this activity - it all depends on the weather. Each snowshoeing excursion lasts up to three hours, is designed for all abilities and is led by an expert guide.

### Fitness requirements.

No previous snowshoeing experience is required to participate but it's generally recommended that you have an average level of fitness, as you'll be walking for three hours through the snow. If you enjoy hiking trails and walking you will usually be fit enough to enjoy this activity.

### Equipment provision.

Snowshoes and ski poles are provided, and we recommend you bring and wear clothing that is suitable for the polar regions, such as thermal underwear, a breathable jacket, thick socks, sunglasses and a backpack.

### Safety and qualifications.

Our Snowshoeing excursions are guided by our expert expedition team who have years of snowshoeing experience in polar region.







# OUR PHOTOGRAPHY Program



Regardless of skill level, our small group photography program will help you take images that do justice to the incredible sights of the Antarctic. This destination is notoriously hard to photograph – the light and colours are like nowhere else in the world – so allow our experienced wildlife photographer help you master the art of working in these icy conditions, making the most of the natural light, nailing the perfect landscape shot, capturing wildlife at play and protecting your equipment from the elements.

Sam Edmonds is our onboard expert in this field. His experience and passion for Antarctica will take your photography to the next level. Read on to learn more about why he loves the White Continent, and photographing it, so much.

## Tell us a little bit about your background in photography. When did you start, what initially sparked your interest in polar photography?

After completing my studies in photojournalism, my career in photography and videography began by working on an Animal Planet production in Antarctica and the Southern Ocean for the 2013/14 Austral summer. Since then, I've spent over a year in total in the Antarctic, from the Cooperation Sea to the Peninsula, working as a camera operator, guide, photographer and operations co-ordinator. As someone who has always been interested in the environment, the Antarctic was a natural subject for my photography and has remained firmly within sight of my lens ever since my first voyage there six years ago.

## Do you have a favourite moment you wish you could have captured, but missed out on?

So many moments come to mind! Especially on the Peninsula where wildlife is so abundant, it's almost impossible to capture every moment. Perhaps my favourite though would be in the Falkland Islands. I was lucky enough to find myself in the middle of a Black-browed albatross colony and while wandering among the tussock grass, I looked up to find an albatross hovering only three feet above my head, almost completely still, facing into the wind. My camera was hanging over my shoulder, but I don't think I even considered taking a photo at the time. I just purely enjoyed the moment.

## Is there one wildlife photo you've taken that stands out for you? What's the story behind it?

In 2018, I was very humbled to win the Australian Antarctic Festival's Photograph of the Year Award. The image was of a Gentoo penguin in the snow and I think to this day, still stands out as my most iconic Antarctic photograph. Funnily enough, I took the photo on Christmas day in 2017 at Mikkelsen Harbour at the southern end of Trinity Island on the Antarctic Peninsula. We received a great amount of snow on Christmas Eve, so on the day we awoke to rafts of penguins coming ashore and waddling into a few feet of fresh powder. The entirely white scene made for a beautifully minimal background to the penguin and certainly, a nice Christmas gift for any photographer!

## What would you say is your favourite thing about being an adventure travel photographer?

Over the years, one of the reasons I realised I've grown to love working in a maritime context so thoroughly is that each day you wake up to something completely different. While you might go to bed one evening on a stormy Drake Passage with circling albatross and Cape petrels, you can easily awake the next morning to a sunny day on the Peninsula with Crabeater seals sunbathing on icebergs. As a photographer, it's such a feeling of elation to wake up every morning, look out your porthole and see what the day ahead holds.

## How does the Antarctic photography program work exactly?

Our unique photography program onboard the Ocean Endeavour is an extra-curricular series of workshops and excursions designed specifically for our guests who are most interested in maximising their photographic output during their voyage. Akin to a kayaking or camping adventure program, this is an optional add-on to any of our 14 voyages, no matter the itinerary.

## What makes the program so unique compared to the photography programs other Antarctic operators offer?

Our program is unique in that it is built from the ground up to help keen photographers develop their skills and find those once in a lifetime photographs that the Antarctic continent offers. Even before you join our expedition you will have access to our exclusive pre-departure communication and info packages. Once on board, you will meet our own expert photography guides, divide up into intimate groups of ten and learn from some of the world's best Antarctic photographers. Our program is unique in its ability to harness skill levels of all kinds and maximise photography opportunities across the duration of any voyage, utilizing our innovative forward facing small boats and a 1:10 guide to guest ratio.

## Are there any photography skills I need to know before starting the trip?

While it is best to come to the program with a basic understanding of photography, our education programming has been designed to cater for all levels of ability. Whether you're an iPhone photographer or a seasoned professional, our high guide to guest ratio and designated photography lecture and workshop space will see that every photographer's expectations are met by our team of experts. This is further enhanced by our pre-departure information packages and communication with our head photography guide who is available to answer questions and provide advice about equipment, what to expect and how to make the most of your time in the Antarctic.

## Who are the coaches/photography guides?

Our photography guides have spent their careers honing their ability in the harsh climes of the Antarctic continent. As experienced guides and mariners, along with their expertise in photography and videography, they are true specialists in this realm and their time and efforts capturing the Antarctic has been met with a spectrum of awards and accolades.

From a diverse array of nations, your guides have been hand selected for their ability to not only see and communicate the best photographic opportunities that the Antarctic has to offer, but to share their skill, knowledge and stories through formal presentations and workshops.

## How big are the photography classes?

With an incredibly impressive guide to guest ratio of 1:10, our Photography program utilises two forward-facing zodiacs. This facilitates unobstructed views of all the wildlife and scenery the Antarctic has to offer and means the program is capped at just twenty attendees. Coupled with the generous lecturing spaces aboard the Ocean Endeavour, we offer a personalized experience where guests will have the ability to learn from their photography guides at a manner tailored to their needs.

## What kind of camera should I bring?

We encourage guests of the photography program to bring whichever camera they are most comfortable with. Whether it's an iPhone or a DSLR, the curriculum is designed to meet the needs and skill levels of all photographers and deliver content that is applicable across all camera types and manufacturers. In addition to cameras and lenses, we highly recommend that attendees bring along their preferred devices and software for processing and editing photos. This will allow them to gain the absolute most from the on-board component of the program including lectures and workshops.

## What will I learn before, during and after the workshops?

While Antarctica is undoubtedly one of the most photogenic continents on Earth, it can also be one of the most challenging. Prior to your departure, our head photography guide will provide a wealth of information detailing how best to prepare for your time photographing in the Antarctic and what to expect during the voyage. Throughout the itinerary, your photography guides will provide in-the-field tips and technical info to execute once-in-a-lifetime images from zodiacs and on land while shipboard programming from lectures to workshops will instruct attendees in photo processing, editing, storage and further technical and conceptual topics. Relying on the experience of our photography guides and guest speakers, attendees of the photography program will have the unique opportunity to gain an insight into the knowledge and lives of true Antarctic and wildlife imaging professionals.





# OUR PHOTOGRAPHY *Guides*



With years of Antarctic experience between them and an array of awards to speak to their achievements, our photography guides have been handpicked as the best from their field. Both on and off the ship, our guides will be by your side to make sure you have the knowledge, the skill and the eye to see and capture those once-in-a-lifetime photographs that the Antarctic affords.



**JASON  
RANSOM** |  [jasonransomphoto](#)  
 [jasonransom.com](#)

Jason began working as a naturalist guide after falling in love with the the Canadian Arctic in 2016. Hailing from London, Ontario, Jason now splits his time between northern Canada, Antarctica and other guiding/photography assignments around the globe. Prior to becoming a guide, Jason's photography career had him traveling the world. Most notably, he served as the chief photographer to the Canadian Prime Minister, a photographer for Canada's Olympic Team and as a photojournalist covering domestic and international news events in countless countries. His award-winning images have been published in numerous newspapers and magazines.



**KIM  
NESBITT** |  [nesbittphotography](#)  
 [kimnesbittphoto.com](#)



From traveling the world working on scientific endeavors, Kim always carried a camera to the beautiful places she found herself, not knowing it would eventually turn into a lifelong passion and career. Her images have been featured on National Geographic online as well as multiple outdoor companies' web and print material. Kim knows the power of images that can bring the beauty of the natural world to home, and looks to use these images to inspire awe and conservation. She has worked on marine biology and underwater education videos, temperate rainforest conservation images, and climate change stories as it impacts watersports and paragliders.



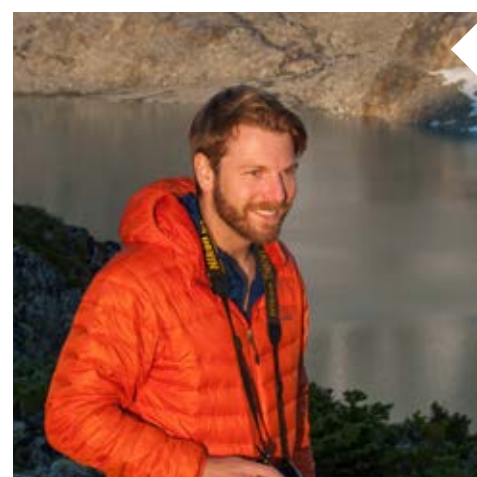
**CURTIS  
JONES** |  [cjonesphoto](#)  
 [curtisjonesphoto.com](#)

It takes a certain personality to appreciate the details of a climate rarely inhabited by people. Curtis has spent most of his career saturating himself in the polar regions of the planet, dividing his residency between Newfoundland and Nunavut, Canada. Over the last decade, his adventurous lifestyle has taken him across the Gobi Desert by kite buggy, on a 2300 km unsupported traverse of the Greenland Ice Cap, Antarctica, and a lifetime of climbing and exploration worldwide. His work has been seen in National Geographic Explorer, Canadian Geographic, The Globe and Mail, Huffington Post and more.



**SIMON  
AGER** |  [simonagerphotography](#)  
 [simonagerphotography.com](#)

Simons' career spanning 18 years as a TV graphic artist creating opening titles for such shows as BBC's "Wildlife on One", news camera and as an award winning Visual FX artist for film and television. A passion for nature and what lies beneath the waves, it was a natural progression to step into the realm of ocean conservation from armchair warrior. The last ten years have seen him on some twenty four marine based campaigns with Sea Shepherd Conservation Society as an Officer, Ships Manager and primarily as a Stills Photographer, with images appearing in The NY Times, National Geographic NZ, Oceanographic, Le Point Magazine, Laika and Bill-a-Bong stores.



**YURI  
CHOUFOUR** |  [yurichoufour](#)  
 [yurichoufour.com](#)



Yuri Choufour is a Canadian nature and expedition photographer, who's been fascinated with the natural world since early childhood. After obtaining a diploma in professional photography, and an award for photojournalism, he completed an internship with the Calgary Herald. In 2010 he sought out assisting opportunities with Art Wolfe Inc. and found world travel and teaching photography to be some of his true callings. Choufour is motivated to continually visit the far corners of the world, and through his work, share the diverse natural beauty of what we stand to lose.



**TAYLOR  
SIMPKINS**

Taylor's work as a marine biologist and underwater photographer has brought her to remote regions of the Pacific, Indian, and Southern Ocean to document global change to marine ecosystems. Her current research, at the University of Western Australia, focuses on using coral skeletons from tropical seas and deep-sea reefs (including those from the Southern Ocean) to reconstruct the conditions of our oceans hundreds to thousands of years ago. Taylor's most recent photo story on mass coral bleaching over the past 4 years has been featured in Australian Geographic and has been successfully used to improve protection and monitoring of the Great Barrier Reef by UNESCO and the Queensland government.



**BRUNO  
CAZARINI** |  [brunocazariniphotography](#)  
 [brunocazarini.com](#)

Born in Campinas, Southeast of Brazil, from a very young age Bruno was introduced to the endangered Atlantic rain forest and developed a strong sense of respect for the beauty of nature but also its fragility. It's from these roots and this appreciation of the natural world that Bruno found himself traveling around the globe working on a number of vessels and ultimately finding his real passion of photography. His photographs have been recognized by numerous awards as he continues his focus on conservation, wildlife and nature through visual documentation.



# THE OCEAN ENDEAVOUR: COMFORT & ADVENTURE

The Ocean Endeavour allows you to explore Antarctica while enjoying the class and comfort of a four-star hotel. Featuring one Expedition Team member for every eight travellers, you can take full advantage of one of the best staff-to-passenger ratios in Antarctica, with a greater level of personal service and more time with our onboard experts.

Complete with contemporary interiors, lounges for learning and reflection, zodiacs for remote exploration, breath taking 360° views from the deck, an emphasis on sustainability and exciting activities, the Ocean Endeavour is ideally suited for polar expeditions.





# THE OCEAN ENDEAVOUR - THE PERFECT EXPEDITION VESSEL

- + Travellers will enjoy one of the best expedition staff to passenger ratio (1:8) in Antarctica.
  - + A wide range of solo use cabins available as well as willing to share options for single travellers.
  - + Our strict sustainable travel policy means these expeditions are carbon offset, all seafood is sustainably sourced and we aim to avoid single-use plastic on board.
  - + A large fleet of zodiacs enables all guests to be off the ship at one time. There are also two gangways on each side of the vessel for fast disembarkation.
  - + Forward-facing zodiacs are available for the Photography Program. These Zodiacs are designed for comfort and uninterrupted views.
- + Travellers can enjoy a wide range of educational lectures from our expert expedition team on the history, ecology and geology of the area.
  - + A variety of health and wellness activities are available on board, including a sauna, saltwater swimming pool, spa and gym.
  - + A wide range of optional outdoor activities are on offer, including Snowshoeing, Ice camping, Photography program and Sea kayaking.
  - + Enjoy Chef-prepared meals.
  - + One-night hotel accommodation in Ushuaia (or Punta Arenas) is included at the start of your trip.
  - + Extensive amenities including a restaurant, polar boutique, expedition lounges, bar, a day spa, sun deck and library.

## WHY YOU WILL LOVE THE OCEAN ENDEAVOUR:

We think the Ocean Endeavour is the ultimate expedition cruising ship. Strong, stable and with plenty of creature comforts, you will feel at home. A huge range of activities both on and off the ship make her versatile and appealing to clients of all ages and budgets. Not to mention the large zodiac fleet, boarding on both sides of the vessel, and access to the unique Forward-facing zodiac seating.



## TECHNICAL SPECIFICATIONS

**Name of Vessel:** M/V Ocean Endeavor  
**Type of Vessel:** Ice-strengthened expedition vessel

### MAIN DIMENSIONS

**Built:** Poland 1982  
**Ice Class:** 1B  
**Length:** 137m (332ft)  
**Breadth:** 21m (36ft)  
**Max Draft:** 5.6m (18ft)  
**Cruising Speed:** 15 knots  
**Propulsion:** 4 Skoda Sulzer engines (4,355 horsepower per engine)  
**Electricity:** 220 volts/60Hz  
**Passenger Capacity:** 200 (maximum)  
**Crew:** 124

### SAFETY EQUIPMENT

**Lifeboats:** 6  
**Life rafts:** 8

### SAFETY FEATURES

The Ocean Endeavour carries six fully enclosed lifeboats and eight life rafts. The capacity for which exceeds SOLAS requirements, with at least 25% more space than the number of guests and crew on board. It also has an ice-strengthened hull.

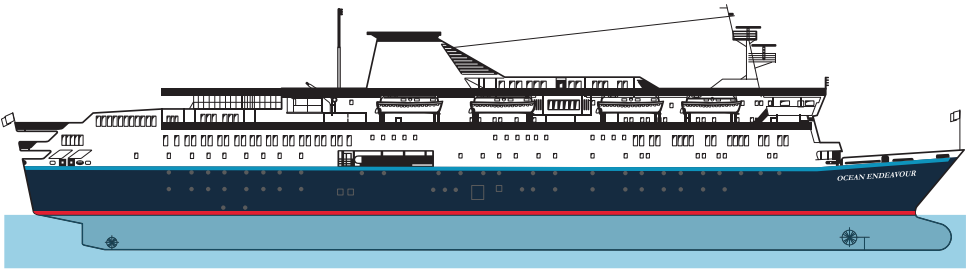
### AMENITIES

- + Restaurant
- + Nautical lounge
- + Polar library
- + Mud room
- + Gym
- + Swimming pool
- + Saunas
- + Spa facilities
- + Lecture theatre
- + Polar boutique
- + Sun deck and plenty of deck space for observation
- + Elevator access (Decks 4, 5 and 6)
- + Clinic with licensed Doctor
- + Wi-Fi in certain public areas (charges apply)
- + 24-hour tea and coffee available
- + Onboard laundry service (charges apply)

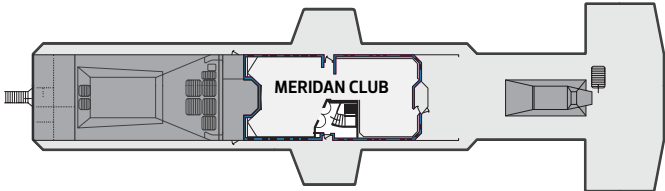
# CHOOSE YOUR CABIN

## M/V OCEAN ENDEAVOUR

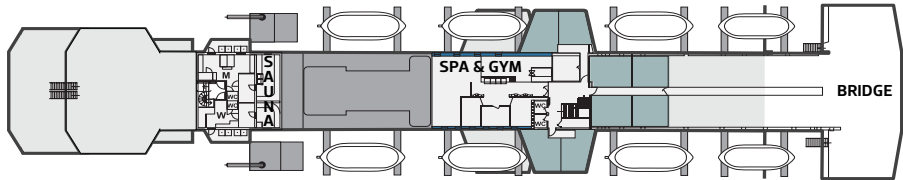
- CATEGORY 1 | Single Interior
  - CATEGORY 2 | Triple Interior
  - CATEGORY 3 | Twin Interior
  - CATEGORY 4 & 4A | Twin & Single Porthole
  - CATEGORY 5 & 5A | Twin & Single Window
- CATEGORY 6 | Comfort
  - CATEGORY 7 | Select
  - CATEGORY 8 | Superior
  - CATEGORY 9 | Junior Suite
  - CATEGORY 10 | Owner's Suite



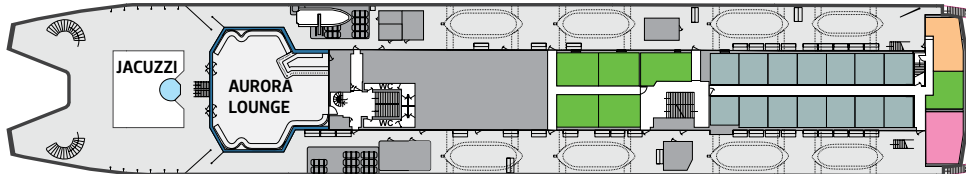
DECK 9



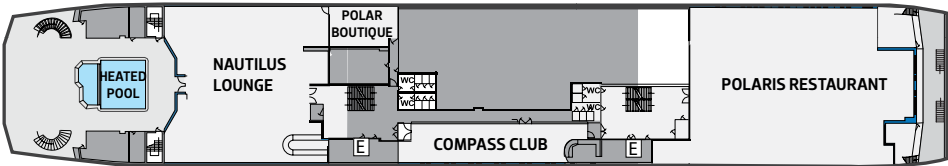
DECK 8



DECK 7



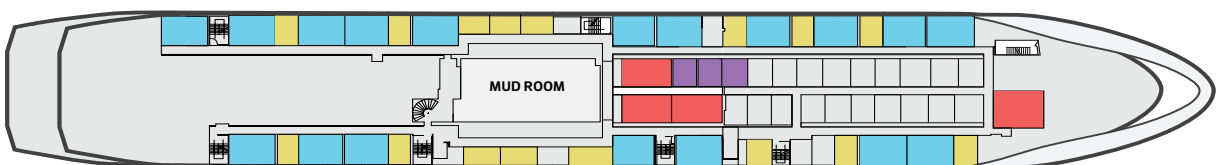
DECK 6



DECK 5



DECK 4







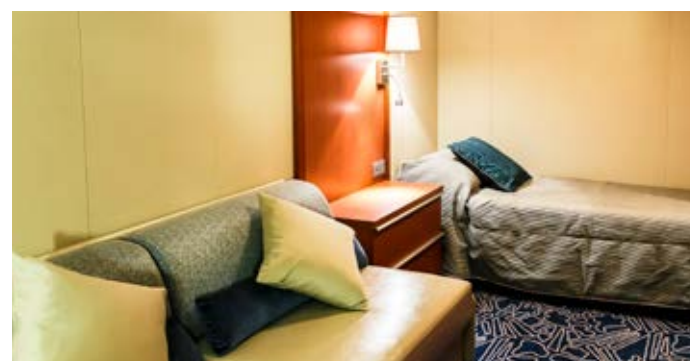
Recommended for its unrivalled sense of space, the Ocean Endeavour has plenty of open and airy communal areas that allow travellers to bask in the inimitable beauty of passing polar scenery. Housing ten different categories of cabins, the Ocean Endeavour appeals to clients of all ages and budgets.

From smaller single occupancy cabins (with no single supplement) to larger double suites, there's plenty of choice. All cabins also come with a private bathroom, a hairdryer, bathrobe(s), climate control, a TV, radio and safe.



#### ● CATEGORY 1 | SINGLE INTERIOR

- + Located on Deck 5
- + Two lower berths
- + A private bathroom
- + No porthole or window



#### ● CATEGORY 2 | TRIPLE INTERIOR

- + Located on the Deck 4
- + Three lower berths
- + One or two private bathrooms
- + No porthole or window



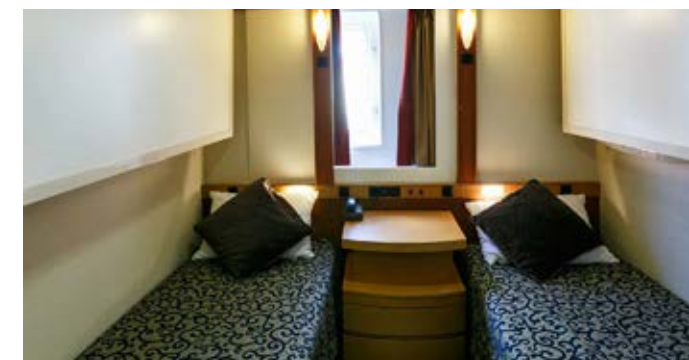
#### ● CATEGORY 3 | TWIN INTERIOR

- + Located on Deck 4
- + Two lower berths
- + A private bathroom
- + No porthole or window



#### ● CATEGORY 4/4A | TWIN & SINGLE PORTHOLE

- + Located on the Deck 4 and 5
- + One/Two lower berth
- + A private bathroom
- + One porthole, unobstructed view



#### ● CATEGORY 5/5A | TWIN & SINGLE WINDOW

- + Located on Deck 7 or 8
- + Two lower berths/twin or double beds
- + A private bathroom
- + Picture window



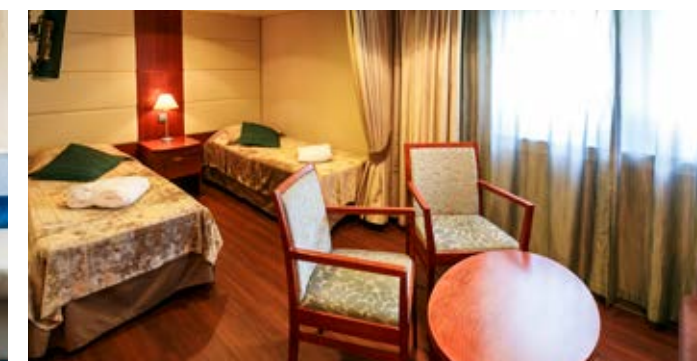
#### ● CATEGORY 6 | COMFORT

- + Located on Deck 4
- + Two lower berths
- + One or two private bathrooms
- + Separate seating area
- + Two portholes, unobstructed view



#### ● CATEGORY 7 | SELECT

- + Located on Decks 5
- + Two lower berths
- + One or two private bathrooms
- + Separate seating area
- + Large picture window



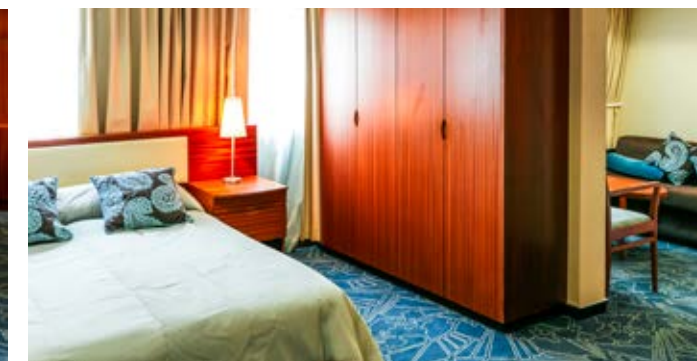
#### ● CATEGORY 8 | SUPERIOR TWIN/DOUBLE

- + Located on Decks 5 and 7
- + Two lower berths/twin or double beds
- + A private bathroom
- + Separate seating area
- + Large picture window



#### ● CATEGORY 9 | JUNIOR SUITE

- + Located on Decks 5 and 7
- + One double bed
- + A private bathroom, some have bath tubs
- + Separate seating area
- + Large picture windows



#### ● CATEGORY 10 | OWNER'S SUITE

- + Located on Deck 7
- + One double bed
- + A private bathroom with a bath tub
- + Separate seating area
- + Forward facing picture windows



# THE OCEAN ENDEAVOUR

## ONE SHIP, MANY POSSIBILITIES.



**AURORA LOUNGE**  
 Located on Deck 7, this is an intimate space for film screenings, lectures and travel talks and is also home to the bar and the Polar Boutique. Enjoy panoramic views from the large windows.



**POLAR BOUTIQUE**  
 If you forgot any essentials or need a little souvenir from your voyage, the Polar Boutique on Deck 6 in the Nautilus Lounge is our onboard gift shop.



**COMPASS CLUB**  
 Located on Deck 6 the Compass Club is home to our Polar library. A quiet space to relax, with 24-hour coffee/tea station and comfortable seating.



**MERIDIAN CLUB**  
 Located on Deck 9, this top-deck lounge offers panoramic windows and an easy access to the outdoor observation platform. It is often used for yoga and stretching classes, tabletop games, and small-group workshops.



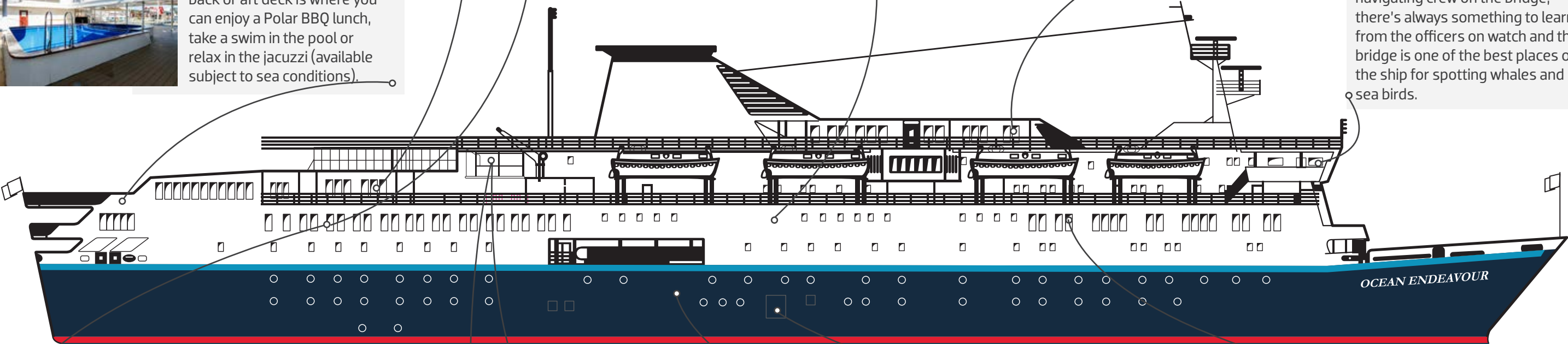
**OUTER DECKS**  
 Located in various spots all around the ship, with full circumference access on Decks 7 and 8.



**OPEN BRIDGE POLICY**  
 Guests are welcome to meet the navigating crew on the bridge; there's always something to learn from the officers on watch and the bridge is one of the best places on the ship for spotting whales and sea birds.



**POOL & JACUZZI**  
 Located on Deck 6, 7 & 8, the back or aft deck is where you can enjoy a Polar BBQ lunch, take a swim in the pool or relax in the jacuzzi (available subject to sea conditions).



**NAUTILUS LOUNGE**  
 Located on Deck 6, the Nautilus Lounge hosts lectures and travel talks with enough seating for all passengers. A great place to relax, with access to the outer deck.



**SAUNA & DAY SPA**  
 Located on Deck 8, the men's and women's saunas provide ample space to warm up with views to the icy waters of the Polar Regions.



**MUDROOM**  
 Located on Deck 4, our heated expedition preparation room has personal storage for all guests. Rubber boots and life jackets are available here and wet gear may be stored as needed.

**ZODIAC LANDING AREAS**  
 Featuring 4 loading areas (2 on each side), this allows for quick embarkation. A large fleet of 22 zodiacs enables all guests to be off the ship at one time.



**POLARIS RESTAURANT**  
 Located on Deck 6, the Polaris Restaurant is an open-seating dining room featuring large windows for you to enjoy the passing wildlife while you can indulge in our Chef-prepared meals.



**GYM**  
 Located on Deck 8, guests can enjoy a variety of health and wellness amenities such as gym and spa.



# FROM HEAD TO TOE *Expedition Essentials*

Packing is often the least popular aspect of any holiday – put packing for the Polar regions can be particularly daunting. It is one of the most extreme environments you are ever likely to find yourself in, so staying warm and dry is vital when the weather is so changeable. But don't worry, we have you covered.

## Dressing for shore landings:

A full packing list will be provided that offers detailed information on what to pack to help you prepare for your Antarctic voyage. Please ask your booking agent.



## OUR PROVIDED EXPEDITION GEAR

Staying warm and dry during your voyage is vital. Our expedition gear has been carefully selected and has all the important features to ensure maximum enjoyment on your Antarctic adventure.

You will receive a quality-manufactured Polar parka, included with every voyage you take with us. Our Expedition Jacket, meticulously designed by our expert team based on many years of experience in harsh environments, is two-fold:

- + a robust outer layer engineered to defy even the toughest polar weather conditions, provided to you on loan
- + and a lightweight insulated inner layer. Designed to be worn under your outer layer during off-ship excursions but also a great outer layer for your time on board the ship, yours to take home at the end of your journey as a reminder of your epic adventure to the White Continent!



### EXPEDITION PARKA

#### ON LOAN

A water repellent coating on the outer layer helps to move moisture away from the body, making this a breathable and light jacket. With high-vis elements, large pockets for easy accessibility and watertight seals, this is the perfect parka to keep you warm and dry on ship-to-shore zodiac excursions in all kinds of weather.



### INSULATED INNER JACKET

#### YOURS TO KEEP

Made out of 100% recycled synthetic fibers, our vegan 600 fill insulated puffer jacket will keep you warm even on the wildest days of the expedition. With a Durable Water Repellent (DWR) finish – which encourages water to bead off the fabric's surface, the jacket was produced using sustainable chemistry with minimal impact on people and the environment. A great memento to take home at the end of your voyage to remember your incredible Antarctic adventure!

### MUCK BOOTS

#### ON LOAN

We will provide black Muck rubber boots for the entire duration of the voyage. They are specifically engineered to deliver grip and performance on snow and ice while keeping your feet warm and dry.



More information about all expedition gear including sizing options, as well as a full packing list will be provided to you on confirmation of your Ocean Endeavour Antarctica expedition.



"IF ANTARCTICA WERE MUSIC IT WOULD BE MOZART. ART, AND IT WOULD BE MICHELANGELO. LITERATURE, AND IT WOULD BE SHAKESPEARE. AND YET IT IS SOMETHING EVEN GREATER; THE ONLY PLACE ON EARTH THAT IS STILL AS IT SHOULD BE. MAY WE NEVER TAME IT."

- ANDREW DENTON



[www.chimuadventures.com](http://www.chimuadventures.com)  
[info@chimuadventures.com](mailto:info@chimuadventures.com)



OUR TRIPS ARE

