



Chimu

# Solar Eclipse Flight



*Fly into the path  
of a Total Solar Eclipse*

04 DECEMBER 2021 - EX MELBOURNE

[chimuadventures.com](http://chimuadventures.com)



# SOLAR ECLIPSE FLIGHT

## *The only flight from Australia*

On December 4th 2021, join us on this unique, celestial experience. The only flight from Australia to fly into the path of totality of the Solar Eclipse. On this flight we will position the plane for our lucky travellers to view the powerful, natural and rare phenomenon far above cloud cover, in the comfort of a Dreamliner 787.

2021's Total Solar Eclipse will take place over the Scotia and Weddell Sea, before Antarctica, rendering viewing opportunities rare. To witness this any other way, you will have to be on the deck of an Antarctic cruise, or standing on Union Glacier. Both will be near impossible to access from Australia and in both locations, visibility will not be guaranteed due to cloud cover. Travelling on this fight you will be one of the few humans on the planet who will view the eclipse in pristine skies, from the edge of the stratosphere, at 40,000 ft.

Leaving Melbourne early in the morning, you will be accompanied by a combination of fellow Umbraphiles along with sightseers. The sightseers will take the window seats on the way out to view Antarctica only, before swapping halfway for the Eclipse and Shadow viewers to have a turn at the best seats in the house.

For travellers who wish to be guaranteed sightseeing over Antarctica, as well as experience the eclipse or the shadow, the option to purchase a row of seats is possible, thus avoiding the seat swap.

Once we reach the shores of Antarctica, we will spend a few hours flying over the Antarctic continent and Ross Sea area for the sightseers, during this time we will attempt to reduce the flying altitude to approximately 20,000 ft, to give improved viewing of the coast, mountain ranges, icebergs and research stations.

Seat swap will happen in the vicinity of McMurdo station but exact timings will be dependent on conditions on the day. From here our Eclipse travellers can start looking out the windows, as we start to climb in altitude and make our way directly to the path of totality and our planned eclipse intercept at approximately 74 degrees south. On the way, there is a good chance that you will also view the Antarctic continent, however this will be dependent on cloud cover. Our primary mission will be to climb and position in the totality zone. This time will also allow spectators to set up thier cameras and prepare for the total eclipse.

Being at high altitude offers the very best view of a solar eclipse as you will be far away from weather conditions and high above any clouds or pollution. The Sun will be low on the horizon so no need to look up to see it. The pristine conditions will bring out the contrasts between the deep metallic colours of the sky and the bright corona bursting around the visual obstruction from the Moon. Everyone on the left side of the plane will have unobstructed views of this which will last for approximately 2 minutes. Meanwhile the Moon's shadow will contrast sharply against the bright white of ice or cloud below in an ethereal spectacle that seems hard to believe, this is something no one can see from earth. Both sides of the plane will be able to witness this extraordinary sight. We dim the lights and the plane goes into stealth mode, offering the entire plane an eclipse experience.

This flight is perfect for people wishing to do something few people will ever do in their lifetime.



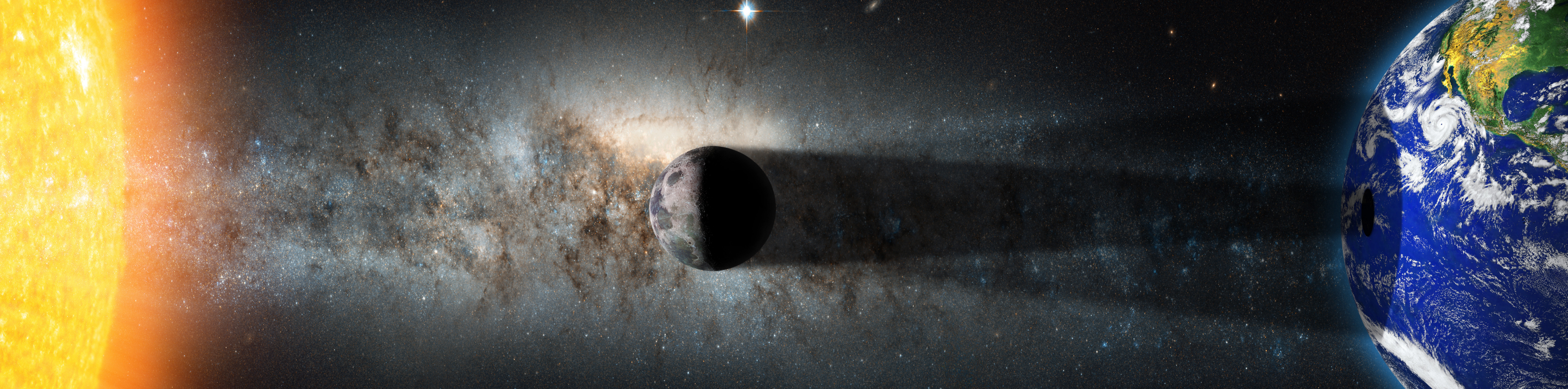
\*This map is an example. The flight route may differ due to weather conditions.

### TOUR INCLUSIONS

- > Seat options from Economy Class–Limited View to Premium Business
- > Full Bar Service including champagne, beer, spirits and soft drinks including a post–totality celebration
- > Two Full–Service Qantas meals plus snacks
- > In seat entertainment system
- > Knowledge and leadership by experienced Antarctica specialists, eclipse experts and photographers
- > Souvenir Eclipse glasses







## SPECIAL GUESTS

### *Onboard your flight*

To make this flight extra special we have the perfect Host, Astronomer and Eclipse Flight Manager, who, through expert knowledge and experience, will really bring the flight to life. You will return, not only having had one of the most remarkable experiences of your life but with a head full of knowledge and a heart full of memories.



**Adam Spencer**  
Flight Emcee

Broadcaster, mathematician, comedian and all round geek, Adam Spencer would probably be known to you as the voice of breakfast radio at both Triple J and ABC Sydney over a celebrated 15 year career.

At the heart of it all, Adam loves conversations and is the perfect host for an event like this. Expect Adam to ask our experts everything you want to know about what we will be experiencing on the trip – as well as a few silly questions to keep them on their toes!

Adam has also authored 6 best-selling books on popular mathematics and appeared on television shows as varied as ABC TV's The Drum through to FoxSports Back Page.



**Geoff Sims**  
Lead Astronomer

Geoff is an astronomer at heart, and has been photographing the night sky for over 20 years. A veteran of nine total solar eclipses, he is also a former tour guide at the historic Sydney Observatory and holds a PhD from the University of New South Wales. His academic research specialised in astronomy from Antarctica, and culminated in an expedition to the high, dry and freezing Antarctic plateau, where he travelled via the South Pole to the coldest place on Earth, Ridge A, to service a robotic telescope.

He currently works for Australian tech giant Atlassian, focussing on improving software through the use of artificial intelligence.



**Xavier M. Jubier**  
Eclipse Flight Expert

Xavier, a French engineer by training, has spent the past 30 years traveling to the remote ends of the globe to notably witness solar eclipses and astronomy events. In November 2003 he observed a unique midnight Sun Total Solar Eclipse, a first in mankind, from the icecap in Antarctica and has led multiple eclipse flights during the previous decade using private jets and even supersonic fighter jets. To support his endeavours, he has created state-of-the-art tools and interactive maps available to both amateurs and professionals. Solar Eclipse Maestro, his app dedicated to solar eclipses, is being used to plan and execute our current Antarctic eclipse flight.

## FREQUENTLY ASKED QUESTIONS

### *Solar Eclipse Flight*

#### **Where will we experience the Eclipse?**

Our plane will intercept the path of totality at around 74 degrees south. At this point, viewers on the left-hand side of the plane will witness the total solar eclipse, whilst viewers on the right-hand side will witness the elongated umbral shadow. Viewing from 40,000 ft offers cloud-free viewing in pristine skies.

#### **What will I see of Antarctica?**

You will be travelling over parts of Antarctica very few humans have ever seen before, as we track south east over the Ross Ice Shelf. The sheer expanse of the Great White Continent will be on display. However, please note views are weather dependent and to reach the Eclipse zone, which is our ultimate goal, we will need to maintain a good speed by maintaining a cruising altitude of about 40,000 ft above sea level. It is for this reason that we cannot guarantee the views you will be privy to en-route.

#### **Do I need to seat swap?**

Yes. This trip offers two very unique opportunities for people with different interests. The seat swap ensures the window views are shared amongst these different interest groups. However, for those who don't want the hassle of a seat swap and want to experience the amazing views of Antarctica, as well as witnessing the Solar Eclipse, you can purchase a row and you will remain in the same seats for the duration of the flight.

#### **How should I prepare to photograph this event?**

We recommend wide angle photography or video, as the plane will bank slightly to dip the wing and cruise on a wide arc during the path of totality, meaning travellers will witness the sun move from left to right through the field of vision out their window. Wide angle photography using high ISO and videography will offer the best capture of this event, images taken with a telephoto lens risk being blurry due to the fact that the drift rate is roughly one solar diameter per second which is about 100 times faster than the movement of our Sun and Moon in the sky.

#### **How long is the flight?**

The flight will last for 16 hours. Our Antarctica sightseers will enjoy the first leg of the journey, whilst our Eclipse viewers will enjoy the second.

#### **What will I learn on this flight?**

Whether you are fascinated in Antarctica or a passionate Umbraphile keen to see the solar phenomenon. You will be privy to lectures on both, as our Antarctica and astronomy experts get on the PA and explain everything we see outside our windows.

#### **Can I reserve a particular seat?**

This trip offers two very unique opportunities for people with different interests. Seat swap ensures the window views are shared amongst these different interest groups. However, for those who don't want the hassle of a seat swap and want to experience the amazing views of Antarctica, as well as witnessing the Solar Eclipse, you can purchase a row and you will remain in the same seats for the duration of the flight.

#### **Why do the seats need to be purchased as pairs in economy and premium economy?**

We know from experience on our scenic flights that pairs are willing to share the view from their window seat. This factor is very important on an Eclipse flight. We can't assume this same level of sharing will occur if two strangers are seated next to each other. Of course, individuals are welcome to purchase two seats for themselves.

#### **Chimu Adventures COVID-19 Vaccination policy**

Safety of everyone in our travelling community is our priority.

From 1 November 2021, all travellers over the age of 12 on all Chimu Adventures tours and itineraries will require proof of COVID-19 vaccination and time for immunity to take effect, prior to departure.

Accepted vaccinations are those recommended by the World Health Organisation – AstraZeneca, Johnson & Johnson, Moderna, Pfizer – BioNTech, Sinopharm and Sinovac.





# SEAT SWAP

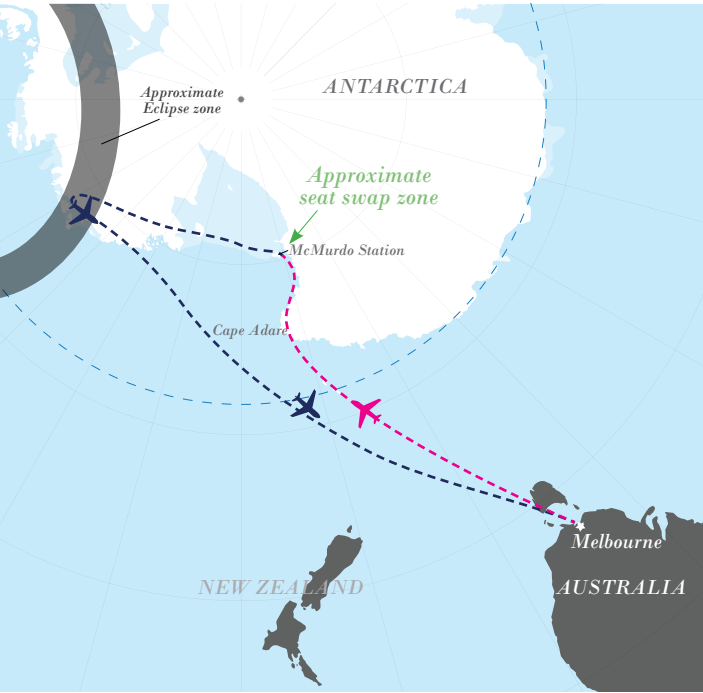
## Why, when and how

### Why do we have a seat swap?

This is a very unique flight and lends itself to people with differing interests. A seat swap allows viewing opportunities for all travellers to enjoy a window seat for the critical part of their flight. For those interested in both the solar eclipse and Antarctica there is the option to purchase a row and avoid seat swap.

### When will the seat swap happen?

We plan to conduct the seat swap after a few hours of Antarctic viewing and approximately near McMurdo station depending on the route on the day.



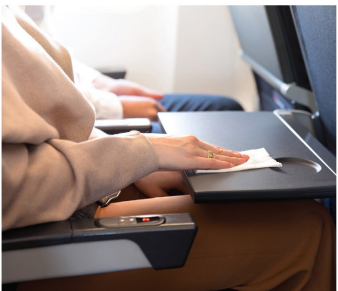
## What is the process for the seat swap?



Cabin Crew will advise you when the seat swap process will commence.

Seat swap process will occur by cabin and by row number.

Our team on board will assist in the seat swapping process.



You will be required to tidy your own seat area prior to vacating as follows:

- Collect all rubbish from the seat back pocket and within the seat area, placing in the white bag provided
- Wipe down tray table
- Wipe down seatbelt and buckle
- Wipe down IFE screen and control
- If in window seat, wipe down window



Refer to your second boarding pass for the location of your next seat.

You will need to take with you to your next seat:

- Blanket
- Pillow
- Headset
- Your personal items will remain in the original overhead locker



Crew will move through the cabin to collect rubbish once seat swap has been completed.

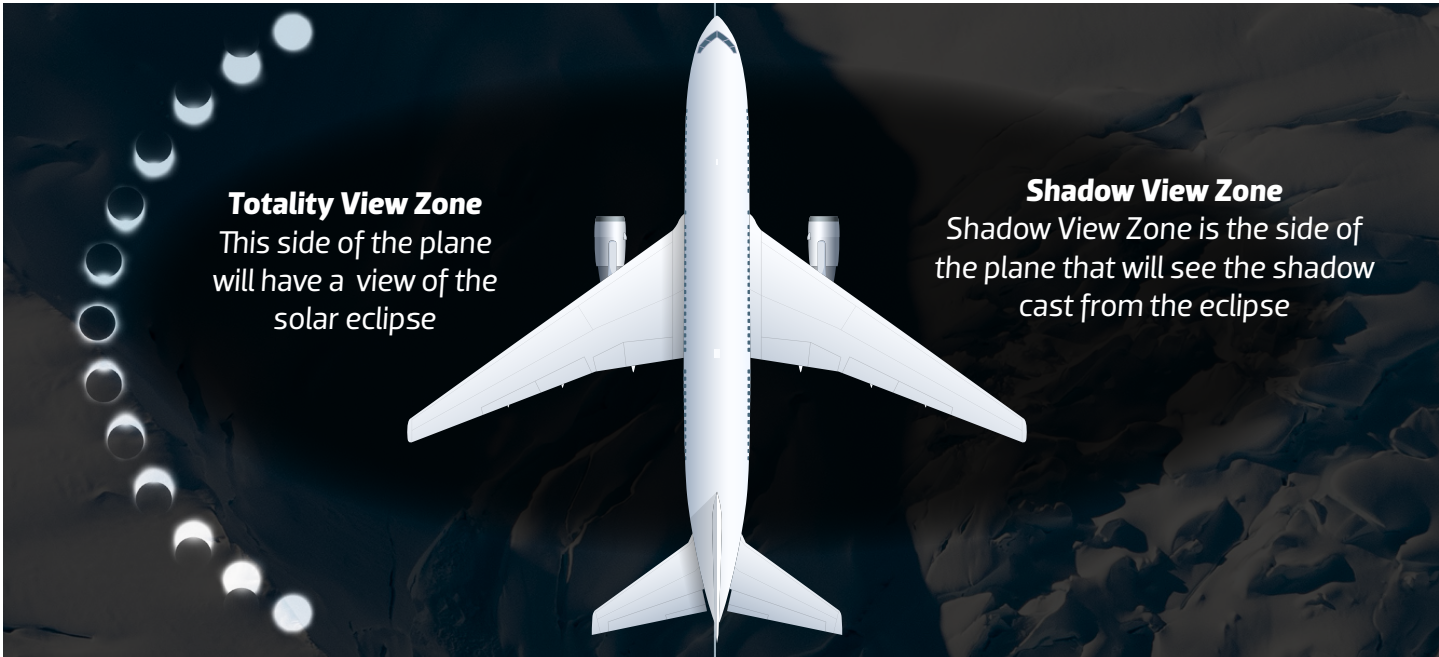
Please remember face masks are mandatory during the flight.

Wipes will be provided by crew during the flight.



# ANTARCTICA ECLIPSE FLIGHT

## Seating Structure and Pricing



### ECLIPSE TOTALITY VIEW ZONE

Sitting on the left hand side of the plane (after the seat swap) you will experience a clear window view to the total solar eclipse.

**Note:** The wing will not pose an issue for totality view as our pilots will do a shallow bank to keep it out of view.

**Must be booked in pairs in Premium Economy & Economy.**

Please see seat map on page 8 & 9 for seat swap configuration.

### ECLIPSE SHADOW VIEW ZONE

These seats are located on the right hand side of the plane (after the seat swap) which will give you a view of the shadow cast by the Moon, which is spectacular in itself.

**Must be booked in pairs in Premium Economy & Economy.**

Please see seat map on page 8 & 9 for

### ANTARCTICA FLIGHT

These seats will be the first to enjoy a sightseeing flight over Antarctica. Then after the seat swap will not have access to a window during the solar eclipse.

Please see seat map on page 8 & 9 for seat swap configuration.

## PRICING

Eclipse Viewing Zone	PREMIUM BUSINESS	BUSINESS	PREMIUM ECONOMY	ECONOMY NO WING	ECONOMY WING	ECONOMY LIMITED VIEW
Eclipse Totality Zone	\$12,995	\$11,499	\$7,499	\$5,849	N/A	N/A
Eclipse Shadow Zone	\$7,495	\$6,199	\$4,099	\$2,899	\$1,999	N/A
Antarctica Flight	\$6,595	\$5,099	\$2,999	\$2,399	\$1,549	\$999

Pricing is per seat

### BOOK A ROW OF SEATS FOR MAXIMUM VIEWING

You can purchase a row so there will be no seat swap, but these must be booked as:

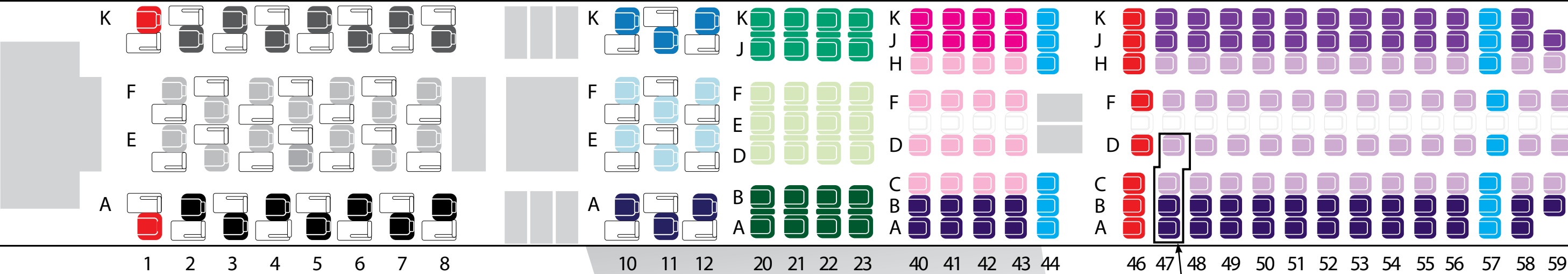
**Economy** – 4 seats in a row **Premium Economy** – 3 seats in a row **Business Class** – 2 seats in a row

Eclipse Viewing Zone	PREMIUM BUSINESS	BUSINESS	PREMIUM ECONOMY	ECONOMY NO WING	ECONOMY WING	ECONOMY LIMITED VIEW
Eclipse Totality Row	\$19,590 (2 seats)	\$16,598 (2 seats)	\$17,997 (3 seats)	\$16,496 (4 seats)	N/A	N/A
Eclipse Shadow Zone Row	\$14,090 (2 seats)	\$11,298 (2 seats)	\$14,196 (4 seats)	\$10,596 (4 seats)	N/A	N/A

# SEATING PLAN AFTER THE SEAT SWAP

This seat map shows where you will be sitting **after** the seat swap

■ Reserved □ Empty seat



Example of economy eclipse row

## PREMIUM BUSINESS CLASS ECLIPSE TOTALITY VIEW ZONE

## PREMIUM BUSINESS CLASS ECLIPSE SHADOW VIEW ZONE

## PREMIUM BUSINESS CLASS ANTARCTICA FLIGHT

Admire wide views in utmost comfort with full international business class service in a Premium Business Class seats. The windows in the Dreamliner are 65% larger than comparable aircraft windows. Travellers seated in totality view seats will not have the event obstructed by the wing. As the aircraft will be banking during the eclipse, these passengers will still have a full view of the eclipse itself.

In Premium Business Class, you will enjoy a super soft leather seat that transforms into a luxurious two-metre lie-flat bed, with a memory foam mattress, two full-size pillows and a cosy duvet. The extensive storage space, wide range of seat adjustments and in-seat massage options will suit your personal needs. And all lie-flat beds have direct aisle access. As per the below seat swap diagram the window and adjacent aisle seats will swap throughout the flight to give everyone ample time in the window seat.

Seat swap:



## BUSINESS CLASS ECLIPSE TOTALITY VIEW ZONE

## BUSINESS CLASS ECLIPSE SHADOW VIEW ZONE

## BUSINESS CLASS ANTARCTICA FLIGHT

Enjoy the same wonderful seating and service as Premium Business Class customers. The difference is, the seats are situated over the front of the wing. This does slightly obstruct views, however some photographers like the wing as it gives great perspective in images and video. These seats will undergo a swap as per the below diagram to ensure everyone gets ample time in a window seat.

Seat swap:



## PREMIUM ECONOMY CLASS ECLIPSE TOTALITY VIEW ZONE

## PREMIUM ECONOMY CLASS ECLIPSE SHADOW VIEW ZONE

## PREMIUM ECONOMY CLASS ANTARCTICA FLIGHT

Stretch out and relax in Qantas' award-winning Premium Economy cabin, with luxurious levels of space and attentive service. Seated in an intimate and private cabin, you'll enjoy the benefits of flying premium with a well thought out seat design, indulgent touches to make you feel at home, plus a refreshed menu and an extensive wine list. All while you enjoy magnificent views through large windows. As per the below diagram there will be a seat swap during the flight to give everyone the opportunity to get great views during their allocated time.

Seat swap:



## ECONOMY CLASS ECLIPSE TOTALITY VIEW ZONE

## ECONOMY CLASS ECLIPSE SHADOW VIEW ZONE

## ECONOMY CLASS NO WING ANTARCTICA FLIGHT

These seats have views which are not obstructed by the wing. Some of the eclipse view seats are over the wing but as the aircraft will be banking during the eclipse, these passengers will still have a full view of the eclipse itself. All economy customers will enjoy a full meal service for dinner & breakfast. On the Dreamliner B787's you'll enjoy the next generation and award-winning Recaro seat, ergonomically designed for optimal comfort. Everything has been thought of to support your travel needs – mood lights, storage areas, inflight entertainment and even a personal electronic device shelf. As per the below diagram there will be a seat swap during the flight to give everyone the opportunity to get better views through the large windows.



## ECONOMY CLASS WING ECLIPSE SHADOW VIEW ZONE

## ECONOMY CLASS WING ANTARCTICA FLIGHT

These economy seats are over the wing. This does obstruct views to a degree however many photographers like the wing as it gives great perspective in images and video. All economy customers will enjoy a full meal service for dinner & breakfast. As per the below diagram there will be a seat swap during the flight to give everyone the opportunity to get better views through the large windows.

Seat swap:



## ECONOMY CLASS - LIMITED VIEW

Limited View seats do not have direct access to a window. These passengers are given priority access to stand in the common areas to enjoy the view during the Antarctica viewing section of the flight. Passengers will enjoy Qantas's International service. All economy customers will enjoy a full meal service for dinner & breakfast as well as inflight entertainment. Antarctica viewing only. These seats do not rotate.



# TERMS & CONDITIONS

## Charter Manager

Chimu Adventures Pty Ltd, 65 110 269 380,  
01/308 Pacific Hwy, Crows Nest, NSW, 2065.

## Charter airline

Qantas Airways Limited has been contracted as the operating Airline. However all bookings for this flight must be made via the charter.

## Deposit and final payments

A non-refundable deposit per passenger is due at the time of booking equivalent to:

1. Economy class seats AUD\$500.00 per person
2. Premium Economy AUD\$750.00 per person
3. Business class seats AUD\$1000.00 per person

Final payment of your booking balance is required eight weeks prior to your departure date.

## Fares:

All fares and charges are per person in Australian dollars, including GST.

## Cancellation fees

Should government lockdown restrictions imposed due to COVID19 outbreaks prevent you from reaching the flight departure point or prevent the flight departing altogether, you can choose from either of the following:

1. Receive a full refund, excluding \$75 per person administration fee.
2. A 100% travel credit to use when booking other Chimu Adventures product.

## If you cancel, the following fees will apply;

1. Between confirmation and eight weeks prior to departure – full loss of deposit.
2. Between eight weeks and four weeks prior to departure – full refund less 50% cancellation fee.
3. Between four weeks and departure date – no refund

Travel insurance is strongly recommended.

## Amendment/transfer

Your ticket can be transferred to another person up to three days prior to departure. An AUD\$150 name change service fee per change will apply. This same service fee will apply for change of class.

## Travel documents

Trip information and travel documents will be forwarded to you approximately 10 days prior to travel, providing full payment has been received.

## Seat numbers

Seat number may not be confirmed in advance of the flight. They will be issued on your boarding pass at the departure airport.

**Your flight contract** is with Chimu Adventures Pty Ltd. We have made every effort to ensure that photographs, pricing and all other services will be as represented. Please note that we cannot be responsible for the act or omissions of suppliers or services, or for any representation made by suppliers or third parties. The services are subject to the conditions imposed by the suppliers and their liability may be limited by their tariffs, conditions of carriage, international conventions and agreements, or customs of their businesses. Therefore, Chimu Adventures Pty Ltd. cannot assume responsibility for any claims, losses, damage, costs, or expenses of any nature arising out of injury; accident; or death, loss of, damage to, or delay in connection with baggage or other property; delay; inconvenience; upset; disappointment; stress; frustration; or loss of employment or loss of holiday time resulting from:

1. The act or fault or omission of any party other than Chimu Adventures Pty Ltd. or its employees.
2. The passenger's failure to obtain related documentation.

The passenger will not be entitled to any refund if the passenger fails to follow the instruction of Chimu Adventures Pty Ltd or its representatives.

We reserve the right to alter or cancel any services you have purchased and inclusions may vary depending on weather, or other uncertainties, and are subject to change. The photographs appearing in this brochure are representational only and are not a guarantee that everything will be exactly as depicted at the location upon arrival. Whilst every endeavour will be made to adhere to the proposed route, weather conditions may determine the actual route, according to the absolute discretion of the Captain of the aircraft. No guarantee can be given of clear viewing conditions and no refund or part refund will be made if the views are fully or partially obscured. Alternative routes will be selected to give the best viewing if the planned route has unfavourable weather conditions.

**Viewing disclaimer:** Chimu Adventures use globally respected eclipse aviation experts alongside Qantas pilots and technical aviation teams, in order to carefully map and execute the eclipse viewing opportunity. Passengers onboard this flight accept that all best efforts are made to position the aircraft precisely. In the event of technical problems on the day, Chimu Adventures will not offer full or partial refunds should eclipse viewing not be possible. By booking on this flight travellers accept this risk.

## Governing rule

The charter proposal set out herein and the participants' acceptance by completion of the booking form creates an agreement between the

Charter Manager and the participants. The booking form forms part of this documentation.

**Special note:** An Qantas 787 aircraft will operate all flights; however, other Qantas aircraft may be substituted without notice. Frequent flyer points do not apply. Depending on prevailing weather conditions the routing and points of interest viewed may vary. Alternative flight paths may enable viewing of many spectacular points of interest but clear views cannot be guaranteed. If flight booking numbers do not reach minimum numbers then the flight may be cancelled prior to departure date and if this were to occur we'd provide a full refund but will not be responsible for any additional indirect costs. Passport identification is NOT required upon check-in. As this is classed as a domestic charter flight, a valid photo identification card such as a drivers licence is required upon check in. Photos/videos Photographs or videos of the flight may be used for promotional purposes. Agreeing to these terms online and acceptance of the documents indicates your acceptance and release for this material to be used for promotional and/or resale purposes. **Airline levy** Airline fuel and/or security levies may apply.

## Chimu Adventures COVID-19 Vaccination policy

Safety of everyone in our travelling community is our priority.

From 1 November 2021, all travellers on all Chimu Adventures tours and itineraries will require proof of COVID-19 vaccination and time for immunity to take effect, prior to departure.

Accepted vaccinations are those recommended by the World Health Organisation – *AstraZeneca, Johnson & Johnson, Moderna, Pfizer-BioNTech, Sinopharm and Sinovac.*

**Please Note:** Customers accept that the flight will be operating in a remote location. Although it is a small risk, customers also accept that the if the aircraft is redirected by aircraft control, or for any other reason, the flight may need to be redirected away from the intended flight path. This could also mean redirection away from the eclipse path of totality. Customers accept at the time of booking that this risk is part of the expeditious nature of the flight and agree that no compensation will be sought from either Chimu Adventures or Qantas should this eventuate.

Your travel agent:



Call 1300 818 634  
[www.chimuadventures.com.au](http://www.chimuadventures.com.au)