



Luxury Adventures in Antarctica



*"If Antarctica were music it would be Mozart.
Art, and it would be Michelangelo.
Literature, and it would be Shakespeare.
And yet it is something even greater;
the only place on earth that is still as it should be."*

- Andrew Denton



Ultimate ADVENTURES

Visiting the interior of Antarctica is akin to visiting another planet. Extraordinary in ethereal landscapes, the isolated, white wilderness, on the mainland of Antarctica is a destination set aside only for an exclusive few.

Through this program, discerning travellers choose their ultimate experience through an array of luxurious or adventurous experiences. From visiting an emperor penguin colony, to standing on the end of the earth at the South Pole, through to fine dining in a private camp and indulging in state-of-the-art polar accommodation.

Travelling to such a destination must be done with great care, to ensure this polar environment is respected and remains undamaged. This program has been operating carbon neutral since 2007 and links directly to some of Antarctica's most prestigious experts, who run the program with the utmost of consideration.

Ultimate Adventure Features

Travel by Private Jet	4
Whichaway Oasis	6
Emperor Colony	8
South Pole Adventure.....	10

Expeditions

The Greatest Day Ever.....	12
Early Emperors.....	14
South Pole & Emperors.....	16

Cruising IN LUXURY

Gone are the days of frigid sleeping quarters and pemmican when on a voyage to the White Continent.

Today expedition cruising, to the formidable and breathtaking Antarctic Peninsula offers travellers an array of options, including exceptional ship builds and operations that gift an elegant cruise experience, whilst still awarding the explorer within with the excitement of an expedition style adventure.

Whether butler service or private helicopter are your preferences? It is all possible on these exceptional cruises.

After a busy day of unforgettable experiences, travellers find themselves wrapped with fine dining, elegantly appointed cabins and common areas, whilst they mix with the best of the best in the business.

5 Star Cruise Ships

Commandant Charcot.....	20
Ultramarine	22
World Explorer	24

Luxury Accommodation

Extend your trip	26
------------------------	----

Travel

BY PRIVATE JET



SOUTH AFRICA – ANTARCTICA

We travel in uncompromising comfort across the mighty Southern Ocean in a Gulfstream 550. During the five-hour flight, the African night turns to the Antarctic day as we soar over thousands of icebergs on our way to one of the most remote locations on Earth.

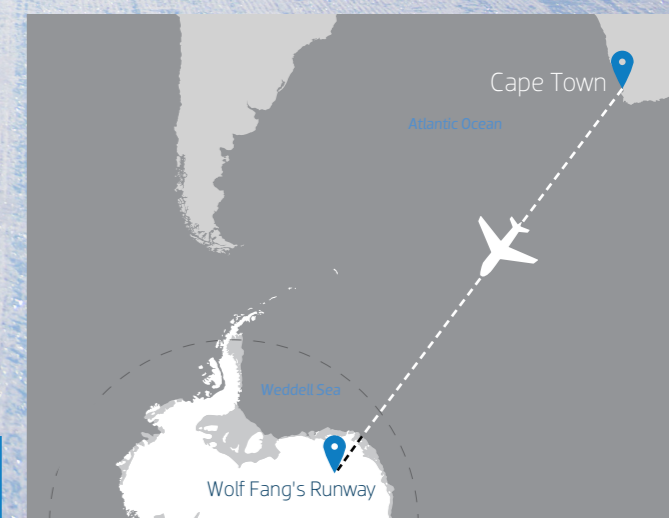
The runway is overlooked by one of the most magnificent and iconic mountains on the entire continent, named 'Wolf's Fang' by the early Norwegian explorers. After landing on the ancient blue ice, you will be surrounded by massive monoliths of rock that rise vertically from the glacier.



Investing in the future of aviation, all gulfstream jets in this program are now run on Sustainable Aviation Fuel reducing the impact by up to 80% and reducing the need to carbon offset even further.



Watch a video about Wolfs Fang Runway



WHICHAWAY *Oasis*



On the edge of the Great White Continent lies the Schirmacher Oasis, an ice-free area that contains over 100 freshwater lakes. This is the site of a unique camp - Whichaway.

Whichaway consists of a collection of hi-tech polar domes set on the shores of a frozen lake and encircled by a magnificent 60-metre (200-foot) icefall.

It is warm and comfortable, and the perfect home base for daily activities or when you want to just simply relax.

Our camp consists of six heated and state-of-the-art bedroom pods that are designed for two guests to enjoy in comfort. At just over 6m (20ft) in diameter, they are spacious with a writing desk, wash area and toilet.

[▶ Watch a video about Whichaway Oasis](#)

Emperor

PENGUIN COLONY

Your visit to the penguins begins with a 2.5 hour flight to Atka Bay, the site of the first episode of Sir David Attenborough's ground-breaking documentary Seven Worlds, One Planet. Here you'll see over 14,000 breeding pairs and their newly-hatched chicks, a spectacle full of noise and energy that is a favourite with wildlife watchers and photographers.

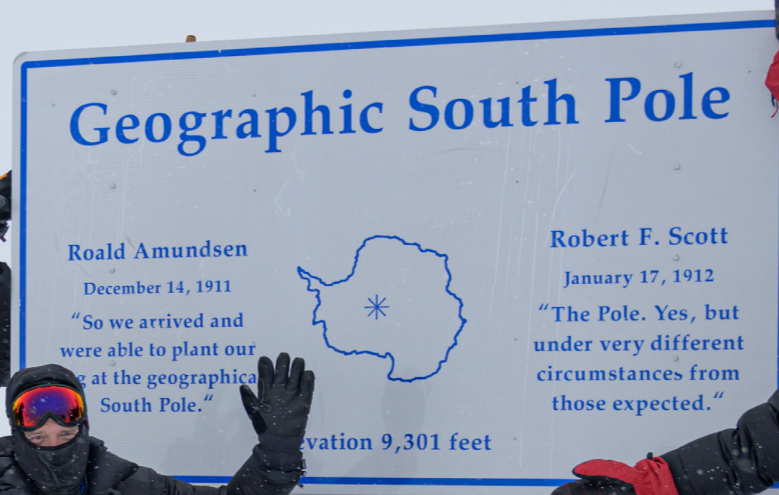
There are so few visitors to this colony that the chicks are unafraid of humans and often waddle close by. Mindful of our responsibility to the Antarctic environment and of IAATO guidelines, we keep at least 5m (16.4ft) from the penguins while taking in all the sights and sounds of this rare wildlife spectacle, which remains one of the greatest thrills on Earth!

[▶ Watch a video about the Emperor Penguins](#)



South Pole

ADVENTURE



It is a total of 2,400km (1,500mi) from Whichaway to the South Pole. The first part of the journey is a 5-hour flight to FD83, our expedition camp. Flying 3,000m (10,000ft) above the ice, your view is sensational as we cross the High Polar Plateau.

We stop for 1 hour to refuel and then continue another 2 hours to the South Pole itself. There is a true sense of remoteness at this point where, for as far as the eye can see, the white horizon meets the pure blue sky.

The South Pole – the very lowest point on the Earth and the holy grail of early explorers. Even though we operate approximately ten flights to the South Pole per year, we have had a 100% success rate in reaching the Pole since the 2017/18 season.

[▶ Watch a video about the South Pole Excursion](#)

THE *Greatest Day* EVER



Come join us on the world's most extraordinary day trip.

PRE TRIP BRIEFING

Often tipped as one of the most beautiful cities in the world, Cape Town is home to award-winning vineyards and stunning ocean vistas.

We will host a safety briefing the day before your scheduled flight where our staff will explain all kit requirements, assist with any last-minute preparations and update you on the latest weather forecasts for Antarctica.

DAY ONE

Leaving Cape Town via Gulfstream jet, we soar over thousands of icebergs as we pass into 24 hours of continuous daylight. Landing on Wolf's Fang Runway deep in the interior of Antarctica, you will experience a landscape unlike anything else on earth and become one of the few that have ever stepped foot on the Seventh Continent.

Our UIAGM-qualified mountain guides will lead you on a gentle hike to the base of a nearby mountain where we will host a picnic with views like no other. For the more daring, you'll be guided to the summit to look over the mountains of the Wolf's Fang range.

Or if climbing isn't your thing, you're welcome to ride a fat bike on our specially-prepared trails or go on a 4x4 safari drive.

Return to Cape Town after a 5 hour private jet ride and reflect on experiencing *the greatest day ever*.



1 DAY

FLIGHT TO WOLF'S FANG, ANTARCTICA: **5 HOURS**
 MAXIMUM GUESTS: **12**
 AIRCRAFT: **GULFSTREAM G550**

TIME IN ANTARCTICA: **APPROX 3-4 HRS**
 FITNESS: **NO SPECIFIC LEVEL REQUIRED**
 PRICING: **US\$14,500**



EARLY *Emperors*



This trip offers unique access to a magnificent penguin colony when the chicks are taking their first steps off their parent's feet.

PRE TRIP BRIEFING

We will host a safety briefing the day before your flight in Cape Town.

DAY ONE

You fly over thousands of icebergs on our 5-hour flight across the Southern Ocean to Antarctica.

During the flight, you enter the Polar Circle and the continuous daylight of the Antarctic summer.

After landing on the ancient blue ice of the runway, you will transfer to our camp at Whichaway and have the chance to stretch your legs on a gentle hike around the Oasis.

DAY TWO

Settle into Whichaway and do as much or as little as you like each day. Activities range from gentle treks to the incredible ice waves, summiting a nunatak, ice climbing and even abseiling!

After the day's activities you will hear a talk about the incredible life cycle of the Emperor Penguins in preparation for your visit the following day

DAY THREE

You fly 2.5 hours across Antarctica on our BT-67 aircraft, enjoying immense views of the High Polar Plateau, before landing at the Emperor Penguin colony at Atka Bay.

Wrapped up in the sights and sounds of thousands of penguins, you will be among the very few who have ever witnessed such a spectacle, observing the real-life stars of March of the Penguins.

DAY FOUR

You spend the day exploring the ice waves below our camp, delving into the series of ice tunnels that are as surreal as they are beautiful.

Then you'll be off on an Arctic Truck safari, winding your way through the snow and ice to an incredible vantage point where you can take in the panoramic view over the waves that you have just explored.

DAY FIVE

An adventurous hike along a winding cliff face shows you stunning views of the extraordinary waves of ice that have been created over millennia by constant pressure from the ocean. Our world-class mountain guides will lead you on this challenging hike, ensuring your safety at all times on this unforgettable day.

6
DAYS

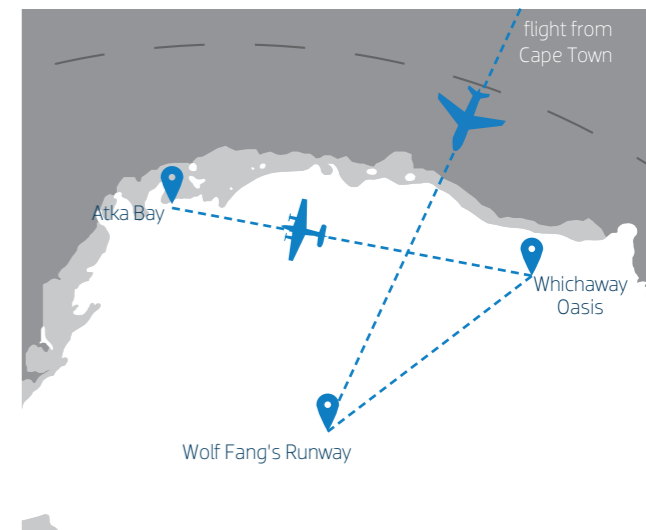
FLIGHT TO WOLF'S FANG, ANTARCTICA: **5 HOURS**
MAXIMUM GUESTS: **12**
AIRCRAFT: **GULFST REAM G550 & BASLER BT-67**

FLIGHT TO PENGUINS: **2.5 HOURS EACH WAY**
FITNESS: **NO SPECIFIC LEVEL REQUIRED**
PRICING: **US\$60,000**

DAY SIX

The flight out of Antarctica will be the last of your enduring Antarctic memories before you delve back into the vibrant energy of Africa. You will be transferred to your hotel where you will have a chance to relax and reflect on your Antarctic adventure!

[▶ Watch a video about the Emperor Penguins](#)



South Pole & EMPERORS



Our signature 8-day journey brings you the very best of Antarctica – a visit to an Emperor Penguin colony of over 28,000 birds and a flight to the lowest point on Earth – the Geographic South Pole.

PRE TRIP BRIEFING

We will host a safety briefing the day before your flight in Cape Town.

DAY ONE

You fly over thousands of icebergs on our 5-hour flight across the Southern Ocean to Antarctica.

During the flight, you enter the Polar Circle and the continuous daylight of the Antarctic summer.

After landing on the ancient blue ice of the runway, you will transfer to our camp at Whichaway and have the chance to stretch your legs on a gentle hike around the Oasis.

DAY TWO

Settle into Whichaway and do as much or as little as you like each day.

Activities range from gentle treks to the incredible ice waves, summiting a nunatak, ice climbing and even abseiling!

After the day's activities you will hear a talk about the incredible life cycle of the Emperor Penguins in preparation for your visit the following day.

DAY THREE

You fly 2.5 hours across Antarctica on our BT-67 aircraft, enjoying immense views of the High Polar Plateau, before landing at the Emperor Penguin colony at Atka Bay.

Wrapped up in the sights and sounds of thousands of penguins, you will be among the very few who have ever witnessed such a spectacle, observing the real-life stars of March of the Penguins.

DAY FOUR

We spend the day exploring the ice waves below our camp, delving into the series of ice tunnels that are as surreal as they are beautiful.

Then you'll be off on an Arctic Truck safari, winding your way through the snow and ice to an incredible vantage point where you can take in the panoramic view over the waves that you have just explored.

DAY FIVE

We leave early in the morning in our Basler BT-67 aircraft, flying over stunning mountain ranges before landing at 83° South to refuel.

After a walk on the High Polar Plateau we will continue to the South Pole, where you will have plenty of time for photos and a chance to stamp your passport before flying back to 83° South and overnighing in camp Dixie in the great wilderness of the Plateau.

8
DAYS

FLIGHT TO ANTARCTICA: 5 HOURS
MAXIMUM GUESTS: 12
AIRCRAFT: GULFSTREAM G550 & BASLER BT-67

FLIGHT TO SOUTH POLE: 7 HOURS EACH WAY
FITNESS: NO SPECIFIC LEVEL REQUIRED
PRICING: US\$96,000

DAY SIX

After a night under canvas, you'll enjoy a hearty breakfast before boarding the plane once again for the flight back to Whichaway.

The flight is the perfect chance to appreciate the immense scale of Antarctica, before you return to our camp for a three-course champagne dinner to celebrate your achievement.

DAY SEVEN

An adventurous hike along a winding cliff face affords guests stunning views over pressure ridges of ice that have been folded over millennia by the ocean.

Our world-class mountain guides will lead you on this challenging hike, ensuring your safety at all times.

DAY EIGHT

The flight out of Antarctica will be the last of your enduring memories of the great White Continent before you dive back into the vibrant energy of Africa.

You will be transferred to your hotel where you will have a chance to relax and reflect on your Antarctic adventure!



[Watch a video about the South Pole Excursion](#)



Luxury Cruising

FROM SOUTH AMERICA

Cruises to Antarctica typically depart from Ushuaia in South America and head toward the Antarctic Peninsula where the climate, whilst frigid, is temperate by comparison to the rest of Antarctica. Here the scenery is as dramatic as it is breathtaking, and wildlife is abundant.

After just under two days crossing the Drake Passage, beyond the Antarctic Convergence, travellers will be greeted by life changing vistas and a feeling that is impossible to describe.

Vessels that take this journey are varied. The most exceptional take sustainability, adventure, and luxury all into consideration, combining to offer the ultimate Antarctic experience.

Within the following pages you will find the best crafted vessels, catering to the needs of the conscious and curious traveller.





LUXURY CRUISING

Le Commandant Charcot

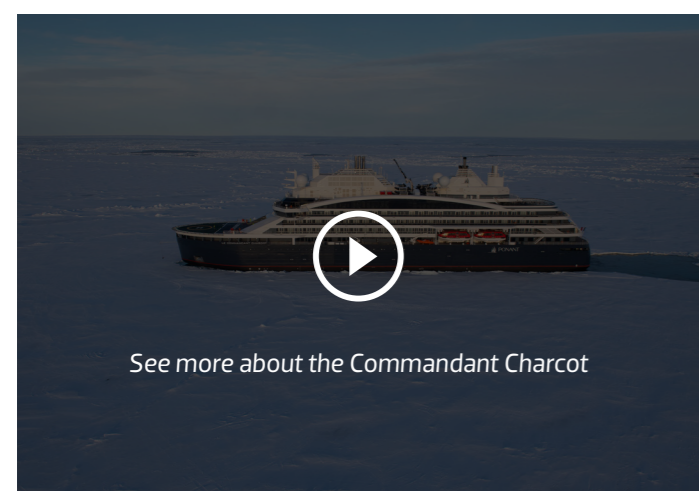
150 METRES IN LENGTH | **1CP2** ICE CLASS | DRAFT: **10M** | CRUISING SPEED: **15 KNOTS** | MAX PASSENGERS: **270**

CREW MEMBERS: **215**
RESTAURANTS: **2**
SWIMMING POOLS: **2**

The World's First Hybrid-Electric LNG-powered Luxury Polar Exploration Vessel

A superbly luxurious environment with generously sized spaces, this ship combines sophistication with openness and a warm, friendly atmosphere.

THE REINFORCED HULL (PC2 CLASS: ICEBREAKER)
Le Commandant Charcot is the first cruise ship in the world to be fitted with a PC2 class (icebreaker) reinforced hull. Its powerful propulsion system, fittings and equipment, which exceed the requirements of the Polar Code, have been designed to enable completely safe navigation through the regions at the furthest extremities of the planet. But with the innovative, industry-leading navigation technologies aboard this ship, it ensures our path leaves minimal impact on the environment.



SUSTAINABILITY
This ship utilises liquefied natural gas (LNG), and is fitted with the most advanced environmental technology in the industry, greatly optimising energy consumption, water treatment and waste management. Benefits include:

- > 25% reduction in carbon emissions
- > 85% reduction in nitrogen oxide emissions
- > 95% reduction in fine particle emissions

All CO2 emissions incurred by our voyages are 100% offset. In order to do this, we contribute towards specific projects certified by Verra Standards for a sustainable future, one of the two most substantial standards in the world.

WORLD-CLASS EXPEDITION TEAM
Biologists, naturalists, engineers, glaciologists, and geologists - these experts in the polar regions will be on hand to ensure the safety of all your activities and experiences and to share their passion for the poles. They will be by your side throughout your voyage of discovery, providing key insights to help you get the most out of the encounters with fauna, flora and local populations that await you, and helping you better understand the stakes and challenges involved in preserving this natural and cultural heritage.

SCIENTIFIC LABORATORIES
It hosts scientific researchers in disciplines such as glaciology, oceanography, marine biology, climatology and the social sciences. Their expertise is shared onboard through presentations and citizen science sessions.

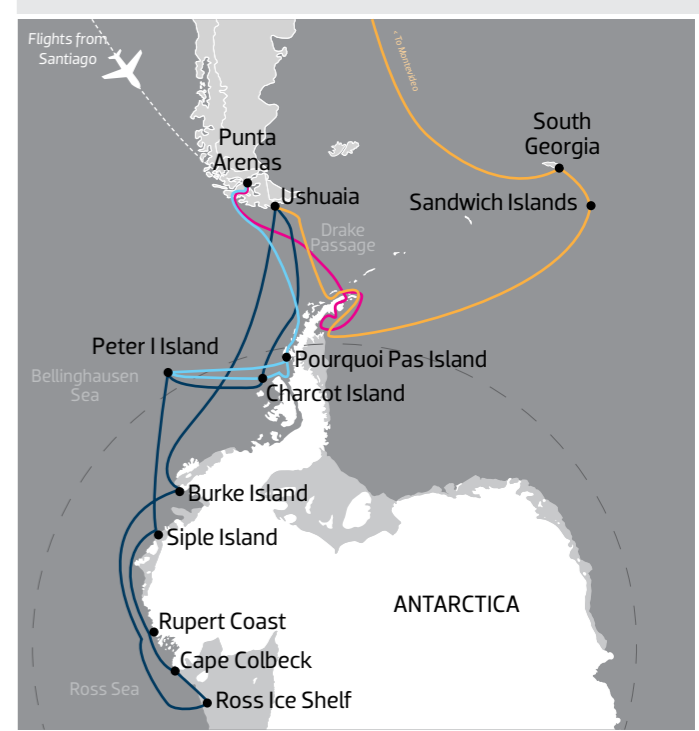
CULINARY EXCELLENCE
Featuring the first Alain Ducasse restaurant at sea, guests will be treated to an artful blend of flavours paired with strict preparation. A 21 Michelin star chef, Ducasse has designed a menu of culinary masterpieces using only the finest ingredients.

CONTEMPORARY DESIGN
Designed by Jean-Phillippe Nuel and Jean-Michael Wilmotte, the interior spaces onboard have magnified the exterior environment through the use of large openings, refined lines and light tones. The suites and staterooms, ranging in size from 20 to 115 m², provide warm, understated settings that look out onto the outside world. Each has a private balcony or terrace, providing a rare and exceptional ambiance for every passenger with the feeling and sense of sailing on a private yacht. At the rear of decks 6 and 7 are four stunning 94 m² split-level suites equipped with private terraces and jacuzzis.

BLUE LAGOON AND THE BRASERO
After a relaxing bath in the lagoon heated by the energy recuperation system, settle down comfortably by the brazier and enjoy the delights of the polar landscapes while savouring one of the refined dishes from the bar's à la carte menu.

THE JARDIN D'HIVER (WINTER GARDEN) AND DETOX BAR
Treat yourself to a relaxing moment by the indoor swimming pool in the Jardin d'Hiver. Lie back with a detox cocktail in hand and contemplate the magical polar scenery through the panoramic windows. After a moment of relaxation at the spa or the sauna, enjoy the beneficial effects of ice at the snow cabin.

- ITINERARIES**
- The Weddell Sea & Larsen Ice Shelf
 - Expedition to Charcot & Peter I Islands
 - The Weddell Sea & the South Sandwich Islands
 - The Ross Sea





Ultramarine

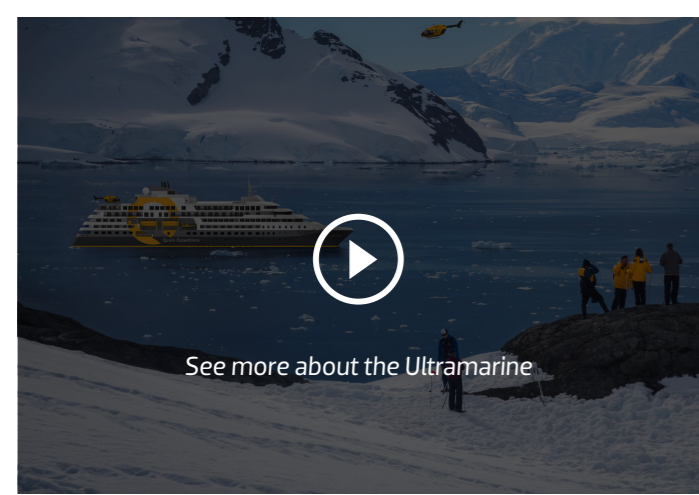
Designed to go beyond the familiar in polar exploration, to discover new places, and to immerse you in the best the region has to offer.

Equipped with two twin-engine helicopters, Ultramarine offers the most robust portfolio of adventure activities which is a game changer for those wishing to experience the unique.

With all this and more, Ultramarine is set to deliver the ultimate polar expedition experience.

SUSTAINABILITY

Micro Auto Gasification System (MAGS) is the industry-leading system that converts waste into energy at the site that it's generated. MAGS eliminates the environmental impact of waste transportation, offering an innovative sustainability feature that exceed all industry standards.



FOUR EMBARKATION POINTS

Embarkation points on the starboard, port, and stern of the ship mean we can load and embark Zodiacs faster, safer and easier than ever before.

TWIN ENGINE HELICOPTERS

Two twin-engine helicopters operated from two helidecks allow more passengers to simultaneously experience new destinations accessible only by air, and to enjoy more unique aerial perspectives of the polar regions than on any other ship.

WATER-LEVEL ZODIAC HANGAR

An internal Zodiac hangar quickly and safely deploys Ultramarine's twenty Zodiacs, allowing for more spontaneous off-ship adventures and more intimate wildlife engagement. This unique design allows guests to get off the ship in half the time of other vessels.

SUITES & STATEROOMS

Ultramarine features 102 suites across nine categories, including six solo suites with floor-to-ceiling windows and the largest entry-level twin suites of its class. Each suite has been meticulously designed to keep guests inspired by, and connected to, the breathtaking polar landscapes outside.

RESTAURANT

Featuring table tops that accommodate 2 to 10, guests can enjoy a quiet dinner with a loved one or join a larger table of new friends. Guests will also enjoy views from every seat in addition to direct access to the wraparound deck.

128
METRES IN LENGTH

1A
ICE CLASS

DRAFT: **5.1M**
CRUISING SPEED: **16 KNOTS**
MAX PASSENGERS: **199**

CREW MEMBERS: **140**
RESTAURANTS: **1**
SWIMMING POOLS: **1**

PANORAMA LOUNGE AND BAR

Enclosed in glass and featuring unobstructed views, the Panorama Lounge and Bar allows guests to relax indoors while staying connected to the awe-inspiring landscapes drifting by. It serves as a cozy gathering point where guests can sip a glass of wine, engage in great conversation, indulge in a board game, or socialise at the bar—and, later in the evening, bust a move on the dance floor.

SPA, SAUNA & STEAM ROOM

Featuring calming spaces with panoramic views, the spa offers a variety of treatments exclusively crafted for our guests, to fully relax and unwind before their next off-ship adventure.

FITNESS CENTRE

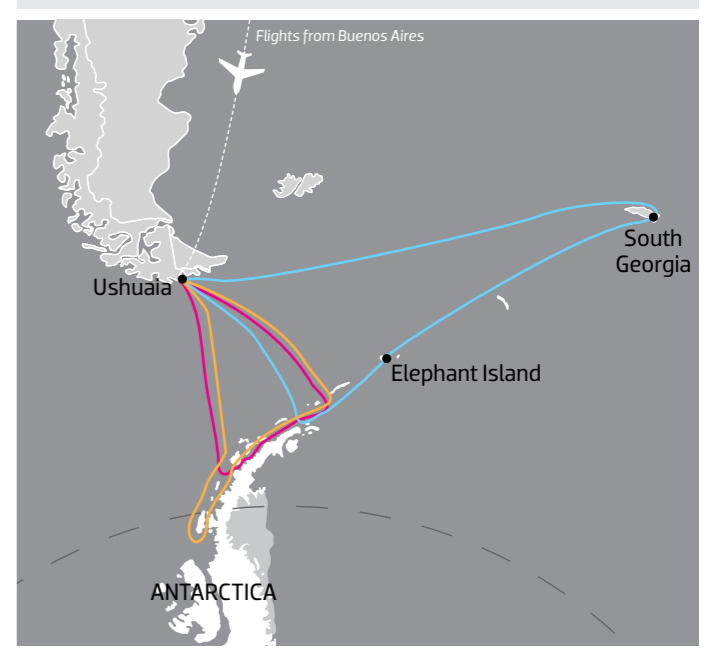
In the fully-equipped fitness center, featuring a separate yoga space with views to the outside.

HELI-ADVENTURES

Our helicopters mean we can move people to explore further once they arrive in the Polar Regions, to set foot where few humans have ever walked—something our competition can't offer. Heli-Adventures include Flightseeing, Exclusive Heli-Landing, Heli-Hiking, Mountain Biking, Alpine Kayaking and more.

ITINERARIES

- **Antarctic Explorer: Discovering the 7th Continent**
- **Celebrating Shackleton: Journey from Antarctica to South Georgia**
- **Crossing the Circle**
- **Epic Antarctica: Crossing the Circle via Falklands and South Georgia**



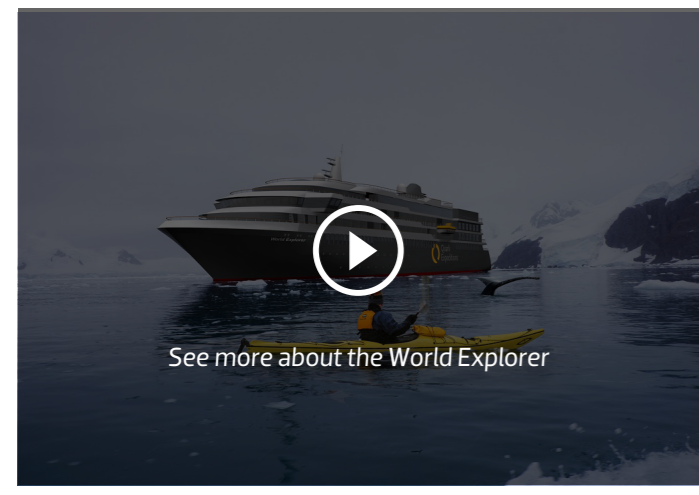


World Explorer

Distinct and comfortable, refined and roomy, the 172-guest World Explorer is an all-balcony, all-suites expedition ship perfect for polar exploration.

The personal space is exceptional. Every suite has either a private walk-out or French balcony for direct ocean views. World Explorer also delivers plenty of public areas to unwind in after a day outdoors, including the glass-domed Observation Lounge for quiet contemplation and full skyline views, the Explorer Lounge for a drink and a chat, and the library for more intimate relaxing and reading. Presentations and discussions are facilitated in a dedicated lecture theatre.

Health and wellness facilities feature an outdoor track, a small gym and a sauna, plus a spa with change rooms, showers and lockers. For the active adventurers, add-ons include kayaking, camping and stand-up paddleboarding.



2 ROLLS ROYCE ENGINES

World Explorer features two state-of-the-art Rolls Royce hybrid-electric engines, significantly reducing its environmental impact on the Polar Regions.

SUSTAINABILITY

Micro Auto Gasification System (MAGS) is the industry-leading system that converts waste into energy at the site that it's generated. MAGS eliminates the environmental impact of waste transportation, offering an innovative sustainability feature that exceed all industry standards.

CONTEMPORARY DESIGN

The ship delivers plenty of public areas to unwind in after a day outdoors, including the glass-domed Observation Lounge for quiet contemplation and full skyline views, the Explorer Lounge for a drink and a chat, and the library for more intimate relaxing and reading. Presentations and discussions are facilitated in a dedicated lecture theatre.

SUITES & STATEROOMS

Ranging in size from 20 to 33 m², The personal space is exceptional. Every suite has either a private walk-out or French balcony for direct ocean views. Each cabin has a private bathroom featuring complimentary L'Occitane products.

OUTDOOR TRACK

The Outdoor Track offers a great way to stay active while aboard World Explorer; get your steps in while also enjoying the stunning landscapes and wildlife viewing opportunities the Polar Regions have to offer.

WRAPAROUND DECK

Take in panoramic views of the Polar Regions on the wraparound deck; various areas also feature heated seating, allowing for optimal comfort while out on deck.

126
METRES IN LENGTH

1B
ICE CLASS

DRAFT: **4.7M**
CRUISING SPEED: **16 KNOTS**
MAX PASSENGERS: **172**

CREW MEMBERS: **130**
RESTAURANTS: **1**
SWIMMING POOLS: **1**

RESTAURANT

Enjoy breakfast and lunch buffet style, while dinners are served plated in an open seating atmosphere. Although meal times may change due to landings and wildlife encounters, you'll always enjoy three delicious meals a day. An assortment of fresh-baked cookies and/or pastries are offered in the afternoon, as are hot and cold snacks during cocktail hour. A well-stocked bar is open from mid-morning into the evening with a selection of premium beers, wines, liquors and spirits.

READY ROOM (MUD ROOM)

The Mudroom on enables you to comfortably prepare for, and disembark from, Zodiac excursions and shore landings and is conveniently located adjacent to zodiac embarkation points.

HEALTH AND WELLNESS

The facilities feature an outdoor track, a great way to stay active while enjoying the stunning landscapes and wildlife, a small gym and a sauna, plus a spa with change rooms, showers and lockers.

OUTDOOR POOL

The ship features a large heated outdoor pool, surrounded by deck space, and flanked by two hot tubs.

ADVENTURE ACTIVITIES

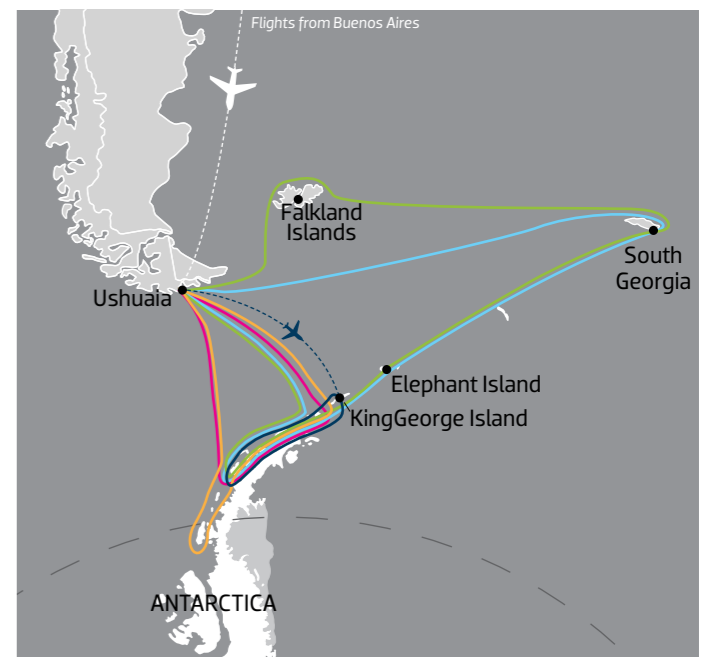
For the active adventurers, add-ons include kayaking, camping and stand-up paddleboarding.

POLAR BOUTIQUE

If you forgot any essentials or need a little souvenir from your voyage, the Polar Boutique offers a selection of expedition gear, including base layer clothing, waterproof pants, gloves and more

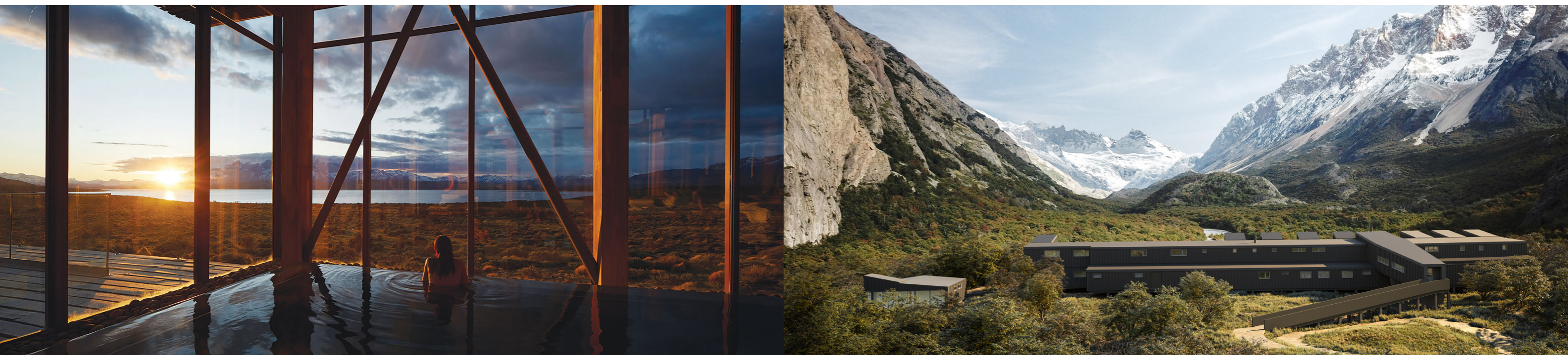
Itineraries

- Antarctic Explorer: Discovering the 7th Continent
- South Georgia and Antarctic Peninsula: Penguin Safari
- Crossing the Circle: Southern Expedition
- Antarctic Express: Fly the Drake
- Falklands, South Georgia, and Antarctica: Explorers and Kings



Extend your stay

Unwind after your Antarctic adventure at one of our hand-picked, all inclusive luxury lodges. Located in the most picturesque areas of Patagonia, these properties provide a base camp of luxury whilst you indulge in the included adventures to help explore the stunning surroundings.



Tierra Patagonia

Emerging beside craggy mountains and the glistening Lake Sarmiento in Torres del Paine National Park, Tierra Patagonia weaves itself into the landscape with subtle style, blending into the magnificence of the region. Here in this untamed part of the world, what you see at our adventure spa hotel is emerald lakes, fantastic mountain ranges and abundant wildlife.

DESIGN & FACILITIES

The hotel architecture and interiors radiate ambience of Patagonian warmth and comfort. Large windows provide excellent mountain and lake views.

Hotel facilities include the living room, bar, dining room, excursions area, library, TV lounge, iPads for guests use, WiFi, store, outdoor terrace and full Uma Spa.

GUEST ROOMS

An ode to nature, like the rest of hotel. The space is elegant yet understated, made with local wood, with whitewash walls on either side to focus your attention on the views beyond.

SUSTAINABILITY

Tierra Patagonia is committed to its care and protection. Their principle aim is the provide the best Adventure Spa services that produce the least impact possible.

ACTIVITIES

- > Biking
- > Hiking
- > Horse Riding
- > Fly-fishing
- > Bird watching
- > Scenic Road Trips



[▶ See more about Tierra Patagonia](#)

Explora El Chaltén

With views to the Electric Valley and the Marconi Glacier, Explora in El Chaltén will open its doors in 2021. 17 km away from El Chaltén – in the Argentinian Patagonia– the lodge is a headquarter from where to explore a world-renowned destination by those who love nature and trekking.

DESIGN & FACILITIES

The Explora lodge in El Chaltén has been strategically built within the Los Huemules Conservation Reserve, our long-standing conservation partners in the region. Featuring a spa where you can stop, breathe and recompose. Let the journey behind you sink-in, while the journey ahead awaits.

GUEST ROOMS

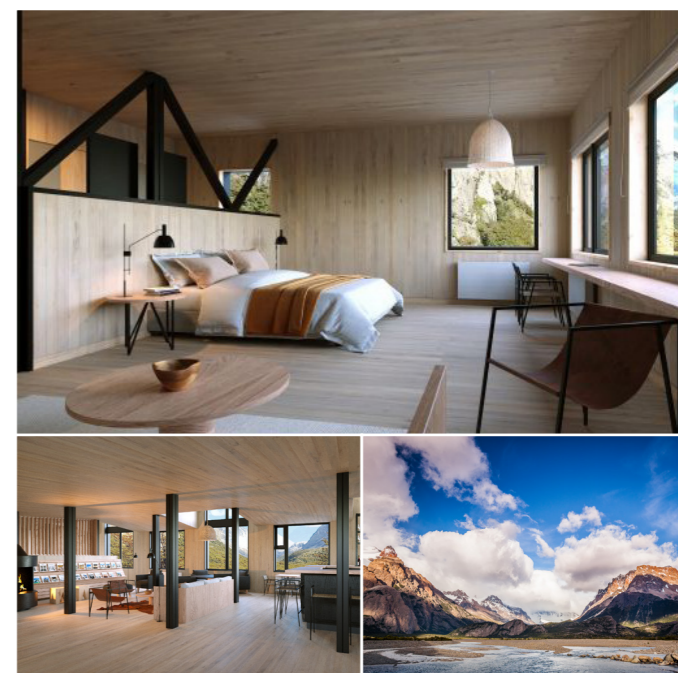
We believe luxury is about having all the means necessary to make the most out of the experience, such as a cozy, welcoming environment, and authentically local gastronomic experiences.


SUSTAINABILITY

We are deeply committed to conserving the marvels we explore daily: unparalleled local nature, astounding culture, and rich heritage. Conservation-driven initiatives – like our lodge architecture, among other conscious processes we adopt – are a vital piece of this greater picture.

ACTIVITIES


- > Biking
- > Hiking
- > Rock Climbing
- > Scenic Road Trips





Chimu


Antarctica & the Arctic



Antarctic Peninsula, Weddell Sea, Falkland Islands, South Georgia, Antarctic Circle, Antarctic Mainland, East Antarctica, Sub-Antarctic Islands, Ross Sea, Arctic Circle, Spitsbergen, Greenland, Canadian Arctic, Russian Arctic, North Pole


Travel with the Latin America and Polar Specialists

Live for today...



Chimu


Latin America



Peru, Ecuador, Galapagos, Colombia, Brazil, Uruguay, Bolivia, Argentina, Chile, Mexico, Guatemala, Belize, Honduras, Nicaragua, Costa Rica, Panama, Cuba, Antarctica & The Arctic

Travel with the Latin America and Polar Specialists


Live for today...



Chimu

Great Southern Flights

Antarctica Day Flights - Southern Lights by Flight



chimuadventures.com

Your travel agent: