



MS FRAM

MS Fram is a purpose built 12,000-ton vessel that incorporates all the best of both practical and traditional design. Named after the ship used by famous Norwegian explorer Fridtjof Nansen, MS Fram's interior has been inspired by Greenland and the Arctic region with a glass-enclosed observation lounge and excellent leisure facilities including a gym, sauna and two heated outdoor Jacuzzis.

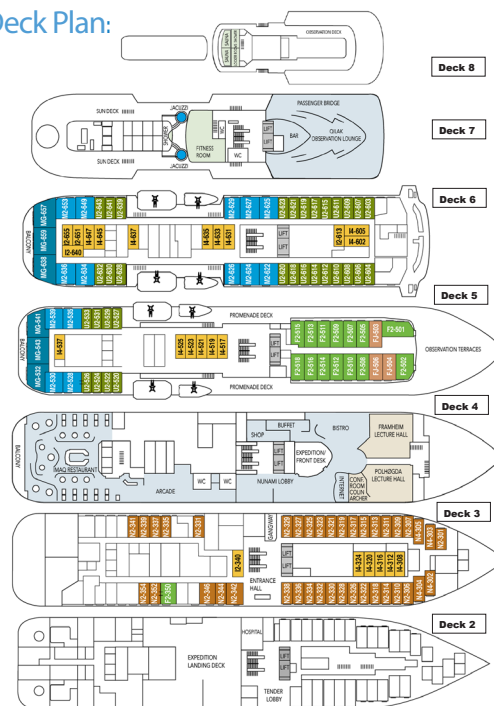
Technical Information

Built: Fincantieri, Italy, 2007
Ice Class: 1B
Length: 114m (374ft)
Breadth: 20.2m (66ft)
Max Draft: 4.6m (15ft)
Gross Tonnage: 11,647 GRT
Cruising Speed: 13 knots
Passenger Capacity: 318 (maximum)
Crew: 136
Stabilizers: Yes

Safety Features

The vessel has the highest ice-class notation (UL1 equivalent to 1A) and is therefore very suitable to navigate in solid one-year sea ice and loose multi-year pack ice.

Deck Plan:



Amenities

- Numerous lounges
- Two heated outdoor Jacuzzis
- Fitness room with panoramic ocean views
- Salon
- Restaurant
- Gym
- Sauna
- Laundry
- Medical facilities
- Library
- Exhibition of original artefacts from the historic expeditions of Amundsen and Nansen.

Why Choose this Ship?

The ship is purpose built as an expedition vessel with a high ice-class, chart drawing tools, ship depth sounding database, extractable forward sounding sonar, iceberg search lights, autonomous tracking system, oversized oil retention system for self-sufficiency, and a full 'expedition tools-deck' equivalent to a car-deck that holds 25 vehicles.



Chimu The Latin America and Polar Specialists

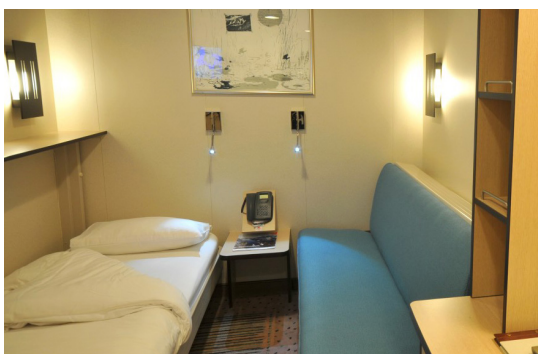
Live for today...

Cabins



Polar Outside (42)

- Located on Deck 3 and Deck 5. Three cabins on Deck 5 have limited or no view
 - 2 beds with one convertible to a sofa
 - Private bathroom with shower and toilet
- Cabins 342 & 346 adapted for guests with disabilities



Polar Inside (24)

- Located on Deck 3, 5 & 6
- 2 beds with one convertible to a sofa (Upper & Middle Deck)
- Private bathroom with shower and toilet



Arctic Superior (47)

- Located on Decks 3, 5 & 6
- 2 beds with one convertible to a sofa
- Private bathroom with shower and toilet
- Tea and coffee-making facilities

Cabins



Suite (14)

- Located on Decks 5 & 6
- Double bed
- Private bathroom with shower and toilet
- Bathrobes
- Slippers
- Seating area
- TV
- Mini-bar



Grand Suite (6)

- Located on Decks 5 & 6 at the Stern of the ship
- Double bed
- Private bathroom with toilet and shower/bathtub
- Bathrobes and slippers
- Seating area or 2nd room
- TV
- Mini-bar
- Kettle
- Tea and coffee
- Stereo
- Private balcony or bay window