



MS MIDNATSOL

With its modern design and strong environmental profile, the MS Midnatsol was built with exploration in mind, ice-strengthened and equipped with advanced technology making her well suited to Antarctic voyages. Meaning Midnight Sun, the Midnatsol has a bright colourful interior décor and a large, two-storey panorama lounge that provides spectacular views. Other features of the ship include sundeck, sauna, Jacuzzi, bars, café, restaurants, library, shop and fitness room as well as a theatre for lectures.

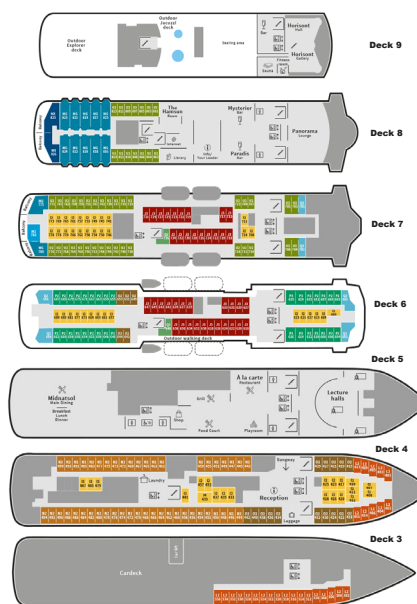
Technical Information

Built: Fosen Mekaniske Verksteder, Norway 2003
Ice Class: 1C
Length: 135.75m (445.37ft)
Breadth: 21.5m (70.5ft)
Gross Tonnage: 16,151 GRT
Cruising Speed: 15 knots
Passenger Capacity: 500 (maximum)

Safety Features

MS Midnatsol is an ice class 1C ship and equipped with advanced technology, making her very well suited for expedition voyages in Antarctica.

Deck Plan:



Amenities

- Two-storey panorama lounge
- Bars
- Café
- Library
- Restaurant
- Separate a la carte restaurant
- Playroom
- Sauna
- Shop
- Jacuzzi
- Fitness room
- Lift
- Wi-Fi
- Amfi theatre for educational lectures and conference facilities

Why Choose this Ship?

Due to her size, the MS Midnatsol is more stable than smaller vessels in waters such as the Drake Passage. Her reduced capacity on Antarctic voyages makes her a ship to consider. With a large, highly experienced expedition crew – personalised service is paramount. Despite passenger numbers, shore landings are offered as well as a range of active options such as kayaking, snowshoeing and camping.

Cabins



Polar Outside (115)

- Located on Deck 3, 4, 6, 7
- Portholes – Deck 3 & 4 (31)
- Limited or no view – Deck 6 & 7 (22)
- Private bathroom with shower and toilet
- Maximum 2 passengers
- 2 separate beds on Deck 4 (62)
- 2 beds with one convertible to a sofa on Deck 3, 4, 6, 7
- Cabins 614, 616, 619, 625 are adapted for guests with disabilities



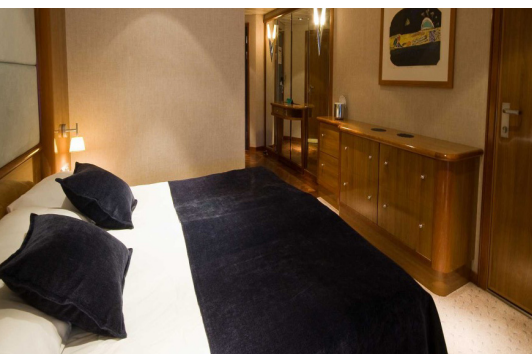
Polar Inside (61)

- Located on Deck 4, 6, 7
- 2 beds with one convertible to a sofa
- Private bathroom with shower and toilet
- Maximum 2 passengers



Arctic Superior (83)

- Located on Deck 6, 7, 8
- 2 beds with one convertible to a sofa
- Private bathroom with shower and toilet
- Tea and coffee making facilities
- Double bed, TV and minibar on Deck 7
- Maximum 2 passengers



Mini Suite (8)

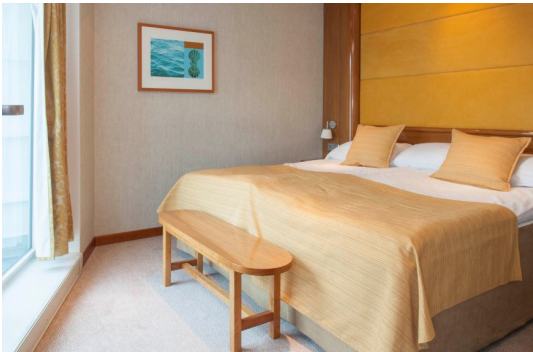
- Located on Deck 6, 7
- Double bed
- Private bathroom with shower and toilet
- Bathrobes
- slippers
- TV
- Internet access
- Minibar
- Seating area
- Maximum 2 passengers

Cabins



Suite (1)

- Located on Deck 7
- Double bed
- Private bathroom with shower and toilet
- Bathrobes
- slippers
- TV
- Internet access
- Minibar
- Seating area
- Balcony
- Maximum 2 passengers



Grand Suite(12)

- Located on Deck 7 and 8
- Double bed
- Private bathroom with shower, bathtub and toilet
- Bathrobes
- slippers
- Tea , coffee & kettle
- Stereo
- TV
- Internet access
- Minibar
- Seating area
- Private balcony or bay window



Owners Suite (2)

- Located on Deck 8 at the Stern of the Ship
- Double bed
- Private bathroom with shower, bathtub and toilet
- Bathrobes
- slippers
- Tea, coffee & kettle
- Stereo
- TV
- Internet access
- Minibar
- Dining table
- 2 rooms
- seating area
- Private balcony