



OCEAN NOVA

The MV Ocean Nova is a modern, comfortable vessel. She was built in Denmark in 1992 to sail the ice-choked waters of Greenland, and her ice-strengthened hull is ideally suited to expedition travel in Antarctica. The MV Ocean Nova has the capacity for 78 passengers accommodated in 38 comfortable outside cabins, all with exterior views and private en-suite facilities. In addition to a glass-enclosed observation lounge and presentation room, on board facilities include a spacious dining room, a bar, a library, a polar boutique, an exercise room and an infirmary with doctor. The ship carries Zodiacs that are well suited for shore transfers and cruising.

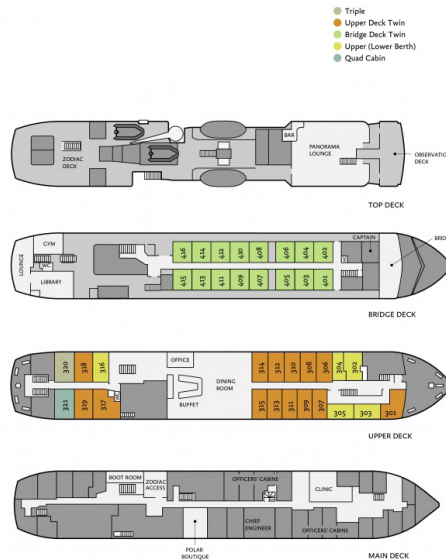
Technical Information

- Built:** Denmark 1992
- Ice Class:** 1B (Casco 1A)
- Length:** 73m (239.5ft)
- Breadth:** 11m (36ft)
- Draft:** 3.7m (12.1ft)
- Cruising Speed:** 12 knots
- Passenger Capacity:** 78 (maximum)
- Crew:** 38

Safety Features

4 fully enclosed lifeboats, a clinic with on-board licensed doctor.

Deck Plan:



Amenities

- Glass-enclosed observation lounge
- Presentation room
- Spacious dining room
- Bar and 24 hour beverage service
- Library
- Small gym
- Infirmary
- 7 Zodiacs
- Chef-prepared meals
- Polar Boutique

Why Choose this Ship?

"Modern, small and comfortable. Fewer passengers means that you get to know everyone on board by name, making great friendships with fellow passengers and the crew - you'll be sad to say goodbye to Antarctica and your new mates! The cabins are huge, and a smaller ship means you'll have shorter ship-to-shore excursions - which is a bonus on cooler days! Head out onto the bridge and hang with the captain, he's been with the ship a long time, and knows it capabilities inside out - you're in very safe hands!" -

- Sarah Baxter - Relationship Manager



Chimu The Latin America and Polar Specialists

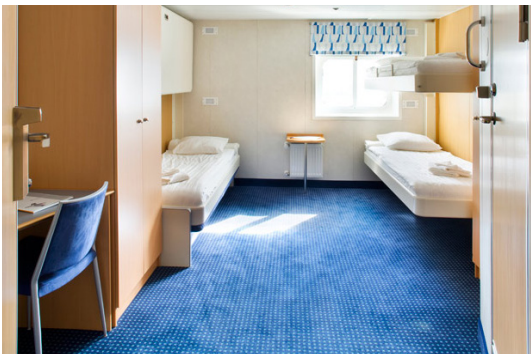
Live for today...

Cabins



Quad Cabin (1)

- Located on Upper Deck
- 2 upper berths
- 2 lower berths
- En-Suite facilities
- Flat-screen TV
- DVD Player
- Chair and a desk
- Exterior window
- Hairdryer
- Bathrobes
- Climate control



Triple Cabin (1)

- Located on Upper Deck
- 1 upper berth
- 2 lower berths
- En-Suite facilities
- Flat-screen TV
- DVD Player
- Chair and a desk
- Exterior window
- Hairdryer
- Bathrobes
- Climate control



Bridge Deck Twin Cabin (16)

- Located on Bridge Deck
- 2 lower berths
- En-Suite facilities
- Flat-screen TV
- DVD Player
- Desk and a chair
- Ample storage space
- Exterior window
- Hairdryer
- Bathrobes
- Climate control

Cabins



Upper Deck Twin Cabin (14)

- Located on Upper Deck
- 1 upper berth
- 1 lower berth
- En-Suite facilities
- Flat-screen TV
- DVD Player
- Desk and a chair
- Exterior window
- Hairdryer
- Bathrobes
- Climate control



Upper (Lower Berth) Single Cabin (5)

- Located on Upper Deck
- 1 lower berth
- En-Suite facilities
- Flat-screen TV
- DVD Player
- Desk and a chair
- Ample storage space
- Exterior window
- Hairdryer
- Bathrobes
- Climate control