

## ARGENTINA - ARGENTINIAN PATAGONIA



### TRIP CODE

ARTSPGT

### DURATION

8 Days

### LOCATIONS

Argentina, Patagonia



## INTRODUCTION

From the Moreno Glacier to Mount Fitzroy, this tour encompasses some of the greatest sites in the region. A mixture of trekking and sightseeing this is recommended for those with average fitness and above!

## ITINERARY

### DAY 1: Shuttle transfer El Calafate to El Chalten

On arrival at El Calafate Airport please make your way to the Las Lengas Counter located just after exiting security on the right and check in for the shuttle service to El Chalten. Please note as this is a shuttle service, the coach will depart once all passengers have arrived and vehicle is full. We cannot guarantee how long you will have to wait. Schedule is currently every two hours from 0730 hours to 1930 hours. Please note the schedule is subject to change without prior notice and waiting time frame can be from 15 minutes to 2 hours depending on flight schedules. Maximum weight limit is 23kg per person.



## ARGENTINA - ARGENTINIAN PATAGONIA

### DAY 1: El Chalten

El Chalten is a small mountain village that lies within the magnificent World Heritage Listed Parque Nacional Los Glaciares at the base of Cerro Torre and Cerro Fitz Roy mountains. "Chaltén" is a Tehuelche word that means "Smoking Mountain", as they believed that Cerro Fitz Roy was a volcano, its summit enshrouded by clouds. Today El Chaltén is Argentina's trekking capital. The towering granite spires and fissured glaciers of the Torre and Fitzroy groups offer some of the most stunning scenery and spectacular hiking and trekking in southern Patagonia. A network of world-class trails take you to viewpoints with breath-taking vistas including those of Cerro Torre and Cerro Fitzroy peaks. There are also tracks to Torre Glacier, Piedras Blancas Glacier, Laguna Capri, Laguna de los Tres, Chorillo del Salto and the remote Pasa del Viento (Windy Pass).



#### TRIP CODE

ARTSPGT

#### DURATION

8 Days

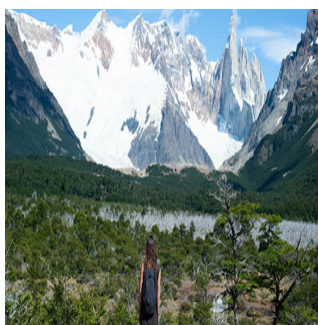
#### LOCATIONS

Argentina, Patagonia



### DAY 2: Chalten: Trekking to Plieque Tumbado

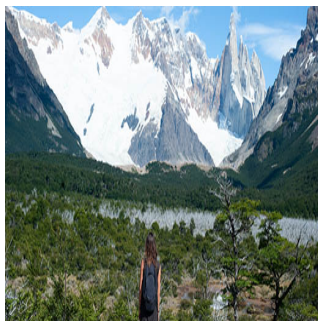
The El Chalten circuit trek is dotted with incredible panoramic views and offers an incredible trekking experience. The trailhead is on the edge of town, right by the National Park Administration Office. After 1 hour of walking in a slight ascent through lovely forests of beech and ñires, you reach an open area, called "Pampa de las Carretas" with a wide and beautiful view of Mount Fitz Roy, Torre and Huemul. Then the trail starts to go into the thick forest, where you can probably identify many birds that inhabit the area. Emerging from the forest we find ourselves in a barren mountain landscape, and here we can see many marine fossils - ammonites and belemnites that are 100 million years old. Once at the viewpoint, we have a spectacular view of almost the entire area: the Fitz Roy river canyon and Cerro Torre Glacier, the lagoons Madre and Hija, the Fitz Roy, and Laguna Condor. In the other direction, we can see the Viedma Lake, and the valley of the river Tunel, with the Windward Passage, the gateway to the Continental Ice.



## ARGENTINA - ARGENTINIAN PATAGONIA

### DAY 3: El Chalten Fitz Roy Trek

Today starts with a beautiful 18 kilometre drive through the valley to Hosteria Pilar. From here we trek through sub-Antarctic forest and pass the small glacier lake named Piedras Blancas before crossing the Rio Blanco and beginning the toughest part of the trek - a fifty minute climb that weaves its way up a 45° slope. Your hard work will be rewarded with a view of Laguna de Los Tres one of Patagonia's most majestic panoramic vistas. We then return to Chalten on foot via a different route. Includes box lunch, entrance fee & regular transfers.



### DAY 4: El Chalten : Free Day

Today is free to spend at your leisure in El Chalten and the surroundings.



### DAY 5: Chalten: Trekking to Laguna Torres

Next to the Fitz Roy, this is the other major trek, which ends with a beautiful view of one of the world's most difficult mountains to climb, Cerro Torre. The trail starts from the village, ascending alongside the river. After 20 minutes we get a view of the Fitzroy River Canyon, and see beautiful waterfalls. From here, you begin to have stunning views of Cerro Torre. After a rest at the first viewpoint, the hike continues for about an hour through a beautiful valley, with a few undulations, to De Agostini Base Camp, where some of the world's best climbers make base, waiting to climb the tower. After a few minutes more we reach the Lagoon Tower, with a magnificent view of Cerro Torre, the Egger, Standhard and Bifida peaks, and the Adelas cord with its stunning glaciers spilling into the lagoon. Then we head back down the same path.



#### TRIP CODE

ARTSPGT

#### DURATION

8 Days

#### LOCATIONS

Argentina, Patagonia

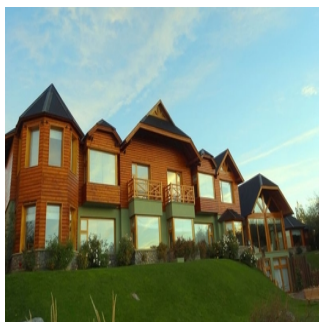




## ARGENTINA - ARGENTINIAN PATAGONIA

### DAY 6: Shuttle Transfer El Chalten to Downtown Calafate

Shuttle service to El Calafate operates 4 times per day between 0730 hours to 1830 hours and operates a door to door service from your hotels. Please note this shuttle does not pick up from Hosteria El Pilar, La Quinta Hotel and Eco Domes in El Chalten.and drop off at La Estepa, Edenia, Nibepo Aike, Galpon Glacier in El Calafate. Please note maximum luggage per person is 23kgs.



### DAY 6: El Calafate

El Calafate flanks the southern shore of Lago Argentino in the southwest part of Argentina's Santa Cruz Province. The town is near the edge of the Southern Patagonian Ice Field and one of the gateways to World Heritage Listed Parque Nacional Los Glaciares. The name El Calafate is derived from the calafate plant common in Patagonia. The town's main street, Avenida del Libertador General San Martín, is lined with restaurants, cafes, chocolate shops and souvenir shops.



### DAY 7: Perito Moreno with South Wall Cruise

This morning you will be collected from your hotel to venture into Los Glaciares National Park to see the world famous Perito Moreno Glacier. The glacier is more than two miles wide and averages 74m in height above the surface of the water of Lake Argentino. It is one of the very few glaciers in the world that continues to advance and if you are lucky you may see the glacier calving as large masses of ice break away from the glacier and collapse into the water. Enroute to the glacier, stop at the pier for a short boat trip to the south wall of the glacier. From the water level you get a feel for the size of this remarkable glacier - a true highlight of Patagonia. Reaching the Icebergs Channel, the boat will stop at a safe distance from the glacier, continuing to sail down all its front, allowing a spectacular view of the high wall of ice. On completion of the tour you will be taken to your hotel.



#### TRIP CODE

ARTSPGT

#### DURATION

8 Days

#### LOCATIONS

Argentina, Patagonia



# ARGENTINA - ARGENTINIAN PATAGONIA

DAY 8: Transfer to the airport for onward destination

You will be collected from your hotel at the appropriate time and transferred to the airport for your onward flight.



## TRIP CODE

ARTSPGT

## DURATION

8 Days

## LOCATIONS

Argentina, Patagonia



## INCLUSIONS & DETAILS

Accommodation	Hotels
Inclusions	Lodging including breakfast. Transfers and excursions in regular SIB basis as specified in itinerary. Entrance fee to Parque Nacional Los Glaciares (Perito Moreno Glacier, day 6).
Difficulty Rating	4 (average fitness and above)
Single Surcharge	Standard category from US\$770
Notes	This trip is only operational from 10th October until the 31st March.
Price Dependent upon	Season and availability.

## SUSTAINABILITY

Chimu Adventures undertakes a number of sustainability measures within its operations including:

- 1) Only using local guides and office staff to both maximise local employment opportunities and minimise carbon footprints. Local guides also ensure you benefit from the intimate knowledge, passion and culture of the country you're visiting.
- 2) Where possible, using locally owned and operated boutique hotels to maximise the return to the local community.
- 3) Chimu's "Pass it on" programme has provided funding to hundreds of local community projects in Latin America. Our aim is to empower local communities, helping them to develop

## ARGENTINA - ARGENTINIAN PATAGONIA

their own infrastructure for the future. Since 2006, we have been working with Kiva (a well-known Non-Governmental Organisation), providing hundreds of loans to local businesses all over South America.

4) In our pre tour information we provide a range of tips and advice on how to minimise your impact on both local environments and communities.

5) Chimu Adventures' offices also take a number of sustainability measures including carbon offsets for company vehicles and most staff travel. Chimu Adventure's internal processes are also structures to create a paperless office and to reduce waste. There are also internal programmes to help staff minimise their carbon footprint such as our staff bike purchase assistance plan which encourages office staff to commute to work via bicycle. Currently almost half of our office based staff commute to work via bicycle.

### TRIP CODE

ARTSPGT

### DURATION

8 Days

### LOCATIONS

Argentina, Patagonia

