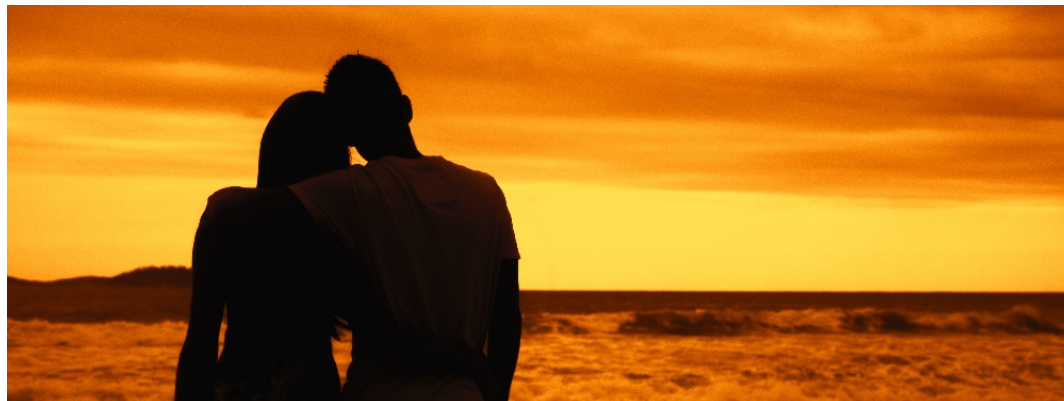


## BRAZIL - BRAZILIAN ROMANCE



### INTRODUCTION

Let Brazil's passion for life seduce and entice you. Surround yourself with gorgeous natural beauty, indescribably delicious cuisine, and the unmatched warmth and friendliness of the Brazilian people. Join us on this 12 day journey through some of the iconic highlights of Brazil including the exciting city of Rio de Janeiro and the magnificent and breathtaking Iguazu Falls and Iguazu Falls National Park, this itinerary also includes 3 nights in South America's biggest biodiversity star - the Pantanal. You've never smiled so big as you will on your Brazil honeymoon.

### ITINERARY

#### DAY 1: Arrival transfer in Rio de Janeiro

On arrival, please make your way through to the Arrivals Hall where our representative will be waiting for you to transfer you to your hotel. He/she will be holding a sign with your name on it. Please note this service is with a driver only. Please note, once you arrival at your hotel you will receive a welcome pack, which will provide you with all the useful information you will need about your trip in Brazil.



NO IMAGE  
AVAILABLE

#### TRIP CODE

BRTSBHM

#### DEPARTURE

Daily

#### DURATION

12 Days

#### LOCATIONS

Brazil



## BRAZIL - BRAZILIAN ROMANCE

### DAY 1: Rio de Janeiro

Known as the "Cidade Maravilhosa", or Marvellous City, Rio never fails to amaze with its sandy beaches, carefree lifestyle and unparalleled natural beauty. As the capital of Brazil until 1960, Rio is today one of the most culturally and economically prominent cities in the country, receiving more tourists than any other part of Brazil.



### DAY 2: Corcovado & Sugarloaf with Lunch

After an early pick up from your hotel, this tour makes its way to the bottom of Corcovado Hill, where we ascend the mountain by vehicle. Climbing 4km through the Tijuca Forest, the world's largest urban National Park, we will arrive at the statue of Christ the Redeemer. After taking in the panoramic views, continue to the Maracana Stadium. We also pass the Sambadrome and the Metropolitan Cathedral, before passing through the bohemian neighbourhood of Lapa and its famous arches en-route to Copacabana. Enjoy a traditional Brazilian BBQ lunch (beverages not included) before visiting the famous Sugarloaf Mountain with views across the entire city. After descending the mountain, you will be dropped off at your hotel. Please note this is a small group tour.



### DAY 3: Rio de Janeiro - Free Day

Today is free to enjoy the rhythm of this vibrant, bustling city. From spotting the "beautiful people" on the legendary beaches of Copacabana and Ipanema, to exploring the famous favelas on a tour there is always something to do in Rio.



### DAY 4: Travel from Rio to Buzios

This morning you will be collected from your hotel at the appropriate time for the scenic drive to Buzios. Please note this service is only to and from hotels and includes a driver only. The journey will take approximately 3.5 hours depending on traffic.



#### TRIP CODE

BRTSBHM

#### DEPARTURE

Daily

#### DURATION

12 Days

#### LOCATIONS

Brazil



## BRAZIL - BRAZILIAN ROMANCE

### DAY 4: Buzios

The beautiful seaside resort town of Buzios sits on a peninsula, surrounded by more than 20 stunning beaches and crystal clear water. Once a simple fishing village, it now boasts fine restaurants, bars, villas and boutiques. Buzios is a small and sophisticated paradise, combining rustic charm and incredible beauty with its narrow cobblestone streets and picturesque waterfront. The west coast offers calm, clear waters, whilst on the east, the waters are more suited to surfing and water sports.



NO IMAGE  
AVAILABLE

### DAY 5: Buzios Free Day

Enjoy this day at leisure to explore Buzios on your own. Relax in one of the beach lounges, spend the afternoon shopping in the boutique stores, or enjoy a delicious seafood meal at a beachfront restaurant.



NO IMAGE  
AVAILABLE

### DAY 6: Buzios Free Day

Enjoy this day at leisure to explore Buzios on your own. Relax in one of the beach lounges, spend the afternoon shopping in the boutique stores, or enjoy a delicious seafood meal at a beachfront restaurant.



NO IMAGE  
AVAILABLE

### DAY 7: Travel from Buzios to Rio

This morning you will be collected from your hotel at the appropriate time for the scenic drive back to Rio de Janeiro. Please note this service is only to and from hotels and includes a driver only. The journey will take approximately 3.5 hours depending on traffic.



NO IMAGE  
AVAILABLE

#### TRIP CODE

BRTSBHM

#### DEPARTURE

Daily

#### DURATION

12 Days

#### LOCATIONS

Brazil



# BRAZIL - BRAZILIAN ROMANCE

DAY 7: Arrival transfer to Refugio Caiman Ec lodge


Transfer from Campo Grande to Refugio Caiman Ec lodge - 4 hours.



DAY 7: Welcome to Refugio Caiman Ec lodge

On arrival at the lodge, you will be given time to settle in and learn more about the activities on offer. If arriving in the morning, lunch will be included followed by an afternoon activity, dinner and then a night activity. If arriving in the afternoon, dinner and a night activity will be included. After dinner there is the option to go nocturnal spotlighting. This provides the opportunity to observe the nocturnal wildlife of the Pantanal. You may see caiman, their eyes glowing red in the spotlights and night birds such as nightjars, owls and various herons.




TRIP CODE
BRTSBHM
DEPARTURE
Daily
DURATION
12 Days
LOCATIONS
Brazil


## BRAZIL - BRAZILIAN ROMANCE

### DAY 8: Activities at Refugio Caiman Lodge - Days 2 & 3

The next two days are spent relaxing at the lodge and enjoying morning and afternoon activities from the lodge, with nocturnal spotlighting after dinner each night. Morning activities start early, to take advantage of one of the best times of the day to observe wildlife. After returning to the lodge for lunch, there is time to relax in the heat of the day until temperatures cool down enough to venture out on an afternoon excursion, another good time of the day to observe wildlife and maybe a beautiful sunset. Please note that available activities will depend on the weather and local conditions. Possible activities include the following: Forest walking Safari: There are many trails surrounding the lodges that lead through the forest vegetation allowing you to observe the small animals that reside there and the varied flora. The Caiman Ecological Refuge alternates the trails used to minimize the impact on the environment. Caiman Walking Safari: This walk takes you through the area surrounding the main part of the ranch, including the Research Centres and the Environmental Interpretation Centre. The tour ends at Paizinho’s Bridge, a great place from which to observe caiman at close range, including the spectacled caiman. Photographic Safari: Travelling by specially adapted vehicles, this activity takes you further afield to more distant parts of the ranch, exposing you to contrasting vegetation and a wide variety of wildlife. Canadian Canoe Trip: Heading out in 3-seat Canadian canoes, this excursion provides a great opportunity to observe the many water birds, to listen to the sounds of the Pantanal and maybe experience a beautiful sunset from the water. Jeep Safari: Travelling by 4x4 vehicles adapted for wildlife safaris, this excursion provides closer contact with the wildlife and access to different parts of the Pantanal. The excursions and activities are accompanied by English-speaking guides, caimaners (guides specialized in the flora and fauna of the Pantanal), local field guides and residents with a deep knowledge and understanding of the Pantanal. After dinner at the lodge each evening, there is the option to join a nocturnal spotlighting safari.



TRIP CODE
BRTSBHM
DEPARTURE
Daily
DURATION
12 Days
LOCATIONS
Brazil


# BRAZIL - BRAZILIAN ROMANCE

DAY 10: Departure from Refugio Caiman to Bonito

This morning, after breakfast, depart from Refugio Caiman Ec lodge to Bonito. Please note that transfers are NOT included. If you arrived in the afternoon on Day 1 and were too late for lunch, lunch will be included today if you have an afternoon departure time.



DAY 10: Half Day Passeio Da Onca


This morning after an early breakfast, we check out of the lodge and begin the journey to Bonito. On the way we stop to visit the Boca de Onca’s waterfalls. Here we find a series of 11 waterfalls set along a four kilometre trail which culminates in the impressive 156 metre high Boca de Onca falls. We enjoy lunch at the park before continuing on to Olho d’ Agua Inn where we stay the night.



DAY 11: Half Day Blue Lake Cave Tour with Lunch

After departing from the hotel, the first stop will be at the Blue Lake cave. Considered the postcard picture of the city of Bonito, Blue Lake Cave is a contemplative and historical tour that begins with a walk of approx. 300m to the entrance of the cave, where you can truly start to have an idea of its beauty. Descending approx. 200m by a staircase dug in the earth, visitors will can see the lake that enchants with waters of intensely bluish tone and beautiful speleothems of thousands of years. Next stop is the incredibly inviting Rio da Prata, or River of Silver. This part of the tour starts with a walk of approx. 50 minutes along a gentle trail through a beautiful and unspoilt forest with rich flora, which coexist harmoniously with birds and other wildlife. Upon arrival at the at the source of Rio Olho d'Agua and equipping yourselves with snorkels, a new world will be before your eyes. You will float quietly in a huge crystal clear aquarium for approximately 2.200m. A curious feeling one gets is of flying in the midst of underwater plants and animals. After the tour, a tempting delicious typical lunch awaits hungry visitors. The facilities include a bar and restaurant, restrooms, hammocks and souvenir shop. The flotation equipment (clothing and boots, neoprene life vest, mask and snorkel) as well as lunch are included in the amount.




TRIP CODE
BRTSBHM
DEPARTURE
Daily
DURATION
12 Days
LOCATIONS
Brazil


# BRAZIL - BRAZILIAN ROMANCE

DAY 12: Transfer to the airport for onward destination

Transfer from Bonito to Aripport Campo Grande.



TRIP CODE
BRTSBHM
DEPARTURE
Daily
DURATION
12 Days
LOCATIONS
Brazil


INCLUSIONS & DETAILS	
Accommodation	Superior
Inclusions	<p>Accommodation with breakfast everyday, Tours as stated on the itinerary Meals as per the itinerary Airport transfers.</p> <p>Please note that the departure transfer from Refugio Caiman Ecolodge to Bonito is not included.</p>
Difficulty Rating	1 (easy)
Single Surcharge	Available upon request
Notes	Contact us for more details
Price Dependent upon	Season and availability

## SUSTAINABILITY

Chimu Adventures undertakes a number of sustainability measures within its operations including:

- 1) Only using local guides and office staff to both maximise local employment opportunities and minimise carbon footprints. Local guides also ensure you benefit from the intimate knowledge, passion and culture of the country you’re visiting.
- 2) Where possible, using locally owned and operated boutique hotels to maximise the return to the local community.
- 3) Chimu’s “Pass it on” programme has provided funding to hundreds of local community projects in Latin America. Our aim is to empower local communities, helping them to develop their own infrastructure for the future. Since 2006, we have been working with

## BRAZIL - BRAZILIAN ROMANCE

Kiva (a well-known Non-Governmental Organisation), providing hundreds of loans to local businesses all over South America.

4) In our pre tour information we provide a range of tips and advice on how to minimise your impact on both local environments and communities.

5) Chimu Adventures' offices also take a number of sustainability measures including carbon offsets for company vehicles and most staff travel. Chimu Adventure's internal processes are also structures to create a paperless office and to reduce waste. There are also internal programmes to help staff minimise their carbon footprint such as our staff bike purchase assistance plan which encourages office staff to commute to work via bicycle. Currently almost half of our office based staff commute to work via bicycle.

### TRIP CODE

BRTSBHM

### DEPARTURE

Daily

### DURATION

12 Days

### LOCATIONS

Brazil

