

**BRAZIL - CLASSIC BRAZIL**



**TRIP CODE**

BRTSCBN

**DURATION**

12 Days

**LOCATIONS**

Brazil



**INTRODUCTION**

This 12-day tour offers a taste of Brazilian living. Start at the spectacular Iguazu Falls then venture into the wildlife haven of the Pantanal before experiencing the rich African influences of Salvador. End your itinerary in the stunning city of Rio de Janeiro.

**ITINERARY**

**DAY 1: Arrival transfer in Iguazu**

On arrival, please make your way through to the Arrivals Hall where our representative will be waiting for you to transfer you to your hotel located on the Brazilian side of the falls. He/she will be holding a sign with your name on it. Should you not be able to locate them, please refer to the front of your itinerary for emergency contact details of our representative office.



**DAY 1: Iguazu**

The spectacular Iguazu Falls that straddle the Argentine-Brazil border, are made up of 275 individual waterfalls lining a 2.7km wide horseshoe-shaped gorge. The Falls are located where the Iguazu River cascades over the edge of the Paraná Plateau. The Falls can be viewed from both the Argentinian and the Brazilian sides, the Brazilian side offering a broader, panoramic view, with the Argentinian side offering a series of catwalks that allow you to experience the Falls from close range.



## BRAZIL - CLASSIC BRAZIL

### DAY 1: Iguazu Falls - Argentinean Side

After an early morning pick up from your hotel, we travel to the Argentinean side of the Iguazu Falls. Beginning at the visitor's centre, we take a ride on the Rainforest Ecological train before exploring the upper and lower circuit footbridges. The footbridges, which are raised off the jungle floor, provide panoramic views from above and below the falls. A visit to Devil's Gorge arguably the most spectacular falls, is one of the day's highlights.



### DAY 2: Half Day Tour - Iguazu Falls - Brazilian side

Today we see the falls from the Brazilian side of the border. After arriving at the visitor centre, we board buses for a tour of the park. Equipped with panoramic windows, the buses are designed to maximize your views of the falls, while the walkways and steps allow you to get up close to the spray. Views of the Floriana Falls, the Devil's Gorge Canyon and the Iguazu River are spectacular and are guaranteed to impress.



### DAY 3: Transfer to the airport for onward destination

You will be collected from your hotel at the appropriate time and transferred to the airport for your onward flight.



### DAY 3: Pousada Piuval: Arrival

Welcome to the Pantanal, a UK-sized montage of seasonally flooded savannahs and tropical forests, which expand across millions of hectares of central-western Brazil, eastern Bolivia and eastern Paraguay. With its extraordinarily concentrated and varied flora and fauna and diverse ecological sub-regions, the Pantanal stands as one of the world's great natural wonders. Today we meet you at Cuiaba airport, and travel to the lodge around 110km away. Built on a 7,000-hectare cattle farm, Piuval is surrounded by some of the most beautiful landscape in the Pantanal. On arrival you will have a chance to settle in before we set off on foot with our expert guides in search of wildlife. We return to the lodge to enjoy dinner.



#### TRIP CODE

BRTSCBN

#### DURATION

12 Days

#### LOCATIONS

Brazil



## BRAZIL - CLASSIC BRAZIL

### DAY 4: Pousada Piuval: Horseback riding

The lodge's surrounding waterways, grasslands and forests makes it ideal for wildlife spotting and this morning we set off on horseback to explore this vast terrain. We return to the lodge for lunch before boarding motorized boat for a river safari and a spot of piranha fishing. The pousada's pool bordered by lounges and hammocks hung invitingly under the trees provide you with the perfect place to relax in between each adventure. Dinner is served at the lodge.



### DAY 5: Pousada Piuval: Photographic Safari

This morning chose between a horse riding safari or boat trip before lunching at the lodge. This afternoon we head off in the jeeps for a photographic safari and after dinner this evening we set off for some alligator spotting.



### DAY 6: Pousada Piuval: Departure

We rise early and set off on foot to see the Pantanal at sunrise, one of the best times of day for wildlife spotting. We return to Cuiaba in time for your outgoing flight.



### DAY 6: Arrival transfer in Salvador

On arrival, please make your way through to the Arrivals Hall where our representative will be waiting for you to transfer you to your hotel. He/she will be holding a sign with your name on it. Should you not be able to locate them, please refer to the front of your itinerary for emergency contact details of our representative office.



#### TRIP CODE

BRTSCBN

#### DURATION

12 Days

#### LOCATIONS

Brazil



## BRAZIL - CLASSIC BRAZIL

### DAY 6: Salvador

Salvador, in Brazil's north eastern state of Bahia, was once the magnificent capital of Portugal's New World colony. It is known for its vibrant Afro-Brazilian culture, 17th and 18th century Portuguese colonial architecture and tropical coastline. The historic heart of the city is the Pelourinho neighbourhood where cobblestone alleys open onto large squares lined with ornate churches and colourful buildings. Most nights you will hear Olodum drummers pounding out powerful rhythms on the streets. The heritage of the descendants of African slaves is well preserved here, from music and religion to food and dance.



### DAY 7: Salvador - Panoramic City Tour

The Lower City Tour offers another perspective of the sprawling city, taking us to the quiet waters of the Itapagipe Peninsula where life moves at a slower pace than the bustling upper city. Fishermen fish from dugout canoes, locals collect shellfish at low tide, schooners lie at anchor, all protected by the famous Bonfim church, one of the most important churches of pilgrimage in Brazil and deeply syncretised with the Candomblé. We continue to the Monserrat district with its panoramic view of the city and on to the Mercado Modelo, a thriving market for local goods and souvenirs. This is also a great place to test your bargaining skills!



### DAY 8: Salvador - Free day

Today is a free day for you to explore Salvador de Bahía at your leisure.



#### TRIP CODE

BRTSCBN

#### DURATION

12 Days

#### LOCATIONS

Brazil



**BRAZIL - CLASSIC BRAZIL**

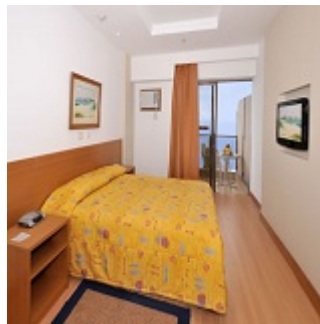
DAY 9: Transfer to the airport for onward destination

You will be collected from your hotel at the appropriate time and transferred to the airport for your onward flight.



DAY 9: Arrival transfer in Rio de Janeiro

On arrival, please make your way through to the Arrivals Hall where our representative will be waiting for you to transfer you to your hotel. This service includes a driver and local English speaking guide, who will provide you with any useful information needed for your stay. He/she will be holding a sign with your name on it. Should you not be able to locate them, please refer to the front of your itinerary for emergency contact details of our representative office.



DAY 9: Rio de Janeiro

Known as the "Cidade Maravilhosa", or Marvellous City, Rio never fails to amaze with its sandy beaches, carefree lifestyle and unparalleled natural beauty. As the capital of Brazil until 1960, Rio is today one of the most culturally and economically prominent cities in the country, receiving more tourists than any other part of Brazil.



<b>TRIP CODE</b>
BRTSCBN
<b>DURATION</b>
12 Days
<b>LOCATIONS</b>
Brazil

## BRAZIL - CLASSIC BRAZIL

### DAY 10: Corcovado & Sugarloaf with Lunch

After an early pick up from your hotel, this tour makes its way to the bottom of Corcovado Hill, where we ascend the mountain by vehicle. Climbing 4km through the Tijuca Forest, the world's largest urban National Park, we will arrive at the statue of Christ the Redeemer. After taking in the panoramic views, continue to the Maracana Stadium. We also pass the Sambadrome and the Metropolitan Cathedral, before passing through the bohemian neighbourhood of Lapa and its famous arches en-route to Copacabana. Enjoy a traditional Brazilian BBQ lunch (beverages not included) before visiting the famous Sugarloaf Mountain with views across the entire city. After descending the mountain, you will be dropped off at your hotel. Please note this is a small group tour.



#### TRIP CODE

BRTSCBN

#### DURATION

12 Days

#### LOCATIONS

Brazil



### DAY 11: Rio de Janeiro - Free Day

Today is free to enjoy the rhythm of this vibrant, bustling city. From spotting the "beautiful people" on the legendary beaches of Copacabana and Ipanema, to exploring the famous favelas on a tour there is always something to do in Rio.



### DAY 12: Transfer to the airport for onward destination

You will be collected from your hotel at the appropriate time and transferred to the airport for your onward flight.




## INCLUSIONS & DETAILS

#### Accommodation

Standard

## BRAZIL - CLASSIC BRAZIL

<b>Inclusions</b>	Guided tours and excursions Accommodation Ground transfers Transport Internal Flights Breakfasts Other meals where specified
<b>Difficulty Rating</b>	2 (average fitness required)
<b>Single Surcharge</b>	FROM US\$990 - Subject to season and availability, contact us for more details.
<b>Notes</b>	Contact us for more details.
<b>Price Dependent upon</b>	Season and availability

<b>TRIP CODE</b>
BRTSCBN
<b>DURATION</b>
12 Days
<b>LOCATIONS</b>
Brazil


## SUSTAINABILITY

Chimu Adventures undertakes a number of sustainability measures within its operations including:

- 1) Only using local guides and office staff to both maximise local employment opportunities and minimise carbon footprints. Local guides also ensure you benefit from the intimate knowledge, passion and culture of the country you're visiting.
- 2) Where possible, using locally owned and operated boutique hotels to maximise the return to the local community.
- 3) Chimu's "Pass it on" programme has provided funding to hundreds of local community projects in Latin America. Our aim is to empower local communities, helping them to develop their own infrastructure for the future. Since 2006, we have been working with Kiva (a well-known Non-Governmental Organisation), providing hundreds of loans to local businesses all over South America.
- 4) In our pre tour information we provide a range of tips and advice on how to minimise your impact on both local environments and communities.
- 5) Chimu Adventures' offices also take a number of sustainability measures including carbon offsets for company vehicles and most staff travel. Chimu Adventure's internal processes are also structured to create a paperless office and to reduce waste. There are also internal programmes to help staff minimise their carbon footprint such as our staff bike purchase assistance plan which encourages office staff to commute to work via bicycle. Currently almost half of our office based staff commute to work via bicycle.