

BRAZIL - PANTANAL



INTRODUCTION

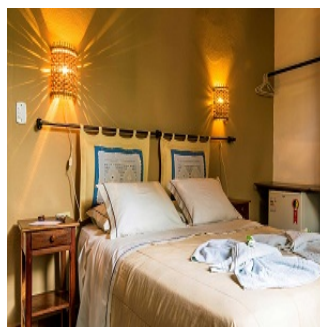
The Pantanal is the world's largest wetlands area. Often overshadowed by the Amazon Rainforest, the Pantanal is actually considered to be the world's densest flora and fauna ecosystem; and its wide open wetland spaces make it much easier to spot wildlife (especially during the dry season where animals are easily found at watering holes).

Please note that other durations are also available, with or without Bonito. The additional excursion to Bonito offers fantastic value and hence the reason why this is the most popular itinerary we have at this lodge.

ITINERARY

DAY 1: Arrival transfer in Pantanal

On arrival into Campo Grande airport, you will be met and transferred to your hotel in the Pantanal area.



TRIP CODE

BRTSPX5

DURATION

5 Days

LOCATIONS

Brazil



BRAZIL - PANTANAL

DAY 1: Private transfer from Campo Grande to Pantanal

Assistance at the airport of Campo Grande and private transfer to the Pousada Aguapé located in Pantanal of Aquidauana. The transfer with private car and local driver from Campo Grande to the Ranch/Pousada is almost 200km and takes 3 - 4 hours (conditions of the dirt road can vary). Depending on what time you arrive, you may be able to do a tour in the afternoon. This could be piranha fishing on the lake or the Aquidauana River that is located a few metres from the Pousada. The activity schedule will be organized at the ranch with your local guide.



DAY 2: Pantanal day tour with English speaking guide

Start the day with breakfast before beginning your daily activity. Boats are the best way to see the Aquidauana River and the beauty of the surrounding forest. This is the natural habitat of birds, mammals and reptiles that can be seen basking on the river banks. This tour takes 2 - 3 hours and you will be provided with a life jacket. During the tour, your local guide will turn off the boats engine and allow you to drift down stream with the river current so you can enjoy the sounds of nature. All of the boats are legal and have insurance. In the warmer mid part of the day, the time is yours to rest. Trekking begins after lunch - this hike goes through dense bush, open fields and forest. During this tour you can see the flora and fauna of the region, learning about their role and importance in the Pantanal ecosystem. It is a good opportunity to see the animals more closely. There are different routes that you can go on, ranging from an hour and a half to four hours. You can decide with your local guide how long you would like to walk.



DAY 3: Private Transfer Campo Grande to Bonito

Transfer from Hotel in Campo Grande to Bonito.



TRIP CODE

BRTSPX5

DURATION

5 Days

LOCATIONS

Brazil



BRAZIL - PANTANAL

DAY 3: Half Day Passeio Da Onca

This morning after an early breakfast, we check out of the lodge and begin the journey to Bonito. On the way we stop to visit the Boca de Onca's waterfalls. Here we find a series of 11 waterfalls set along a four kilometre trail which culminates in the impressive 156 metre high Boca de Onca falls. We enjoy lunch at the park before continuing on to Olho d' Agua Inn where we stay the night.



DAY 4: Half Day Blue Lake Cave Tour with Lunch

After departing from the hotel, the first stop will be at the Blue Lake cave. Considered the postcard picture of the city of Bonito, Blue Lake Cave is a contemplative and historical tour that begins with a walk of approx. 300m to the entrance of the cave, where you can truly start to have an idea of its beauty. Descending approx. 200m by a staircase dug in the earth, visitors will see the lake that enchants with waters of intensely bluish tone and beautiful speleothems of thousands of years. Next stop is the incredibly inviting Rio da Prata, or River of Silver. This part of the tour starts with a walk of approx. 50 minutes along a gentle trail through a beautiful and unspoilt forest with rich flora, which coexist harmoniously with birds and other wildlife. Upon arrival at the source of Rio Olho d'Agua and equipping yourselves with snorkels, a new world will be before your eyes. You will float quietly in a huge crystal clear aquarium for approximately 2.200m. A curious feeling one gets is of flying in the midst of underwater plants and animals. After the tour, a tempting delicious typical lunch awaits hungry visitors. The facilities include a bar and restaurant, restrooms, hammocks and souvenir shop. The flotation equipment (clothing and boots, neoprene life vest, mask and snorkel) as well as lunch are included in the amount.



DAY 5: Pantanal: Bonito Departure Day

This morning we say our goodbyes and make the return journey to Campo Grande in time for you to catch your outward flight.



TRIP CODE

BRTSPX5

DURATION

5 Days

LOCATIONS

Brazil



BRAZIL - PANTANAL

DAY 5: Transfer to the airport for onward destination

Transfer from Bonito to Aripport Campo Grande.



TRIP CODE

BRTSPX5

DURATION

5 Days

LOCATIONS

Brazil



INCLUSIONS & DETAILS

Accommodation Comfortable Jungle Lodge

Inclusions All expeditions from the lodge
Airport transfers to the lodge
Accommodation with breakfast everyday
All meals

Difficulty Rating 2 (light adventure)

Single Surcharge FROM US\$795 - Subject to season and availability, contact us for more details.

Notes Please note that other durations are also available, with or without Bonito.
The additional excursion to Bonito offers fantastic value and hence the reason why this is the most popular itinerary we have at this lodge.

Price Dependent upon Season and availability.

SUSTAINABILITY

Chimu Adventures undertakes a number of sustainability measures within its operations including:

- 1) Only using local guides and office staff to both maximise local employment opportunities and minimise carbon footprints. Local guides also ensure you benefit from the intimate knowledge, passion and culture of the country you're visiting.
- 2) Where possible, using locally owned and operated boutique hotels to maximise the return to the local community.
- 3) Chimu's "Pass it on" programme has provided funding to hundreds of local community projects in Latin America. Our aim is to empower local communities, helping them to develop their own infrastructure for the future. Since 2006, we have been working with Kiva (a well-known Non-Governmental Organisation), providing hundreds of loans to local

BRAZIL - PANTANAL

businesses all over South America.

4) In our pre tour information we provide a range of tips and advice on how to minimise your impact on both local environments and communities.

5) Chimu Adventures' offices also take a number of sustainability measures including carbon offsets for company vehicles and most staff travel. Chimu Adventure's internal processes are also structures to create a paperless office and to reduce waste. There are also internal programmes to help staff minimise their carbon footprint such as our staff bike purchase assistance plan which encourages office staff to commute to work via bicycle. Currently almost half of our office based staff commute to work via bicycle.

TRIP CODE

BRTSPX5

DURATION

5 Days

LOCATIONS

Brazil

