

CHILE - CHILE TOP TO TAIL



INTRODUCTION

Choose this Tailor-Made itinerary or customise to create your own unique journey.
 Departs daily to suit your travel plans. Price based on Standard accommodation.
 Superior or Deluxe also available.

Experience the length of Chile, starting in its capital, Santiago. From the capital, take a trip to Atacama Desert and spend a few days exploring the area. Next, you will travel to the lake district with a few days to spend in Puerto Varas and Puerto Montt. Head to Chiloe Island and visit the classic city of Ancud before arriving in Puerto Natales, your gateway to spectacular Patagonia. After taking some time out in the mountain air, travel back to Santiago for your final days in Chile.

ITINERARY

DAY 1: Arrival transfer in Santiago

On arrival at Santiago Airport, please make your way through Customs and Immigration and only exit from the green doors marked 'Meeting Point'. Our representative will be holding a sign with your name on it and waiting for you outside this exit. Please only make contact with our representative. This service includes a driver and local English speaking guide who will provide you with any useful information needed for your stay.



TRIP CODE
CLTSCTT
DEPARTURE
Daily October to April
DURATION
13 Days
LOCATIONS
Chile, Patagonia

CHILE - CHILE TOP TO TAIL

DAY 1: Santiago de Chile

Santiago, Chile's capital and largest city, lies in a valley surrounded by the snow-capped mountains of the Andes and the Chilean Coastal Range. Founded in 1541, Santiago has been Chile's capital since colonial times. It is a vibrant and cosmopolitan city and although it features many colonial buildings, it has grown into a modern metropolis and the cultural centre of the country.



DAY 2: Transfer to the airport for onward destination

You will be collected from your hotel at the appropriate time and transferred to the airport for your onward flight. This service includes a Spanish speaking driver only.



DAY 2: Arrival Hotel Alto Atacama

Welcome to the Atacama Desert. Upon arrival in Calama, you will be transferred to San Pedro de Atacama (1.5 hours, shared with other hotel guests). Dinner will be served at Alto Atacama hotel. During the evening, the guides will suggest optional activities available the following day. Alto Atacama is a village hotel at the base of the Cordillera de la Sal (Salt Mountains), near the ancient ruins of Pukara de Quitor and 3km from the famous oasis of San Pedro de Atacama. Combining raw nature with comfort and convenience, Alto Atacama offers the perfect refuge to rejuvenate the body and soul.



TRIP CODE

CLTSCTT

DEPARTURE

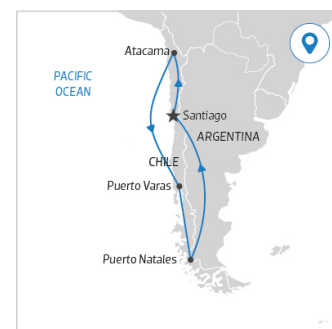
Daily October to April

DURATION

13 Days

LOCATIONS

Chile, Patagonia



CHILE - CHILE TOP TO TAIL

DAY 3: Explore the Atacama Desert

Alto Atacama has created a program so you can enjoy as much of the local area as you want, in any way you want. There is something for everyone, from visiting museums to volcano climbing. The excursions are designed for people who love nature and extraordinary landscapes, but the vast majority do not require any special physical training or abilities. All are classified by type (on foot, vehicle or bicycle), length (half or full day) and difficulty. Each night, meet with the guides in the bar to discuss options for the following day. There are eight choices per day out of 23 total outings.



NO IMAGE
AVAILABLE

DAY 5: Departure Hotel Alto Atacama

After breakfast, you will be transfered to Calama Airport for your onward flight.



NO IMAGE
AVAILABLE

DAY 5: Arrival transfer in Puerto Varas

On arrival, please make your way through to the Arrivals Hall where our representative will be waiting for you to transfer you to your hotel. He/she will be holding a sign with your name on it. This service includes a driver and local English speaking guide who will provide you with any useful information needed for your stay.



NO IMAGE
AVAILABLE

DAY 5: Puerto Varas

Puerto Varas and Puerto Montt lie at the southern end of the Lake District under the shadow of the snow-capped Osorno and Calbuco volcanoes. Puerto Varas sits on the shores of Lake Llanquihue and is known as "The city of Roses". Puerto Montt is 20kms from Puerto Varas on the Seno de Reloncaví Bay, the capital of the Lake District, and the last significant outpost of the region.



NO IMAGE
AVAILABLE

TRIP CODE

CLTSCTT

DEPARTURE

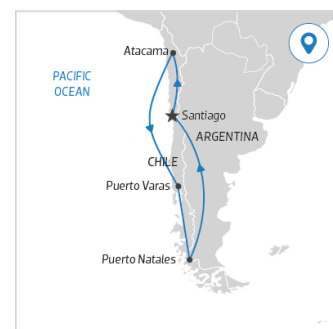
Daily October to April

DURATION

13 Days

LOCATIONS

Chile, Patagonia



CHILE - CHILE TOP TO TAIL

DAY 5: Puerto Montt & Varas City Tour

You will be collected from your hotel for a sightseeing tour of Puerto Montt and Puerto Varas. Begin the tour in the capital of the region, Puerto Montt, visiting the Main Square, the commercial and harbour zone of Angelmó, famous in Chile because it has many hand crafts and gifts shops, and of course the City Central Market, where we can see how it works one of the principal economic activities, fishing and seafood. Continue down the Pan-American Highway to the charming town of Puerto Varas, known as "The City of the Roses", located on the shore of Llanquihue Lake. Here you will discover the picturesque streets and visit various sites of interest including the Main Square, the Church of the Sacred Heart of Jesus and the Municipal Casino. On completion of the tour you will be taken to your hotel. Please note this is a private tour.



DAY 6: Osorno Volcano & Petrohue Waterfalls

Today we visit the iconic Osorno Volcano which stands on the south eastern shore of Lake Llanquihue towering over Todos los Santos Lake. Despite its low altitude, the upper slopes of the volcano are covered in glaciers and the views from the top are truly spectacular. There is plenty of time to explore the mountain and the Osorno volcano ski centre, located at 1200 meters above sea level. We return to your hotel late in the afternoon. Please note a small snack is included with this service.



DAY 7: Full Day Private Chiloe Island Tour

This morning you will be collected from your hotel for your visit to Isla Grande de Chiloé (The Big Island of Chiloé), the second-largest island in South America. Isolated from the main land until the 19th century it has a distinct culture steeped in mysticism. Visit the city of Ancud with its classic chilota architecture and iconic wooden churches and stop at the regional market with its colourful array of products. We then head for the Huaiquen Hill viewpoint to take in the incredible vista of Chacao Channel before returning by ferry to the mainland. On completion of the tour you will be taken to your hotel. Please note this is a private tour with local english speaking guide.



TRIP CODE

CLTSCTT

DEPARTURE

Daily October to April

DURATION

13 Days

LOCATIONS

Chile, Patagonia



CHILE - CHILE TOP TO TAIL

DAY 8: Transfer to the airport for onward destination

You will be collected from your hotel at the appropriate time and transferred to the airport for your onward flight. Please note this service includes a local English speaking guide.



DAY 8: Arrival in Puerto Natales

On arrival at Punta Arenas or Puerto Natales airport you will be met and transferred to the Singular Patagonia hotel at the edge of the Fjord of Last Hope. The afternoon is at leisure to relax at the hotel, maybe enjoy the spa facilities or explore the grounds surrounding the hotel. In the evening you will be briefed on the excursion options for the following day. The Singular Patagonia features 57 spacious guest rooms that look out over the fjord and the mountains, cosy lounge areas, an eco-spa with indoor and outdoor pools, sauna and steam room, a restaurant and a staff dedicated to personalized service. The restaurant serves dishes based on traditional Patagonian recipes, made using locally grown ingredients. A range of excursions and activities are offered including horseback riding, trekking, cycling, kayaking and fly fishing.



TRIP CODE

CLTSCTT

DEPARTURE

Daily October to April

DURATION

13 Days

LOCATIONS

Chile, Patagonia



CHILE - CHILE TOP TO TAIL

DAY 9: Patagonia Activities

Two days to explore the breathtaking landscapes of Patagonia - an untamed wilderness of stunning beauty with windswept pampas, snow-capped peaks, glaciers, blue-tinged icebergs, fjords and lakes. Friendly, experienced and knowledgeable guides lead the way, and give you an in-depth, insider look at Patagonia. There are over 20 different Patagonia excursions available ranging from leisurely day trips to activities that will excite the thrill-seeker. For a leisurely option, join us as we navigate our way through meandering, mountain-fringed fjords, wander through wetlands on a bird-watching trek or discover the historic pioneer town of Puerto Natales. Explore caverns where the prehistoric milodon once lived or head out by horseback or mountain bike along the banks of Laguna Sofia. For a more challenging option you may like to kayak through the Last Hope Sound or take a full-day trek in the stunningly beautiful Torres del Paine National Park with its iconic towers of granite. Basic Level Options• Trekking Sierra Baguales - Private Reserve• Discovering Torres Del Paine National Park• Sailing around the Patagonia Fjords: Serrano and Balmaceda Glaciers• Puerto Natales, Land of Pioneers• Trekking to the Milodon Caves• Horseback Riding to Puerto Consuelo• Cycling around Puerto Natales Medium Level Options• The Water Track• Cycling around Laguna Sofia• Trekking and watching Andean condors• Horse Riding around Laguna Sofia • Kayak Puerto Bories to Puerto Natales• Kayak Fjord Eberhard to Villa Luisa• Kayak harbour tour• Fly fishing Patagonia Difficult Level Options• Tenerife 360° - Horseback Riding or Trekking• Trekking to the Base of Torres Del Paine• Horseback Riding - Tres Paso



TRIP CODE

CLTSCTT

DEPARTURE

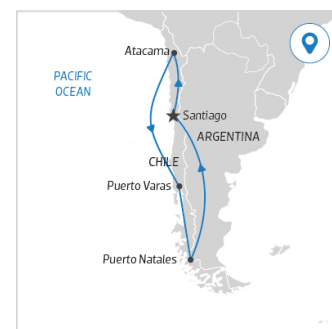
Daily October to April

DURATION

13 Days

LOCATIONS

Chile, Patagonia



CHILE - CHILE TOP TO TAIL

DAY 10: Patagonia Activities

Two days to explore the breathtaking landscapes of Patagonia - an untamed wilderness of stunning beauty with windswept pampas, snow-capped peaks, glaciers, blue-tinged icebergs, fjords and lakes. Friendly, experienced and knowledgeable guides lead the way, and give you an in-depth, insider look at Patagonia. There are over 20 different Patagonia excursions available ranging from leisurely day trips to activities that will excite the thrill-seeker. For a leisurely option, join us as we navigate our way through meandering, mountain-fringed fjords, wander through wetlands on a bird-watching trek or discover the historic pioneer town of Puerto Natales. Explore caverns where the prehistoric milodon once lived or head out by horseback or mountain bike along the banks of Laguna Sofia. For a more challenging option you may like to kayak through the Last Hope Sound or take a full-day trek in the stunningly beautiful Torres del Paine National Park with its iconic towers of granite. Basic Level Options• Trekking Sierra Baguales - Private Reserve• Discovering Torres Del Paine National Park• Sailing around the Patagonia Fjords: Serrano and Balmaceda Glaciers• Puerto Natales, Land of Pioneers• Trekking to the Milodon Caves• Horseback Riding to Puerto Consuelo• Cycling around Puerto Natales Medium Level Options• The Water Track• Cycling around Laguna Sofia• Trekking and watching Andean condors• Horse Riding around Laguna Sofia • Kayak Puerto Bories to Puerto Natales• Kayak Fjord Eberhard to Villa Luisa• Kayak harbour tour• Fly fishing Patagonia Difficult Level Options• Tenerife 360° - Horseback Riding or Trekking• Trekking to the Base of Torres Del Paine• Horseback Riding - Tres Paso



DAY 11: Departure Day

This morning after breakfast you will be transferred from the Singular Patagonia to Punta Arenas Airport in time to check in for your onward flight. Please note this journey will take approximately five hours.



TRIP CODE

CLTSCTT

DEPARTURE

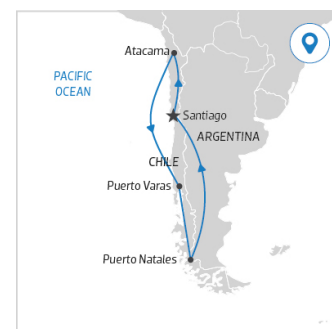
Daily October to April

DURATION

13 Days

LOCATIONS

Chile, Patagonia



CHILE - CHILE TOP TO TAIL

DAY 11: Arrival transfer in Santiago

On arrival at Santiago Airport, please make your way through Customs and Immigration and only exit from the green doors marked 'Meeting Point'. Our representative will be holding a sign with your name on it and waiting for you outside this exit. Please only make contact with our representative. This service includes a driver and local English speaking guide who will provide you with any useful information needed for your stay.



NO IMAGE
AVAILABLE

DAY 12: Full Day Private Casablanca Wine Route

This morning you will be collected from your hotel to visit the Casablanca Valley, the second wine valley closest to the capital. This is one of the most important wine-producing valleys. Unique and important due to its weather conditions, specially the shelter offered by the valley and the sea breeze, allow the production of white premium Chilean wines. We will visit three of the most relevant vineyards in Casablanca, the visit includes the presence of a specialist to guide our tour, explaining in detail the operation of the processing plants, wine cellars, and the qualities of the different varieties of fine wines we will be able to taste. On completion of the tour you will be taken to your hotel. Please note this is a private tour with local english speaking guide.



NO IMAGE
AVAILABLE

DAY 13: Transfer to the airport for onward destination

You will be collected from your hotel at the appropriate time and transferred to the airport for your onward flight. This service includes a Spanish speaking driver only.



NO IMAGE
AVAILABLE

TRIP CODE

CLTSCTT

DEPARTURE

Daily October to April

DURATION

13 Days

LOCATIONS

Chile, Patagonia



INCLUSIONS & DETAILS

Accommodation

Hotel and lodge accommodation

CHILE - CHILE TOP TO TAIL

Inclusions	Airport transfers Accommodation with breakfast Internal Flights Tours as detailed in itinerary Other meals where stated
	EXCLUSIONS: Personal Expenses Visa and reciprocity fees (where applicable) International flights Gratuities for staff/drivers Any items not mentioned as included
Difficulty Rating	3 Light Adventure (High altitude in some areas)
Single Surcharge	Contact us for details.
Notes	This itinerary only available between October to April due to Patagonia season. This itinerary can be done in the reverse. Contact us for more details.
Price Dependent upon	Season and Availability

SUSTAINABILITY

Being environmentally accountable is a crucial part of our organisation. Chimu is currently striving towards using less paper, taking several initiatives to do so and tracking our progress along the way. Our goal: A paperless organisation. For this reason, all information given to you will be sent electronically. We encourage those who choose to travel with us to support our aspirations and actions and ask that you reconsider printing out documentation. To view these documents, you can download them to your iPad or portable computer before and during your trip.

Chimu is passionate and dedicated to sustainability measures and understands the crucial part sustainability plays within the tourism industry.

We use local guides and office staff to both maximise local employment opportunities and minimise carbon footprint. Local guides also ensure you benefit from the intimate knowledge, passion and culture of the country you're visiting. Our guides are all highly qualified (most with university degrees) or equip with many years of experience and are paid above the standard wage. Whether it be our knowledgeable local guides, locally produced meals or the transport on tour, we do not use imported goods when local products are available. We aim to minimise our impact on the environment and give as much back as possible to the communities we work in.

On this trip you will stay at the Alto Atacama Desert Lodge & Spa. The lodge encourages a unique philosophy where culture, nature and architecture

TRIP CODE

CLTSCTT

DEPARTURE

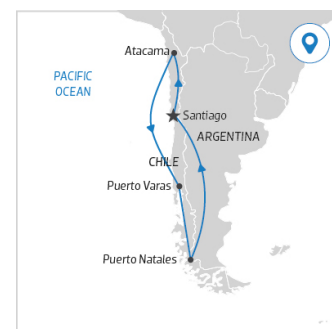
Daily October to April

DURATION

13 Days

LOCATIONS

Chile, Patagonia



CHILE - CHILE TOP TO TAIL

combine to provide guests with fantastic experiences and quality. Aesthetically, the architectural design of the lodge is entirely made by local craftsmanship that utilises architectural design to reduce the need for air conditioning. Similarly, solar powers and water treatment facilities encourage less wastage and energy consumption. Inputs and amenities are all provided by local materials and construction projects are carried out by local craftsmen, ensuring profits are redistributed to local communities. While visiting the many national parks, heritage sites, museums and landmarks our travellers are encouraged to explore remain culturally aware and sensitive. We further encourage you to buy appropriate souvenirs and discourage the buying of anything wrongfully made or taken from the environment i.e. shells and endangered species products. Information on how you can be environmentally conscious, and travel responsibly will be made available in our Travellers Guides and provided during your travels by guides and staff.

For more information on our sustainability policies, including how we are striving towards being a paperless organisation, click [HERE](#)

TRIP CODE

CLTSCTT

DEPARTURE

Daily October to April

DURATION

13 Days

LOCATIONS

Chile, Patagonia

