

SOUTH AMERICA - LA SELVA AMAZON ECOLOGDE



INTRODUCTION

A stay at the luxurious La Selva Eco lodge is an experience that will be banked amongst your life-time highlights. Tastefully appointed, spacious and incredibly comfortable, this ecolodge is nestled amongst virgin Amazonian rainforest in Ecuador, home to the most diverse set of species on the planet. Your multi day stay is an adventure from the very beginning as you are transferred from the high altitudes of Quito down into the the Amazon basin and deep into the rainforest, to a secluded lake and the comfort of La Selva lodge. You'll be greeted by friendly and knowledgeable staff who will look after you for the entirety of your stay.

There are a multitude of trails around the lake on which your guides will take you to spot a plethora of local wildlife, be sure to look for the smaller creatures as well as the large as they are all fascinating in their own way. You'll also spend time on canoes exploring the lake and surrounds, you'll climb to the top of the canopy to spot some of the many exotic Amazonian birds and visit the local village to learn about life in the lungs of our planet, the Amazon.

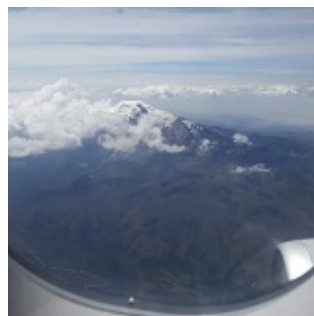
The food at La Selva is second to none, created from local produce, the chef's stop at nothing to showcase their talents and there's nothing better after a day exploring the Amazon than to kick back with a cocktail and marvel at the sight before you, as the lodge offers uninterrupted views of pure, raw, incredible nature.

This lodge stay is family friendly read about it [here](#).

ITINERARY

DAY 1: Depart from Quito to the lodge

In due time please board your flight from Quito to Coca.



TRIP CODE

ECTSLSV4

DEPARTURE

Daily (except sundays)

DURATION

4 Days

LOCATIONS

Ecuador Jungle



SOUTH AMERICA - LA SELVA AMAZON ECOLOGE

TRIP CODE

ECTSLSV4

DEPARTURE

Daily (except sundays)

DURATION

4 Days

LOCATIONS

Ecuador Jungle



SOUTH AMERICA - LA SELVA AMAZON ECOLOGE

DAY 1: Welcome to the Amazon

At Quito International Airport you will be met by La Selva representative in the National departure area in order to assist you with the check-in process and give you a short briefing about the journey. After a 30 minute commercial flight to Puerto Francisco de Orellana "El Coca", our representative will transfer you by private transportation to the city's main dock at the Napo River. One of our naturalists is going to be there, and is going to describe to you with detail what is going to happen the next three hours. Our representative will provide you a box lunch, and a water bottle, and for those that want a cold beer. An amazing fluvial journey of approximately two and a half hours in a motorized canoe will be the beginning of a great experience in the tropical rainforest. At the end of the motorized canoe ride, you will be dropped off at La Selva's main dock and your first close encounter with the rain forest begins. After using the facilities and putting mosquito repellent on, a short 3 minute walk will lead you to a creek where a small canoe will take you on a fantastic 30 minutes paddle canoe ride along a narrow creek that connects with Garzacocha Lagoon in order to reach La Selva lodge. During this part of your trip you will have chances of finding wildlife with the help of the naturalist in charge of the transfer. Do not forget that the only thing you must take care of is your carry-on and camera equipment. Your other luggage will be transported by our lodge's staff. The resident manager will greet you with a delicious juice, snacks and a short briefing with general information about the lodge.

INTRODUCTION TO THE RAIN FOREST: One of our naturalist guides is going to give you basic information about the tropical rain forest, Amazonia and the operation area of La Selva Lodge. The idea is to begin the activities with some background information about the amazing place that you have just arrived. **MATAPALO TRAIL:** This trail was named after the Spanish name of the famous Strangler fig (*Ficus* sp) one of many remarkable trees that you will find during this short introductory walk. We also see a majestic Mahogany tree that has been in the area for more than 400 years. Here your native and naturalist guides will start to share with you part of their knowledge about flora and fauna of the tropical rain forest. Because of the time of the day, you will enjoy of the most amazing light and the transition of the activity between diurnal and nocturnal creatures. **SNACKS:** At the bar you will find snacks that you can enjoy with a cocktail prepared by one of our bar tenders. Cocktail is not included. 19H30 - Dinner



TRIP CODE

ECTSLSV4

DEPARTURE

Daily (except Sundays)

DURATION

4 Days

LOCATIONS

Ecuador Jungle



SOUTH AMERICA - LA SELVA AMAZON ECOLOGE

DAY 2: Discover Amazon Trails

TORRE TUCANETA OR MANDI FOREST: After a 20 minutes' walk, you reach the tower. This amazing construction will allow you to be at 120 feet above the forest floor, and enjoy of the most amazing scenery of the canopy of the tropical rain forest. With the help of a spotting telescope your guides will show to you the colorful birds from the canopy including toucans, tanagers and parrots and with luck, the famous howler monkeys or a sloth. In the way back to the lodge you make a hike that is going to take you around 2 hours. During this time our native guide is going to show you some of the medicinal plants that they still use and the naturalist will provide information about ecology and natural history. There is the option to visit the beautiful lagoon of Mandi Cocha. After one hour and a half of walking we reach this lagoon where we can have an example of an Igapo Forest, which is the temporary flooded forest by black water. Here we might see different species of birds and some of our guest with extra luck might encounter the very elusive giant otters. **CHARAPA TRAIL:** This trail lasting one and a half hours, starts at the back of the lodge and ends on the edge of the lake. It's a wonderful loop that begins with a walk, returning to the lodge by canoe. Along the way we will try to sight different groups of mammals, monkeys and birds that in the afternoon hours get close to the lakeshore to look for food. Apart from a clear afternoon, you can also enjoy a beautiful sunset from the canoe. **NIGHT CANOE RIDE:** With the help of a spotlight, your guides will take you in a paddle canoe around the lagoon looking for caimans, boas, bats, owls, night mammals and more nocturnal wildlife. If the sky is clear, we might have the chance to do some stargazing. Dinner



TRIP CODE

ECTSLSV4

DEPARTURE

Daily (except sundays)

DURATION

4 Days

LOCATIONS

Ecuador Jungle



SOUTH AMERICA - LA SELVA AMAZON ECOLOGE

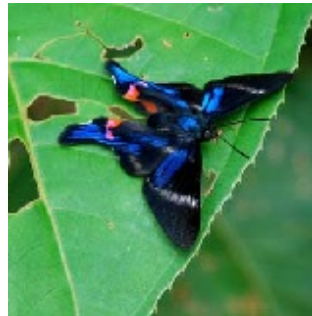
DAY 3: Discover Amazon Trails


PARROT CLAY LICK AND MANDI WASI: A 30 minute canoe ride plus a will head you back to the Napo River. A motorized canoe ride lasting 10 minutes will let you enjoy one of the most amazing displays of the wild world. Hundreds of parrots and parakeets will approach the treetops and later will come down to a clay bank to eat this soil rich in minerals. It is essential to have binoculars to enjoy it. Keep on mind that this is nature, so we cannot guarantee that they will always be there. Once you identify the different species of parrots and parakeets, your naturalist guide will provide a lot of interesting information about this spectacular behavior. The motorized canoe ride will continue for approximately 30 more minutes of bird watching along the river banks. It has been a wonderful morning, full of parrots, parakeets and other birds. Now it is time to enjoy a **CULTURAL ACTIVITY**. An Amazonian Kichua woman will receive you on their community center to explain to you about the life of the kichuas in Amazonia. A visit to the garden "chacra" followed by a visit to the house is going to show you that part of the Amazonia that you do not find on the maps: the Amazon people. Here you have the chance to buy handicraft. Motorized canoe ride, walk and a paddle canoe ride will lead you back to the lodge.

GARZA COCHA LAGOON AND CEIBA: This lagoon is one of the most beautiful of Ecuadorian Amazonia. During this trip is when we have more chances of spotting different species of monkeys and birds. Sometimes, huge groups of squirrel monkeys join families of capuchin monkeys to look for food. Howler monkeys also like to spend the late afternoon around the lagoon, and with a little luck we might see the famous pigmy marmoset which is the smallest monkey in the world. We have 7 primate species at la Selva Lodge. The hoatzin is easy to find. This is a famous bird with a very special look and very strange adaptations. Toucans might fly overhead and many other species of birds.

NOCTURNAL WALK: We give you the chance to enjoy of the creatures, and sounds of the forest at night. Sometimes we can see amazing things during this activity. Make sure that you bring a flashlight with extra batteries for this fantastic experience.

DEPARTURE BRIEFING: Our manager will provide you all the necessary information about your departure procedure for the next morning.



TRIP CODE
ECTSLSV4
DEPARTURE
Daily (except sundays)
DURATION
4 Days
LOCATIONS
Ecuador Jungle


SOUTH AMERICA - LA SELVA AMAZON ECOLOGDE

DAY 4: Departure Day

In accordance with your last night briefing, you will have an early wake up call, breakfast and departure from the lodge. The lodge staff will assist you with your checked luggage. Motorized canoe ride upstream to go back to Coca, where our representative will take you to the airport to help you with your checked luggage and boarding passes.



INCLUSIONS & DETAILS

Accommodation Luxury Ecolodge

Inclusions

Private airport transfers
Transfers + transportation in the Amazon
Accommodation with all meals
Guided excursions
Bilingual naturalist guide
Rain Poncho and Rubber Boots will be provided during your stay at the Lodge

Exclusions
International flights
Personal expenses
Visa and reciprocity fees (if applicable)
Beverages
Any items not mentioned as included

Difficulty Rating 2 (light adventure)

Single Surcharge Available upon request, contact us for more details.

Notes

All entrance fees are subject to change without prior notice.
This is a Tailor-Made itinerary which can be customised to create your own unique journey. Contact us to discuss your travel plans.

Price Dependent upon Season and Availability

TRIP CODE

ECTSLSV4

DEPARTURE

Daily (except sundays)

DURATION

4 Days

LOCATIONS

Ecuador Jungle



SUSTAINABILITY

Being environmentally accountable is a crucial part of our organisation. Chimu is currently striving towards using less paper, taking several initiatives to do so and tracking our progress along the way. Our goal: A paperless organisation. For this reason, all information given to you will be sent electronically. We encourage those who choose to travel with us to support our aspirations and actions and ask that you reconsider printing

SOUTH AMERICA - LA SELVA AMAZON ECOLOGE

out documentation. To view these documents, you can download them to your iPad or portable computer before and during your trip.

Chimu is passionate and dedicated to sustainability measures and understands the crucial part sustainability plays within the tourism industry.

We use local guides and office staff to both maximise local employment opportunities and minimise carbon footprint. Local guides also ensure you benefit from the intimate knowledge, passion and culture of the country you're visiting. Our guides are all highly qualified (most with university degrees) or equip with many years of experience and are paid above the standard wage. Whether it be our knowledgeable local guides, locally produced meals or the transport on tour, we do not use imported goods when local products are available. We aim to minimise our impact on the environment and give as much back as possible to the communities we work in.

La Selva has a strong environmental commitment. The lodge does not rely on air conditioning rather using natural ventilation, it uses waste water systems and all local produce and staff are employed. While visiting the many national parks, heritage sites, museums and landmarks our travellers are encouraged to explore remain culturally aware and sensitive. We further encourage you to buy appropriate souvenirs and discourage the buying of anything wrongfully made or taken from the environment i.e. shells and endangered species products. Information on how you can be environmentally conscious, and travel responsibly will be made available in our Travellers Guides and provided during your travels by guides and staff.

For more information on our sustainability policies, including how we are striving towards being a paperless organisation, click [HERE](#)

TRIP CODE

ECTSLSV4

DEPARTURE

Daily (except sundays)

DURATION

4 Days

LOCATIONS

Ecuador Jungle

