

SOUTH AMERICA - MY PASSION



INTRODUCTION

Flightless Cormorants, Flamingos (3 possible sites), Mangrove Finch, Medium Tree Finch, fur seals sleeping that you can approach closely, more human history (Wittmer's Cave on Floreana, Post Office Barrel, ancient mariner graffiti, salt mine ruins), possible giant tortoises in the wild, greater variety of lava flows, younger islands, giant uplifted coral beds, more Brown Noddy Terns, higher likelihood of seeing marine iguanas feeding, a big variety of beaches, higher likelihood of whales and dolphins, possible giant sunfish... Enjoy all this and much more on while cruising the West side of the Galapagos Islands on board the MY Passion.

ITINERARY

TRIP CODE

ECTSP8W

DEPARTURE

Saturdays

DURATION

8 Days

LOCATIONS

Ecuador, Galapagos
Islands



SOUTH AMERICA - MY PASSION

DAY 1: Arrive Napo Wildlife Center

Departing from Quito, a 30 minute flight to Coca will bring you over the eastern Andes mountain range. After landing during the mid-morning, a 5 min transfer will take you to “La Mision” Port, where you will embark on a comfortable covered motor-boat. Here we will ride along the Napo River for about 2 hours while enjoying a boxed lunch and coffee, which is provided en route. Along the way, you will have opportunities to spot birds like herons, kingfishers, and others. After arriving at Napo Wildlife Center’s entry dock, we disembark for a short break and to visit the restroom. Next, we take you on a majestic and peaceful 2 hour paddle canoe ride surrounded by trees and wildlife, paddling along a narrow creek that connects to the lake where the lodge is located. There will be chances to see some species of monkeys as well as large birds like toucans, parrots, or even macaws. A late afternoon arrival to Napo Wildlife Center with an overwhelming view of the Añangu Lake will be accompanied by a welcome drink followed by a briefing from the local manager. *Please note: This local flight has a luggage restriction of one 8kg cabin baggage and one 23kg checked baggage.



TRIP CODE

ECTSP8W

DEPARTURE

Saturdays

DURATION

8 Days

LOCATIONS

Ecuador, Galapagos
Islands



SOUTH AMERICA - MY PASSION

DAY 2: Macaw Clay Lick

Napo Wildlife Centre have a set of activities where you can choose from onsite, designed and suggested by the tour guide depending on the conditions and group preference. Below is a suggested itinerary for the day: Wake up for an early breakfast and an early start to reach the most accessible parrot clay licks in Ecuador, about 1 hour away from the lodge. Guests reach this destination just before parrot activity kicks off at the clay lick between 7:30 to 8:30am to ensure the best viewing experience. A total of 11 species of parrots, parakeets, and macaws can be seen on a daily basis. Many other animals also visit on a less frequent basis. Later, hike along a forest trail to visit the Kichwa Community of Añangu and share time with a family on one of their many activities. Enjoy lunch at Napo Cultural Centre, where you share with people of the Kichwa community. Then return to the creek and hike through a Terra Firme Forest for about 30 minutes until we arrive at the second parrot clay lick. If the weather conditions permit, we will be able to find different species of parrots, parakeets, and even macaws. When you arrive back at the lodge during the late afternoon or early evening, a delicious dinner will be awaiting you.



TRIP CODE

ECTSP8W

DEPARTURE

Saturdays

DURATION

8 Days

LOCATIONS

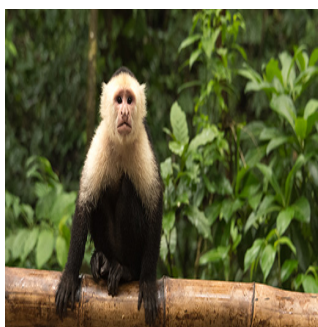
Ecuador, Galapagos
Islands



SOUTH AMERICA - MY PASSION

DAY 3: Canopy Tower and Amazon Trails

Napo Wildlife Centre have a set of activities where you can choose from onsite, designed and suggested by the tour guide depending on the conditions and group preference. Below is a suggested itinerary for the day: After another early breakfast, we leave the lodge to experience an amazing view of the rainforest from a 36 meter tall canopy tower, a great way to see the hustle and bustle of life above ground-level. This is the second tower at the Napo Wildlife Centre, located about 30 minutes from the lodge deep within the Terra Firme forest. As you ascend the 12-floor tower, you pass through different levels of the forest and emerge at the top of a huge Ceiba tree. Flocks of colourful tanagers pass right through the canopy of the tree. Blue-and-yellow macaws fly past while, in nearby trees, adorable spider monkeys search for fruit. Two species of large toucans call in the early mornings and afternoons, and the life of the forest canopy is laid out before you. Birds that are virtually impossible to see from the forest floor far below are suddenly right beside you, usually oblivious to your presence. The canopy tower opens a whole new world to guests of the Napo Wildlife Centre! Lunch is served at the lodge. Your afternoon can include discovering another Terra Firme trail, where we hike along primary forest to see the forest interior, possibilities of finding lizards, colourful manakins, or the unique and endemic Golden-mantled tamarin monkey. After the hike, explore the lake and creeks in a dugout canoe and enjoy a likely chance meeting with our local Giant otter family on the way.



DAY 4: Depart Napo Wildlife Center

Your last day will entail an early departure and final 2 hour excursion canoeing back to the Napo River. The creek may reveal new sights of giant otters, monk saki monkeys, and rare birds along the way. Once we have reached the river, you will transfer to the motorized canoe to return the way you came. You will arrive in Coca after an approximately 2 hour boat ride in order to check-in for your Coca – Quito flight. Precise schedule to be announced according to departure details and arrangements.



TRIP CODE

ECTSP8W

DEPARTURE

Saturdays

DURATION

8 Days

LOCATIONS

Ecuador, Galapagos
Islands



SOUTH AMERICA - MY PASSION

INCLUSIONS & DETAILS

Accommodation	Standard
Inclusions	Programmed visits to the islands Certified naturalist guide Snorkel gear (mask, snorkel and fins) Wetsuits Kayaks All meals on board Tea, coffee and natural juices
Difficulty Rating	1 (easy)
Single Surcharge	Available upon request
Notes	Contact us for more details
Price Dependent upon	Season and availability

TRIP CODE

ECTSP8W

DEPARTURE

Saturdays

DURATION

8 Days

LOCATIONS

Ecuador, Galapagos Islands



SUSTAINABILITY

Chimu Adventures undertakes a number of sustainability measures within its operations including:

- 1) Only using local guides and office staff to both maximise local employment opportunities and minimise carbon footprints. Local guides also ensure you benefit from the intimate knowledge, passion and culture of the country you're visiting.
- 2) Where possible, using locally owned and operated boutique hotels to maximise the return to the local community.
- 3) Chimu's "Pass it on" programme has provided funding to hundreds of local community projects in Latin America. Our aim is to empower local communities, helping them to develop their own infrastructure for the future. Since 2006, we have been working with Kiva (a well-known Non-Governmental Organisation), providing hundreds of loans to local businesses all over South America.
- 4) In our pre tour information we provide a range of tips and advice on how to minimise your impact on both local environments and communities.
- 5) Chimu Adventures' offices also take a number of sustainability measures including carbon offsets for company vehicles and most staff travel. Chimu Adventure's internal processes are also structures to create a paperless office and to reduce waste. There are also internal programmes to help staff minimise their carbon footprint such as our staff bike purchase assistance plan which encourages office staff to commute to work via bicycle. Currently almost half of our office based staff commute to work via bicycle.