

SOUTH AMERICA - SANTA CRUZ II



INTRODUCTION

A journey from San Cristóbal Island, through to Santa Fe, South Plaza, the world-famous Charles Darwin Research Station on Santa Cruz Island, Española Island with its remarkable visitor site of Punta Suárez and its lovely beach at Gardner Bay. A journey to remember.

The Santa Cruz II Experience

Santa Cruz II is explicitly designed to run in remote areas, enabling you to discover the beautiful and isolated Galapagos Islands. Due to its modern engine technology, the consumption of fuel is reduced, and onboard water desalination and treatment plants protect the waters around the Galapagos. This consequently protect the delicate and unique ecosystem that makes the destination so worthwhile.

Sleek and modern, The Santa Cruz II is ready to send you on an epic exploration of the Galapagos Islands in contemporary style. Perfect for groups of any size, it's numerous and large social spaces will give you the ability to enjoy peaceful moments: by yourself or in groups, as you wish. Galapagos land and aquatic activities abound in the form of hiking, kayaking, paddle boarding, snorkelling, coastal explorations, and even a glass-bottom boat (for those looking to witness the underwater world of the Galapagos Islands without getting wet)! Exceptional service and exquisite gastronomy await to complement the fascinating journey you're destined to experience during your Galapagos vacation aboard the Santa Cruz II, be it with family, friends, or on your own!

Cabins on the Santa Cruz II Galapagos Cruise have been designed to offer its guests the perfect space to relax, rest, and unwind after an unforgettable day of exploration. Modern and comfortable layouts will make your time onboard an incredibly enjoyable experience.

Santa Cruz II also offers a [5 day cruise](#) and [5 day cruise](#).

ITINERARY

TRIP CODE

ESTSSC2E

DEPARTURE

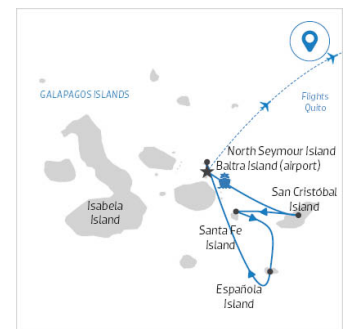
Saturdays

DURATION

7 Days

LOCATIONS

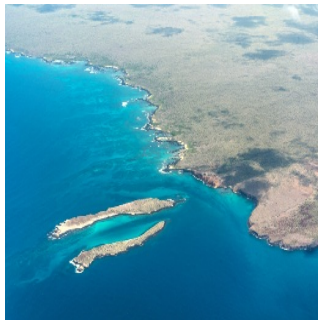
Galapagos Islands - Ecuador



SOUTH AMERICA - SANTA CRUZ II

DAY 1: Baltra & Mosquera

Upon arrival at Baltra Island via plane, we will proceed to the dock where we will embark on the Santa Cruz II. After receiving our welcome briefing and enjoying lunch onboard, we will sail just four nautical miles to Mosquera Islet, a small volcanic uplift situated between Baltra and North Seymour. The islet is a narrow sandbank encircled by lava reefs and is home to a large colony of young sea lions on its western shore. Our naturalist guides will lead us on a brief and easy walk along the flat sandy dunes past the sea lion colonies, where we will learn more about the delicate marine and terrestrial ecosystems of the Galapagos Islands..



DAY 2: Puerto Baquerizo Moreno & Punta Pitt

After a satisfying breakfast, we begin our day by disembarking at Puerto Baquerizo Moreno, the capital of the island, via a dry landing. From there, we embark on a 40-minute drive to the southern shore of the island. Our destination is Cerro Colorado, where we visit a breeding center that houses the highly-endangered giant tortoises. This breeding center is located in the midst of a stunning deciduous forest that is home to many bird species, including the San Cristobal mockingbird and the San Cristobal lava lizard, which are endemic to the island. In the afternoon, we will take a wet landing on the eastern tip of the island at Punta Pitt, which is an eroded tuff cone. The trail that leads to this cone provides an extraordinary view of the shoreline. It is the only site in the Galapagos where the three species of boobies can be found together. Along the coast, we can walk or enjoy a panga ride. There will be ample opportunities for snorkeling and swimming activities.



TRIP CODE

ESTSSC2E

DEPARTURE

Saturdays

DURATION

7 Days

LOCATIONS

Galapagos Islands - Ecuador



SOUTH AMERICA - SANTA CRUZ II

DAY 3: Santa Fe & South Plaza

After breakfast, we ride the dinghy to a picturesque white-sand beach, home to a thriving sea lion population. During the morning walk amid the giant prickly pear cactus, we may spot the endemic land iguana that is unique to this island. Guests can enjoy a rewarding experience of snorkelling and swimming from the panga rounds, or they can opt for non-snorkelling activities, such as kayaking or exploring the underwater world from the glass-bottom boat. After lunch and a break, we disembark (dry landing) at a breathtaking channel where the turquoise waters contrast with the white sand and black lava shoreline. A striking carpet of scarlet sesuvium succulents covers the ground beneath a grove of luminescent green prickly-pear cactus. The yellow-grey land iguanas wait patiently for pears to drop. Along the coastline, sea lion colonies thrive, while frigates, swallow-tailed gulls and shearwaters glide overhead.



DAY 4: Puerto Ayora & CharlesDarwin Research Centre

In the morning, we go ashore to visit the giant tortoise Breeding Centre at the Charles Darwin Research Station, situated in a breathtaking giant prickly-pear cactus forest that's home to a variety of land birds. This is where scientific research, conservation, and National Park administration take place. Once we finish our visit, we will take transportation to the cooler highlands of Santa Cruz Island for lunch in a completely different ecosystem. For the afternoon, there are several options available that can be arranged with your expedition leader. At the end of the day's activities, we will return to Puerto Ayora and board the Santa Cruz II.



TRIP CODE

ESTSSC2E

DEPARTURE

Saturdays

DURATION

7 Days

LOCATIONS

Galapagos Islands - Ecuador



SOUTH AMERICA - SANTA CRUZ II

DAY 5: Espanola Island

In the morning, we will disembark at Punta Suarez for an exciting walk that promises unique sightings of sea bird colonies. Among the species we can expect to see are waved albatross, Nazca boobies, blue-footed boobies, and swallow-tailed gulls. We will also witness Espanola's most famous 'blow hole' and be on the lookout for red-green-black marine iguanas. Later in the afternoon, we will visit the picture-perfect white coral beach of Gardner Bay and the nearby islet of Osborn, where we can observe sea lions, mockingbirds, and finches as we relax. This area offers great opportunities for snorkelling, swimming, and kayaking.



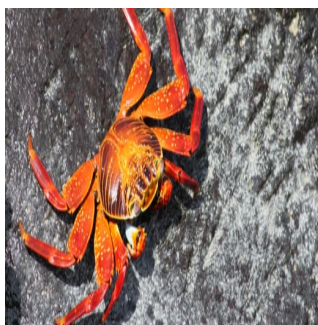
DAY 6: Santa Cruz & North Seymour

Upon arrival in the morning, we will visit Eden Islet, a small island situated off the coast of Santa Cruz. Here, we will have the opportunity to observe blue-footed boobies diving into the water, reef sharks, and frigates. If weather conditions permit, we can also snorkel or ride in the glass-bottom boat and kayak. North Seymour island was formed by a volcanic eruption, which lifted it from the ocean floor, resulting in a flat and low profile. The island's unique flora includes a small forest of silver-grey Palo Santo trees, which usually lack leaves and await the rainy season to bloom. North Seymour is an excellent site to begin exploring the islands and their wildlife, as it is inhabited by various bird colonies, such as blue-footed boobies, two species of frigate birds, swallow-tailed gulls, as well as sea lions and marine iguanas. This is the perfect opportunity to practice snorkelling or ride in our glass-bottom boat before we bid farewell to the Galapagos Islands.



DAY 7: Baltra Island

On our last day, we disembark at Baltra Island and transfer to the airport to take the flight back to the continent.



TRIP CODE

ESTSSC2E

DEPARTURE

Saturdays

DURATION

7 Days

LOCATIONS

Galapagos Islands - Ecuador



SOUTH AMERICA - SANTA CRUZ II

INCLUSIONS & DETAILS

Accommodation	Cabin
Inclusions	<p>All accommodation and meals on board Sightseeing with local English-speaking guide Transfers from airport Other meals where stated Snorkelling Gear Panga rides Exclusions Flights to/from embarkation and disembarkation cities Visa and reciprocity fees (if applicable) Travel Insurance Beverages Personal Expenses Galapagos Transit Control Card (USD\$20 per person subject to change) Galapagos National Park Entrance Fee (USD\$100 per person subject to change) Gratuities for crew/guides Any items not mentioned as included Wet suit rental</p>
Difficulty Rating	1 (easy)
Single Surcharge	Available upon request, contact us for more details.
Notes	All entrance fees are subject to change without prior notice.
Price Dependent upon	Departure date, season and availability.

SUSTAINABILITY

Being environmentally accountable is a crucial part of our organisation. Chimu is currently striving towards using less paper, taking several initiatives to do so and tracking our progress along the way. Our goal: A paperless organisation. For this reason, all information given to you will be sent electronically. We encourage those who choose to travel with us to support our aspirations and actions and ask that you reconsider printing out documentation. To view these documents, you can download them to your iPad or portable computer before and during your trip.

Chimu is passionate and dedicated to sustainability measures and understands the crucial part sustainability plays within the tourism industry.

We use local guides and office staff to both maximise local employment opportunities and minimise carbon footprint. Local guides also ensure you benefit from the intimate

TRIP CODE

ESTSSC2E

DEPARTURE

Saturdays

DURATION

7 Days

LOCATIONS

Galapagos Islands - Ecuador



SOUTH AMERICA - SANTA CRUZ II

knowledge, passion and culture of the country you're visiting. Our guides are all highly qualified (most with university degrees) or equip with many years of experience and are paid above the standard wage. Whether it be our knowledgeable local guides, locally produced meals or the transport on tour, we do not use imported goods when local products are available. We aim to minimise our impact on the environment and give as much back as possible to the communities we work in.

Santa Cruz II cruise contributes to a number of sustainability initiatives in line with Galapagos park policy and their own unique contribution philosophy. Single-use plastic is eliminated throughout the Galapagos, naturalist guides provide in depth education and respect for ecosystems when undertaking tours, and suppliers are chose from locally-owned organisations and operators to ensure economic sustainability within the region. While visiting the many national parks, heritage sites, museums and landmarks our travellers are encouraged to explore whilst remaining culturally aware and sensitive. We further encourage you to buy appropriate souvenirs and discourage the buying of anything wrongfully made or taken from the environment i.e. shells and endangered species products. Information on how you can be environmentally conscious, and travel responsibly will be made available in our Travellers Guides and provided during your travels by guides and staff.

For more information on our sustainability policies, including how we are striving towards being a paperless organisation, click [HERE](#)

TRIP CODE

ESTSSC2E

DEPARTURE

Saturdays

DURATION

7 Days

LOCATIONS

Galapagos Islands - Ecuador

