

ARGENTINA - LAKE DISTRICT DISCOVERY



INTRODUCTION

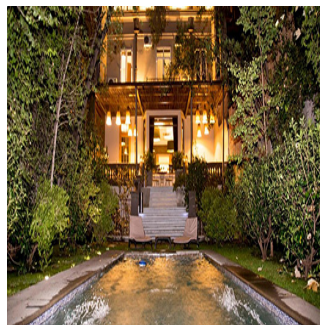
The Lake District is a region of lush farmland, dense forest, snow-capped volcanoes and deep, clear lakes, hidden for the most part in the mountains. Until the 1880s, when small farm settlements arrived, the entire region was blanketed in thick forests inhabited by the Mapuche (literally "people of the land"), who fought off the Inca and resisted Spanish attempts at colonization for 350 years. Nowadays, native culture still survives in the region: the Mapuche heritage is a badge of honour in today's Chile and Argentina, and at least half a million of the region's population claim this ancestry, many of whom reside on the extensive indigenous reservations throughout the Lake District.

Come and join us to explore these hidden gems of Chile and Argentina, where the real action lies in the region's many National Parks and around the adventure sports capitals of Puc n, Bariloche and Puerto Varas, where the options abound for hiking, volcano-climbing, rafting, kayaking, canyoning, horse-riding and soaking in the many thermal springs. In the winter, skiing down volcanoes draws an adventurous crowd.

ITINERARY

DAY 1: Arrival transfer in Santiago

On arrival at Santiago Airport, please make your way through Customs and Immigration. There are now two exiting gates, one for taxis and one for pre-booked transfers. All travellers who have prebooked and prepaid for an arrival transfer, must exit through gate 4, which is for pre-booked transfers. Our representative will be holding a sign with your name on it and waiting for you outside this exit. Please only make contact with our representative. This service includes a driver and local English speaking guide who will provide you with any useful information needed for your stay.



TRIP CODE

LATSLDD

DURATION

13 Days

LOCATIONS

Argentina, Chile, Patagonia



ARGENTINA - LAKE DISTRICT DISCOVERY

DAY 1: Santiago de Chile

Santiago, Chile's capital and largest city, lies in a valley surrounded by the snow-capped mountains of the Andes and the Chilean Coastal Range. Founded in 1541, Santiago has been Chile's capital since colonial times. It is a vibrant and cosmopolitan city and although it features many colonial buildings, it has grown into a modern metropolis and the cultural centre of the country. *Please note Australian passport holders are required to obtain a Chilean tourist visa or if transiting for longer than 8 hours before arrival.



DAY 1: Santiago Panoramic City Tour

You will be collected from your hotel for your tour of Santiago. Visit both the old and new areas of the city. Highlights include the Plaza de Armas, the city's central square and the heart of the city's old colonial core. The Plaza de Armas is home to the beautiful 18th century Metropolitan Cathedral, the early 19th century Royal Court Palace that houses the Natural History Museum and the Central Post Office completed in 1882. The Chess Club of Chile also meets here most days, a great opportunity to watch the locals immersed in a game of chess. Visit Cerro Santa Lucia, the hill on which Santiago was founded in 1541, now a park with fountains and stairs leading to a fort and panoramic viewpoint across the city. On completion of your tour, you will be taken to your hotel. Please note this is private tour.



DAY 2: Transfer to the airport for onward destination

You will be collected from your hotel at the appropriate time and transferred to the airport for your onward flight. This service includes a Spanish speaking driver only.



TRIP CODE

LATSLDD

DURATION

13 Days

LOCATIONS

Argentina, Chile, Patagonia



ARGENTINA - LAKE DISTRICT DISCOVERY

DAY 2: Arrival in Pucon area

On arrival in Pucón you will be met and transferred to Vira Hacienda Hotel. After settling in to your room you will be briefed about the excursion options for the next days. The Hacienda Hotel Vira Vira is set in a beautiful und unique location close to Pucón, Chile. It features a 23ha native park along the shores of the Liucura River and offers an oasis of peace and recreation. With their "Elegance of Adventure" concept, guests will be able to enjoy a large range of exclusive activities to explore the surroundings of the hotel.



DAY 3: Explore the Lakes & Volcanoes region

Every day you will meet with the excursion manager to discuss the activities for the next day. You can choose between a variety of amazing activities, suiting your personal liking and difficulty level. Some of our favourite excursions include horse trekking in the Cordilleras, hiking in one of the many surrounding Natural Parks, skiing in winter or simply spending a leisurely day sailing on the Lake Villarrica. Pucón is the ideal starting point for your adventures. This picturesque city is a melting point for numerous tourists and offers an unrivalled number of excursions and activities surrounded by breathtaking views and landscapes. The village is situated along the shores of the Villarrica Lake at the foot of the active Volcano Villarrica. Several hardly touched natural preserves such as Huerquehue National Park can easily be reached, where you can explore the fauna and flora. Pucón also offers a variety of other activities and adventures such as horseback riding, river rafting, kayaking, great hiking tours, ascents to the active volcano, skiing on the volcano with breathtaking views or simply relaxing in a natural hot spring.



DAY 4: Departure day

You will depart from Vira to be transferred to your onwards destination.



TRIP CODE

LATSLDD

DURATION

13 Days

LOCATIONS

Argentina, Chile, Patagonia



ARGENTINA - LAKE DISTRICT DISCOVERY

DAY 4: Vira vira to San Martin de los Andes

Transfer from Hotel Vira to San Martin de los Andes, Argentina.



DAY 4: San Martin de los Andes

The quiet town of San Martin de los Andes lies at the foot of the Andes, on the banks of Lake Lácar. Its setting is spectacular, surrounded by one of the most beautiful landscapes of Patagonia. It is a famous spot for birdwatching, but also offers kayaking, mountain biking, trekking, rafting and horse riding. Nearby is Parque Nacional Lanín with the snow-capped cone of Volcán Lanín as its centrepiece, dominating the view in every direction.



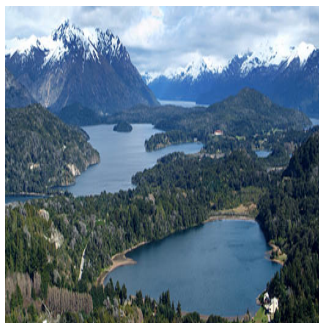
DAY 5: San Martin de los Andes to Villa la Angostura

Transfer by private vehicle from San Martin de los Andes to Villa la Angostura.



DAY 5: Villa la Angostura

The village of Villa la Angostura lies within the Nahuel Huapi National Park, on the shores of the Nahuel Huapi Lake. Surrounded by lakes, forests and mountains, it is considered to be one of most beautiful locations in the mountainous parts of Patagonia and is nicknamed the “Garden of Patagonia”. The wooden buildings in the village are Alpine style adding to its charm and character.



TRIP CODE

LATSLDD

DURATION

13 Days

LOCATIONS

Argentina, Chile, Patagonia



ARGENTINA - LAKE DISTRICT DISCOVERY

DAY 6: Villa la Angostura to Bariloche

You will be collected from your hotel at the appropriate time and transferred to Bariloche. Journey time will be approximately an hour and 30 minutes depending on road conditions. Please note this service includes bilingual driver only.



DAY 6: Bariloche

San Carlos de Bariloche lies on the southern shores of Lake Nahuel Huapi in the foothills of the Andes surrounded by mountains and forests. Its location is stunning, surrounded by the Nahuel Huapi National Park, the oldest National Park in Argentina. With its Alpine-styled architecture, its picturesque lakeside setting overlooked by mountains and forests as well as numerous boutique chocolate shops and St. Bernard dogs, the city has a Swiss-like atmosphere.



DAY 6: Wine by the lake

A wonderful and active day exploring Bariloche. Choose between a morning hike, bike ride or a pleasant paddle across the lake - all will give you stunning views of the Lake District, and the chance to learn from our expert guide about the flora, fauna and history of the Nahuel Huapi National Park. There is of course a delicious picnic lunch by the lake with tables & chairs and some great Argentine Malbec to reward yourself after an active morning!



NO IMAGE
AVAILABLE

TRIP CODE

LATSLDD

DURATION

13 Days

LOCATIONS

Argentina, Chile, Patagonia



ARGENTINA - LAKE DISTRICT DISCOVERY

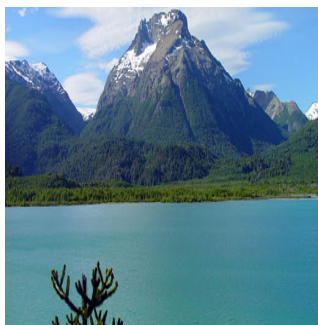
DAY 7: Bariloche Llao Llao Scenic

Enjoy a morning or afternoon getting to know one of the most beautiful parts of the Lake District, very close to the Llao Hotel, with our friendly local guide. First head along Bustillo Avenue, with spectacular views overlooking the Nahuel Huapi lake, and then after 30 minutes, stop at Campanario Hill where there is a cable car up to the top for a great 360° view. Further round the Llao peninsula, there is a short and easy walk to discover native species of flora, such as Arrayanes, Cipreses, Radales, Coihues and Maitenes among others. Then see Lago Escondido, the Angostura River and Lopez Bay, where a narrow river connects Lake Nahuel Huapi and Lake Moreno.



DAY 8: Full Day Andean Lake Crossing: Bariloche to Puerto

From Bariloche, your full day journey across the border today will be a combination of scenic bus rides and lake crossings. Set off from Bariloche by bus to Puerto Pañuelo along the shores of Lake Nahuel Huapi, taking in the lovely flower gardens and Swiss-style architecture that characterizes the area. Continue by boat to Puerto Blest and board the bus to Puerto Alegre. Sail from there to Puerto Frías, complete the Customs procedures to exit Argentina, and cross the Andes (altitude 976m) passing through Pérez Rosales National Park, to Peulla, completing Chilean Customs formalities on route. There'll be time for lunch (not included) in Peulla, before the onward cruise to Petrohué on Lake Todos Los Santos, widely considered to be one of Chile's most beautiful lakes with spectacular views of Osorno Volcano and the Puntagudo and Tronador mountain peaks when the weather is clear. The final leg of the journey is a scenic bus ride to Puerto Varas, arriving early evening. Please note this schedule is for guidance only and may change according to weather conditions and the number of passengers. National Park Entrance fee is included however a Boarding Tax is payable locally only in Argentinean Pesos (approx. USD \$3 per person).



TRIP CODE

LATSLDD

DURATION

13 Days

LOCATIONS

Argentina, Chile, Patagonia



ARGENTINA - LAKE DISTRICT DISCOVERY

DAY 9: Puerto Montt & Puerto Varas City Tour

You will be collected from your hotel for a sightseeing tour of Puerto Montt and Puerto Varas. Begin the tour in the capital of the region, Puerto Montt, visiting the Main Square, the commercial and harbour zone of Angelmó, famous in Chile because it has many hand crafts and gifts shops, and of course the City Central Market, where we can see how it works one of the principal economic activities, fishing and seafood. Continue down the Pan-American Highway to the charming town of Puerto Varas, located on the shore of Llanquihue Lake. Here you will discover the picturesque streets and visit various sites of interest including the Main Square, the Church of the Sacred Heart of Jesus and the Municipal Casino. On completion of the tour you will be taken to your hotel. Please note this is a small group tour.



DAY 9: Half Day Frutillar Tour

You will be collected from your hotel to visit Frutillar. Enroute stop at the city of Llanquihue and visit the Memorial to the German Colonists, then continue along the Llanquihue Lake to Frutillar. Founded in 1856 by German settlers, it is undoubtedly one of Chile's most beautiful towns. Walk around its beautiful old houses of German style, admiring the gardens and incomparable views of the volcanoes Osorno and Puntagudo. Also visit the German Museum which chronicles the life of the early settlers. Please note this is a small group tour. Tour includes entrance fee to the German Museum which is open daily except 25 December and 01 January.



DAY 10: Transfer to the airport for onward destination

You will be collected from your hotel at the appropriate time and transferred to the airport for your onward flight. Please note this service includes a local English speaking guide.



TRIP CODE

LATSLDD

DURATION

13 Days

LOCATIONS

Argentina, Chile, Patagonia



ARGENTINA - LAKE DISTRICT DISCOVERY

DAY 10: Arrival in Chiloe Island

On arrival you will be met and transferred to Tierra Chiloe Hotel & Spa. After settling into your room you will be briefed about the excursions for your next days. Tierra Chiloe Hotel & Spa is located on the largely unexplored island of Chiloe and has a rich and timeless culture. The sustainable 12-room lodge offers all-inclusive programs so you can just relax and discover Chiloe and its surroundings with our daily excursions, great meals and comfortable hotel facilities.



DAY 11: Activities in Chiloe Island

Today you may choose from a variety of Half and Full Day excursions. You will discover the magic, culture and nature of the archipelago through a different angle every day. Choose between cultural trips, boat excursions, horseback riding, biking, trekking and nature observations and visit the unique sites of the region just the way you like it. There are different difficulty levels available to suit every guest.



DAY 12: Activities in Chiloe Island

Again you may choose from a variety of Half and Full Day excursions. The Isla Grande de Chiloé is located 1.186 kilometres south of Santiago and 90 kilometres southwest of Puerto Montt. Amongst its many attractions are its wooden architectonic constructions, its houses on stilts and its many churches, most of them declared as World Heritage Sites. The local culture includes a spiritual mix of mythology and Catholicism.



DAY 13: Tierra Chiloe Departure

You will depart from Tierra Chiloe and transfer to your onwards destination.



TRIP CODE

LATSLDD

DURATION

13 Days

LOCATIONS

Argentina, Chile, Patagonia



ARGENTINA - LAKE DISTRICT DISCOVERY

INCLUSIONS & DETAILS

| | |
|-----------------------------|---|
| Accommodation | Luxury |
| Inclusions | Accommodation with breakfast everyday Airport transfers Meals as stated on the itinerary internal flights All inclusive program at Viva Vira hotel Pucon, Llao Llao Hotel and Resort Golf & Spa, Tierra Chiloe Hotel. |
| Difficulty Rating | 3 (Some fitness required) |
| Single Surcharge | Available upon request |
| Notes | Contact us for more details |
| Price Dependent upon | Season and availability |

SUSTAINABILITY

Chimu Adventures undertakes a number of sustainability measures within its operations including:

- 1) Only using local guides and office staff to both maximise local employment opportunities and minimise carbon footprints. Local guides also ensure you benefit from the intimate knowledge, passion and culture of the country you're visiting.
- 2) Where possible, using locally owned and operated boutique hotels to maximise the return to the local community.
- 3) Chimu's "Pass it on" programme has provided funding to hundreds of local community projects in Latin America. Our aim is to empower local communities, helping them to develop their own infrastructure for the future. Since 2006, we have been working with Kiva (a well-known Non-Governmental Organisation), providing hundreds of loans to local businesses all over South America.
- 4) In our pre tour information we provide a range of tips and advice on how to minimise your impact on both local environments and communities.
- 5) Chimu Adventures' offices also take a number of sustainability measures including carbon offsets for company vehicles and most staff travel. Chimu Adventure's internal processes are also structured to create a paperless office and to reduce waste. There are also internal programmes to help staff minimise their carbon footprint such as our staff bike purchase assistance plan which encourages office staff to commute to work via bicycle. Currently almost half of our office based staff commute to work via bicycle.

TRIP CODE

LATSLDD

DURATION

13 Days

LOCATIONS

Argentina, Chile, Patagonia

