

SOUTH AMERICA - POSADA AMAZONAS



INTRODUCTION

Strategically located just two hours from Puerto Maldonado, Posada Amazonas Lodge connects you to the natural and cultural wonders of the Tambopata jungle with opportunities to observe wildlife and to discover ancient indigenous heritage. Posada Amazonas is a 30-bedroom rainforest lodge perfect for your first taste of the Amazon's natural wonders. Despite being relatively close to Puerto Maldonado, the Posada Amazonas offers ample opportunities to see wildlife such as squirrel monkeys, howler monkeys, parrots and macaws. The lodge is also home to a family of giant river otters. This is truly a great place to immerse yourself in all the Peruvian Amazon has to offer. **Choose from a range of stays from 2 nights or more. Contact us for details.**

The Rainforest Expeditions Experience

Rainforest Expeditions has three properties nestled in the Peruvian Amazon. The extensive list of expeditions offer immersion in nature and local culture exchange aimed at providing a comprehensive experience of the rainforest. By staying at one of these three properties, you can make a meaningful contribution to sustainable efforts in preserving and protecting pristine land, wildlife populations and locals. Guests benefit from knowledgeable guides who provide an in-depth understanding of life in the rainforest of Tambopata. Enjoy an open wall facing the rainforest and awake with the sounds of jungle. Properties include [Refugio Amazonas](#), Posada Amazonas & [Tambopata Research Centre](#)

Highlights include:

Canopy Tower - A 30-metre scaffolding canopy tower gives you spectacular views of the vast expanses of standing forest with a good chance of spotting toucans, parrots, macaws or mixed species canopy flocks.

Ãque Ethnobotanical Centre - Visit Centro Ãque, a traditional community clinic, where the shaman or his assistant will take you on a unique tour to explain the uses of various medicinal plants.

Lake - Paddle around Lake Tres Chimbadas on a catamaran, looking for the resident

TRIP CODE

PETSPA4

DEPARTURE

Daily

DURATION

4 Days

LOCATIONS

Peru, Amazon



SOUTH AMERICA - POSADA AMAZONAS

family of giant river otters, and wildlife such as hoatzin, caiman or horned screamers.

Farm Visit - Visit a working jungle farm to learn about local agriculture and life. You will taste exotic tropical fruits including the source of chocolate and little known relatives of the tomato.

GREEN POINTS!

â The Posada Amazonas lodge is owned by the local indigenous community of Infierno and is run in partnership with Rainforest Expeditions.

â Local ownership ensures that the community directly benefits from the tourism that takes place in their precious environment. But more importantly, it ensures that they are empowered to shape the kind of tourism they want to see into the future. Since establishing this unique partnership back in 1996, the community has had an integral say through the initial 20-year plan they co-created with Rainforest Expeditions.

â The lodge is powered by solar.

ITINERARY

DAY 1: Arrival to Posada Amazonas

To begin your rainforest adventure, you will take a quick flight from Lima or Cuzco to the Amazonian city of Puerto Maldonado, in Southeastern Peru. Upon arrival at Puerto Maldonado Airport, a Refugio Amazonas representative will greet you and accompany you on the journey to the lodge. You will be taken on a one-hour road trip, followed by a tranquil 1-hour boat trip on the Tambopata River, to arrive at Refugio Amazonas. During the trip, there will be a stop at the local office where you can repack your luggage, bringing only necessary items for the next four days. The remaining belongings will be securely stored at the office. Upon reaching the lodge, you will be warmly welcomed and given a brief orientation. After dinner, you have the option to participate in a night walk, where you can observe the animals that are active during the evening, but often difficult to spot. The nocturnal frogs, with their captivating shapes and colors, as well as interesting sounds, can be seen more easily. Note: Please ensure that your flight arrives in Puerto Maldonado before 13pm. *Posada Amazonas offers a variety of on-site activities and excursions that can be customized. The itinerary presented below is provided as an example and may be subject to changes depending on weather, availability, or your personal preferences.



TRIP CODE

PETSPA4

DEPARTURE

Daily

DURATION

4 Days

LOCATIONS

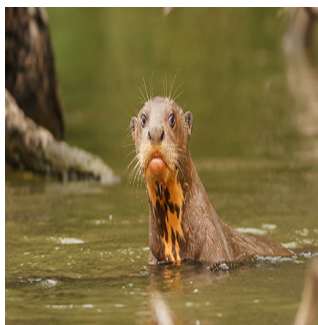
Peru, Amazon



SOUTH AMERICA - POSADA AMAZONAS

DAY 2: Exploring the Amazon

Early this morning, depart the lodge and enjoy a boat ride and a hike through the Amazon to arrive at Tres Chimbadas Oxbow Lake. Paddle around the lake in a comfortable catamaran, searching for the resident family of giant otters (seen by 60% of lake visitors) and other lakeside wildlife such as caiman, hoatzin, monkeys, and horned screamers. After your exploration, it is time to head back to the lodge and enjoy some lunch. After lunch enjoy a twenty-minute boat ride down river to the Native community of Infierno from the Esa Eja tribe. While on this journey, you may be able to see wildlife such as the well-known Capybara, considered as the largest rodent on the planet. When you arrive, you will find a locally run Medicinal Centre; where they heal their people using the local medicine. This is still park of their knowledge inherited by their ancestors, combined with western medicine. Learn about different medicinal (and other) uses of selected plants used for centuries. Arrive back at the lodge and take some time to relax before having some dinner. After dinner you may choose to go on a night walk, enabling you to explore, connect and discover different species active during the night. Creatures lurking at night include insects, frogs and some species of nocturnal mammals such as the Night Monkey.



TRIP CODE

PETSPA4

DEPARTURE

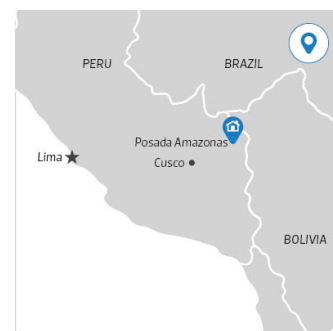
Daily

DURATION

4 Days

LOCATIONS

Peru, Amazon



SOUTH AMERICA - POSADA AMAZONAS

DAY 3: Exploring the Amazon

After breakfast, take a tour to the Parrot Clay Lick. From a blind location about twenty meters away, you will be able to see dozens of parrots and parakeets descend on most clear mornings to ingest the clay on the river bank. Species such as Mealy and Yellow-headed Amazon, Blue-Headed Parrot and Dusky headed Parakeet descend at this clay lick. The clay lick is active at dawn, during the late mornings and mid-afternoons. After lunch at the lodge, leave from the lobby and embark on a two-hour hike by the largest tree in the vicinity, a giant ceiba tree. During the hike you will learn about the location's natural history and its principle taxonomic groups. During the hike you will pass through two different types of forests (terra firme and flood-plain forest) with great chances to look for some wildlife. You will also have the opportunity to visit a local farm in the community of 'El Infierno' Arriving back at the lodge you will have some well-deserved lunch. After lunch, take a boat ride downriver to visit the local farm. When travelling, the best way to know more about the locals is by their markets. These will be located next to the local farms. You will be able to see and try several tropical fruits and learn about all the variety of crops that the local people grow. Your host will show you the local techniques for farming and get a better understanding of the main economic activities of the region and interact with the locals.



TRIP CODE

PETSPA4

DEPARTURE

Daily

DURATION

4 Days

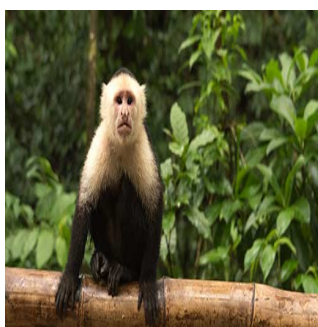
LOCATIONS

Peru, Amazon



DAY 4: Departure from Posada Amazonas

After breakfast, you will embark on a two-hour journey back to Puerto Maldonado for your departure flight. The trip includes 45 minute boat ride followed by a 1-hour road transfer to Puerto Maldonado. This provides a final opportunity to immerse yourself in the breathtaking natural scenery of the Tambopata National Reserve, offering a chance to spot a variety of wildlife along the way. Please note: Departure from the lodge is at 8am and arrival in Puerto Maldonado around 10am. Departing flights must be booked after 11am to allow sufficient time for your transfer to the airport.



SOUTH AMERICA - POSADA AMAZONAS

INCLUSIONS & DETAILS

Accommodation	Standard
Inclusions	<p>Accommodations All meals All tours, activity services and guides Transfer from and to the airport of Puerto Maldonado All river transportation</p> <p>Exclusions International flights Airport departure taxes or visa fees Excess baggage charges Additional nights during the trip due to flight cancellations Alcoholic beverages or bottled water Insurance of any kind Laundry Phone calls or other items of personal nature.</p>
Difficulty Rating	2 (light adventure)
Single Surcharge	Available upon request, contact us for more details.
Notes	<p>All entrance fees are subject to change without prior notice.</p> <p>This is a Tailor-Made itinerary which can be customised to create your own unique journey. Contact us to discuss your travel plans.</p>
Price Dependent upon	Season and availability

SUSTAINABILITY

Being environmentally accountable is a crucial part of our organisation. Chimu is currently striving towards using less paper, taking several initiatives to do so and tracking our progress along the way. Our goal: A paperless organisation. For this reason, all information given to you will be sent electronically. We encourage those who choose to travel with us to support our aspirations and actions and ask that you reconsider printing out documentation. To view these documents, you can download them to your iPad or portable computer before and during your trip.

Chimu is passionate and dedicated to sustainability measures and understands the crucial part sustainability plays within the tourism industry.

We use local guides and office staff to both maximise local employment opportunities and minimise carbon footprint. Local guides also ensure you benefit from the intimate knowledge, passion and culture of the country you're visiting. Our guides are all highly qualified (most with university degrees) or equip with many years of experience and are paid above the standard wage. Whether it be our knowledgeable local guides, locally

TRIP CODE

PETSPA4

DEPARTURE

Daily

DURATION

4 Days

LOCATIONS

Peru, Amazon



SOUTH AMERICA - POSADA AMAZONAS

produced meals or the transport on tour, we do not use imported goods when local products are available. We aim to minimise our impact on the environment and give as much back as possible to the communities we work in.

Since 1996, Rainforest Expeditions and the indigenous community of Infierno (part of the Ese Eja Nation) have forged a unique partnership. Rainforest Expeditions supports the marketing and management of the Posada Amazonas lodge, employing many Ese Eja community members, and every year, most of the lodge's profits are shared among the tribe's households. While visiting the many national parks, heritage sites, museums and landmarks our travellers are encouraged to explore remain culturally aware and sensitive. We further encourage you to buy appropriate souvenirs and discourage the buying of anything wrongfully made or taken from the environment i.e. shells and endangered species products. Information on how you can be environmentally conscious, and travel responsibly will be made available in our Travellers Guides and provided during your travels by guides and staff.

For more information on our sustainability policies, including how we are striving towards being a paperless organisation, click [HERE](#)

TRIP CODE

PETSPA4

DEPARTURE

Daily

DURATION

4 Days

LOCATIONS

Peru, Amazon

