

PERU - CUSCO & MACHU PICCHU DISCOVERY



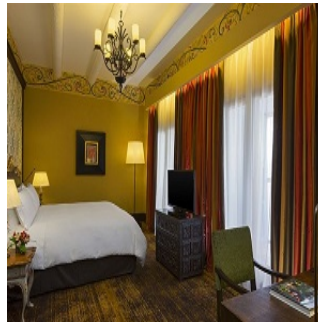
INTRODUCTION

We have taken the highlights of Cusco and squeezed them into a five-day trip: the historic city of Cusco, the historic towns and landscapes of the Sacred Valley and, of course, the unsurpassed wonders of Machu Picchu.

ITINERARY

DAY 1: Arrival transfer in Cusco

On arrival, please make your way through to the Arrivals Hall where our representative will be waiting for you to transfer you to your hotel. He/she will be holding a sign with your name on it. Should you not be able to locate them, please refer to the front of your itinerary for emergency contact details of our representative office. Please note this service is with a driver only.



DAY 1: Cusco

Cusco, set at an altitude of 3,400 metres in the Peruvian Andes, was once the capital of the Inca Empire. It is known for its Spanish colonial architecture and Incan remains. Narrow, cobble-stoned streets lined by Inca walls stretch out from the main plaza in every direction. Many of the colonial buildings were built on top of Incan foundations and the stonework is unparalleled in its precision and beauty.



TRIP CODE
PETSCMD
DURATION
5 Days
LOCATIONS
Cusco and Machu Pichu

PERU - CUSCO & MACHU PICCHU DISCOVERY

DAY 2: Cusco - City Tour

You will be collected from your hotel for a sightseeing tour through Cusco, the heart of the Inca Empire. Visit the fascinating Qorikancha Temple of the Sun, the 12-Angled Rock and the Cathedral, built on the ruins of an Inca Palace. From here head to the archaeological remains located around the city, including the fortress of Sacsayhuaman, Qenqo (giant rock), the ancient site of Puca Pucara and finally the Water Temple of Tambomachay. On completion of your tour, you will be taken to your hotel. Included in your tour price is the BTG (Tourist Ticket of Cusco). Please note this is a small group tour.



DAY 3: Sacred Valley Full Day Tour

You will be collected from your hotel for a day of exploring the Sacred Valley of the Incas. This fertile river valley was home to many important sites for the Incas, both strategic and religious. The first stop is the village of Pisac, with its famous market and Inca Ruins. There is free time to wander the colourful market stalls before heading uphill to the Pisac, Intihuatana, Q'allaqasa and Kinchiracay ruins. Enjoy a fine buffet lunch in gardens overlooking the Valley. Continue your journey along the River Urubamba, to Ollantaytambo. The town, which is dominated by a giant Inca fortress, is perhaps the best surviving example of Inca town planning and was the scene of a rare Inca victory over the invading Spanish. Transfer to your hotel for the night or should you be returning to Cusco, visit Chinchero en route, an important Inca town with a colonial church and plaza.



TRIP CODE

PETSCMD

DURATION

5 Days

LOCATIONS

Cusco and Machu Pichu



PERU - CUSCO & MACHU PICCHU DISCOVERY

DAY 3: Ollantaytambo to Aguas Calientes

Travel from Ollantaytambo to Machu Picchu in this comfortable train, and let your feet have rest. Enjoy an authentic Andean experience, while relaxing in modern and comfortable interior design illuminated by Latin American music. Comfortable seats with tables in front to share the journey with friends and partake of a refreshing beverage. On-board services includes a fun and refreshing selection of drinks prepared using Andean herbs and fruits, all of which boast revitalising properties to fill you with energy and keep you ready for the next adventure waiting ahead of you. *Due to limited space for luggage storage on trains, luggage restrictions apply: one bag or backpack (carry-on luggage) with a maximum weight of 5.0 kg/11 lb, measuring no more than 62 linear inches/157 linear cm (height + length + width)



TRIP CODE

PETSCMD

DURATION

5 Days

LOCATIONS

Cusco and Machu Pichu



DAY 4: Machu Picchu Guided Tour

Machu Picchu is a 15th century Inca site, located 2,430 metres above sea level on a mountain ridge above the Sacred Valley. It is the most famous of all Inca sites, but it was not until 1911 that it was brought to the world's attention by the American historian Hiram Bingham. The Incas abandoned the city just prior to Spanish colonisation, the city was never pillaged and as a result the ruins are still in fantastic condition. With its location on a dramatic ridgeline surrounded by sheer cliffs and the Urubamba River on three sides, the city of Machu Picchu is a remarkable place to visit. Machu Picchu was declared a UNESCO World Heritage Site in 1983 and in 2007 it was voted one of the new Seven Wonders of the World. The tour starts with a bus ride from Aguas Calientes to Machu Picchu. You will be astonished at your first view of Machu Picchu, a stunning display of ancient architecture with incredible surroundings. Enjoy a guided shared tour of the ruins and monuments such as the Main Square, the Circular Tower, the Sacred Solar Clock, the Royal Quarters, the Temple of the Three Windows and the Cemeteries. Return by bus to Aguas Calientes village. Please be aware that your tour of Machu Picchu does not include an entry permit to Huayna Picchu (the iconic hill behind the Machu Picchu ruins). If you want to climb Huayna Picchu then you need to pre-book your permit with at least 3 months in advance. Please contact your travel specialist if you would like to do this.



PERU - CUSCO & MACHU PICCHU DISCOVERY

DAY 4: 360 Machu Picchu Train: Mapi - Ollanta PM

This afternoon travel by train from Aguas Calientes to Ollantaytambo. *Due to limited space for luggage storage on trains, luggage restrictions apply: one bag or backpack (carry-on luggage) with a maximum weight of 5.0 kg/11 lb, measuring no more than 62 linear inches/157 linear cm (height + length + width)



DAY 4: Private Transfer Ollantaytambo - Cusco

Transfer from Ollantaytambo train station in the Sacred Valley to Cusco.



DAY 5: Depart Cusco

You will be collected from your hotel at the appropriate time and transferred to the airport for your onward flight.



TRIP CODE

PETSCMD

DURATION

5 Days

LOCATIONS

Cusco and Machu Pichu




INCLUSIONS & DETAILS

Accommodation

Deluxe

PERU - CUSCO & MACHU PICCHU DISCOVERY

Inclusions	<p>Private Airport Transfers Internal flights as part of itinerary Accommodation with breakfast daily Sightseeing with local English-speaking guide Other meals where stated</p> <p>Exclusions International flight Visa and reciprocity fees (if applicable) Travel Insurance Beverages Personal expenses Gratuities for tour guides/drivers Any items not mentioned as included Train service to/from Machu Picchu town</p>
Difficulty Rating	2 (high altitude)
Single Surcharge	Subject to season and availability, contact us for more details.
Notes	<p>Upgrades to the iconic Hotel Monasterio in Cusco or Sanctuary Lodge Hotel at Machu Picchu are available. All entrance fees are subject to change without prior notice.</p> <p>This is a Tailor-Made itinerary which can be customised to create your own unique journey. Contact us to discuss your travel plans.</p>
Price Dependent upon	Availability and season.

TRIP CODE
PETSCMD
DURATION
5 Days
LOCATIONS
Cusco and Machu Pichu


SUSTAINABILITY

Being environmentally accountable is a crucial part of our organisation. Chimu is currently striving towards using less paper, taking several initiatives to do so and tracking our progress along the way. Our goal: A paperless organisation. For this reason, all information given to you will be sent electronically. We encourage those who choose to travel with us to support our aspirations and actions and ask that you reconsider printing out documentation. To view these documents, you can download them to your iPad or portable computer before and during your trip.

Chimu is passionate and dedicated to sustainability measures and understands the crucial part sustainability plays within the tourism industry.

We use local guides and office staff to both maximise local employment opportunities and minimise carbon footprint. Local guides also ensure you benefit from the intimate knowledge, passion and culture of the country you're visiting. Our guides are all highly qualified (most with university degrees) or equip with many years of experience and are paid above the standard wage. Whether it be our knowledgeable local guides, locally produced meals or the transport on tour, we do not use imported goods when local products are available. We aim to minimise our impact on the environment and give as

PERU - CUSCO & MACHU PICCHU DISCOVERY

much back as possible to the communities we work in.

While visiting the many national parks, heritage sites, museums and landmarks our travellers are encouraged to explore remain culturally aware and sensitive. We further encourage you to buy appropriate souvenirs and discourage the buying of anything wrongfully made or taken from the environment i.e. shells and endangered species products. Information on how you can be environmentally conscious, and travel responsibly will be made available in our Travellers Guides and provided during your travels by guides and staff.

For more information on our sustainability policies, including how we are striving towards being a paperless organisation, click [HERE](#)

TRIP CODE

PETSCMD

DURATION

5 Days

LOCATIONS

Cusco and Machu Pichu

