

## SOUTH AMERICA - CLASSIC PATAGONIA



### TRIP CODE

MCTSCLPT

### DURATION

12 Days

### LOCATIONS

Argentina, Chile,  
Patagonia



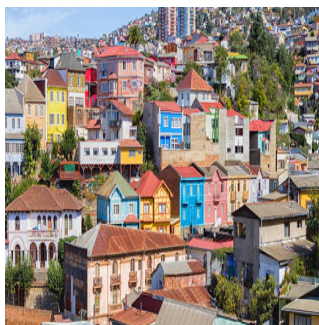
## INTRODUCTION

This exciting trip is perfect for those with limited time, who still want to take in the wonder of Patagonia. This adventure includes the Famous Torres del Paine National Park, beloved by walkers from across the globe and the spectacular Perito Moreno Glacier as well as the vibrant capitals Santiago and Buenos Aires.

## ITINERARY

### DAY 1: Arrival transfer in Buenos Aires

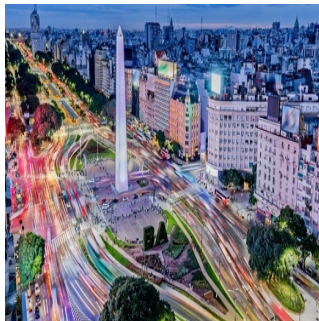
On arrival, please make your way through to the Arrivals Hall where our representative will be waiting for you to transfer you to your hotel. He/she will be holding a sign with your name on it. Please note this service is with a driver only.



## SOUTH AMERICA - CLASSIC PATAGONIA

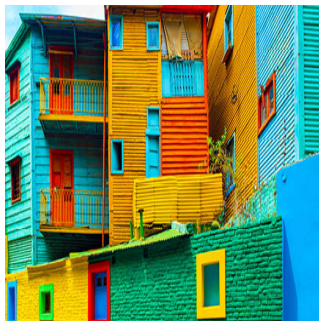
### DAY 1: Buenos Aires

Buenos Aires, Argentina's elegant, historic and cosmopolitan capital, is known as the "Paris of the South" due to its European atmosphere with glamorous avenues lined with fashionable shops and Parisian-style restaurants and cafes. Located on the western shore of the estuary of the Río de la Plata, Buenos Aires has many fascinating neighbourhoods to explore including the colourful and lively La Boca, home to art galleries and tango shows; San Telmo with its restored mansions and antique stores and Recoleta, the city's most exclusive area.



### DAY 2: Highlights of Buenos Aires City Tour

You will be collected from your hotel for your three-hour tour visiting the most important highlights of the city of Buenos Aires. Discover the history of the Plaza de Mayo Square, the site of Argentina's most important historical events - see its surroundings and the most emblematic buildings and learn all about them. Then enjoy Mayo Avenue and wonder in awe at the oldest residential neighbourhood in Buenos Aires: San Telmo. Live and feel the original Tango in the neighbourhood of La Boca: walk along Caminito Street and enjoy the Dancers and souvenir shops. See the mythical Boca Juniors soccer stadium. Contemplate the modernization of the city whilst traveling along Puerto Madero and its exclusive docks, full of excellent restaurants and large offices. Pass through the Retiro neighbourhood and move on to see Palermo and its most exclusive residential area before finally arriving at Recoleta. The tour comes to an end near the Recoleta Cemetery. Here you can choose to be taken back to the hotel with the group, or to continue unguided into the cemetery, where you can find the final resting place of Eva Peron, "Evita." Please note: This is a small group tour. If you wish to stay behind and visit the Recoleta Cemetery, there is an entrance fee of approximately \$15 USD, payable locally, you would then make your own way back to the hotel.



#### TRIP CODE

MCTSCLPT

#### DURATION

12 Days

#### LOCATIONS

Argentina, Chile,  
Patagonia



## SOUTH AMERICA - CLASSIC PATAGONIA

### DAY 2: El Querandi Tango Show & Dinner

This evening you will be collected from your hotel to experience a Tango Show with dinner. This is an intimate & passionate tango show, housed in a cozy wood-panelled 19th century building with a colourful history as a meeting point for poets and students in the heart of Buenos Aires's historic centre. After being abandoned in the late 1970s, the bar was restored and reopened in 1992 as El Querandí Tango Hall. The show is directed by Claudio Campos, with musical arrangements by Ado Falasca, and it smoothly charts the history of Argentina's most authentic artistic expression from its origins to the modern day. The dinner is better than many, and at just over an hour long, the show is the perfect length. The three house singers, six dancers and four musicians put on a great show. Dinner will be served from 8.30pm followed by the show commencing at 10.00pm. Please note timings are subject to change and will be confirmed directly to you. On completion of the show, you will be taken to your hotel. Please note this is a small group tour.



#### TRIP CODE

MCTSCLPT

#### DURATION

12 Days

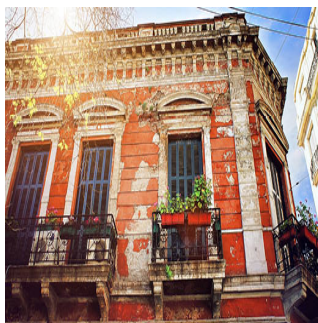
#### LOCATIONS

Argentina, Chile,  
Patagonia



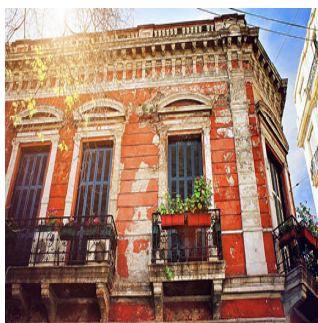
### DAY 3: Free day in Buenos Aires

Today is free to enjoy the sights and sounds of this world famous city. Why not enjoy a day trip over the River Plate to the beautiful city of Colonia, Uruguay with its UNESCO World Heritage Listed historic centre, perhaps wander the streets of San Telmo antiques district (home to the famous Sunday markets), enjoy some of the world class shopping or soak up some of Buenos Aires' Parisian atmosphere.



### DAY 4: Transfer to the airport for onward destination

You will be collected from your hotel at the appropriate time and transferred to the airport for your onward flight. This service includes a driver only.

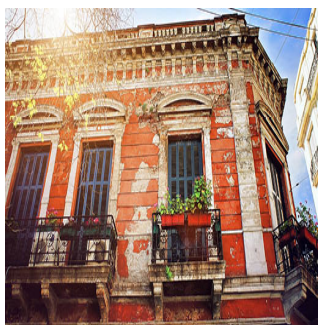




## SOUTH AMERICA - CLASSIC PATAGONIA

### DAY 4: Arrival transfer in El Calafate

On arrival, please make your way through to the Arrivals Hall where our representative will be waiting for you to transfer you to your hotel. He/she will be holding a sign with your name on it. Please note this service is with a driver only. Please make your own way to Las Lenguas counter upon arrival to wait for your next shuttle. Please bear in mind that wait times can vary from 15 minutes up to 2 hours depending on flight schedules.



### DAY 4: El Calafate

El Calafate flanks the southern shore of Lago Argentino in the southwest part of Argentina's Santa Cruz Province. The town is near the edge of the Southern Patagonian Ice Field and one of the gateways to World Heritage Listed Parque Nacional Los Glaciares. The name El Calafate is derived from the calafate plant common in Patagonia. The town's main street, Avenida del Libertador General San Martín, is lined with restaurants, cafes, chocolate shops and souvenir shops.



### DAY 5: Perito Moreno with South Wall Cruise

This morning you will be collected from your hotel to venture into Los Glaciares National Park to see the world famous Perito Moreno Glacier. The glacier is more than two miles wide and averages 74m in height above the surface of the water of Lake Argentino. It is one of the very few glaciers in the world that continues to advance and if you are lucky you may see the glacier calving as large masses of ice break away from the glacier and collapse into the water. Enroute to the glacier, stop at the pier for a short boat trip to the south wall of the glacier. From the water level you get a feel for the size of this remarkable glacier - a true highlight of Patagonia. Reaching the Icebergs Channel, the boat will stop at a safe distance from the glacier, continuing to sail down all its front, allowing a spectacular view of the high wall of ice. On completion of the tour you will be taken to your hotel.



#### TRIP CODE

MCTSCSCLPT

#### DURATION

12 Days

#### LOCATIONS

Argentina, Chile, Patagonia



## SOUTH AMERICA - CLASSIC PATAGONIA

### DAY 6: El Calafate

Today is free to spend at your leisure in El Calafate and the surroundings.



### DAY 7: Hotel Las Torres - Arrival

Today, you will be met your arrival point and transferred to Hotel Las Torres, located inside Torres Del Paine National Park. This transfer is up to 5 hours in length on good paved and dirt roads and offers a great introduction in the wide open expanses of the Patagonian pampas. Pick ups at 9am and 3pm from Punta Arenas City and 9.30am and 3.30pm from Punta Arenas Airport.



### DAY 8: Explore Torres del Paine National Park

There are no set itineraries for your stay at Hotel Las Torres. Each day you can choose from a selection of five to ten different activities selected according to the weather and your interests. These include hiking, horseback riding, van or motorboat excursions. In groups no larger than ten guests accompanied by a bilingual guide, explorations allow an in-depth contact with the wonders of Torres del Paine National Park, year round.



### DAY 9: Explore Torres del Paine National Park

There are no set itineraries for your stay at Hotel Las Torres. Each day you can choose from a selection of five to ten different activities selected according to the weather and your interests. These include hiking, horseback riding, van or motorboat excursions. In groups no larger than ten guests accompanied by a bilingual guide, explorations allow an in-depth contact with the wonders of Torres del Paine National Park, year round.



#### TRIP CODE

MCTSCSCLPT

#### DURATION

12 Days

#### LOCATIONS

Argentina, Chile,  
Patagonia



# SOUTH AMERICA - CLASSIC PATAGONIA

## DAY 10: Hotel Las Torres - Departure

Early this morning you will depart Las Torres Hotel aboard their shuttle service transfer. Departure times will be reconfirmed to you directly by the hotel the evening prior to your departure. Please note journey times are as follows however they are dependant on weather and road conditions: El Calafate via Cerro Castillo (border crossing) will be approximately five hours and 30 minutes departing at 7am. Puerto Natales will be approximately two hours departing at 2pm. Punta Arenas will be approximately five hours departing at 7.30am and 1pm.



## DAY 10: Arrival transfer in Santiago


On arrival at Santiago Airport, please make your way through Customs and Immigration and only exit from the green doors marked 'Meeting Point'. Our representative will be holding a sign with your name on it and waiting for you outside this exit. Please only make contact with our representative. This service includes a driver and local English speaking guide who will provide you with any useful information needed for your stay.



## DAY 10: Santiago de Chile

Santiago, Chile's capital and largest city, lies in a valley surrounded by the snow-capped mountains of the Andes and the Chilean Coastal Range. Founded in 1541, Santiago has been Chile's capital since colonial times. It is a vibrant and cosmopolitan city and although it features many colonial buildings, it has grown into a modern metropolis and the cultural centre of the country. \*Please note Australian passport holders are required to obtain a Chilean tourist visa or if transiting for longer than 8 hours before arrival.



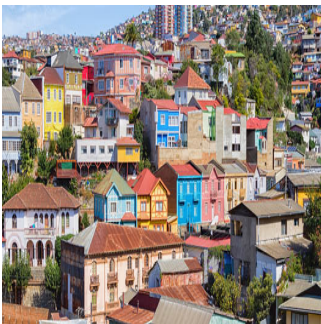
TRIP CODE
MCTSCLPT
DURATION
12 Days
LOCATIONS
Argentina, Chile, Patagonia




# SOUTH AMERICA - CLASSIC PATAGONIA

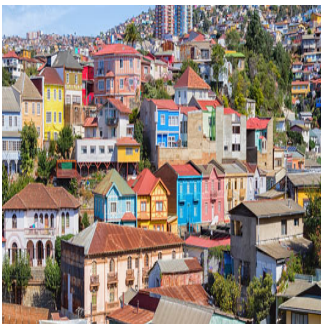
## DAY 11: Full Day Valparaíso Tour


This morning you will be collected from your hotel for a full day tour of Vina del Mar and Valparaíso are two of Chile’s unmissable destinations. Known as the “Garden City”, for originally being surrounded by largely green areas and for now preserving its extensive and beautiful urban gardens, with the Pacific Ocean as its backdrop, Vina del Mar is undoubtedly one of Chile’s unmissable destinations. Vina del Mar stands out for its beautiful architecture, its impressive palaces and famous Flower Clock, photographed by tourists from all over the world. During the tour, you will have the option to have lunch (not included in tour price) in one of the numerous restaurants in the city, with a variety of delicious sea food on offer. We will travel along the sea front, and enjoy the views of the Pacific Ocean, before arriving at the most important ports in Chile; Valparaíso. It was listed as a UNESCO World Heritage site thanks to its colourful beauty and the uniqueness of its location on the hills, which create a natural Amphitheatre with the ocean as its stage. We will visit Cerro Alegre, where you can truly appreciate the magic of the city, with its picturesque funiculars, multi-coloured neighbourhoods and unforgettable sea views. We will then head to the Sotomayor Square, to see the Monument of the Heroes of Iquique. At the end of the tour, we will return to Santiago and you will be taken to your hotel. Please note this is a small group tour.



## DAY 12: Transfer to the airport for onward destination

You will be collected from your hotel at the appropriate time and transferred to the airport for your onward flight. This service includes a Spanish speaking driver only.




TRIP CODE
MCTSCLPT
DURATION
12 Days
LOCATIONS
Argentina, Chile, Patagonia


## INCLUSIONS & DETAILS

Accommodation	Hotels
---------------	--------

# SOUTH AMERICA - CLASSIC PATAGONIA

<b>Inclusions</b>	Private airport transfers Accommodation with breakfast daily All Inclusive program in Atacama and Patagonia Sightseeing with local English-speaking guide Other meals where stated <b>Exclusions</b> International flights Visa and reciprocity fees (if applicable) Travel insurance Beverages Personal expenses Gratuities for guides/drivers Any items not mentioned as included
<b>Difficulty Rating</b>	2 (light adventure)
<b>Single Surcharge</b>	Available upon request, contact us for more details.
<b>Notes</b>	Please note that this tour does not operate during the winter months and that hotel/ lodge availability can be a problem in December/ January especially. Surcharges may also apply in these months as it is peak season.
<b>Price Dependent upon</b>	Season and availability

<b>TRIP CODE</b>
MCTSCLPT
<b>DURATION</b>
12 Days
<b>LOCATIONS</b>
Argentina, Chile, Patagonia


## SUSTAINABILITY

Being environmentally accountable is a crucial part of our organisation. Chimu is currently striving towards using less paper, taking several initiatives to do so and tracking our progress along the way. Our goal: A paperless organisation. For this reason, all information given to you will be sent electronically. We encourage those who choose to travel with us to support our aspirations and actions and ask that you reconsider printing out documentation. To view these documents, you can download them to your iPad or portable computer before and during your trip.

Chimu is passionate and dedicated to sustainability measures and understands the crucial part sustainability plays within the tourism industry.

We use local guides and office staff to both maximise local employment opportunities and minimise carbon footprint. Local guides also ensure you benefit from the intimate knowledge, passion and culture of the country you’re visiting. Our guides are all highly qualified (most with university degrees) or equip with many years of experience and are paid above the standard wage. Whether it be our knowledgeable local guides, locally produced meals or the transport on tour, we do not use imported goods when local products are available. We aim to minimise our impact on the environment and give as much back as possible to the communities we work in.

Your itinerary includes a stay at the Patagonia Eco Camp. In regards to socio-cultural aspects, all food is bought from nearby farm suppliers, horses are hired from local ranch owners, most handicrafts and decoration are purchased from local artisan markets and



## SOUTH AMERICA - CLASSIC PATAGONIA

they ensure a fair price is paid for all goods when buying directly from the local community. Eco Camp also offers regular in-house training of staff of which 90% are employed from the local region. We further encourage you to buy appropriate souvenirs and discourage the buying of anything wrongfully made or taken from the environment i.e. shells and endangered species products. Information on how you can be environmentally conscious, and travel responsibly will be made available in our Travellers Guides and provided during your travels by guides and staff.

For more information on our sustainability policies, including how we are striving towards being a paperless organisation, click [HERE](#)

### TRIP CODE

MCTSCLPT

### DURATION

12 Days

### LOCATIONS

Argentina, Chile,  
Patagonia

