

SOUTH AMERICA - LAKES ADVENTURE



INTRODUCTION

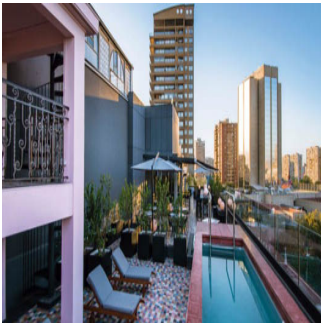
Choose this [Tailor-Made itinerary](#) or [customise to create your own unique journey](#).
 Departs daily to suit your travel plans. Price based on Standard accommodation.
 Superior or Deluxe also available.

Discover Chile and Argentina's wonders on this journey through the Lakes district. Starting up with the cuisine, arts and beauty of dramatic Santiago before adopting a slower pace in the quieter Lakes District, where natural wonders are in abundance. This beautiful scenic trip takes you from Puerto Varas, Chile to Bariloche, Argentina across three different lakes in the Andean range. This journey between the two countries is one of the most scenic in Latin America.

ITINERARY

DAY 1: Arrival transfer in Santiago

On arrival at Santiago Airport, please make your way through Customs and Immigration. There are now two exiting gates, one for taxis and one for pre-booked transfers. All travellers who have prebooked and prepaid for an arrival transfer, must exit through gate 4, which is for pre-booked transfers. Our representative will be holding a sign with your name on it and waiting for you outside this exit. Please only make contact with our representative. This service includes a driver and local English speaking guide who will provide you with any useful information needed for your stay.



TRIP CODE

MCTSLA

DEPARTURE

Daily

DURATION

7 Days

LOCATIONS

Chile, Argentina, Patagonia



SOUTH AMERICA - LAKES ADVENTURE

DAY 2: Half Day City Tour with Los Dominicos

This morning you will be collected from your hotel for your city tour. Your guide will take you on a tour highlighting Santiago's most important historical sites, including the downtown area surrounding the Plaza de Armas and the La Moneda Presidential Palace. You will visit some of the lesser known barrios of Santiago including República and Concha y Toro, which were historically privileged neighbourhoods and home to Santiago's high society. There will be time to walk around and take photos of the varied styles of architecture dating back to the 19th and early 20th century. Continuing through the cobblestoned Lastarria neighborhood, you will walk through the Parque Forestal and pass by the Bellas Artes Museum. Then you will continue to the picturesque Los Dominicos Market where over 150 Chilean artists' handicrafts are displayed. Stroll through the lovely artisan village, you could enjoy a tasty empanada at one of the outdoor cafés (not included). On completion of your tour, you will be taken to your hotel. Please note this is private tour.



DAY 3: Transfer to the airport for onward destination

You will be collected from your hotel at the appropriate time and transferred to the airport for your onward flight. This service includes a Spanish speaking driver only.



DAY 3: Transfer Puerto Montt - Puerto Varas

On arrival, please make your way through to the Arrivals Hall where our representative will be waiting for you to transfer you to your hotel. He/she will be holding a sign with your name on it.



TRIP CODE

MCTSLA

DEPARTURE

Daily

DURATION

7 Days

LOCATIONS

Chile, Argentina, Patagonia



SOUTH AMERICA - LAKES ADVENTURE

DAY 3: Arrival in Puerto Varas

Puerto Varas and Puerto Montt lie at the southern end of the Lake District under the shadow of the snow-capped Osorno and Calbuco volcanoes. Puerto Varas sits on the shores of Lake Llanquihue and is known as “The City of Roses”. Puerto Montt is 20kms from Puerto Varas on the Seno de Reloncaví Bay, the capital of the Lake District, and the last significant outpost of the region.



DAY 4: Puerto Montt & Puerto Varas City Tour

You will be collected from your hotel for a sightseeing tour of Puerto Montt and Puerto Varas. Begin the tour in the capital of the region, Puerto Montt, visiting the Main Square, the commercial and harbour zone of Angelmó, famous in Chile because it has many hand crafts and gifts shops, and of course the City Central Market, where we can see how it works one of the principal economic activities, fishing and seafood. Continue down the Pan-American Highway to the charming town of Puerto Varas, located on the shore of Llanquihue Lake. Here you will discover the picturesque streets and visit various sites of interest including the Main Square, the Church of the Sacred Heart of Jesus and the Municipal Casino. On completion of the tour you will be taken to your hotel. Please note this is a small group tour.



TRIP CODE

MCTSLA

DEPARTURE

Daily

DURATION

7 Days

LOCATIONS

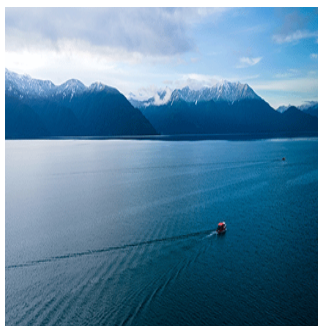
Chile, Argentina, Patagonia



SOUTH AMERICA - LAKES ADVENTURE

DAY 5: Andean Lake Crossing Puerto Varas-Bariloche

From Puerto Varas, your journey across the border today will be a combination of scenic bus rides and lake crossings. Set off from Puerto Varas at 8.30am by bus to Petrohué. The road hugs the shores of Lake Llanquihue and affords fantastic views of the Osorno and Calbuco Volcanoes. Entrance to the Vicente Pérez Rosales National Park where we will visit the impressive Saltos del Petrohue Waterfall (entrance included). Appreciate the capricious volcanic rock formations, bathed in the emerald green waterfalls before heading off for Peulla by boat. This cruise on Lake Todos Los Santos, widely considered to be one of Chile's most beautiful lakes, offers spectacular views of Osorno Volcano and the Puntagudo and Tronador mountain peaks when the weather is clear. There'll be time for lunch (not included) in Peulla, before heading off again by bus to Puerto Frías. Complete the Customs procedures to exit Chile and enter Argentina. Cross the Andes (altitude 976m) and descend to Puerto Frías for the onward cruise on Lake Frías to Puerto Alegre. Continue by bus to Puerto Blest and board your final cruise of the day on Lake Nahuel Huapi to Puerto Panuelo. The final leg is a scenic bus ride along the shores of Lake Nahuel Huapi, taking in the lovely flower gardens and Swiss-style architecture that characterizes this area, arriving to Bariloche in the early evening. *Please note the schedule is for guidance only and may change according to weather conditions and the number of passengers. There is also a boarding tax that must be paid locally for lake crossing services (approximately US\$5 / AR\$50 payable only in cash). Admission to Petrohue Falls (approximately US\$18) and has been pre-paid. You will receive tickets locally.



TRIP CODE

MCTSLA

DEPARTURE

Daily

DURATION

7 Days

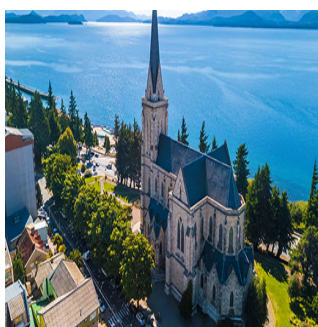
LOCATIONS

Chile, Argentina, Patagonia



DAY 6: Bariloche: Free Day

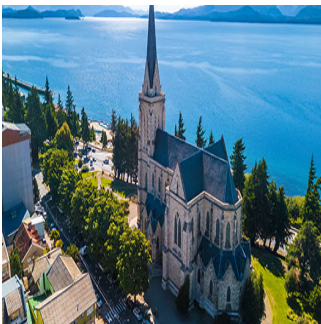
Today is free to enjoy the wonderful city of San Carlos de Bariloche and the surroundings.



SOUTH AMERICA - LAKES ADVENTURE

DAY 7: Transfer to the airport for onward destination

You will be collected from your hotel at the appropriate time and transferred to the airport for your onward flight.



Inclusions & Details	
Accommodation	Hotel accommodation
Inclusions	Private airport transfers Internal flights Accommodation with breakfast Tours as detailed in itinerary Other meals where stated Exclusions: Personal Expenses Visa and reciprocity fees (if applicable) International flights Tips for guides and drivers Any items not mentioned as included
Difficulty Rating	2 (light adventure)
Single Surcharge	Available on request. Contact us for more details.
Notes	All entrance fees are subject to change without prior notice. This is a Tailor-Made itinerary which can be customised to create your own unique journey. Contact us to discuss your travel plans.
Price Dependent upon	Season and availability.

Sustainability

Being environmentally accountable is a crucial part of our organisation. Chimu is currently striving towards using less paper, taking several initiatives to do so and tracking our progress along the way. Our goal: A paperless organisation. For this reason, all information given to you will be sent electronically. We encourage those who choose to travel with us to support our aspirations and actions and ask that you reconsider

TRIP CODE
MCTSLA
DEPARTURE
Daily
DURATION
7 Days
LOCATIONS
Chile, Argentina, Patagonia

SOUTH AMERICA - LAKES ADVENTURE

printing out documentation. To view these documents, you can download them to your iPad or portable computer before and during your trip.

Chimu is passionate and dedicated to sustainability measures and understands the crucial part sustainability plays within the tourism industry.

We use local guides and office staff to both maximise local employment opportunities and minimise carbon footprint. Local guides also ensure you benefit from the intimate knowledge, passion and culture of the country you're visiting. Our guides are all highly qualified (most with university degrees) or equip with many years of experience and are paid above the standard wage. Whether it be our knowledgeable local guides, locally produced meals or the transport on tour, we do not use imported goods when local products are available. We aim to minimise our impact on the environment and give as much back as possible to the communities we work in.

While visiting the many national parks, heritage sites, museums and landmarks our travellers are encouraged to explore remain culturally aware and sensitive. We further encourage you to buy appropriate souvenirs and discourage the buying of anything wrongfully made or taken from the environment i.e. shells and endangered species products. Information on how you can be environmentally conscious, and travel responsibly will be made available in our Travellers Guides and provided during your travels by guides and staff.

For more information on our sustainability policies, including how we are striving towards being a paperless organisation, click [HERE](#)

TRIP CODE

MCTSLA

DEPARTURE

Daily

DURATION

7 Days

LOCATIONS

Chile, Argentina, Patagonia

