

SOUTH AMERICA - SOUTH AMERICA DISCOVERY



INTRODUCTION

Choose this Tailor-Made itinerary or customise to create your own unique journey. Departs daily to suit your travel plans. Price based on Standard accommodation. Superior or Deluxe also available.

This 18-day trip begins in the Peruvian capital of Lima. From there, travel to Cusco to see the ancient Incan ruins of Ollantaytambo and Machu Picchu. Take a bus to Puno where you will explore Lake Titicaca before and then return to Lima to make the journey to Rio de Janeiro.

Enjoy three days in beautiful Rio de Janeiro before flying Iguazu Falls and explore both sides of the falls. End your trip in beautiful Buenos Aires.

ITINERARY

DAY 1: Arrival transfer in Lima

On arrival, please make your way through to the Arrivals Hall where our representative will be waiting for you to transfer you to your hotel. This service includes a driver and local English speaking guide, who will provide you with any useful information needed for your stay. He/she will be holding a sign with your name on it. Should you not be able to locate them, please refer to the front of your itinerary for emergency contact details of our representative office.



TRIP CODE

MCTSSAD

DEPARTURE

Daily

DURATION

18 Days

LOCATIONS

Peru, Machu Picchu, Argentina, Brazil



SOUTH AMERICA - SOUTH AMERICA DISCOVERY

DAY 1: Lima

Lima, the capital of Peru, sits on the country's arid Pacific coast. Founded in 1535, its colonial centre is well preserved, but today Lima is a bustling metropolis and one of South America's largest cities. The city is home to the various museums including the Museo Larco that houses a collection of pre-Columbian art and the Museo de la Nación, tracing the history of Peru's ancient civilizations. Lima is known as the "gastronomical capital of the Americas", encompassing specialties from ceviche and traditional coastal cooking to refined global fare. It even boasts several of the top restaurants in the world. If you have any free days during your stay, we recommend that you take a visit to the Larcomar shopping centre. Located on a cliff with spectacular views of the Pacific Ocean in the heart of Lima's Miraflores district, it is worth the visit. You can either walk from Barranco or have your hotel arrange a taxi for you. Additionally, Huacra Pucllana is a massive adobe and clay pyramid built between 200 and 700 AD. It served as an important ceremonial and administrative centre for the advancement of Lima culture, constructed from seven staggered platforms. Take a taxi to this amazing site in Miraflores (closed on Tuesday's). You can take a tour upon arrival, or simply admire the structure while sipping a coffee or a pisco sour in the lovely Peruvian restaurant overlooking the site (open for lunch until 3pm). Or if you are interested in history and archaeology, a visit to the one-of-a-kind private Museo Larco could be an unforgettable experience. Discover over 5000 years of ancient Peruvian civilisations and the intimate bond that existed between pre-Columbian societies and the natural world. Open daily, however it is a good idea to check if a guided tour in English is available prior to visiting.



TRIP CODE

MCTSSAD

DEPARTURE

Daily

DURATION

18 Days

LOCATIONS

Peru, Machu Picchu, Argentina, Brazil



SOUTH AMERICA - SOUTH AMERICA DISCOVERY

DAY 2: Lima Half Day City & Larco Museum

Today you will be collected from your hotel for a half day city tour of Lima. First you will visit the modern district of San Isidro and Miraflores, where you will have a view of the Pacific Ocean from the Parque del Amor (Love Park), then you will continue with your tour of the "City of Kings" which begins in the downtown colonial district. Visit Plaza de Armas where you will see the Government Palace, the Cathedral, the Archbishop's Palace, City Hall as well as the XVII century San Francisco Church the greatest monumental complex of Colonial Art in America and Cultural Heritage of Humanity and catacombs (a World Heritage Site). This is a chance to appreciate Lima's magnificent Colonial architecture as well as vignettes of its pre-Colombian past. Continue to the Larco Herrera Museum, considered to be one of the best museums in Latin America. Features the best and most complete pre-Hispanic gold and silver collections in the world. On completion of this tour, you will be taken to your hotel. Please note this is a small group tour.



DAY 3: Transfer to the airport for onward destination

You will be collected from your hotel at the appropriate time and transferred to the airport for your onward flight.



DAY 3: Cusco Airport to Sacred Valley - Including Tour

On arrival, please make your way through to the Arrivals Hall where our representative will be waiting for you to transfer you to your hotel in the Sacred Valley of the Incas. He/she will be holding a sign with your name on it. Enroute visit the Cochahuasi Wasi and the chance to see Pumas, Condors and Aras. Continue to the Mercado de Urubamba, an authentic local market where the rural people barter for agricultural products and animals.



TRIP CODE

MCTSSAD

DEPARTURE

Daily

DURATION

18 Days

LOCATIONS

Peru, Machu Picchu, Argentina, Brazil



SOUTH AMERICA - SOUTH AMERICA DISCOVERY

DAY 4: Ollantaytambo Ruins

Morning at leisure to enjoy a range of optional tours. This afternoon continue to the Inca archaeological ruin site of Ollantaytambo, visit the town, the shrines and the fortification with its stairs to the sky.



DAY 5: 360 MP Train: Ollantaytambo to Aguas Calientes

Today will be one of your highlights in South America with a visit to Machu Picchu. You will travel by train from Ollantaytambo in the Sacred Valley to Aguas Calientes onboard the scenic 360 Machu Picchu Train. Arriving in one of the world’s most famous ruins after the morning fog and crowds have cleared. On arrival at the train station in Aguas Calientes a representative from the hotel will be waiting to meet you. They will assist in taking your belongings to the hotel before you journey by bus up to Machu Picchu for your guided tour. Entrance times to Machu Picchu must now be pre selected and you can select a route from 4 available circuits on the day. Your first visit must be with a guide and you must stay within your chosen circuit. Each entrance ticket will grant up to 3 hours at the citadel. If you would like to spend more time exploring the ruins we recommend you book an additional entrance ticket. *Please note: Due to limited space for luggage storage on trains, luggage restrictions apply: one bag or backpack (carry-on luggage) with a maximum weight of 5.0 kg/11 lb, measuring no more than 62 linear inches/157 linear cm (height + length + width)



TRIP CODE

MCTSSAD

DEPARTURE

Daily

DURATION

18 Days

LOCATIONS

Peru, Machu Picchu, Argentina, Brazil



SOUTH AMERICA - SOUTH AMERICA DISCOVERY

DAY 5: Machu Picchu Guided Tour

Machu Picchu is a 15th century Inca site, located 2,430 metres above sea level on a mountain ridge above the Sacred Valley. It is the most famous of all Inca sites, but it was not until 1911 that it was brought to the world's attention by the American historian Hiram Bingham. The Incas abandoned the city just prior to Spanish colonisation, the city was never pillaged and as a result the ruins are still in fantastic condition. With its location on a dramatic ridgeline surrounded by sheer cliffs and the Urubamba River on three sides, the city of Machu Picchu is a remarkable place to visit. Machu Picchu was declared a UNESCO World Heritage Site in 1983 and in 2007 it was voted one of the new Seven Wonders of the World. The tour starts with a bus ride from Aguas Calientes to Machu Picchu. You will be astonished at your first view of Machu Picchu, a stunning display of ancient architecture with incredible surroundings. Enjoy a guided shared tour of the ruins. The shared tours will generally take circuit 1 which is the high/short route. You will explore the upper platforms of the site, where you can enjoy a panoramic view over the ruins. You will visit the Guardian's hut and then continue to the Puente del Inca (Incan Gate) and the urban sector of the citadel. Take the path on to the quarry and head on to the Casa Del Inca, Hall of Mirrors and Temple of the Condor. Return by bus to Aguas Calientes village. Please note that shared tours run with a maximum of 8 guests and 1 local expert guide. Please be aware that your tour of Machu Picchu does not include an entry permit to Huayna Picchu (the iconic hill behind the Machu Picchu ruins). If you want to climb Huayna Picchu then you need to pre-book your permit with at least 3 months in advance. Please contact your travel specialist if you would like to do this.



TRIP CODE

MCTSSAD

DEPARTURE

Daily

DURATION

18 Days

LOCATIONS

Peru, Machu Picchu, Argentina, Brazil



DAY 5: 360 Machu Picchu Train: Mapi - Ollanta PM

This afternoon travel by train from Aguas Calientes to Ollantaytambo. *Due to limited space for luggage storage on trains, luggage restrictions apply: one bag or backpack (carry-on luggage) with a maximum weight of 5.0 kg/11 lb, measuring no more than 62 linear inches/157 linear cm (height + length + width)



SOUTH AMERICA - SOUTH AMERICA DISCOVERY

DAY 5: Private Transfer Ollantaytambo - Cusco

Transfer from Ollantaytambo train station in the Sacred Valley to Cusco.



DAY 6: Cusco - City Tour

You will be collected from your hotel for a private sightseeing tour through Cusco, the heart of the Inca Empire. Visit the fascinating Qorikancha Temple of the Sun, the 12-Angled Rock and the Cathedral, built on the ruins of an Inca Palace. From here head to the archaeological remains located around the city, including the fortress of Sacsayhuaman, Qenko (giant rock), the ancient site of Puca Pucara and finally the Water Temple of Tambomachay. On completion of your tour, you will be taken to your hotel. Included in your tour price is the BTG (Tourist Ticket of Cusco) which allows you entrance into 16 attractions around Cusco in ten days.



DAY 7: Transfer to the bus Station

You will be collected from your hotel at the appropriate time and transferred to Cusco bus or train station for your onward journey.



DAY 7: Touristic Bus: Cusco - Puno

This spectacular journey from Cusco to Puno takes you across the Altiplano. This drive will take you through sleepy Andean villages, past spectacular snow-capped mountains, sheer cliffs and rampaging rivers. Stops along the way include the atmospheric towns of Pucara and Andahuaylillas, and the pre-Inca ruin of Raqchi. Lunch is included and you will arrive in Puno in the early evening. The journey will take approximately 10 hours.



TRIP CODE

MCTSSAD

DEPARTURE

Daily

DURATION

18 Days

LOCATIONS

Peru, Machu Picchu, Argentina, Brazil



SOUTH AMERICA - SOUTH AMERICA DISCOVERY

DAY 7: Arrival transfer in Puno

On arrival at Puno bus or train station, you will be met by a representative who will be holding a sign with your name on it, to transfer you to your hotel. Should you have trouble locating him/her, please refer to the front of your itinerary for emergency contact details.



DAY 8: Full Day Tour to Uros & Taquile Islands

Early this morning you will be collected from your hotel and transferred to the port located on Lake Titicaca. Travel by motorboat to the floating reed islands of Uros, situated four kilometres from Puno. Here the locals continue to practice their traditional way of life, living by fishing. The original inhabitants of these floating islands are said to descend from one of the oldest cultures of the Americas. The Uros Islands, as well as the houses on them and the boats used by their inhabitants, are all made from the totora reeds that grow in Lake Titicaca. Optional rides on traditional reed boats can be arranged. Visit two of the 60 islands before continuing on to Taquile Island. The journey to Taquile Island takes approximately two and half hours, giving you the chance to enjoy the spectacular views offered by Lake Titicaca. On arrival at Taquile, hike for around 45 minutes along a long path that gradually ascends to a village with a unique community. The views along the way are incredible. Visit the communal cooperative where there are craft textiles of a high quality. Lunch is served at one of the many local restaurants. After lunch, descend down 500 steps to the main port of the island in time for an afternoon departure back to Puno City. On arrival at the port, you will be transferred to your hotel. Please note this is small group tour.



TRIP CODE

MCTSSAD

DEPARTURE

Daily

DURATION

18 Days

LOCATIONS

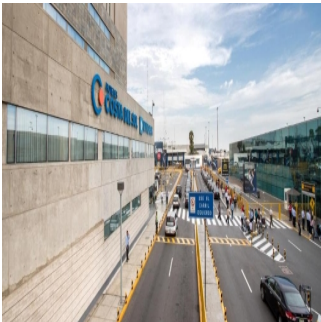
Peru, Machu Picchu, Argentina, Brazil



SOUTH AMERICA - SOUTH AMERICA DISCOVERY

DAY 9: Transfer to the airport for onward destination

You will be collected from your hotel at the appropriate time and transferred to the airport for your onward flight.



DAY 9: Arrive Lima

This evening stay at Lima’s premier airport hotel Wyndham Costa del Sol Airport Hotel which is connected by a walkway to the terminal. Remainder of the day at leisure.



DAY 10: Depart Lima

Please make your way to the terminal for your departure flight. Please note check in time is 3 hours prior to scheduled departure time.



DAY 10: Arrival Transfer in Rio de Janeiro

On arrival, please make your way through to the Arrivals Hall where our representative will be waiting for you to transfer you to your hotel. He/she will be holding a sign with your name on it. Please note this service is with a driver only. Please note, once you arrival at your hotel you will receive a welcome pack, which will provide you with all the useful information you will need about your trip in Brazil.



TRIP CODE
MCTSSAD
DEPARTURE
Daily
DURATION
18 Days
LOCATIONS
Peru, Machu Picchu, Argentina, Brazil

SOUTH AMERICA - SOUTH AMERICA DISCOVERY

DAY 11: Corcovado & Sugarloaf with Lunch

After departing from the hotel, the tour takes a scenic drive from Copacabana beach, continuing along Botafogo beach and passing the Palácio Guanabara, official residence of the State's Governor, on the way to Corcovado Hill (704m), and the greatest national icon - The Christ Redeemer of Rio de Janeiro. Here, you will have time to enjoy panoramic views of Rio and appreciate the giant statue, which was recently named as one of the seven new wonders of the world. From here, the tour continues to the district of Urca and the world-famous Sugar Loaf, where you will board the first cable car to the top of Urca Hill (215m), which offers spectacular views of Guanabara Bay. A second cable car will take you on to the Sugar Loaf (395m), giving you a chance to take in the spectacular 360-degree views of the city and surrounds. Upon descending from the Sugarloaf, we pass through the famous beaches of Copacabana and Ipanema en route to a traditional Brazilian BBQ lunch at a local Churrascaria (lunch is included - all beverages are at your own expense). Following lunch, the tour continues with a visit to the Maracanã Stadium (Bellini's statue and Hall of Fame. Entry into the stadium is not included) and a stop at the Sambadrome. While in the city's historic downtown area, you will have a chance to see the Duque de Caxias Palace, Itamaraty Palace, Tiradentes Square and Lapa Arches, followed by a visit to the Metropolitan Cathedral. From here the tour will also make a quick stop to visit the Selaron Stairs, an amazing urban work of art by the late Jorge Selaron. Returning to the hotel along Aterro do Flamengo, we pass by the Monument to the Fallen in World War II and the beaches of Flamengo and Botafogo. Lunch and all entrance fees (for Corcovado & Sugarloaf) are included.



TRIP CODE

MCTSSAD

DEPARTURE

Daily

DURATION

18 Days

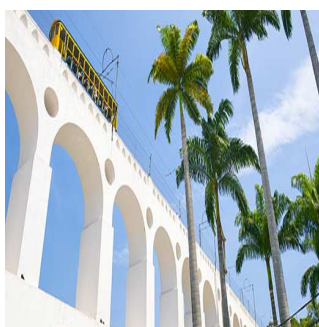
LOCATIONS

Peru, Machu Picchu, Argentina, Brazil



DAY 12: Rio de Janeiro - Free Day

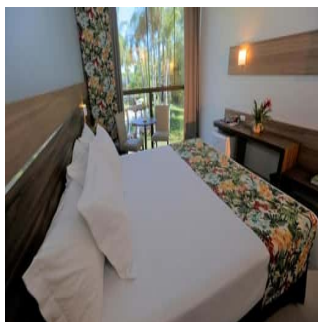
Famed for its breathtaking setting, Rio is undoubtedly one of the most attractive cities in the world. Enjoy your day at leisure by exploring some of its remarkable sites or take the opportunity to relax on one of Rio's famous beaches such as Ipanema or Copacabana.



SOUTH AMERICA - SOUTH AMERICA DISCOVERY

DAY 13: Arrival transfer in Iguazu

On arrival, please make your way through to the Arrivals Hall where our representative will be waiting for you to transfer you to your hotel. He/she will be holding a sign with your name on it. Should you not be able to locate them, please refer to the front of your itinerary for emergency contact details of our representative office. Please note this service includes driver and local English speaking guide.



DAY 13: Iguazu Falls - Argentinean Side

After an early morning pick up from your hotel, we travel to the Argentinean side of the Iguazu Falls. Beginning at the visitor's centre, we take a ride on the Rainforest Ecological train before exploring the upper and lower circuit footbridges. The footbridges, which are raised off the jungle floor, provide panoramic views from above and below the falls. A visit to Devil's Gorge arguably the most spectacular falls, is one of the day's highlights.



DAY 14: Iguazu Falls - Argentinean Side

Early morning pick up from your hotel for your full day of exploring the Argentine side of the falls. This tour always starts early in order to beat the crowds and get the first train to the Devil's Throat. There are walkways over the islands which take you to a balcony over the falls and the most spectacular view of the entire Devil's Gorge. You will then have plenty of time to walk the 800 metres of paths on the upper circuit. These new suspended walkways are detached from the jungle surface so as to protect the fauna by preventing disruption of the natural trails. From this circuit you have a higher sight of the falls, providing you with a magnificent panoramic view. It takes around one hour to cover the upper circuit. The lower circuit contains 600 metres of walkways, also detached from the jungle floor, and has great views from below and around the falls. Once you have finished all the circuits, return to the visitor centre where your vehicles will be waiting to transfer you back to your hotel. Please note there is some degree of difficulty as the path includes many stairs, particularly on the lower circuit. National Park fee is included.



NO IMAGE
AVAILABLE

TRIP CODE

MCTSSAD

DEPARTURE

Daily

DURATION

18 Days

LOCATIONS

Peru, Machu Picchu, Argentina, Brazil



SOUTH AMERICA - SOUTH AMERICA DISCOVERY

DAY 15: Transfer to the airport for onward destination

You will be collected from your hotel at the appropriate time and transferred to the airport for your onward flight.



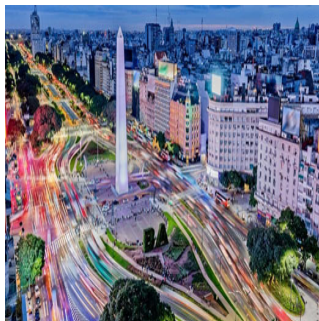
DAY 15: Arrival transfer in Buenos Aires

On arrival, please make your way through to the Arrivals Hall where our representative will be waiting for you to transfer you to your hotel. This service includes a driver and local English speaking guide, who will provide you with any useful information needed for your stay. He/she will be holding a sign with your name on it.



DAY 15: Buenos Aires

Buenos Aires, Argentina's elegant, historic and cosmopolitan capital, is known as the "Paris of the South" due to its European atmosphere with glamorous avenues lined with fashionable shops and Parisian-style restaurants and cafes. Located on the western shore of the estuary of the Río de la Plata, Buenos Aires has many fascinating neighbourhoods to explore including the colourful and lively La Boca, home to art galleries and tango shows; San Telmo with its restored mansions and antique stores and Recoleta, the city's most exclusive area.



TRIP CODE

MCTSSAD

DEPARTURE

Daily

DURATION

18 Days

LOCATIONS

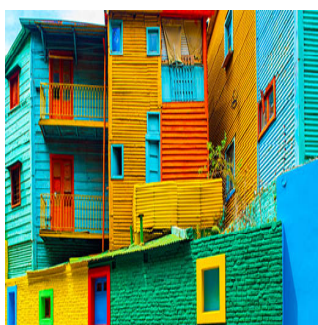
Peru, Machu Picchu, Argentina, Brazil



SOUTH AMERICA - SOUTH AMERICA DISCOVERY

DAY 16: Morning Highlights of Buenos Aires City Tour

You will be collected from your hotel for your three-hour morning tour visiting the most important highlights of the city of Buenos Aires. Discover the history of the Plaza de Mayo Square, the site of Argentina's most important historical events - see its surroundings and the most emblematic buildings and learn all about them. Then enjoy Mayo Avenue and wonder in awe at the oldest residential neighbourhood in Buenos Aires: San Telmo. Live and feel the original Tango in the neighbourhood of La Boca: walk along Caminito Street and enjoy the Dancers and souvenir shops. See the mythical Boca Juniors soccer stadium. Contemplate the modernization of the city whilst traveling along Puerto Madero and its exclusive docks, full of excellent restaurants and large offices. Pass through the Retiro neighbourhood and move on to see Palermo and its most exclusive residential area before finally arriving at Recoleta. The tour comes to an end near the Recoleta Cemetery. Here you can choose to be taken back to the hotel with the group, or to continue unguided into the cemetery, where you can find the final resting place of Eva Peron, "Evita." Please note: This is a small group tour. If you wish to stay behind and visit the Recoleta Cemetery, there is an entrance fee of approximately \$15 USD, payable locally, you would then need to make your own way back to the hotel.



TRIP CODE

MCTSSAD

DEPARTURE

Daily

DURATION

18 Days

LOCATIONS

Peru, Machu Picchu, Argentina, Brazil



SOUTH AMERICA - SOUTH AMERICA DISCOVERY

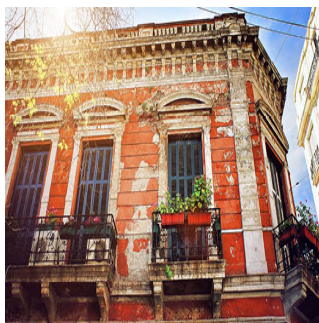
DAY 16: El Querandi Tango Show & Dinner

This evening you will be collected from your hotel to experience a Tango Show with dinner. This is an intimate & passionate tango show, housed in a cozy wood-panelled 19th century building with a colourful history as a meeting point for poets and students in the heart of Buenos Aires's historic centre. After being abandoned in the late 1970s, the bar was restored and reopened in 1992 as El Querandí Tango Hall. The show is directed by Claudio Campos, with musical arrangements by Ado Falasca, and it smoothly charts the history of Argentina's most authentic artistic expression from its origins to the modern day. The dinner is better than many, and at just over an hour long, the show is the perfect length. The three house singers, six dancers and four musicians put on a great show. Dinner will be served from 8.30pm followed by the show commencing at 10.00pm. Please note timings are subject to change and will be confirmed directly to you. On completion of the show, you will be taken to your hotel. Please note this is a small group tour.



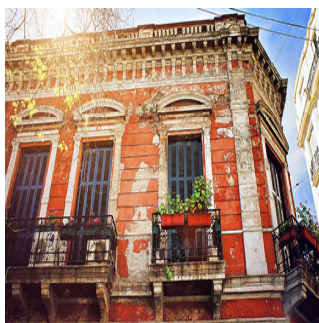
DAY 17: Free day in Buenos Aires

Today is free to enjoy the sights and sounds of this world famous city. Why not enjoy a day trip over the River Plate to the beautiful city of Colonia, Uruguay with its UNESCO World Heritage Listed historic centre, perhaps wander the streets of San Telmo antiques district (home to the famous Sunday markets), enjoy some of the world class shopping or soak up some of Buenos Aires' Parisian atmosphere.



DAY 18: Transfer to the airport for onward destination

You will be collected from your hotel at the appropriate time and transferred to the airport for your onward flight.



TRIP CODE

MCTSSAD

DEPARTURE

Daily

DURATION

18 Days

LOCATIONS

Peru, Machu Picchu, Argentina, Brazil



SOUTH AMERICA - SOUTH AMERICA DISCOVERY

INCLUSIONS & DETAILS

Accommodation	Hotel Accommodation
Inclusions	Airport transfers Internal flights Accommodation with breakfast Tours as detailed in itinerary Other meals where stated EXCLUSIONS: Tips, personal expenses International flights Visas Gratuities for tour guides and drivers Any items not mentioned in the itinerary Travel insurance
Difficulty Rating	3 Light Adventure (High altitude in some areas)
Single Surcharge	Available on request. Contact us for more details.
Notes	All entrance fees are subject to change without prior notice. This is a Tailor-Made itinerary which can be customised to create your own unique journey. Contact us to discuss your travel plans.
Price Dependent upon	Season and availability

TRIP CODE

MCTSSAD

DEPARTURE

Daily

DURATION

18 Days

LOCATIONS

Peru, Machu Picchu, Argentina, Brazil



SUSTAINABILITY

Being environmentally accountable is a crucial part of our organisation. Chimu is currently striving towards using less paper, taking several initiatives to do so and tracking our progress along the way. Our goal: A paperless organisation. For this reason, all information given to you will be sent electronically. We encourage those who choose to travel with us to support our aspirations and actions and ask that you reconsider printing out documentation. To view these documents, you can download them to your iPad or portable computer before and during your trip.

Chimu is passionate and dedicated to sustainability measures and understands the crucial part sustainability plays within the tourism industry.

We use local guides and office staff to both maximise local employment opportunities and minimise carbon footprint. Local guides also ensure you benefit from the intimate knowledge, passion and culture of the country you're visiting. Our guides are all highly qualified (most with university degrees) or equip with many years of experience and are paid above the standard wage. Whether it be our knowledgeable local guides, locally produced meals or the transport on tour, we do not use imported goods when local products are available. We aim to minimise our impact on the environment and give as

SOUTH AMERICA - SOUTH AMERICA DISCOVERY

much back as possible to the communities we work in.

While visiting the many national parks, heritage sites, museums and landmarks our travellers are encouraged to explore remain culturally aware and sensitive. We further encourage you to buy appropriate souvenirs and discourage the buying of anything wrongfully made or taken from the environment i.e. shells and endangered species products. Information on how you can be environmentally conscious, and travel responsibly will be made available in our Travellers Guides and provided during your travels by guides and staff.

For more information on our sustainability policies, including how we are striving towards being a paperless organisation, click [HERE](#)

TRIP CODE

MCTSSAD

DEPARTURE

Daily

DURATION

18 Days

LOCATIONS

Peru, Machu Picchu, Argentina, Brazil

