

ARCTIC - CIRCUMNAVIGATING SVALBARD



INTRODUCTION

Join us for this incredible Arctic circumnavigation of Svalbard, as we aim to sail above 80°N to the ice edge of the Arctic Ocean within 600 nautical miles of the geographical North Pole. Explore the beautiful national parks and nature reserves of Svalbard, with a multitude of possible landing sites and excursions that include hiking, kayaking and traversing a glacier. Bask in the midnight sun as you witness dramatic glaciers, majestic mountains, deep fjords and endless Arctic tundra that make up this untouched Arctic wilderness. With more polar bears than people, Svalbard provides an excellent chance of encountering the iconic King of the Arctic.

ITINERARY

DAY 1: Oslo - Longyearbyen

This Arctic Circumnavigation starts with an evening flight from Oslo. Norway's capital is often called 'the blue, the green and the city in between' because of its idyllic setting, nestled between fjord and forest. Spend a day checking out the museums, parks and intriguing architecture, or relax in one of the many cafés or bars. Then, set foot in an entirely different world when you arrive in Longyearbyen after your flight. This tiny town perched on the edge of the Arctic wilderness is surprisingly cosmopolitan, with first-class facilities, charming architecture, an internationally renowned museum and several bars and restaurants.



TRIP CODE

ACTSROPB

DEPARTURE

06/06/2020, 14/06/2020,
22/06/2020, 17/08/2020

DURATION

10 Days

LOCATIONS

Arctic



ARCTIC - CIRCUMNAVIGATING SVALBARD

DAY 2: Embarkation in Longyearbyen

After an overnight stay in one of our hotels, you can join an exciting excursion to get to know this unique town and the surrounding area. The mighty Arctic wilderness dominates life here, but the town maintains a lively cultural life in spite of its remote position. Longyearbyen is often called an antidote to modern-day life and serves as a prime destination for adventure travelers. Enjoy the singular atmosphere of this colourful frontier outpost before boarding your ship.



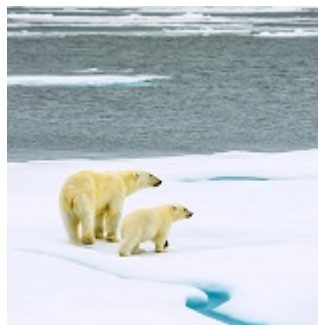
DAY 3: Northwest Spitsbergen National Park - Day 3 & 4

The North West Corner is scattered with rugged islands, beautiful fjords and isolated beaches. This is true wilderness, so the captain will work with the elements to create the best itinerary for your expedition cruise. We may visit Kongsfjorden, which is considered one of the most beautiful fjord areas in Spitsbergen, with mighty glaciers calving icebergs into the sea. We hope to call on the settlement of Ny-Alesund, an international centre for research, that hosts a picturesque mix of old and new buildings. Wherever we explore, the Expedition Team will lead exciting optional ice-cruising and landing activities as we explore further north.



DAY 5: Eastern Svalbard Nature Reserve - Day 5-7

Eastern Svalbard boasts the highest population of polar bears on the archipelago – and we have high hopes of spotting one on this journey! The ocean is full of drifting ice, and we aim to cross 80° N if conditions allow. We hope to sail all the way to Sjuøyane (Seven Islands) at the far north of the archipelago. Heading south, we will sail through the Hinlopen Strait, where thousands of seabirds mate while walrus dive for clams in the bays. We continue towards Edgeoya, the third-largest island in the Svalbard archipelago. On its western shores, the landscape is largely un-glaciated, unlike most other places on the east side of Spitsbergen.



TRIP CODE

ACTSROPB

DEPARTURE

06/06/2020, 14/06/2020,
22/06/2020, 17/08/2020

DURATION

10 Days

LOCATIONS

Arctic



ARCTIC - CIRCUMNAVIGATING SVALBARD

DAY 8: South Spitsbergen National Park

We make our way to the southernmost tip of Spitsbergen, where Hornsund hosts a wonderfully varied landscape and geology. Ice pushed into the fjord early in the season attracts polar bears that hunt on the floes, so with a bit of luck, we may spot some of these magnificent predators



DAY 9: The Isfjord

We will spend the day exploring the Isfjord, the most prominent fjord system on Svalbard. In the inner parts of Isfjorden, the landscape changes constantly. The immense U-shaped valleys, carved out of the mountains by the giant glaciers that covered the area some ten thousand years ago, are home to large populations of Svalbard Reindeer.



DAY 10: Oslo - Longyearbyen

This Arctic Circumnavigation starts with an evening flight from Oslo. Norway's capital is often called 'the blue, the green and the city in between' because of its idyllic setting, nestled between fjord and forest. Spend a day checking out the museums, parks and intriguing architecture, or relax in one of the many cafés or bars. Then, set foot in an entirely different world when you arrive in Longyearbyen after your flight. This tiny town perched on the edge of the Arctic wilderness is surprisingly cosmopolitan, with first-class facilities, charming architecture, an internationally renowned museum and several bars and restaurants.



TRIP CODE

ACTSROPB

DEPARTURE

06/06/2020, 14/06/2020,
22/06/2020, 17/08/2020

DURATION

10 Days

LOCATIONS

Arctic




INCLUSIONS & DETAILS

Accommodation

Standard

ARCTIC - CIRCUMNAVIGATING SVALBARD

Inclusions	Cabin accommodation on board MS Spitsbergen All meals whilst on board All scheduled landings & excursions Guiding & lectures by expedition team and leader Return economy flights between Longyearbyen and Oslo One hotel night in Longyearbyen before the voyage including breakfast and lunch All transfers in Longyearbyen including an excursion before the voyage Wind and water-resistant jacket (yours to keep) Complimentary use of boots during length of voyage
	Exclusions International flights Airport arrival or departure taxes Travel insurance Beverages (other than tea & coffee) Optional activities not mentioned in itinerary Personal expenses such as laundry, on board communication Gratuities for the crew
Difficulty Rating	2 (light adventure)
Single Surcharge	Available upon request, contact us for more details.
Notes	Itinerary is subject to change depending on weather and ice conditions.
Price Dependent upon	Departure date, seasonality & availability.

TRIP CODE
ACTSROPB
DEPARTURE
06/06/2020, 14/06/2020, 22/06/2020, 17/08/2020
DURATION
10 Days
LOCATIONS
Arctic


SUSTAINABILITY

Chimu Adventures undertakes a number of sustainability measures within its operations including:

- 1) Only using local guides and office staff to both maximise local employment opportunities and minimise carbon footprints. Local guides also ensure you benefit from the intimate knowledge, passion and culture of the country you're visiting.
- 2) Where possible, using locally owned and operated boutique hotels to maximise the return to the local community.
- 3) Chimu's "Pass it on" programme has provided funding to hundreds of local community projects in Latin America. Our aim is to empower local communities, helping them to develop their own infrastructure for the future. Since 2006, we have been working with Kiva (a well-known Non-Governmental Organisation), providing hundreds of loans to local businesses all over South America.
- 4) In our pre tour information we provide a range of tips and advice on how to minimise

ARCTIC - CIRCUMNAVIGATING SVALBARD

your impact on both local environments and communities.

5) Chimu Adventures' offices also take a number of sustainability measures including carbon offsets for company vehicles and most staff travel. Chimu Adventure's internal processes are also structures to create a paperless office and to reduce waste. There are also internal programmes to help staff minimise their carbon footprint such as our staff bike purchase assistance plan which encourages office staff to commute to work via bicycle. Currently almost half of our office based staff commute to work via bicycle.

TRIP CODE

ACTSROPB

DEPARTURE

06/06/2020, 14/06/2020,
22/06/2020, 17/08/2020

DURATION

10 Days

LOCATIONS

Arctic

