



**DOOR TO DOOR SERVICE - SAVE UP TO US \$2000
PER PERSON TWIN SHARE- 2 NIGHTS &
TRANSFERS FREE ON SELECT 7-DAY OR MORE
ITINERARIES***

*Door to Door Service: Save up to US\$2000/p twin share- Get 2 Hotel Nights in Quito (or Guayaquil) & transfers free with select 8 & 7-day luxury cruise itineraries. For new bookings only & not combinable with other offers. Valid on selected dates in selected cabin categories only. Limited time only, no set end date at this time, can be pulled at any time by supplier and subject to availability. Please contact us for full details.

ITINERARY

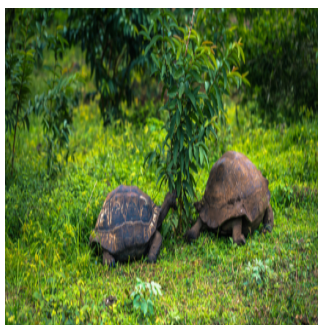
Galapagos Islands, Ecuador



ECUADOR - GALAPAGOS 8 DAY WESTERN ISLANDS | CORMORANT II

DAY 1: Arrive Baltra Airport and Santa Cruz

Morning flight from either Quito or Guayaquil to Galapagos Island. After passing through immigration and baggage claim, you will be met by our representative and transferred to the yacht. You will be shown to your cabin where you will have some time to settle in before lunch and a welcome briefing. In the afternoon, we'll head to the highlands of Santa Cruz, which offer a striking contrast to the dry, lower islands with their deep green color. The dominant vegetation here is the lush forest of Scalesia trees. We'll also explore the surreal experience of walking through over half a mile of underground lava tubes. Later, we'll visit the Charles Darwin Research Station, which is home to turtles ranging from new hatchlings as small as 3 inches to full-grown turtles over 4 feet long. We'll get the chance to see different subspecies of turtles interacting with each other, and even take photos with some of the older turtles that are accustomed to human interaction. The young turtles are kept at the station until they are strong enough to survive on their own in the wild.



DAY 2: Tintorerías Islet and Wetlands

The Tintoreras Islet, located a short distance from Puerto Villamil, is home to a great variety of wildlife. Its turquoise, crystalline waters are inhabited by white-tip reef sharks, Galapagos penguins, marine turtles and sea lions. One of its beaches surrounded by mangroves is one of the few sites where marine iguanas can reproduce successfully. The Wetlands of Isabela Island are located just outside of Puerto Villamil. The Wetlands consist of lagoons, swamps, and mangroves and are home to a variety of unique bird species such as common stilts, whimbrels, white-cheeked pintails, and gallinules. The Wetlands can be visited on foot via a path that winds through the swamps.



TRIP CODE

ECRGC8B

DEPARTURE

Selected Saturdays

DURATION

8 Days

LOCATIONS

Galapagos Islands, Ecuador



Moreno Point is located near Elizabeth Bay on the west coast of Isabela Island. The plethora of birds seen during a dinghy ride along the striking rocky shores or a hike along path through lava rock leading to tide pools and mangroves create a birdwatcher's delight. In the tide pools, green sea turtles or white-tip sharks can be spotted. Elizabeth Bay is located on the east coast of Isabela Island. The bay contains many islets which can be visited by dinghy. Penguins and blue-footed boobies can be spotted on the rocky islets. With an abundance of marine life and clear water, the area is perfect for snorkelling and viewing schools of colourful fish, sea lions, and perhaps even sharks.



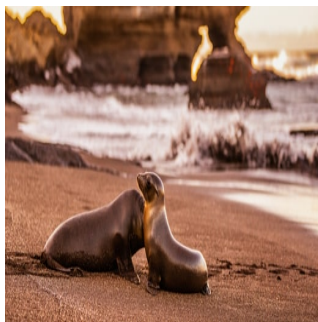
In the morning you will arrive at Espinosa Point. No foreign species have ever invaded Fernandina Island, and therefore it is one of the world's most pristine island ecosystems. The volcano "La Cumbre" dominates the landscape with lava fields reaching the ocean. The island's highlight features the flightless cormorant nesting site. This area provides a great opportunity to see the Galapagos hawk. In the afternoon you will make your way for Vicente Roca Point. Located on the north-western coast of the island and comprised of two separate coves, this site is a large bay with spectacular sea life. Seahorses, sea turtles, and the strange yet fascinating Mola mola (sunfish) may be spotted here. This bay is great for diving and snorkeling.



Galapagos Islands, Ecuador



In the morning, we will head to Egas Port, which is also referred to as James Bay. This area is a habitat for the inquisitive Galapagos hawks and agile Galapagos lava lizards. The path leads to a stunning shoreline with exquisite tide pools and grottos teeming with wildlife. You can observe the Galapagos fur sea lions basking in the sun. Additionally, this spot offers fantastic snorkeling opportunities. In the afternoon, we will visit Espumilla Beach, which is well-known for its marine iguanas and Sally Lightfoot crabs. These crabs attract the hunting herons, who put on a fascinating display of predator and prey. With an abundance of marine life such as octopi, moray eels, and sharks, it's highly recommended to go snorkeling.



In the morning, we will visit Bartholomew Island, which is renowned for its iconic Pinnacle Rock. This island is home to an extinct volcano, which features an array of volcanic formations in red, orange, black, and even green hues. The ascent to the summit of the volcano involves a staircase, which provides one of the best island views. The beach on the island is ideal for snorkeling and offers a chance to spot the Galapagos penguin. In the afternoon, we will make a coral beach landing, which leads to a vast lava field that stretches as far as the eye can see. As you navigate through the distinct types of lava, pahoehoe and 'a'a, you may spot plant life that has managed to emerge over the last century since the most recent volcanic eruption. This is a truly remarkable experience to observe the volcanic terrain up close and personal.



ECRGC8B

DEPARTURE

Selected Saturdays

DURATION

8 Days

LOCATIONS

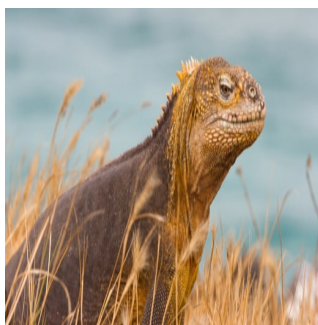
Galapagos Islands, Ecuador



ECUADOR - GALAPAGOS 8 DAY WESTERN ISLANDS | CORMORANT II

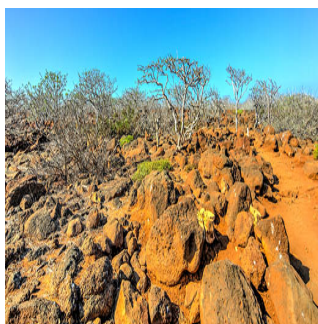
DAY 7: Chinese hat and dragon hill

In the morning, we will set off to explore a small islet located near the southeast coast of Santiago Island. This islet, known for its distinct summit shape, is a geological wonderland waiting to be explored. You'll have the chance to see various fascinating formations, including lava tubes and lava flows. The island is also home to an array of unique wildlife, such as the marine iguana and lava lizard, which are sure to amaze you. Keep your eyes peeled for the incredible Galapagos hawk, which often flies overhead, and the curious Galapagos fur sea lion, which basks on the surrounding rocks. After an exciting morning of exploration, we will head to Dragon Hill, one of the newest visitor sites accessible to tourists in the Galapagos Islands. This magnificent site, situated on Santa Cruz Island, boasts a beautiful walking trail that leads you along a pristine beach and through a lush landscape filled with towering cacti. The trail culminates at the top of a hill, where you will be rewarded with breathtaking panoramic views of the island and the surrounding sea. Along the way, keep an eye out for the colorful flamingos, pintail ducks, and land iguanas that can be spotted around the lagoon. This is an unforgettable experience that provides a unique insight into the diverse flora and fauna of the Galapagos Islands.



DAY 8: North Seymour Island and Departure

In the morning you will arrive at North Seymour Island. The Galapagos sea lions, blue-footed boobies and magnificent frigatebirds are abundant on North Seymour Island. The island was formed by a series of submarine lava containing layers of sediment that were uplifted by tectonic activity. The island is characterized by its arid vegetation zone. Afterward, you will be transferred to Baltra Airport where you will board your departing flight. *Itineraries are unlikely to change significantly but are subject to change. Weather, wildlife breeding, safety concerns, instructions from the Galapagos National Park, specific abilities and interests of passengers as well as operational matters may cause your guide or captain to change the time or nature of visits. Your guide and captain will always Endeavor to select the best itinerary within these limits

**TRIP CODE**

ECRGC8B

DEPARTURE

Selected Saturdays

DURATION

8 Days

LOCATIONS

Galapagos Islands, Ecuador



Cabin on board ship

INCLUSIONS

- Cabin Accommodation on board ship
- All meals whilst on board
- Guiding and lectures by bilingual national park guide
- Airport transfers in Galapagos
- Captain's welcome and farewell cocktail
- Soft drinks
- Use of snorkelling equipment, underwater camera and wetsuit
- VIP lounge at Galapagos airports for departure flight
- 2 glasses of house wine per meal

Inclusions

EXCLUSIONS

- International flights
- Flights to/from Galapagos
- Galapagos National Park Entrance fee (US\$200 per person from Aug 2024 - Subject to change)
- Galapagos Transit Control Card (US\$20 per person - Subject to change)
- Visa and reciprocity fees (if applicable)
- Alcoholic drinks
- Travel and medical insurance
- Personal expenses
- Tips

Difficulty Rating

2 (light adventure)

Single Surcharge

A single supplement surcharge applies and is subject to availability. Please contact us for more information.

Notes

All entrance fees are subject to change without prior notice.
Itinerary is subject to change depending on weather conditions and government regulations.
Please note a complimentary pre-cruise night accommodation in Quito or Guayaquil is only available when purchasing Roundtrip airfare from operator.

Price Dependent upon

Seasonality, fuel surcharges, currency fluctuations and availability at time of booking.

TRIP CODE

ECRGC8B

DEPARTURE

Selected Saturdays

DURATION

8 Days

LOCATIONS

Galapagos Islands, Ecuador



SUSTAINABILITY

Being environmentally accountable is a crucial part of our organisation. Chimu is currently striving towards using less paper, taking several initiatives to do so and tracking our progress along the way. Our goal: A paperless organisation. For this reason,

