



**TRIP CODE**

ACQEGAD

**DEPARTURE**

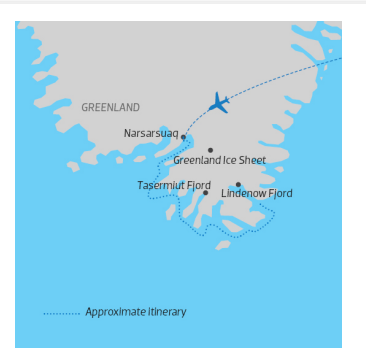
14/07/2023, 21/07/2023

**DURATION**

9 Days

**LOCATIONS**

Arctic, Greenland



**INTRODUCTION**

**FREE TRANSFER PACKAGE ON SELECTED 2023 DEPARTURES**

**SAVE UP TO 25% ON SELECTED 2023 DEPARTURES & CABINS**

Discover the unique sights of Greenland on an incredible adventure catered to an array of adventure activities. On board Ultramarine one of the worlds latest polar exploration vessels, you will experience a one of a kind journey into the stark yet majestic landscapes of the worlds second largest ice mass. Ascend through coastal glaciers in helicopters, cruise through immense fjords in supreme comfort and hike through extensive mountain ranges.

*\*Offers are correct at the time of publishing and are only available for sale on selected cabins and departures until 03 April 2023 or until sold out. Discounts are subject to change, availability will be confirmed at time of booking. Only combinable with Shackleton Club Past Passenger offers. Free Transfer offer is combinable with in market promotions. Free Transfer Package available on 14 & 21 Jul 2023 departures, subject to availability and until sold out. Prices are subject to change based on currency fluctuations, fuel surcharges, and other external factors. No discount applies to additional activities or pre/post services and transfer packages unless otherwise noted. Excludes Triple and Single Cabins. The below prices may also include a 'Pay in full at time of booking' which is a 5-10% early payment bonus. Further conditions may apply,, [contact us](#) for more information.*

**ITINERARY**

## THE ARCTIC - GREENLAND ADVENTURE: EXPLORE BY LAND, SEA & AIR | ULTRAMARINE

### DAY 1: Embarkation Day

Your Arctic expedition begins in Reykjavik, Iceland. Meet us at the airport to take our private charter flight from the Icelandic capital to Narsarsuaq, Greenland, where you'll embark your ship. A scenic village deep in the Tunulliarfik Fjord, Narsarsuaq is the gateway to South Greenland, surrounded by several Norse sites and hiking trails. Get ready for a great adventure ahead!



### TRIP CODE

ACQEGAD

### DEPARTURE

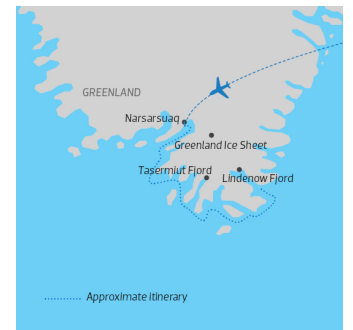
14/07/2023, 21/07/2023

### DURATION

9 Days

### LOCATIONS

Arctic, Greenland




# THE ARCTIC - GREENLAND ADVENTURE: EXPLORE BY LAND, SEA & AIR | ULTRAMARINE

## DAY 2: Exploring Southern Greenland - Day 2 to 7

Nicknamed “Arctic Patagonia,” South Greenland is a region as rich in spectacular scenery as it is in history. Here, it’s easy to see why Erik the Red gave Greenland its name: Everywhere you look rewards with vistas of icy blue waters set against a breathtaking backdrop of dramatic fjords, winding coastline, crystal-clear waterfalls, and lush, verdant valleys and pastures bursting with blooms. Boasting the greatest variety of landscapes in the country, coupled with the most serene, sheltered waterways surrounded by soaring, snow-capped mountains, Greenland’s southern tip is an adventure seeker’s paradise, whether you’re a newbie kayaker or hardcore hiker. Cruising in sublime comfort aboard the newest ship in our fleet, Ultramarine, we’ll base ourselves in and around the majestic fjords that dominate the south and southeastern coasts, sailing deeper and exploring farther than ever before. Designed to give polar adventurers unprecedented access to the hardest-to-reach places on the planet—and equipped with kayaks, mountain bikes and two onboard twin-engine helicopters for unparalleled access to areas only Quark Expeditions can bring you—this one-of-a-kind ship, in its inaugural year, will take you beyond the familiar in polar exploration for an ultra-immersive, ultra-adventurous Greenland experience. A first in polar adventure travel, this expedition has been developed sustainably in collaboration with municipal, regional and national partners to offer you the most extensive array of adventure activities (many of which are included), allowing you to curate an authentic Greenland active adventure that best suits you! Imagine checking off immersive bucket-list activities like paddle excursions, shore landings and Zodiac cruising in such spectacular surroundings. And thanks to our onboard helicopters, you’ll also discover the ultimate polar expedition experience: As stunning as polar landscapes are from your ship, they’re even more striking from the air. Conditions permitting, you may have opportunities for a heli-landing on the Greenland ice sheet and heli-hiking (flying to places we could not otherwise access for hikes suitable for all skill levels), exciting included options that are unique to Ultramarine and give you an awe-inspiring polar experience like no other. Since each expedition presents new opportunities and different weather and ice conditions, no two polar voyages are alike. This voyage in particular has no fixed itinerary, which will allow your Expedition Team and our local partners to craft a voyage that provides you with the best experiences that South Greenland can offer by closely monitoring the local weather and ice conditions. Each day, your Expedition Team will plan excursions deep in the southern fjord systems. With the expertise of local partners, we will be able to showcase lesser-visited areas and take advantage of all that this polar paradise has to offer. Your ship will continually be on the move as your Expedition Team searches for the most ideal places to venture ashore, dip our kayaks and Zodiacs in the water, or deploy our helicopters for more in-depth exploration. Every day will be a new adventure, exploring a new fjord. Throughout your journey, you’ll head out in small, intimate groups with similar interests, multiple times a day, to some of the most remote, isolated areas of South Greenland. Here, you’ll truly unplug, recharge and experience the transformative power of travel, at your own pace. One day, you may hop in a helicopter to hike around the scenic alpine areas while quietly around the



<b>TRIP CODE</b>
ACQEGAD
<b>DEPARTURE</b>
14/07/2023, 21/07/2023
<b>DURATION</b>
9 Days
<b>LOCATIONS</b>
Arctic, Greenland


## THE ARCTIC - GREENLAND ADVENTURE: EXPLORE BY LAND, SEA & AIR | ULTRAMARINE

### DAY 8: Disembark and Fly to Reykjavik

Before you depart on your charter flight back to Reykjavik in the early evening, we hope to spend the day visiting the sites surrounding Narsarsuaq. Possible destinations include the villages of Igaliku, where you can wander the ruins of the Gardar cathedral, the largest church in Greenland in the Middle Ages. We may also stop at Brattahlíð to explore the remains of Erik the Red's estate. Upon landing back at Reykjavik's international airport, you will be transferred to a hotel in nearby Keflavik.



### DAY 9: Depart Reykjavik

Today, you can make your way home at your leisure or spend time exploring this vibrant city.



### TRIP CODE

ACQEGAD

### DEPARTURE

14/07/2023, 21/07/2023

### DURATION

9 Days

### LOCATIONS

Arctic, Greenland



## INCLUSIONS & DETAILS

### Accommodation

Cabin

### Inclusions

Cabin accommodation on board ship  
 All meals whilst on board  
 All scheduled landings and excursions  
 Guiding and leadership by expert exploration team and crew

#### Exclusions

International flights  
 Visa fees (if applicable)  
 Travel Insurance  
 Beverages (other than tea and coffee)

#### Mandatory Transfer Package:

- Charter flights between Reykjavik and Narsarsuaq
- Group transfers between the Narsarsuaq airport and the ship
- Group transfer from Reykjavik airport (Keflavik) to hotel on disembarkation day
- One night's post-expedition airport hotel accommodation in Keflavik
- Shuttle transfer to Keflavik airport on last day of itinerary

### Difficulty Rating

2 (light adventure)

### Single Surcharge

Available upon request

# THE ARCTIC - GREENLAND ADVENTURE: EXPLORE BY LAND, SEA & AIR | ULTRAMARINE

<b>Notes</b>	Please note this itinerary is subject to weather and ice conditions.
<b>Price Dependent upon</b>	Departure date, season and availability.

## SUSTAINABILITY

Chimu Adventures undertakes a number of sustainability measures within its operations including:

- 1) Only using local guides and office staff to both maximise local employment opportunities and minimise carbon footprints. Local guides also ensure you benefit from the intimate knowledge, passion and culture of the country you're visiting.
- 2) Where possible, using locally owned and operated boutique hotels to maximise the return to the local community.
- 3) Chimu's "Pass it on" programme has provided funding to hundreds of local community projects in Latin America. Our aim is to empower local communities, helping them to develop their own infrastructure for the future. Since 2006, we have been working with Kiva (a well-known Non-Governmental Organisation), providing hundreds of loans to local businesses all over South America.
- 4) In our pre tour information we provide a range of tips and advice on how to minimise your impact on both local environments and communities.
- 5) Chimu Adventures' offices also take a number of sustainability measures including carbon offsets for company vehicles and most staff travel. Chimu Adventure's internal processes are also structured to create a paperless office and to reduce waste. There are also internal programmes to help staff minimise their carbon footprint such as our staff bike purchase assistance plan which encourages office staff to commute to work via bicycle. Currently almost half of our office based staff commute to work via bicycle.

<b>TRIP CODE</b>
ACQEGAD
<b>DEPARTURE</b>
14/07/2023, 21/07/2023
<b>DURATION</b>
9 Days
<b>LOCATIONS</b>
Arctic, Greenland
