

ESSENTIAL GREENLAND | ULTRAMARINE



INTRODUCTION

Explore the very best of Greenland's expedition coast on board the newest polar expedition vessel, the ultramarine. Experience dramatic fjords, icy waters, towering glaciers and deep glaciers. From the southern coasts to the spectacular Disko Bay you will encounter incredible scenery, visit traditional picturesque villages and see ancient Norse ruins. This expedition will perfectly combine distinct and isolated landscapes with lush culture and history.

**Offers are correct at the time of publishing and are available for sale on selected cabins and departure dates until 04 July 2023 or sold out. Discounts are subject to change, availability will be confirmed at time of booking. Current in market offers may be combinable and Shackleton Club Past Passenger and multi trip discounts may be applied subject to confirmation at the time of booking. Prices are subject to change based on currency fluctuations, fuel surcharges, and other external factors. No discount applies to any transfer packages, additional activities or pre/post services. Please enquire for Single and Triple Cabin promotions. The advertised prices may also include a 'Pay in full at time of booking' which is a 5-10% early payment bonus. Further conditions may apply, [contact us](#) for more information.*

ITINERARY

TRIP CODE

ACQEEGU

DEPARTURE

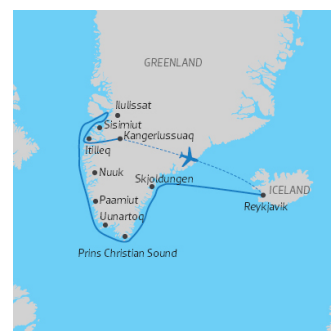
29/06/2023

DURATION

15 Days

LOCATIONS

Greenland



ESSENTIAL GREENLAND | ULTRAMARINE

DAY 1: Arrival in Reykjavik

Arrive in the Icelandic capital and make your way to your included hotel. You will have the rest of the day to explore the city on your own.



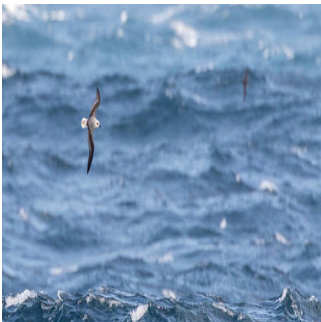
DAY 2: Embarkation in Reykjavik

This afternoon, you'll board your vessel and begin your expedition. Get ready for a great adventure ahead!



DAY 3: At Sea

As we cruise across the Denmark Strait, your Expedition Team will teach you about the wildlife and enthralling history of Greenland, its fascinating geology, ecology and climate, and the incredible sights you will soon explore. Staff will also keep watch for the seabirds you'll likely see soaring around your ship, as well as the whales that can be encountered here.



TRIP CODE

ACQEEGU

DEPARTURE

29/06/2023

DURATION

15 Days

LOCATIONS

Greenland



ESSENTIAL GREENLAND | ULTRAMARINE

DAY 4: East Greenland - Day 4 to 5

Your exploration of Greenland begins with East Greenland, one of the least visited and most remote parts of the island. Your days sailing along the coast will be guided by weather and ice conditions, with each day and each excursion presenting new adventures. The region is a sight to behold, boasting a mesmerizing maze of vast glaciers, steep mountains and breathtaking fjords. One location we hope to visit if conditions allow is Skjoldungen, where you'll cruise between the mountains to view glaciers deep within the fjords surrounding this island. The narrow part of the fjord provides an ideal place to put our Zodiacs in the water for a more in-depth exploration. If conditions allow, you may also visit the site of an abandoned Inuit settlement, whose inhabitants were relocated to larger, more accessible towns around 1961. Exploring ashore, you'll experience a true Arctic ghost town, complete with abandoned buildings, furniture and even shoes! Hiking the rugged terrain rewards with impressive views of snow-capped mountains, deep green waters and the surprisingly colourful Arctic tundra. This site is prone to insects, however, so have your spray or netting at the ready.



TRIP CODE

ACQEEGU

DEPARTURE

29/06/2023

DURATION

15 Days

LOCATIONS

Greenland



ESSENTIAL GREENLAND | ULTRAMARINE

DAY 6: South Greenland - Day 6 to 7

Sailing on, we'll explore Greenland's fertile southern coast. Nicknamed Arctic Patagonia, this region is as rich in spectacular scenery as it is in history and culture. Here, it's easy to see why Erik the Red gave Greenland its name: everywhere you look rewards with vistas of icy waters set against a backdrop of soaring mountains, crystal-clear waterfalls and unbelievably lush, green valleys. Scattered around the shores of the fjord systems that dominate the area are several small settlements, both ancient and present day, making South Greenland an ideal place to explore. The magical Prins Christian Sund, a complex maze of narrow fjords and channels, is a great place for cruising. You'll explore this stunning sound, home to calving glaciers, jagged mountains and sheer cliffs that plunge dramatically into the water. Sailing through this fjord from the vantage point of your ship or a Zodiac is an exhilarating experience. If conditions allow, venturing ashore provides opportunities for all levels of hiking. The little village of Igaliku, home to about 30 inhabitants, is Greenland's oldest sheep-farming settlement. It's a charming place to go ashore, as sheep peacefully graze on the grass, surrounded by bloom-covered rolling valleys and snow-capped mountains. The area is also known for its storied past, as evidenced by the remarkable red sandstone ruins of the Gardar cathedral (the largest church in Greenland in the Middle Ages) and bishop's residence, which date back to the early 12th century, when Greenland's first bishop was appointed. Wandering the foundations, excavated in 1926, you'll get to see a bit of history firsthand as you learn about this interesting relic of the Viking period. Together with four other historic farming communities, Igaliku is part of a newly established UNESCO World Heritage Site.



TRIP CODE

ACQEEGU

DEPARTURE

29/06/2023

DURATION

15 Days

LOCATIONS

Greenland



ESSENTIAL GREENLAND | ULTRAMARINE

DAY 8: West Greenland - Day 8 to 13

Boasting spectacular glaciers, mountainous landscapes, and vibrant communities, the west coast of Greenland will leave you awestruck. Heading north, each day we hope to take Zodiac excursions from the ship to explore local bays, channels and landing sites, discovering some of the quaint villages dotting the islands and fjords in the region and cruising in some of Greenland's most picturesque places. The west coast is home to Nuuk, the charming Greenlandic capital. You'll have time to wander the streets of the historic Old Nuuk neighborhood and see the Hans Egede Church and Hans Egede statue near the waterfront, both named after the missionary who founded the settlement. History buffs will want to visit the national museum to view the famous Greenlandic mummies, found under a rock outcrop in 1972 by two brothers who were grouse hunting. Sisimiut is another interesting place to go ashore, as there are more sled dogs here than humans. You'll have time to wander the town's historic area, where several 18th-century colonial buildings still stand, including Greenland's oldest surviving church. You'll also be treated to a traditional kayaking demonstration. Experiencing a cultural resurgence, the kayak is Greenland's national symbol and can be traced back over 4,000 years to the Inuit, who used the vessels for hunting and transport.



TRIP CODE

ACQEEGU

DEPARTURE

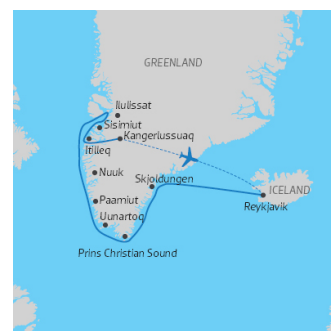
29/06/2023

DURATION

15 Days

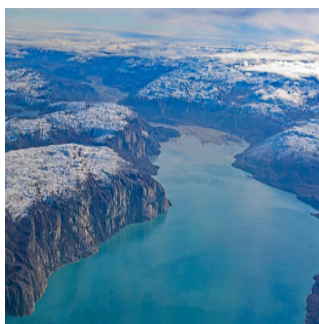
LOCATIONS

Greenland



DAY 14: Kangerlussuaq and Fly Reykjavik

Enjoy one more Zodiac ride to shore, where you'll board your charter flight back to Reykjavik, Iceland. Upon arrival in Reykjavik, we will transfer you to your included hotel.



DAY 15: Depart Reykjavik

Today, you can make your way home at your leisure or spend some time exploring this artistic city.



INCLUSIONS & DETAILS

Accommodation	Cabin on board ship
Inclusions	<p>Cabin accommodation on board vessel All meals on board Leadership and guiding by experienced expedition staff All scheduled landings and excursions by zodiac Complimentary waterproof boots for duration of voyage Expedition parka (yours to keep)</p> <p>Exclusions International flight Visa and reciprocity fees (if applicable) Travel insurance Personal expenses such as telecommunications Any adventure options not listed as included Mandatory Transfer Package:</p> <ul style="list-style-type: none"> • One night's pre-expedition hotel accommodation in Reykjavik • Group transfer from the Reykjavik hotel to the ship on Day 2 • Group transfer from the ship to the Kangerlussuaq airport on disembarkation day • Charter flight from Kangerlussuaq to Reykjavik • Group transfer from Reykjavik airport (Keflavik) to airport hotel • One night's post-expedition airport hotel accommodation in Keflavik • Shuttle transfer to Keflavik airport on last day of the itinerary
Difficulty Rating	2 (light adventure)
Single Surcharge	Available upon request. Contact us for more details.
Notes	Please note this itinerary is subject to change depending on weather and ice conditions.
Price Dependent upon	Departure date, seasonality and availability

SUSTAINABILITY

Being environmentally accountable is a crucial part of our organisation. Chimu is currently striving towards using less paper, taking several initiatives to do so and tracking our progress along the way. Our goal: A paperless organisation. For this reason, all information given to you will be sent electronically. We encourage those who choose

TRIP CODE

ACQEEGU

DEPARTURE

29/06/2023

DURATION

15 Days

LOCATIONS

Greenland



ESSENTIAL GREENLAND | ULTRAMARINE

to travel with us to support our aspirations and actions and ask that you reconsider printing out documentation. To view these documents, you can download them to your iPad or portable computer before and during your trip.

Chimu is passionate and dedicated to sustainability measures and understands the crucial part sustainability plays within the tourism industry.

We use local guides and office staff to both maximise local employment opportunities and minimise carbon footprint. Local guides also ensure you benefit from the intimate knowledge, passion and culture of the country you're visiting. Our guides are all highly qualified (most with university degrees) or equip with many years of experience and are paid above the standard wage. Whether it be our knowledgeable local guides, locally produced meals or the transport on tour, we do not use imported goods when local products are available. We aim to minimise our impact on the environment and give as much back as possible to the communities we work in.

While visiting the many national parks, heritage sites, museums and landmarks our travellers are encouraged to explore whilst remaining culturally aware and sensitive. We further encourage you to buy appropriate souvenirs and discourage the buying of anything wrongfully made or taken from the environment i.e. shells and endangered species products. Information on how you can be environmentally conscious, and travel responsibly will be made available in our Travellers Guides and provided during your travels by guides and staff.

For more information on our sustainability policies, including how we are striving towards being a paperless organisation, click [HERE](#)

TRIP CODE

ACQEEGU

DEPARTURE

29/06/2023

DURATION

15 Days

LOCATIONS

Greenland

