

SOUTH GEORGIA - EXPLORERS & KINGS: FALKLANDS, SOUTH GEORGIA & ANTARCTICA | WORLD EXPLORER




INTRODUCTION

This extended expedition encompasses the wildlife paradise of South Georgia, the remote Falkland Islands (Islas Malvinas), as well as the extraordinary beauty of the Antarctic Peninsula. You'll experience a great diversity of environments and landscapes, which will provide unprecedented wildlife viewing opportunities. Join us for the quintessential Antarctic experience for polar travellers!

**Discounts, promotions and dynamic pricing are capacity controlled and may be withdrawn or changed at any time and subject to availability on selected cabins and departure dates. Discounts are subject to change, availability will be confirmed at time of booking. Current in market offers may be combinable and Shackleton Club Past Passenger and multi trip discounts may be applied subject to confirmation at the time of booking. Prices are subject to change based on currency fluctuations, fuel surcharges, and other external factors. No discount applies to any transfer packages, additional activities or pre/post services.. The advertised prices may also include a 'Pay in full at time of booking' which is a 5-10% early payment bonus. Further conditions may apply, [contact us](#) for more information.*

ITINERARY

TRIP CODE
ACQEKI
DEPARTURE
16/02/2024
DURATION
20 Days
LOCATIONS
Antarctica, South Georgia and Falkland Islands



SOUTH GEORGIA - EXPLORERS & KINGS: FALKLANDS, SOUTH GEORGIA & ANTARCTICA | WORLD EXPLORER

DAY 1: Arrival in Ushuaia

Your gateway for this expedition is Ushuaia, Argentina. Nestled within the Tierra del Fuego archipelago, Ushuaia has a small-town feel yet boasts many shops, museums, cafés and restaurants that you can enjoy before your voyage. If you’re feeling adventurous, the nearby Tierra del Fuego National Park and Martial Glacier offer plenty of outdoor activities, such as hiking.



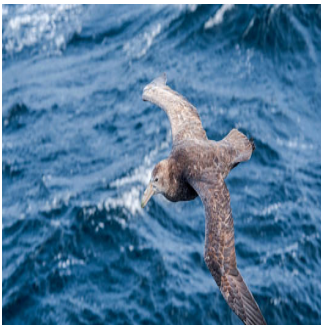
DAY 2: Ushuaia, Argentina and Embarkation

After breakfast at the hotel, the group will transfer to the airport and board our private charter flight to Ushuaia, Argentina. Upon arrival, we’ll take a short city tour of this quaint port town before heading to the pier. Embarkation will occur in the late afternoon, after which your vessel will sail down the historic Beagle Channel. This famous channel transects the Tierra del Fuego archipelago in the extreme south of South America. Expect an air of excitement as you depart—the next time you see land you’ll be in the world’s most southern continent!



DAY 3: At Sea

There are many activities to keep you engaged while you are at sea. Learn to identify seabirds that glide alongside the ship or attend dynamic presentations by your Expedition Team. You will be prepped on safety procedures for your Zodiac cruises and shore landings. You’ll also be given instructions for getting the most out of your optional kayaking adventures, a truly intimate way to experience Antarctica.



TRIP CODE

ACQEKI

DEPARTURE

16/02/2024

DURATION

20 Days

LOCATIONS

Antarctica, South Georgia and Falkland Islands



SOUTH GEORGIA - EXPLORERS & KINGS: FALKLANDS, SOUTH GEORGIA & ANTARCTICA | WORLD EXPLORER

DAY 4: Falkland Islands (Islas Malvinas) Days 4 & 5

Upon arrival in this archipelago your cameras will get their first real workout capturing the abundant wildlife and the rugged feel of the Falklands (Malvinas). The archipelago contains two main islands—East and West, which we will explore by Zodiac excursions and daily landings. Port Stanley is often a favored landing site, as the town offers a unique British outpost feel, complete with a bit of an eclectic charm. You'll be free to explore the town, grab a pint at the local pub, or visit numerous churches and museums. In terms of wildlife, the archipelago is home to magellanic, gentoo and rockhopper penguins. If you're lucky, you may even spot king penguins here as well! You can expect to see blackbrowed albatross and two endemic bird species; Cobb's wren and the Falkland's flightless steamer duck. Your team of lecturers and specialists will be sure to educate you on the local flora and fauna so that you get the most out of your time in the Falklands.



DAY 6: At Sea - Days 6 & 7

Sailing south, you'll officially enter Antarctic waters by crossing the invisible biological boundary called the Antarctic Convergence. Encircling the continent, cold Antarctic waters meet and mix with the warmer waters of the Indian, Pacific and Atlantic Oceans, creating an abundance of krill and marine life that attracts whales and seals to this part of the world. Expedition staff will be sure to keep you posted when you cross this invisible, yet important line.



DAY 8: South Georgia - Days 8 to 11

This remote outpost was a popular stop for many historic Antarctic expeditions and was once a haven for hunting whales and elephant and fur seals. Today, island wildlife populations have rebounded, but you'll still see remnants of old whaling stations and other abandoned outposts.



TRIP CODE

ACQEKI

DEPARTURE

16/02/2024

DURATION

20 Days

LOCATIONS

Antarctica, South Georgia and Falkland Islands



SOUTH GEORGIA - EXPLORERS & KINGS: FALKLANDS, SOUTH GEORGIA & ANTARCTICA | WORLD EXPLORER

DAY 12: At Sea - Days 12 & 13

Say goodbye to the king penguins, as your next destination is Antarctica!



DAY 14: South Shetland Islands - Day 14 to 17

The most common reaction upon reaching the White Continent is a sense of reverence and awe. The experience is hard to put into words, since few places are as untouched, unique and enduring as Antarctica.



DAY 18: Crossing the Drake Passage - Days 18 & 19

After more than two weeks of endless wildlife encounters, your journey home begins. Crossing the Drake Passage is your unofficial rite of passage, completing your Antarctic adventure. Enjoy some final moments mingling with your fellow travelers. The noisy, busy, populated world awaits your return, so savor the silence of the sea as long as you can.



DAY 20: Disembarkation in Ushuaia, Argentina

After breakfast aboard the ship, it is time to part ways and say goodbye to your Expedition Team. After disembarkation, you will have a little time to explore Ushuaia before we transfer to the airport for the return group charter flight to Buenos Aires. *** Important - Please be sure not to book flights out of Ushuaia before 12PM on the day of your cruise departure.



TRIP CODE

ACQEKI

DEPARTURE

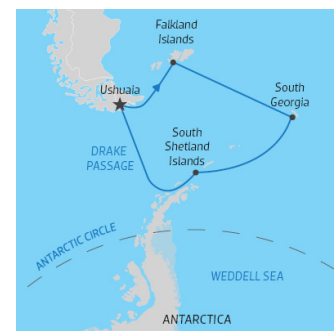
16/02/2024

DURATION

20 Days

LOCATIONS


Antarctica, South Georgia and Falkland Islands



INCLUSIONS & DETAILS

SOUTH GEORGIA - EXPLORERS & KINGS: FALKLANDS, SOUTH GEORGIA & ANTARCTICA | WORLD EXPLORER

Accommodation	Cabin on board ship
Inclusions	<div> <div>INCLUSIONS</div> <div> <p>Shipboard accommodation</p> <p>All meals on board throughout your voyage</p> <p>Beer & Wine during dinner. Coffee,tea and cocoa available around the clock</p> <p>All shore landings per the daily program, weather permitting</p> <p>Presentations by expedition team & special guests.</p> <p>Downloadable photographic journal documenting the expedition</p> <p>Expedition boots on loan for shore landings</p> <p>An expedition parka to keep</p> <p>Hairdryer and bathrobe available in every cabin</p> <p>All miscellaneous service taxes and port charges throughout the program</p> <p>Luggage handling aboard the ship</p> <p>Emergency Evacuation Insurance for all passengers to a maximum benefit of US\$500,000 per person</p> <p>Group transfer in Ushuaia from the airport to the pre-expedition hotel on Day 1 of the itinerary</p> <p>One night pre-expedition hotel accommodation in Ushuaia with breakfast</p> <p>Group transfer from hotel to ship on embarkation day</p> <p>Group transfer from ship to airport or luggage storage facility post-expedition</p> </div> </div> <div> <div>EXCLUSIONS</div> <div> <p>Any airfare unless otherwise specified in the itinerary</p> <p>Passport and visa expenses</p> <p>Government arrival and departure taxes</p> <p>Any meals ashore unless otherwise specified</p> <p>Travel insurance</p> <p>Excess baggage charges</p> <p>Laundry, bar, beverage and other personal charges unless specified</p> <p>Mandatory waterproof pants for Zodiac cruising, or any other gear not mentioned</p> <p>Telecommunications charges</p> <p>Voluntary staff and crew gratuities</p> <p>Optional Adventure Activities</p> </div> </div>
Difficulty Rating	2 (light adventure)
Single Surcharge	Available upon request, contact us for more detail.

TRIP CODE
ACQEKI
DEPARTURE
16/02/2024
DURATION
20 Days
LOCATIONS
Antarctica, South Georgia and Falkland Islands


SOUTH GEORGIA - EXPLORERS & KINGS: FALKLANDS, SOUTH GEORGIA & ANTARCTICA | WORLD EXPLORER

Notes	Please note this itinerary may be subject to change depending on weather and ice conditions.
Price Dependent upon	Departure dates, seasonality, availability & currency fluctuation

SUSTAINABILITY

We appreciate that voyages to the Antarctic to have an impact on this pristine environment. In light of this, all our voyages are double carbon offset. In addition, we strive to eliminate as many single use plastics as possible from our supply chain. In choosing this voyage you are also supporting the fantastic work done by the Antarctic Science Foundation (ASF) and their work in understanding and protecting this unique destination. In addition all voyages support the Mawsons Huts Foundation (MHF). The MHF support the legacy of Sir Douglas Mawson, the legendary Antarctic explorer and scientist. As a member of IAATO we follow strict guidelines appointed by the Antarctic Treaty System to go above and beyond in support of minimizing negative impacts on this pristine landscape. We also encourage clients to look to book pre-and post-accommodation with us, where local businesses will be supported. Our clients also receive restaurant recommendations which support locally owned restaurants.

We carefully select all ships we work with and choose smaller sized vessels to create less impact. We use a highly regulated, licensed vessel which is well equipped to operate in the Antarctic’s delicate ecosystem. We view the voyage to the Antarctic as an expedition, not a sightseeing trip. Smaller ships such as ours can navigate narrow waterways and are far less polluting than the larger ships in Antarctic waters. By carrying less passengers, we have far less waste. The waste is carried back to the home port to allow for environmentally conscious waste management and disposal.

For more information on our sustainability policies, including how we are striving towards being a paperless organisation, click [HERE](#)

TRIP CODE
ACQEKI
DEPARTURE
16/02/2024
DURATION
20 Days
LOCATIONS
Antarctica, South Georgia and Falkland Islands
