

THE RUSSIAN ARCTIC: BETWEEN WRANGEL AND CHUKOTKA



INTRODUCTION

Discover the unforgettable and rugged beauty of the Russian High Arctic on this incredible 13 day expedition. Cruising between Alaska and Russia you will have the unique opportunity to sail the Bering Strait, discovering incredible landscapes combining tundra and taiga landscapes. Listed with UNESCO as a world heritage site, Wrangel Island Reserve is a unique ecosystem where the greatest Arctic biodiversity can be found; walrus, Arctic seabirds and the polar bear call this landscape home.

You will also cruise along Chukotka located between the Chukchi Sea and Bering Strait. One of the most remote and hardly explored places on Earth, Chukotka is home to incredible display of tundra landscape, which evokes a myriad of colours during the Arctic summertime. The region is also home to the local populace of Chukchi, a previously nomadic people, now live a sedentary lifestyle and continue to live mainly of fishing and hunting. If you are lucky we may visit one of the remote Chukchi settlements so that you can interact and learn from these people first hand.

ITINERARY

TRIP CODE

ACPORC

DEPARTURE

20/09/2022

DURATION

12 Days

LOCATIONS

Russian Arctic



THE RUSSIAN ARCTIC: BETWEEN WRANGEL AND CHUKOTKA

DAY 1: Fly Seattle to Nome

Please note your cruise package includes a charter flight from Seattle to Nome, Alaska. The approximate flight duration is 5 hours. We highly recommend you arrive in Seattle the day before this flight. Located along the Bering Strait at the westernmost point of Alaska, Nome offers the rustic charm of a former gold-mining town, set in the middle of magnificent wilderness. As you weave in and out of the brightly coloured houses, you will discover the pioneering legacy that still marks local traditions. Fishing, reindeer rearing, sledge-racing... People here live from their manual labour. The surrounding plains provide stunning vantage points for observing Arctic fauna. Embarkation is scheduled between 4-5pm.



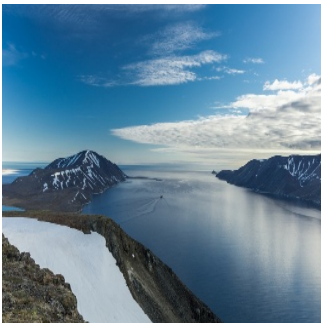
DAY 2: Crossing the International Date Line


Your itinerary enables you to cross the International Date Line. This imaginary line across the Earth’s surface approximately follows the 180th meridian in the Pacific Ocean. Because of the roundness of the Earth and the necessity of having reference time meridians, we have to change dates when we cross this line. So if your ship is travelling west, you will need to add a day to the expected date; conversely, if travelling east, you will take away a day. This paradox, already noted by Magellan’s crews during his circumnavigation, serves as dramatic motivation in several novels, including Jules Verne’s famous Around the World in Eighty Days.



DAY 3: Provideniya

Across the Bering Strait from Alaska, which it almost touches and can be glimpsed when the weather is fine, the town of Provideniya seems to keep a watchful eye over ships heading for the East Siberian Sea. Nestled against mountains with peaks of up to 2,000 m, Provideniya is the gateway to the Chukotka Peninsula, a polar region as yet unknown to the general public, with striking landscapes and a primitive beauty like no other.



TRIP CODE
ACPORC
DEPARTURE
20/09/2022
DURATION
12 Days
LOCATIONS
Russian Arctic


THE RUSSIAN ARCTIC: BETWEEN WRANGEL AND CHUKOTKA

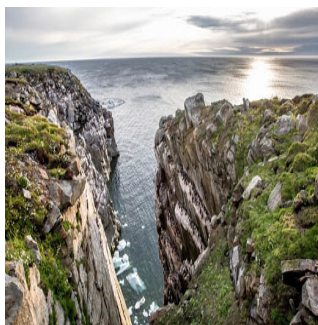
DAY 4: Chukotka

Located between the glacial Arctic Ocean and the Pacific Ocean, on the eastern point of Russia, Chukotka is one of the world's most isolated regions. Made up of vast plains of tundra, which take on magnificent colours in summer, the region is the kingdom of the Chukchi, a nomad people that has now settled. Present on these lands for millennia, they are one of Eastern Siberia's oldest communities and still live from hunting and fishing today.



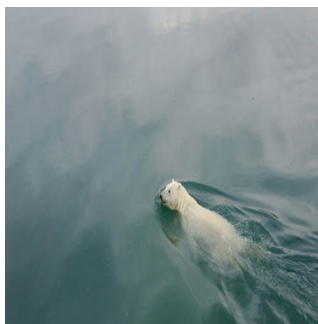
DAY 5: Kolyuchin Island

The northern coast of Chukotka shelters a small inhabited island going by the name of Kolyuchin. During your visit to these parts, you will be able to observe, on the western edge, a former Russian scientific research station, now abandoned. Not far from these buildings rise one of the most spectacular bird cliffs in the Arctic: puffins, gulls, guillemots, cormorants, geese, sandpipers, loons and sandhill cranes all rub feathers here. Walrus, grey whales and polar bears are also part of the décor, as if they wanted to fully complete this typically Arctic tableau in which the tundra, which covers the entire island, welcomes a vast plain dotted with shallow lakes.



DAY 6: Wrangel Island Reserve - Day 6 to 8

Imagine a natural island that is mostly mountainous and, for the rest of its landscapes, alternates between vast tundra plains and areas of great lakes, lagoons and cliffs. Welcome to Wrangel, the most important hotspot of Arctic biodiversity. Situated between the East Siberian Sea and the Chukchi Sea, the island was named after the Russian explorer Ferdinand von Wrangel. Listed as a UNESCO World Heritage Site, the island is a rare, precious and very ancient ecosystem with unique vegetation, as well as an exceptional fauna: it is home to the majestic polar bear and the vast majority of the Russian Arctic's walrus population. The island also holds traces of the last mammoths and is home to several endemic species.



TRIP CODE

ACPORC

DEPARTURE

20/09/2022

DURATION

12 Days

LOCATIONS

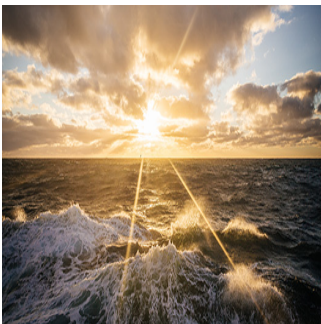
Russian Arctic



THE RUSSIAN ARCTIC: BETWEEN WRANGEL AND CHUKOTKA

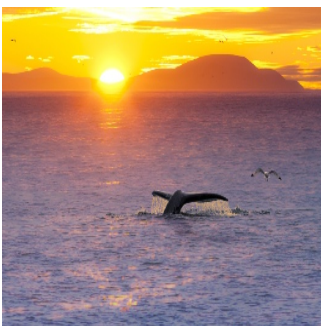
DAY 9: At Sea

The following day will be spent at sea on a return journey toward the Chukotka region.



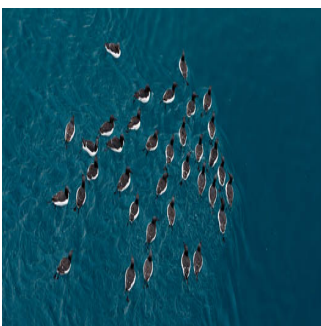
DAY 10: Chukotka Exploration

The following day will be spent exploring the Chukotka region. The dynamic nature of the expedition experience is entirely dependant on the weather and sea conditions. Your team of expert guides will determine the best landing sites for the day.



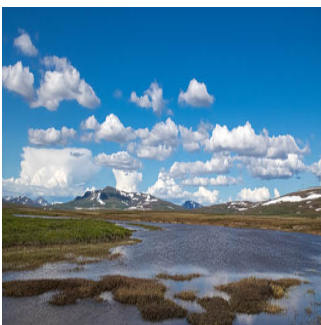
DAY 11: At Sea


The following day will be spent at sea as you return to Nome.



DAY 12: Disembark in Nome and Fly to Seattle

Your grand voyage will come to close as you disembark in Nome in the early morning. Take this final time to bid farewell to your fellow passengers and crew, reflecting on the incredible memories you have made together. Your cruise package includes a return charter flight from Nome to Seattle. The flight duration is approximately 5 hours. We highly recommend you spend the night in Seattle after this flight.



TRIP CODE
ACPORC
DEPARTURE
20/09/2022
DURATION
12 Days
LOCATIONS
Russian Arctic


INCLUSIONS & DETAILS

THE RUSSIAN ARCTIC: BETWEEN WRANGEL AND CHUKOTKA

Accommodation	Cabin on board ship
Inclusions	Cabin accommodation on board vessel All meals whilst on board Charter flight Seattle/Nome + Transfer + Flight Nome/Seattle Guiding and lectures by experienced expedition crew All scheduled landings and excursions by zodiac Landing fees Pre and post cruise and ferry transfers EXCLUSIONS Accommodation in Seattle International Flights All items of a personal nature Customary gratuities for staff/crew Any pre or post cruise travel extensions Travel insurance
Difficulty Rating	2 (light adventure)
Single Surcharge	Available on request. Please contact us for more information.
Notes	Please note this itinerary may be subject to change depending on weather, ice and sea conditions.
Price Dependent upon	Departure date, seasonality and availability.

TRIP CODE
ACPORC
DEPARTURE
20/09/2022
DURATION
12 Days
LOCATIONS
Russian Arctic


SUSTAINABILITY

Being environmentally accountable is a crucial part of our organisation. Chimu is currently striving towards using less paper, taking several initiatives to do so and tracking our progress along the way. Our goal: A paperless organisation. For this reason, all information given to you will be sent electronically. We encourage those who choose to travel with us to support our aspirations and actions and ask that you reconsider printing out documentation. To view these documents, you can download them to your iPad or portable computer before and during your trip.

Chimu is passionate and dedicated to sustainability measures and understands the crucial part sustainability plays within the tourism industry.

We use local guides and office staff to both maximise local employment opportunities and minimise carbon footprint. Local guides also ensure you benefit from the intimate knowledge, passion and culture of the country you're visiting. Our guides are all highly qualified (most with university degrees) or equip with many years of experience and are paid above the standard wage. Whether it be our knowledgeable local guides, locally produced meals or the transport on tour, we do not use imported goods when local products are available. We aim to minimise our impact on the environment and give as much back as possible to the communities we work in.

THE RUSSIAN ARCTIC: BETWEEN WRANGEL AND CHUKOTKA

While visiting the many national parks, heritage sites, museums and landmarks our travellers are encouraged to explore whilst remaining culturally aware and sensitive. We further encourage you to buy appropriate souvenirs and discourage the buying of anything wrongfully made or taken from the environment i.e. shells and endangered species products. Information on how you can be environmentally conscious, and travel responsibly will be made available in our Travellers Guides and provided during your travels by guides and staff.

For more information on our sustainability policies, including how we are striving towards being a paperless organisation, click [HERE](#)

TRIP CODE

ACPORC

DEPARTURE

20/09/2022

DURATION

12 Days

LOCATIONS

Russian Arctic

