

## EXPLORA EL CHALTEN



### INTRODUCTION

The essence of Patagonia is beautifully captured within the numerous experiences undertaken at Explora El Chalten. Opening its doors for the first time in 2021, Explora El Chalten is located just 17km away from El Chalten town, in the Argentinean Patagonia. Located in beautiful territory within the Los Huemules Conservation Range, Explora El Chalten is flanked by snow-capped peaks which give way to beautiful forest paths. In the nearby surrounds you will find immense glaciers, solitary lakes and raging rivers. This lodge serves as a headquarter for which you will undertake a number of exciting adventure activities - nature walks, rock climbs, horseback rides, high mountain ascents and overland explorations will truly allow you to immerse yourself in the unforgettable experiences Patagonia has to offer.

Each experience at Explora El Chalten has been masterfully crafted to unveil the essence of the remote territory. The explorations are varied and offer insight into the regions history, geography and biosphere. Within the lodging, the cuisine is inspired by the deep roots of the Argentinean Patagonia. The spa has been intricately designed to allow you to stop, breathe and recompose. Here at Explora El Chalten, the holistic experience is designed to tell a unique story to each adventurer. Come and discover this journey for yourself.

### ITINERARY

#### TRIP CODE

ARHTEC

#### DEPARTURE

Daily

#### DURATION

4 Days

#### LOCATIONS

Argentina, Patagonia



# EXPLORA EL CHALTEN

## DAY 1: Arrival in Explora El Chalten

Upon arrival in El Calafate you will be met by our local representative and transferred by road to Explora El Chalten. With unforgettable views and access to locations like Electric Valley and the Marconi Glacier. The Explora lodge in El Chaltén has been strategically built within the Los Huemules Conservation Reserve, our long-standing conservation partners in the region. Patagonia is not a country nor a place. It is a vast territory shared by Chile and Argentina, whose remarkable geography -shaped by mountains, glaciers, lakes, and rivers- offers countless exploration opportunities. This afternoon, meet with a guide to discuss your activities for the following day. Dinner and overnight.



## DAY 2: Exploring El Chalten and Surroundings

Explora Atacama have a set of activities where you can choose from onsite, allowing you to create your own personalised experience deep in the incredible surroundings at El Chalten. Below are suggested options you may like to choose from through-out your stay. Hiking Explorations - We hike throughout our locations. Walking at your own, committed pace, allows you to immerse in the natural and cultural landscapes we explore, varying in intensity -beginner- or advanced- and duration - half day to full day. Locations include electrico valley, the Los Glaciares National Park, and the Diablo lagoon Overland - These are van-led explorations interrupted by short-duration hikes along the way. The combination allows travelers to access areas of particular beauty and ecological significance. you may drive to the Perito Moreno Glacier, explore the border of the Las Vueltas river and enjoy incredible views of the Andes Mountains. High Mountain Ascent - We strive to introduce our travelers to truly remote locations - and mountains are one of them. Each one has its own different demands and rewards, yet they all guarantee a revitalizing experience for mind and body alike. You may ascend the Cerro Madsen or the Paso Del Cuadrado to explore incredible perspectives of the greater Patagonia



### TRIP CODE

ARHTEC

### DEPARTURE

Daily

### DURATION

4 Days

### LOCATIONS

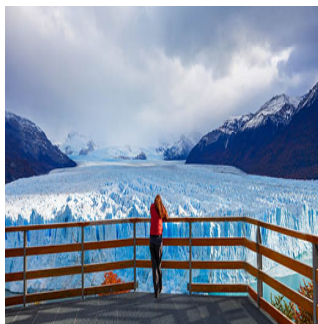
Argentina, Patagonia



## EXPLORA EL CHALTEN

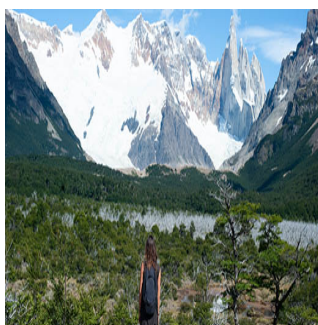
### DAY 3: Exploring El Chalten and Surroundings

Today you will continue the wide array of activities you will undertake in Explora El Chalten. Self Guided - The company and knowledge of one of our guides, is available for you to discover unique locations in the areas surrounding our lodge - either on foot or bicycle. For further information approach your exploration team. You may walk through the Laguna Azul surroundings watching for birds and deer tracks or through Laguna Condor. Climbing - Rock climbing is a form of exploration that can be found throughout the world. At Explora it is seen as a way of truly encountering the territory's essence, which is why we facilitate it on different levels of experience, following the necessary safety requirements.



### DAY 4: Depart Explora El Chalten

This morning you will depart Explora El Chalten. you will be transferred to El Calafate where you may make your own arrangements or join pre-arranged connecting services.



#### TRIP CODE

ARHTEC

#### DEPARTURE

Daily

#### DURATION

4 Days

#### LOCATIONS

Argentina, Patagonia



## INCLUSIONS & DETAILS

#### Accommodation

Cabin on board ship

#### Inclusions

Full board meals and drinks  
All inclusive activities and optional excursions  
Entrance Fee to national parks  
Transfer to/from airport

#### EXCLUSIONS

International airfare  
Pre or post land arrangements  
Visa and reciprocity fees (if applicable)  
Travel Insurance

#### Difficulty Rating

2 (light adventure)

#### Single Surcharge

Available on request. Please contact us for more information.

## EXPLORA EL CHALTEN

**Notes** Not Available

**Price Dependent upon** Departure date, seasonality and availability. Pricing is based for per person.

### SUSTAINABILITY

Chimu Adventures undertakes a number of sustainability measures within its operations including:

- 1) Only using local guides and office staff to both maximise local employment opportunities and minimise carbon footprints. Local guides also ensure you benefit from the intimate knowledge, passion and culture of the country you're visiting.
- 2) Where possible, using locally owned and operated boutique hotels to maximise the return to the local community.
- 3) Chimu's "Pass it on" programme has provided funding to hundreds of local community projects in Latin America. Our aim is to empower local communities, helping them to develop their own infrastructure for the future. Since 2006, we have been working with Kiva (a well-known Non-Governmental Organisation), providing hundreds of loans to local businesses all over South America.
- 4) In our pre tour information we provide a range of tips and advice on how to minimise your impact on both local environments and communities.
- 5) Chimu Adventures' offices also take a number of sustainability measures including carbon offsets for company vehicles and most staff travel. Chimu Adventure's internal processes are also structures to create a paperless office and to reduce waste. There are also internal programmes to help staff minimise their carbon footprint such as our staff bike purchase assistance plan which encourages office staff to commute to work via bicycle. Currently almost half of our office based staff commute to work via bicycle.

#### TRIP CODE

ARHTEC

#### DEPARTURE

Daily

#### DURATION

4 Days

#### LOCATIONS

Argentina, Patagonia

