

ANTARCTICA - ANTARCTICA SMALL SHIP EXPEDITION CRUISE | MAGELLAN EXPLORER



TRIP CODE

ACAXMSSE

DEPARTURE

14/11/2024, 13/03/2025

DURATION

10 Days

LOCATIONS

Antarctica, Antarctic Peninsula



INTRODUCTION

Explore the white continent of Antarctica onboard the modern Magellan Explorer, a modern ship built in 2019. She takes a maximum of 96 guests and is built for expedition purposes. Sail along the infamous Drake Passage to Antarctica. Sail along ice-filled fjords and among spectacular icebergs while enjoying the company of sea birds, penguins, seals, and whales. Each day, disembark by Zodiac boat and explore the landscape together with expert polar guides.

ITINERARY

DAY 1: Embarkation in Ushuaia

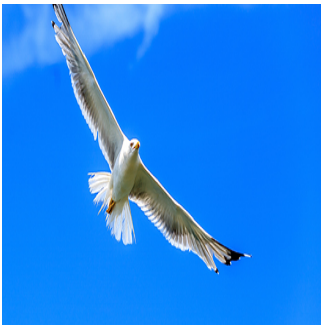
Your journey begins in Ushuaia, Argentina. Board your ship and sail along the Beagle Channel towards Antarctica. Important note: Boarding in Ushuaia is exclusively between 15:00hrs and 16:00hrs. At 16:00hrs, boarding will close. Please be on time. Keep your passport on hand and allow enough time to clear port security and reach the vessel.



ANTARCTICA - ANTARCTICA SMALL SHIP EXPEDITION CRUISE | MAGELLAN EXPLORER

DAY 2: Crossing the Drake Passage

Sail towards Antarctica across the famous passage named in honour of Sir Francis Drake, the great 16th-century British explorer. As you sail enroute to the South Shetland Islands, attend an engaging program of lectures and presentations. In the company of expert guides, watch for wildlife from the glass-enclosed lounge or the outside decks. You may spot magnificent sea birds, such as albatrosses and petrels, as well as different species of whales on their way south to Antarctica. After crossing the Antarctic Convergence, the environment changes noticeably. Keep your camera ready, as this is the time to watch for the first icebergs and the sight of Antarctic land.



DAY 4: Exploring Antarctica

Cruise between the South Shetland Islands and the western coast of the Antarctic Peninsula, sailing along ice-filled fjords and among spectacular icebergs, while enjoying the company of sea birds, penguins, seals and whales. Each day, disembark by Zodiac boat and explore the landscape together with expert polar guides. From the ship enjoy spectacular vistas from the glass-enclosed lounge while sharing your daily adventures with fellow guests. No journey is the same as flexibility is the key to success in Antarctica. The Expedition Team sets the voyage route to take advantage of the ever-changing opportunities provided by Nature, crafting a unique and extraordinary experience each time. While the exact itinerary changes with each expedition, you will explore several locations that offer the best possible overview of the varied Antarctic environment. Your voyage may include visits to sites such as Paulet Island, Hope Bay, Port Lockroy, Petermann Island, Paradise Bay, Deception Island, the Lemaire Channel, or many other magnificent places. Our adventure will be very active, with several daily landings and cruises in Zodiac boats, lectures and a very enjoyable time on board. Departure from Antarctica will be in the afternoon or evening of day 8, depending on weather conditions.



TRIP CODE

ACAXMSSE

DEPARTURE

14/11/2024, 13/03/2025

DURATION

10 Days

LOCATIONS

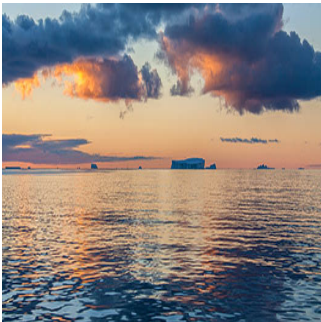
Antarctica, Antarctic Peninsula



ANTARCTICA - ANTARCTICA SMALL SHIP EXPEDITION CRUISE | MAGELLAN EXPLORER

DAY 8: Sailing back to South America

Return to South America with a northbound crossing of the Drake Passage. Relax and take the time to watch for wildlife from the bridge or outside decks.



DAY 10: Disembarkation in Ushuaia

The program ends upon arrival at the port in Ushuaia.



TRIP CODE

ACAXMSSE

DEPARTURE

14/11/2024, 13/03/2025

DURATION

10 Days

LOCATIONS

Antarctica, Antarctic Peninsula




INCLUSIONS & DETAILS

Accommodation

Cabin on board a ship

ANTARCTICA - ANTARCTICA SMALL SHIP EXPEDITION CRUISE | MAGELLAN EXPLORER

Inclusions	Inclusions <ul style="list-style-type: none"> • Accommodation as indicated in the program on the indicated ship of choice. • Daily buffet breakfast and lunch on board ship offering a wide choice of dishes. • Daily served dinner on board ship offering a choice of three main courses. • Wine, beer, juice, and soft drinks served with lunch and dinner on board ship • Coffee, tea, hot chocolate, cappuccino, water and snacks on board ship throughout the expedition. • All guided shore excursions. • Lectures and entertainment on board. • Comprehensive pre- and post-voyage information material. • Loan of waterproof boots for landing in Antarctica. • IAATO passenger fee.
	Exclusions <ul style="list-style-type: none"> • Accommodation, meals, excursions and transfers other than those included in the itinerary and the Contingency Plan corresponding to each voyage. • Beverages purchased at the ship's bar. • Personal insurance. • Extra expenses (communication, laundry, souvenirs, etc.). • Gratuities. • Visas for Chile and/or Argentina, passport expenses, and any arrival and/or departure tax, if applicable. • Optional Activities
Difficulty Rating	2 (light adventure)
Single Surcharge	Available upon request. Please contact us for more details.
Notes	<p>Prices are correct at time of publishing but are subject to change at any time.</p> <p>Prices are based on per person, twin share* (unless otherwise stated for triple/quad cabins)</p> <p>Itinerary is subject to change depending on weather and ice conditions.</p>
Price Dependent upon	Departure Date, Fuel Surcharges, Cabin Category, Currency Fluctuations, Seasonality & Availability.

TRIP CODE
ACAXMSSE
DEPARTURE
14/11/2024, 13/03/2025
DURATION
10 Days
LOCATIONS
Antarctica, Antarctic Peninsula


SUSTAINABILITY