

## ECUADOR - CORMORANT SUPERIOR 8 DAY CRUISE A



### INTRODUCTION

Set sail aboard the beautiful mega catamaran, the M/C Cormorant to discover the spectacular wildlife and landscapes of the Galapagos Islands as you cruise in comfort through the archipelago. Hiking, kayaking, dinghy excursions, swimming and snorkelling allow close encounters with an abundance of land and marine wildlife, including sea lions, frigatebirds, boobies, iguanas, turtles and Galapagos penguins. From the striking formations of Kicker Rock and Pinnacle Rock, to flamingo lagoons, waved albatross breeding sites, tortoise breeding centres and hikes across volcanic lava fields and through forests of prickly pear, every day brings new highlights and incredible photo opportunities. As you cruise from island to island, relax on the sun deck or in the Jacuzzi, or take in the scenery from your own private balcony.

### ITINERARY

#### TRIP CODE

ECTSCS8A

#### DEPARTURE

Selected Saturdays

#### DURATION

8 Days

#### LOCATIONS

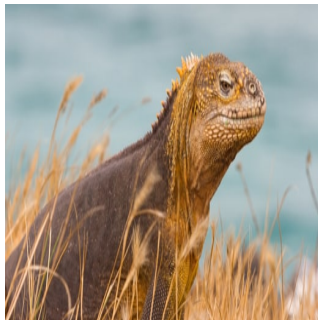
Ecuador, Galapagos  
Islands



## ECUADOR - CORMORANT SUPERIOR 8 DAY CRUISE A

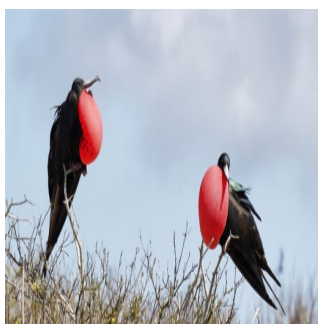
### DAY 1: Santa Cruz Island

You will arrive at Baltra Island in the morning. After passing through immigration and baggage claim, you will be met by our representative and transferred to the yacht. You will be shown to your cabin where you will have some time to settle in before lunch and a welcome briefing. Afternoon's visit is to Bachas Beach, which is located on the north shore of Santa Cruz which is a beach for swimming. One of the few remnants of the U.S. World War II presence in the Galapagos, a floating pier, can be seen here. You may see flamingos, Sally Lightfoot crabs, hermit crabs, blacknecked stilts, and whimbrels. Sea turtles also nest on the beach.



### DAY 2: Genovesa Island

In the morning you will arrive at El Barranco. Also known as Prince Phillip's Steps, El Barranco's steep, rocky paths leads up to a high cliff-face. A marvelous view can be appreciated from here. This site is also home to palo santo vegetation as well as red-footed boobies, short-eared lava owls, Galapagos swallows, and Galapagos doves. In the afternoon, you will move onto Darwin Bay. This white sand coral beach heads a half mile trail (0.75km) that winds through mangroves filled with land birds. Nazca boobies, red-footed boobies, and swallow-tailed gulls can be spotted here. Further down the path are tidal pools where sea lions swim playfully. At the end is a spectacular view off a cliff.



### DAY 3: South Plaza & Santa Fe

In the morning, you will visit South Plaza Island. This small island with steep cliffs was formed by rising lava and is now covered by Opuntia cacti. It is also home to one of the largest sea lion colonies as well as colorful yellow and red land iguanas. The most characteristic plant is the Sesuvium. During the rainy season its color is a greenish to yellowish tone and in the dry season (end of June through January) a bright red. Your afternoon visit is to Santa Fe Island (Barrington) which is home to the small picturesque bay and anchorage on the island's northeast coast. The bay has two visitor trails: one leading to a scenic viewpoint atop a cliff, and the other spanning from a small beach to a tall prickly pear cactus forest.



#### TRIP CODE

ECTSCS8A

#### DEPARTURE

Selected Saturdays

#### DURATION

8 Days

#### LOCATIONS

Ecuador, Galapagos Islands



# ECUADOR - CORMORANT SUPERIOR 8 DAY CRUISE A

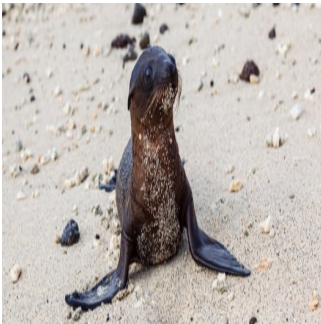
## DAY 4: San Cristobal Island


In the morning, you will visit Pitt Point, situated on the north-eastern tip of the island, hosts frigate birds, storm petrels, and all three types of booby birds: the Nazca, blue-footed and redfooted boobies. A steep trail goes up a cliff and through a ravine leading visitor to an area with an abundance of birds. In the afternoon, you will visit Witch Hill. Located on the northern coast, this eroded hill and its surroundings present one of the most picturesque beaches in the Galapagos with its white powdery sand and the abundance of animals. Wildlife includes sea turtles, rays, and various types of booby birds. The clear water provides an excellent opportunity for enjoying swimming and snorkelling.



## DAY 5: San Cristobal Island

In the morning you will visit the 'David Rodriguez' Breeding Centre. This is a new visitor site in the northeast part of San Cristobal Island and can now be reached in roughly one hour by road from Puerto Baquerizo Moreno. In the Breeding Center, you will be able to admire the hatchling turtles from their birth until the are 120 days old when the grown turtles are taken to their natural habit. Then you will take an excursion to Lobos Island which means "Sea Lion Island." This appropriately named island is ripe with noisy, playful, jolly sea lions who will welcome you to their home with open, well, fins. This island also offers great snorkeling opportunities as well as the chance to see bluefooted and Nazca boobies. In the afternoon, you will visit Kicker Rock. This striking rock formation is located a couple hours off the western shore of San Cristobal. Jutting out of the water, the rocks stand vertically at hundreds of feet above the ocean divided by a small channel. Although there are no landing areas, kayaking and snorkeling allow visitors to spot a variety of marine life.



TRIP CODE
ECTSCS8A
DEPARTURE
Selected Saturdays
DURATION
8 Days
LOCATIONS
Ecuador, Galapagos Islands


## ECUADOR - CORMORANT SUPERIOR 8 DAY CRUISE A

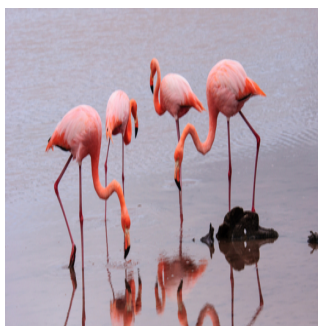
### DAY 6: Espanola Island

In the morning, you will visit Suarez Point. On the trail you will have the chance to spot blue-footed boobies, albatrosses, and Nazca boobies. This island is the breeding site of nearly all of the world's 12,000 pairs of waved albatrosses. You will also visit a beautiful site on the ocean front where there is a cliff that the large albatrosses use as a launching pad! You will have the chance to see the famous blowhole that spurts sea water into the air. The landscape is great for photography. The afternoon excursion takes you to the spectacular Gardner Bay. After landing, you can walk across a lovely white-sand beach amongst a busy sea lion colony or dive into the water to swim with sea lion pups. You may also see curious mockingbirds on the beach.



### DAY 7: Floreana Island

In the morning, you will visit the famous Post Office Bay. You will land on a beach and head to a spot where 18th century whalers placed a wooden barrel used as an unofficial mail box. The custom continues to this day with Galapagos visitors. So, don't forget your postcards, and don't be surprised if the post card arrives to its destination before you even get home! Baroness Viewing Point is a fantastic place to absorb the environment of the Galapagos. Once inhabited by an indulgent baroness and her three lovers, the history of this island is intriguing. The legends about this baroness are associated with a fascinating murder mystery. There are easy trails in this area for exploring the flora and fauna of Floreana. Cormorant Point hosts a large flamingo lagoon where other birds such as common stilts and white cheeked pintails can also be seen. The beaches on this island are distinct: The Green Beach is named so due to its green color, which comes from a high percentage of olivine crystals in the sand, and the Four Sand Beach is composed of white coral. Afterwards, you will visit Champion Islet, named after the whaler Andrew Champion, which is a small island located just offshore Floreana Island in the southern part of the Archipelago, considered as one of the most beautiful places on Galapagos for all snorkeling and diving fans and an excellent opportunity for dolphin watching.



#### TRIP CODE

ECTSCS8A

#### DEPARTURE

Selected Saturdays

#### DURATION

8 Days

#### LOCATIONS

Ecuador, Galapagos  
Islands





# ECUADOR - CORMORANT SUPERIOR 8 DAY CRUISE A

## DAY 8: Santa Cruz Island - Twin Craters & Departure

In the morning you will visit Los Germelos, or the Twin Craters. These craters are located opposite each other on both sides of the road leading from Puerto Ayora to Baltra. The name is only figurative; not real craters, these formations were created by the collapse of surface material in underground fissures and chambers. The view is breathtaking. In the afternoon you will be taken back to Baltra Airport for your departure flight.



### TRIP CODE

ECTSCS8A

### DEPARTURE

Selected Saturdays

### DURATION

8 Days

### LOCATIONS

Ecuador, Galapagos Islands



## INCLUSIONS & DETAILS

Accommodation	Standard
Inclusions	All meals and excursions Transfers in the islands Bilingual National Park Guide Use of snorkellin equipment/wetsuit Use of underwater camera Free Airport Assistance* Hotel night in Quito or Guayaquil (the day before the cruise)* 2 Free transfers to Galapagos Flights* *Applies when purchasing airfare from Royal Galapagos <b>Exclusions</b> Roundtrip airfare to/from Galapagos Alcoholic drinks Galapagos National Park Fee (USD\$100 per person subject to change) Galapagos Transit Control Card (USD\$20 per person subject to change) Travel/Medical insurance Gratuities Personal Expenses
Difficulty Rating	2 (light adventure)
Single Surcharge	Available upon request
Notes	Contact us for more details
Price Dependent upon	Season and availability

## SUSTAINABILITY

## ECUADOR - CORMORANT SUPERIOR 8 DAY CRUISE A

Chimu Adventures undertakes a number of sustainability measures within its operations including:

- 1) Only using local guides and office staff to both maximise local employment opportunities and minimise carbon footprints. Local guides also ensure you benefit from the intimate knowledge, passion and culture of the country you're visiting.
- 2) Where possible, using locally owned and operated boutique hotels to maximise the return to the local community.
- 3) Chimu's "Pass it on" programme has provided funding to hundreds of local community projects in Latin America. Our aim is to empower local communities, helping them to develop their own infrastructure for the future. Since 2006, we have been working with Kiva (a well-known Non-Governmental Organisation), providing hundreds of loans to local businesses all over South America.
- 4) In our pre tour information we provide a range of tips and advice on how to minimise your impact on both local environments and communities.
- 5) Chimu Adventures' offices also take a number of sustainability measures including carbon offsets for company vehicles and most staff travel. Chimu Adventure's internal processes are also structured to create a paperless office and to reduce waste. There are also internal programmes to help staff minimise their carbon footprint such as our staff bike purchase assistance plan which encourages office staff to commute to work via bicycle. Currently almost half of our office based staff commute to work via bicycle.

### TRIP CODE

ECTSCS8A

### DEPARTURE

Selected Saturdays

### DURATION

8 Days

### LOCATIONS

Ecuador, Galapagos  
Islands

