



## INTRODUCTION

This adventure to the Canadian High Arctic and Greenland brings history to life as you navigate the frigid passages of the fabled North-west Passage. Passengers retrace the steps of the daring Franklin Expedition, which departed England's coasts in 1845 in quest of the last undiscovered section of the North-west Passage—only to become inextricably icebound—on this gripping 17-day voyage aboard our game-changing new ship Ultramarine. Its discovery by the Norwegian explorer Roald Amundsen over 150 years later was a significant turning point in polar history.

The Ultramarine offers more outdoor wildlife viewing areas than any other expedition ship of its size, two twin-engine helicopters that will give guests breathtaking aerial views of the Arctic landscape, the most extensive range of adventure options in the business, and 20 quick-launching Zodiacs that will bring you closer to historic glaciers, dramatic fjords, and towering icebergs. Discover vibrant Inuit villages and browse artisanal Inuit goods. Trek through the infinite Arctic landscape and take in the wide, vibrant tundra. Keep a watch out for the beautiful and elusive animals that call this area home, including polar bears, muskoxen, whales, and walrus. Join Ultramarine on this unforgettable voyage via the fabled Arctic sea route, and you'll leave with memories that will live with you forever.

*\*Current Discounts, promotions and pricing are available until 18 November 2024, however discounts may be withdrawn or changed at any time and are subject to availability on selected cabins and departure dates. Some current in market offers may be combinable and Shackleton Club Past Passenger and multi trip discounts may be applied subject to confirmation at the time of booking. Prices are subject to change based on currency fluctuations, fuel surcharges, and other external factors. No discount applies to any transfer packages, additional activities or pre/post services. The advertised prices may also include a 'Pay in full at time of booking' which is a 5-10% early payment discount, which requires the full balance to be paid at the time of booking to apply. Further conditions may apply, [contact us](#) for more information.*

### TRIP CODE

ACQENPLA

### DEPARTURE

26/08/2025

### DURATION

17 Days

### LOCATIONS

Greenland & Canadian Arctic



## ITINERARY

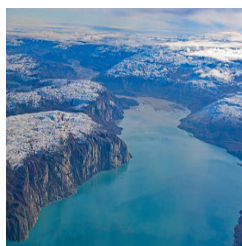
### DAY 1: Arrive in Reykjavik, Iceland

Arrive in the Icelandic capital and make your way to your included hotel. You will have the rest of the day to explore the city on your own.



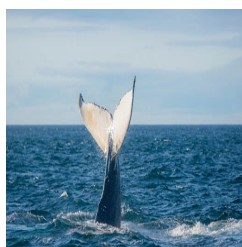
### DAY 2: Fly to Kangerlussuaq, Greenland and Embark

After breakfast, board your charter flight to Kangerlussuaq, a small community nestled deep inside a 118 mile (190 km) long fjord. Enjoy your first Zodiac ride as you're transferred from shore to ship. Out on deck, take in your new surroundings before you set sail on your Arctic adventure.



### DAY 3: Exploring West Greenland - Day 3 to 4

Cruising around the remote regions of Greenland and the Canadian Arctic aboard Ultramarine, the newest ship in our fleet, you'll navigate the same icy inlets, channels and bays that fascinated legendary explorers of long ago. Designed to give polar adventurers unprecedented access to the hardest-to-reach places on the planet—and equipped with two onboard twin-engine helicopters for unparalleled access to areas only Quark Expeditions can bring you—this one-of-a-kind ship will take you beyond the familiar in polar exploration. Throughout your journey, your Expedition Team will keep an eye toward immersing you in the best the Arctic has to offer at the top of the world. Locals call Maniitsoq the Venice of Greenland, as it's situated in an archipelago intersected by natural canals. Soaring, snow-capped mountains surround the small, rocky town, whose name means "the uneven place." Playful humpback whales spend summer in the waters around here. The Greenlandic capital of Nuuk is a haven for history and culture lovers. See for yourself the unique and thriving culture of contemporary Greenland that mingles the ancient with the modern in surprising and wonderful ways. Stroll down to the waterfront to see the Hans Egede Church and Hans Egede statue, named for the missionary who established the settlement in 1728. Marvel at the famous remains of 500-year-old fully dressed mummies, discovered under a rock outcrop in 1972 by two brothers out hunting, at the Greenland National Museum. The Nuuk Art Museum and Katuaq Culture Centre are also worth visiting.



### TRIP CODE

ACQENPLA

### DEPARTURE

26/08/2025

### DURATION

17 Days

### LOCATIONS

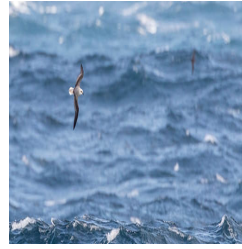
Greenland & Canadian Arctic



## CANADIAN ARCTIC - NORTHWEST PASSAGE: LEGENDARY ARCTIC SEA ROUTE | ULTRAMARINE

### DAY 5: Crossing the Davis Strait

Say goodbye to Greenland's shores as you traverse the Davis Strait in pursuit of the Canadian Arctic. Presentations by on-board experts will prepare you for the adventures that lie ahead.



#### TRIP CODE

ACQENPLA

#### DEPARTURE

26/08/2025

#### DURATION

17 Days

#### LOCATIONS

Greenland & Canadian Arctic



## CANADIAN ARCTIC - NORTHWEST PASSAGE: LEGENDARY ARCTIC SEA ROUTE | ULTRAMARINE

DAY 6: Exploring Canada's High Arctic - Day 6 to 15

Visit towering fjords, historical sites and Inuit communities as you follow in the footsteps of famous explorers from long ago in the Canadian High Arctic. At the southern tip of the Cumberland Sound, you'll visit Cape Mercy, which was named by British explorer John Davis (yes, he of the Davis Strait), who sailed through it in 1585. This is the site of an old Distant Early Warning Line installation, dating back to the Cold War. These and many other stations were set up to detect Soviet bombers. It's an ideal spot to go ashore for a hike. As icebergs travel down the Davis Strait, they're naturally trapped at Qikiqtarjuaq (formerly known as Broughton Island). The icy waters here are also home to ring and harp seals. A hike up to the hilltop inuksuk rewards with spectacular views of the community. Inuksuks are stone figures or cairns that traditionally call attention to the location for navigation, abundant harvesting or spiritual significance. Cruising further north along the mountainous east shore of Baffin Island, we'll approach Isabella Bay, an important summer and fall feeding area for the largest concentration of bowhead whales in Canada. Bowheads are a truly remarkable arctic leviathan that research has revealed may live more than 200 years of age - the oldest mammal. At the northern tip of Baffin Island, near the eastern entrance to the Northwest Passage, is the Inuit hamlet of Pond Inlet, surrounded by scenic mountains, fjords, glaciers and icebergs. Many in the community still follow a nomadic lifestyle and hunt for their food. At the top of Baffin Island sits Lancaster Sound, a true arctic oasis. Known by the Inuit and their predecessors for thousands of years, this channel and the surrounding lands are extremely rich in wildlife and history, both indigenous and European. The area around Lancaster Sound affords several hiking opportunities. At Dundas Harbour, on Devon Island, you'll visit an abandoned beachside outpost of the Royal Canadian Mounted Police. At nearby Croker Bay, cruise in a Zodiac (at a safe distance) along the face of an actively calving glacier. Your Expedition Team will also keep its eyes peeled for walrus that are known to visit the bay. Farther west, some of the best ancient Thule remains in the Arctic are at Radstock Bay, beside the soaring Caswell Towers. At the western end of Devon Island, the windswept Beechey Island is steeped in history. Named after famed British explorer Frederick William Beechey, it's a Canadian National Historic Site. You'll visit the small marked graves of three crew members who died during Sir John Franklin's tragic 1845-46 expedition. Over 150 years later, Roald Amundsen landed here in 1903, during the first successful voyage by ship through the Northwest Passage. Sailing down the east coast of Somerset Island, you may be fortunate to spot beluga whales and if you're very fortunate, narwhals, as they feed at Creswell Bay. An Important Bird Area, the bay also attracts such species as black-bellied plovers, king eiders and white-rumped sandpipers. You'll also have time to explore Fort Ross, where the Hudson's Bay Company established a now-abandoned trading post in 1937. At the midpoint of the Bellot Strait, the narrow channel that separates Somerset Island from mainland North America, you'll reach the northernmost area of the continental landmass, Zenith Point.



### TRIP CODE

ACQENPLA

### DEPARTURE

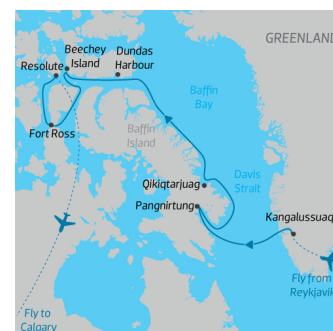
26/08/2025

### DURATION

17 Days

### LOCATIONS

Greenland & Canadian Arctic



## CANADIAN ARCTIC - NORTHWEST PASSAGE: LEGENDARY ARCTIC SEA ROUTE | ULTRAMARINE

DAY 16: Disembark in Resolute, Canada and Fly to Calgary

After disembarking in Resolute, you'll be transferred to your charter flight to Calgary, where you'll spend the night at your included hotel.



DAY 17: Depart Calgary

Today, make your way to the airport to catch your homeward flights, or spend the day exploring this unique Western Canadian city.



### INCLUSIONS & DETAILS

**Accommodation**

Cabin on board ship & Hotel

**TRIP CODE**

ACQENPLA

**DEPARTURE**

26/08/2025

**DURATION**

17 Days

**LOCATIONS**

Greenland & Canadian Arctic



## INCLUSIONS

Cabin accommodation on board ship  
 All meals, snacks, soft drinks and juices on board throughout your voyage.  
 Select beer and wine during dinner; and coffee, tea and cocoa available around the clock  
 All scheduled landings and excursions  
 Guiding and leadership by expert exploration team and crew  
 A pair of waterproof expedition boots on loan for landings and Zodiac cruising excursions  
 An Expedition parka (yours to keep)  
 Emergency Evacuation insurance for all passengers to a maximum benefit of USD \$500,000 per person  
 Greenland voyages cruise passenger tax  
**MANDATORY TRANSFER PACKAGE (INCLUDED)**  
 Includes one night pre expedition hotel accommodation in Reykjavik, Iceland & one night post expedition in Calgary, Canada  
 Group transfers from Reykjavik Hotel to airport on day 2 and Calgary Airport to Hotel post expedition  
 Charter flights between Reykjavik and Kangerlussuaq and Resolute to Calgary  
 Return group transfers between Kangerlussuaq Airport and the ship and the ship and Resolute Airport

### Inclusions

## EXCLUSIONS

International flights  
 Any other pre or post land arrangements not mentioned above  
 Passport and visa expenses  
 Canadian eTA required for non-Canadian or U.S. visa-exempt passengers  
 Government arrival and departure taxes not mentioned above  
 Baggage, cancellation, interruption and medical travel insurance—strongly recommended  
 Mandatory waterproof pants for Zodiac cruising, or any other gear not mentioned  
 Voluntary gratuity at the end of the voyage for shipboard staff and crew  
 Meals ashore unless otherwise specified  
 Excess-baggage fees on international and domestic flights  
 Laundry, bar and other personal charges unless specified  
 Phone and Internet charges (connectivity may vary by location)  
 Optional Adventure Activities

### Difficulty Rating

2 (light adventure)

### TRIP CODE

ACQENPLA

### DEPARTURE

26/08/2025

### DURATION

17 Days

### LOCATIONS

Greenland & Canadian Arctic



**CANADIAN ARCTIC - NORTHWEST PASSAGE: LEGENDARY ARCTIC SEA ROUTE | ULTRAMARINE**

<b>Single Surcharge</b>	A single supplement surcharge applies and is subject to availability. Please contact us for more information.
<b>Notes</b>	<p>Prices are based on per person, and vary from single, quad, triple, and twin cabins.</p> <p>Prices are correct at time of publishing but are subject to change at any time.</p> <p>All entrance fees are subject to change without prior notice.</p> <p>Please note this itinerary is subject to change depending on weather and ice conditions.</p> <p>Includes charter flights from Reykjavik to Kangerlussuaq and Resolute to Calgary</p>
<b>Price Dependent upon</b>	Departure date, seasonality, currency fluctuation and availability.

**SUSTAINABILITY**

<b>TRIP CODE</b>	ACQENPLA
<b>DEPARTURE</b>	26/08/2025
<b>DURATION</b>	17 Days
<b>LOCATIONS</b>	Greenland & Canadian Arctic
