



INTRODUCTION

Up to 15% off* selected cabins and departures & Arctic 2025 Stateroom Upgrade Offer**

Discover Svalbard, a place of nearly constant daylight where you can see polar bears, see walrus hauling out on sea ice, and hear guillemot calls echoing from towering cliffs. Explore the world's largest fjord, Scoresbysund, in East Greenland. You can also visit Ittoqqortoormiit, one of the most isolated Inuit settlements worldwide, cruise among icebergs sculpted into amazing shapes, and stroll through tundra covered in vibrantly coloured flowers while savouring delectable wild berries.

** Arctic 2025 & Beyond: Up to 15% on selected departures and cabins. Discounts are subject to availability and are available until 31 Dec 24 unless withdrawn prior. Discounts are not combinable with any other promotions except back-to-back voyage or loyalty discounts. Discounts and pricing are subject to change and may be withdrawn or varied at any time.*

*** Arctic 2025 Stateroom Upgrade Offer: Offer applicable on select 2025 Arctic expedition departures only. Offer applies to bookings made for Balcony Stateroom Superior at the price of a Balcony Stateroom B and Balcony Stateroom A or B at the price of a Balcony Stateroom C. Promotion is subject to availability, capacity controlled and is available until 31 Dec 24 unless withdrawn prior. Discounts are not combinable with any other promotions except Arctic & Beyond 20% or loyalty discounts. Discounts and pricing are subject to change and may be withdrawn or varied at any time.*

TRIP CODE

ACAESJA

DEPARTURE

17/07/2025

DURATION

13 Days

LOCATIONS

Svalbard, Greenland & Iceland



THE ARCTIC - JEWELS OF THE ARCTIC 2025 | SYLVIA EARLE

PLEASE NOTE: Pricing is subject to change and availability at the time of booking. [Contact us](#) for more information.

ITINERARY

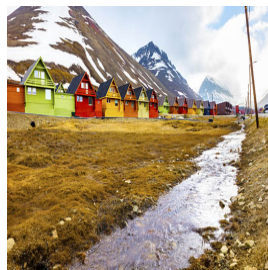
DAY 1: Arrive in Oslo

Upon arriving in Oslo, you will be greeted by a representative and transferred to our group hotel. Once at the hotel, visit the hospitality desk to collect your luggage cabin tags and speak with our ground operations team. They may provide information about pre-embarkation and offer guidance on dining options, accessing cash, or purchasing last-minute items from local shops. The rest of your day is free for leisure, and all meals are at your own expense.



DAY 2: Longyearbyen & Embarkation

This morning, please ensure your cabin luggage is fitted with cabin tags clearly labelled with your name and cabin number. Enjoy breakfast at the hotel before transferring to the airport for our charter flight to Longyearbyen for embarkation. Any valuables or personal items should be kept on you throughout the day. In Longyearbyen, explore the town on a guided excursion tour. On the drive to Camp Barentz, located in Advent Valley, your guide will give you an introduction to Longyearbyen's fascinating history. Once at Camp Barentz we enjoy a presentation in the large 'lavvo' - a traditional building common in northern Norway. You will also have the opportunity to meet the friendly huskies and perhaps pick up some souvenirs. A visit to the Svalbard Museum is included back in town before embarking the vessel in the late afternoon. After the tour, you will be transferred directly to the pier to embark in the late afternoon. Settle into your cabin before attending important safety briefings and enjoy the thrill of departure as we 'throw the lines' and set sail. Note: the excursion is contingent on the arrival time of our charter flight to Longyearbyen.



TRIP CODE

ACAESJA

DEPARTURE

17/07/2025

DURATION

13 Days

LOCATIONS

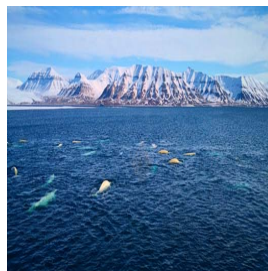
Svalbard, Greenland & Iceland



THE ARCTIC - JEWELS OF THE ARCTIC 2025 | SYLVIA EARLE

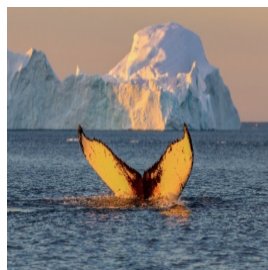
DAY 3: Svalbard - Days 3 to 4

Svalbard offers arctic wilderness at its best. The members of our experienced Expedition Team, who have made countless journeys to this area, will use their expertise to tailor our itinerary, choosing the best options based on the prevailing weather, sea-ice conditions and opportunities for wildlife encounters. Phenomenal fjords, magnificent mountains ranges, and a polar desert rich in fossils set the stage for heroic tales of early exploration. See walrus hauled-out on sea ice or on beaches. On land, we stretch our legs on walks across tundra carpeted in brightly coloured wildflowers. We visit towering cliffs noisy with nesting guillemots and puffins, and scree slopes that hold Svalbard's largest little auk colonies. Most memorable are encounters with the majestic polar bear on pack ice. Your Expedition Team is just as keen as you are to find them and they will be on constant watch to spot these inspiring creatures. If you have chosen an optional activity such as kayaking, you will have an opportunity to enjoy that activity when conditions allow. For those who are enthusiastic to participate in a polar plunge, as soon as conditions are suitable, you will hear the announcement to prepare for an exhilarating dip - a memory you will savour for years to come.



DAY 5: Greenland Sea - Days 5 to 6

As we sail towards the coast of East Greenland, we may encounter whales feeding in the rich waters of the north. As we approach East Greenland, be prepared to encounter more pack ice and perhaps spot seals and a variety of seabirds, including the northern fulmar and Brünnich's guillemot. The strong, icy currents have isolated East Greenland from the Polar Basin, attracting large numbers of fish, seals and whales. Climatic conditions and the concentration of ice in the vicinity often create thick morning fog that only vanishes in presence of the midday sun. Our experts will inform and entertain us with fascinating discussions on plants, animals, ice and heroic tales of exploration.



TRIP CODE

ACAESJA

DEPARTURE

17/07/2025

DURATION

13 Days

LOCATIONS

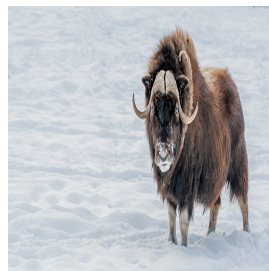
Svalbard, Greenland & Iceland



THE ARCTIC - JEWELS OF THE ARCTIC 2025 | SYLVIA EARLE

DAY 7: East Greenland - Days 7 to 11

In the coming days, a host of choices are available to us, and depending on ice and weather conditions, the east coast of Greenland is ours to explore. Our experienced Expedition Team, who have made countless journeys to this area, will use their expertise to tailor our itinerary on a day-to-day basis. This allows us to make best use of the prevailing weather, ice conditions and encounters with wildlife. We generally attempt up to two landings or Zodiac excursions per day, including cruising along spectacular ice cliffs, following whales feeding near the surface. Be prepared to experience ice - and lots of it! East Greenland contains some of the Arctic's most impressive scenery. Deep fjords and narrow channels, flanked by sharp ice-clad peaks soaring up to 2,000 metres (6,562 feet), and glaciers birthing gigantic icebergs that drift throughout the fjord system, combine to create breathtaking scenes. The tundra landscape is home to musk oxen, arctic hare and reindeer. Throughout the area there are ancient Thule archaeological sites, historical trappers' huts, and the cabins of present-day Inuit hunters. A highlight is a visit to the Inuit village of Ittoqqortoormiit, the most isolated and northernmost permanent settlement in the region, with approximately 450 inhabitants. The community has an excellent museum, gift shop, an abundance of Greenlandic sled dogs and provides the opportunity to meet the friendly locals. Explore Scoresbysund, the world's largest fjord and a favourite hunting ground of the local Inuit. Massive glaciers flow into this fjord, the birthplace of hundreds of majestic Greenland icebergs. It is a spectacular place that simply needs to be seen to be believed. North of Scoresbysund lie Kong Oskar and Kaiser Franz Josef fjords, two of the most significant fjord systems in Greenland, each one encompassing several smaller fjords and sounds. Thanks to the fertile volcanic soil and the surrounding mountains offering protection from strong winds, the area is rich in wildlife. You may spot everything from musk ox and arctic foxes to mountain hares, and even reindeer, near the fjord. Look skyward and you could catch a glimpse of birds, including the glaucous gull, black-legged kittiwake, northern fulmar, common raven and common eider. We will attempt to enter Kaiser Franz Josef Fjord, a remote and rarely visited fjord system with countless opportunities for exploration, located within the Northeast Greenland National Park. Cruising through Kong Oskar Fjord, we marvel at the geological beauty of the mountains. We will then head south along the coast of Liverpool Land, with our passage dependent on ice conditions. We stretch our legs on hikes across tundra in search of ancient graveyards and summer villages occupied 3,000 years ago by Inuit. We may see musk ox, arctic hare and reindeer grazing. The maze of calm, interconnecting waterways in this area provides excellent opportunities for sea kayaking. We will see ring seals, perhaps catch a glimpse of the elusive narwhal, and maybe even a polar bear hunting on pack ice.



TRIP CODE

ACAESJA

DEPARTURE

17/07/2025

DURATION

13 Days

LOCATIONS

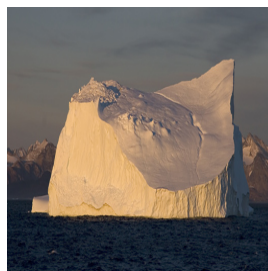
Svalbard, Greenland & Iceland



THE ARCTIC - JEWELS OF THE ARCTIC 2025 | SYLVIA EARLE

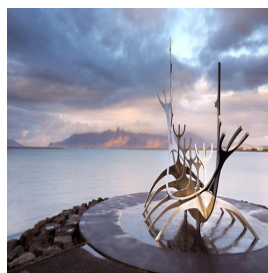
DAY 12: Denmark Strait

Crossing the Denmark Strait to Iceland, search for whale blows and photograph the many seabirds that trail our ship in the ever-present arctic winds.



DAY 13: Reykjavik & Disembarkation

During the early morning, we cruise into Reykjavik and disembark at approximately 8.00 am. Farewell your Expedition Team and fellow passengers as we all continue our onward journeys. Transfer to your downtown hotel or to Keflavik airport. Note: We do not recommend booking flights departing prior to 12.00 pm on the day of disembarkation, as we may experience delays at the conclusion of the voyage. Please note: Cruise itinerary is subject to change depending on weather conditions, ice conditions and other factors.



TRIP CODE

ACAESJA

DEPARTURE

17/07/2025

DURATION

13 Days

LOCATIONS

Svalbard, Greenland & Iceland



INCLUSIONS & DETAILS

Accommodation

Hotel & Cabin On board a Ship

THE ARCTIC - JEWELS OF THE ARCTIC 2025 | SYLVIA EARLE

INCLUSIONS

All transfers mentioned in the itinerary.
 One night's hotel accommodation including breakfast, in Oslo on Day 1.
 Sightseeing tour of Longyearbyen, prior to embarkation, on Day 2 (time permitting).
 Charter flight from Oslo to Longyearbyen on Day 2.
 Transfer from pier to hotel or airport in Reykjavik on Day 13.
 Onboard accommodation during voyage, including daily cabin service.
 All meals, snacks, tea and coffee during voyage.
 Beer, house wine and soft drinks with dinner.
 Captain's Farewell reception including four-course dinner, house cocktails, house beer and wine, non-alcoholic beverages.
 All shore excursions and Zodiac cruises.
 Educational lectures and guiding services provided by Expedition Team.
 Complimentary access to onboard expedition doctor and medical clinic (initial consultation).
 One 3-in-1 waterproof, polar expedition jacket.
 Complimentary use of Muck Boots during the voyage.
 Comprehensive pre-departure information.
 Port surcharges, permits and landing fees.
Note: A \$15 USD per person per day gratuity for the crew is automatically added to your onboard account. It is at your discretion if you would like to remove the tip (or adjust the amount) when you settle your bill. It is not necessary to tip the expedition team members. This gratuity amount is included for suites as part of their 'Suite Benefits'.

Inclusions

EXCLUSIONS

International or domestic flights not mentioned in the itinerary, unless specified in the itinerary.
 Transfers - unless specified in the itinerary.
 Airport arrival or departure taxes.
 Passport, visa, reciprocity and vaccination fees and charges.
 Travel insurance or emergency evacuation charges.
 Hotel accommodation and meals unless specified in the itinerary.
 Optional excursions and optional activity surcharges.
 All items of a personal nature including but not limited to alcoholic beverages and soft drinks (outside of dinner service), laundry services, personal clothing, medical expenses, wi-fi, email or phone charges.
 Pre or post cruise travel expenses

Difficulty Rating 2 (light adventure)

Single Surcharge Subject to availability upon request. Contact us for more details.

TRIP CODE

ACAESJA

DEPARTURE

17/07/2025

DURATION

13 Days

LOCATIONS

Svalbard, Greenland & Iceland



THE ARCTIC - JEWELS OF THE ARCTIC 2025 | SYLVIA EARLE

<p>Notes</p>	<p>Prices are based on per person, may be based on quad/triple/twin share. Prices are correct at time of publishing but are subject to change at any time. Itinerary is subject to change depending on weather and ice conditions.</p> <p><i>Note: A \$15 USD per person per day gratuity for the crew is automatically added to your onboard account. It is at your discretion if you would like to remove the tip (or adjust the amount) when you settle your bill. It is not necessary to tip the expedition team members. This gratuity amount is included for suites as part of their 'Suite Benefits'.</i></p>
<p>Price Dependent upon</p>	<p>Departure date, fuel surcharges, cabin category, currency fluctuations, seasonality and availability.</p>

SUSTAINABILITY

<p>TRIP CODE</p>
<p>ACAESJA</p>
<p>DEPARTURE</p>
<p>17/07/2025</p>
<p>DURATION</p>
<p>13 Days</p>
<p>LOCATIONS</p>
<p>Svalbard, Greenland & Iceland</p>
