

SOUTH AMERICA - SIGNATURE SOUTH AMERICA CIRCLE



INTRODUCTION

Embark on an unforgettable journey through South America on this 20-day journey. This immersive itinerary takes you through the continent's most iconic destinations, from the vibrant streets of **Lima** to the awe-inspiring ruins of **Machu Picchu**, the breath taking **Iguazu Falls**, and the cosmopolitan charm of **Buenos Aires** and **Santiago**. Experience rich cultural heritage, stunning landscapes, and world-class cuisine as you explore at a relaxed pace with expert local guides. Discover the perfect blend of adventure, history, and luxury on this carefully crafted South American adventure.

This itinerary is also available in [reverse](#), ending in Lima.

On this all-encompassing personalised itinerary, Chimu Adventures will provide travel logistics for your travel party for the duration of your journey, plus expert guides for all the major sightseeing as per itinerary. Each night you will stay in superior accommodation, handpicked by our experienced team for their creature comforts, convenient locations, and impeccable service.

ITINERARY

DAY 1: Arrive in Lima

Lima, the capital of Peru is a bustling metropolis and one of South America's largest cities. Home to a plethora of interesting museums and a foodie's delight, being the 'gastronomical capital of the Americas'.



TRIP CODE

MCCHRCS

DEPARTURE

Daily

DURATION

20 Days

LOCATIONS

Peru, Brazil, Argentina & Chile



SOUTH AMERICA - SIGNATURE SOUTH AMERICA CIRCLE

DAY 2: Lima Walking Tour

Join your local guide will take you on an exclusive half-day tour of Lima's culinary and historical highlights, designed by us to help you get the most out of the city, starting with a visit to a local market to sample some local fruit and a scenic stroll through the city's historic downtown with some tastings of famous local bites along the way. Enjoy a stop at the San Francisco catacombs, a tour of Casa de Aliaga, a stunning colonial style mansion. End your tour with a Chilcano or Pisco Sour cocktail - both are made with the local brandy, Pisco. (B)



DAY 3: Lima to the Sacred Valley

You will be transferred to the airport for your onward flight to Cusco, where you will descend into the Sacred Valley below Cusco. The Sacred Valley of the Incas is a region in Peru's Andean highlands which, along with the nearby town of Cusco and the ancient city of Machu Picchu, formed the heart of the Inca Empire. The Sacred Valley's elevation is 2,800 meters above sea level, so it's recommended to take it easy for the afternoon as your body acclimatises to the altitude. (B)



DAY 4: Sacred Valley Tour

On today's Sacred Valley of the Incas tour, you will be presented with plenty of photo opportunities of ancient Incan villages and ruins, whilst learning about the culture and beliefs of the Incan people. This tour is the perfect start to understanding the unique way of life, farming techniques, and archaeological design of the Incas. The first stop is the village of Pisac. Wander the colourful market stalls before heading uphill to the famous Pisac ruins, Intihuatana, Q'allaqasa and Kinchiracay ruins. Enjoy lunch in the gardens overlooking the Valley before continuing along the River Urubamba, to Ollantaytambo, which is dominated by a giant Incan fortress. (B,L).



TRIP CODE

MCCHRCS

DEPARTURE

Daily

DURATION

20 Days

LOCATIONS

Peru, Brazil, Argentina & Chile



SOUTH AMERICA - SIGNATURE SOUTH AMERICA CIRCLE

DAY 5: Machu Picchu

Today will be one of your highlights in South America with a visit to Machu Picchu. A transfer will collect you and transfer you to Ollantaytambo train station to board a scenic train and arrive in one of the world's most famous ruins after the morning fog and crowds have cleared. A guide will meet you on arrival and take you directly to the UNESCO World Heritage Site, where you will spend the afternoon marvelling at the stunning display of ancient architecture and incredible surroundings. located 2,430 metres above sea level, your guide will explain the 15th-century Inca site before taking you to your hotel for the night in the local village of Aguas Calientes. (B)



DAY 6: Machu Picchu to Cusco

Start your journey back to Cusco by boarding a return train to Ollantaytambo. A transfer will be waiting as you arrive back to Ollantaytambo station to continue onwards to Cusco. En route, you will visit the Maras Salt ponds, believed to pre-date the Inca period. These shallow pools, dug into the mountainside, are filled with salt water from an underground spring from an adjacent mountain. Continue to Moray, which boasts an impressive Inca ruin of giant circular terraces that are believed to have been used for agricultural experimentation. You will then be dropped to your hotel in Cusco, set at an altitude of 3,400 metres in the Peruvian Andes. (B)



DAY 7: Cusco City Tour

Join our Chimu Adventures exclusive day tour and explore the city's fascinating history. This specially designed tour has been perfected to show you the best of this incredible city without the crowds and other tourists. Learn about this city from the Inca times to colonial rule to the present day, winding through narrow cobblestoned streets and visiting the market of Cusco. Visit the fascinating Koricancha Temple of the Sun, Cusco's Plaza de Armas and Cathedral, built on the ruins of an Inca Palace and finish up at Sacsayhuaman, a former Incan fortress perched atop the hill above Cusco. (B)



TRIP CODE

MCCHRCS

DEPARTURE

Daily

DURATION

20 Days

LOCATIONS

Peru, Brazil, Argentina & Chile



SOUTH AMERICA - SIGNATURE SOUTH AMERICA CIRCLE

DAY 8: Cusco Free Day

Today is at leisure, allowing you to spend time wandering the cobble-stoned streets of the ancient Inca capital. With treasures around every corner, Cusco is a wonderful city to explore on foot. Vibrant markets and stores give the traveller a plethora of shopping opportunities set amongst fine Inca and Spanish colonial architecture. Included is a BTG ticket which provides access to most of Cusco's attractions and museums, so you choose where you wish to spend your day. (B)



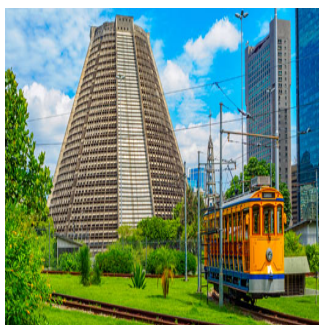
DAY 9: Rio de Janeiro

You will be collected from your hotel and transferred to the airport for your onward flight to Rio De Janeiro. Rio never fails to amaze with its sandy beaches, carefree lifestyle, and unparalleled natural beauty. (B)



DAY 10: Half Day Tour of Santa Teresa & Lapa

Join a discovery tour of Rio de Janeiro that heads to the most beloved neighbourhoods, Santa Teresa and Lapa. The bustling suburb of Lapa is famous for its nightlife, historical monuments, and the Roman-style Acros da Lapa aqueducts. Santa Teresa, which is reached via a charming tram ride over the aqueducts is known for its cobblestone streets, beautiful architecture, charming upper-class residential homes, and stunning views from the hillside overlooking the city. Enjoy a local Brazilian speciality, Acai with your local guide along the way. Finally, a visit to the famous Selaron Staircase. The colourful stairway is covered in mosaic tiles, the work of Chilean born artist Jorge Salaron. The afternoon is free for you to enjoy the beaches of Rio. (B)



TRIP CODE

MCCHRCS

DEPARTURE

Daily

DURATION

20 Days

LOCATIONS

Peru, Brazil, Argentina & Chile



SOUTH AMERICA - SIGNATURE SOUTH AMERICA CIRCLE

DAY 11: Copacabana, Corcovado & Sugarloaf Tour

With an early start, today you will join a city tour exclusively designed for our guests for taking in all of Rio's famous sights, including Corcovado, to get up close to the Christ the Redeemer statue. The next stop is Sugar Loaf Mountain, where you will board a cable car to the top of Urca Hill, with spectacular views of Rio's famous beaches, bays, hills, and the city. Enjoy a traditional Brazilian BBQ for lunch and continue exploring more of the city including to Saint Benedict Monastery, Praça Maua, Duque de Caxias Palace and the Metropolitan Cathedral. Pass by Flamengo and Botafogo beaches on your way back to your hotel. (B,L)



DAY 12: Iguazu Falls

You will be collected from your hotel and transferred to the airport for your onward flight to Iguazu Falls. Enroute to your hotel, you will visit the Brazil side of the falls to enjoy a half-day tour of the Brazilian side where you will experience great panoramic views of the Argentinian side of the falls. (B)



DAY 13: Iguazu Falls

Get ready for a full day of exploring the Argentine side of the falls. We start early to beat the crowds and get the first train to the Devil's Throat. Walk along the paths over the islands which take you to a balcony over the falls and the most spectacular view of the entire Devil's Gorge. You will then have plenty of time to walk the paths on the upper circuit, providing you with a magnificent panoramic view, and the lower circuit, which has great views from below and around the falls. On completion of the tour, you will be taken to your hotel. (B).



TRIP CODE

MCCHRC5

DEPARTURE

Daily

DURATION

20 Days

LOCATIONS

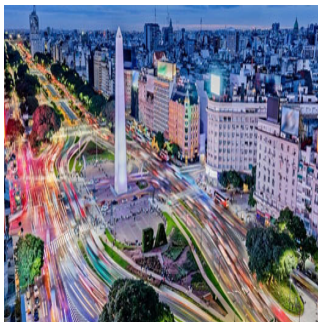
Peru, Brazil, Argentina & Chile



SOUTH AMERICA - SIGNATURE SOUTH AMERICA CIRCLE

DAY 14: Fly Iguazu to Buenos Aires

You will be collected from your hotel and transferred by private transfer to the airport to meet your flight to Buenos Aires. On arrival, a driver will be waiting to transfer you to your hotel in one of Buenos Aires' most elegant, historic, and picturesque neighbourhoods, Recoleta. (B)



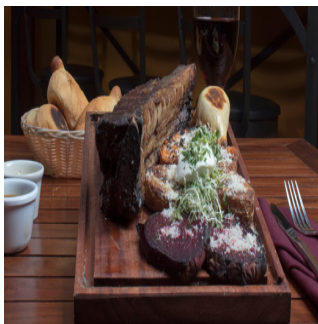
DAY 15: Buenos Aires City Tour

The morning is at leisure before you are collected from your hotel for a three hour afternoon city tour. We have designed this tour exclusively for our guests. You will visit the main square; Plaza De Mayo, home to the famous Casa Rosada and then continue on to the charming suburb of La Boca - the birthplace of Tango where you will have some time to wander the streets. Then head to Recoleta Cemetery, one of the most beautiful in the world. Entrance is included and your guide will point out the graves of famous Argentinian's such as Eva Peron, or Evita. (B).



DAY 16: Walking with a Local Tour & Evening Asado Dinner

You will be collected from your hotel in the afternoon for a unique half day walking tour with your own local guide. You will start by exploring the streets of the upscale and exclusive neighbourhood of Recoleta through a local's eyes. Continue on through the beating heart of the city, Retiro, home to many significant government buildings filled with fascinating history of Buenos Aires. Chat with your guide over a local Patagonian Ice Cream or a Coffee, before heading over to the bohemian barrio of San Telmo to explore the local markets, tasting local specialties like Empanada's. You will also visit an old Conventillo and the quaint Plaza Dorrego. In the evening you will be collected from your hotel and transferred to an Asado restaurant where you will enjoy a traditional Argentinian steakhouse. A closed-door dining experience awaits you that explores new ways of serving Argentine Asado classics, along with a wine pairing menu that has also been designed to best enhance the flavours of the ingredients while presenting you with some of the best boutique wines from Argentina. (B,D).



TRIP CODE

MCCHRCS

DEPARTURE

Daily

DURATION

20 Days

LOCATIONS

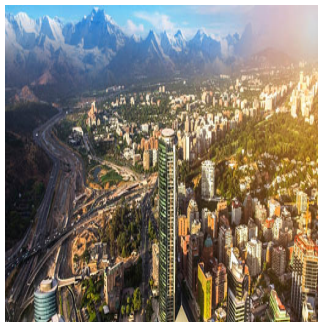
Peru, Brazil, Argentina & Chile



SOUTH AMERICA - SIGNATURE SOUTH AMERICA CIRCLE

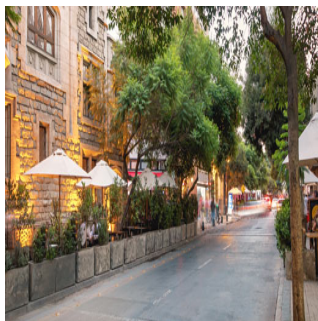
DAY 17: Fly Buenos Aires to Santiago

You will be transferred to the airport for your onward flight to the Chilean capital of Santiago, surrounded by the snow-capped mountains of the Andes and the Chilean Coastal Range. You will be collected from the airport and transferred to your hotel by private car transfer. The rest of the day is yours to recover. (B)



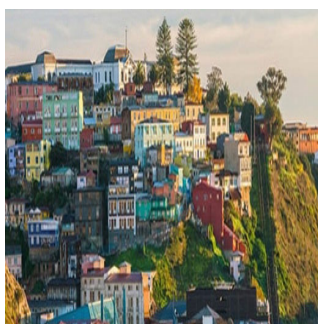
DAY 18: Santiago

Spend your morning getting to know Santiago on a half-day city tour. You will visit the highlights that this cosmopolitan city has to offer. The rest of the afternoon is free for you to explore the local area near your hotel. Barrio Lastarria is an upmarket, vibrant, and safe neighbourhood, home to some of Santiago's best cafes, bars, and restaurants, with lots of boutique retail stores. In the evening enjoy a local Chilean dinner in a private apartment. This is a family styled dinner, shared with other like minded guests and includes wine and local drinks. This is an exclusive experience not to be missed! (B,D)



DAY 19: Valparaiso & Casablanca Valley

Today you will join a small group tour to head towards the Chilean coastline. Your first stop is the charming Valparaiso. This city has been declared a UNESCO World Heritage site and many of its colourful buildings perch in a haphazard fashion on the hillside. You will take a walk to discover the local art galleries and street art which embody Valparaiso's bohemian lifestyle, including visiting one stairwell which claims, "we are not hippies, we are happier." You will also take a ride on one of the city's remaining funiculars. Then it is on to the Casablanca Valley. This region is famous for wine production, in particular Chardonnay, Sauvignon Blanc and Pinot Noir varieties. You will visit a cellar door for a premium wine tasting and have the chance to purchase some wines and other souvenirs. (B)



TRIP CODE

MCCHRCS

DEPARTURE

Daily

DURATION

20 Days

LOCATIONS

Peru, Brazil, Argentina & Chile



SOUTH AMERICA - SIGNATURE SOUTH AMERICA CIRCLE

DAY 20: Depart Santiago

You will be collected from your hotel at the appropriate time and transferred to the airport for your onward flight. (B)



TRIP CODE
MCCHRCS
DEPARTURE
Daily
DURATION
20 Days
LOCATIONS
Peru, Brazil, Argentina & Chile

INCLUSIONS & DETAILS

Accommodation	Hotels
Inclusions	<p>INCLUSIONS</p> <ul style="list-style-type: none"> Private airport/hotel transfers throughout Internal flights as part of the itinerary (based on LATAM Airpass which must be combined with LATAM international flights) Accommodation with breakfast daily Sightseeing with local English-speaking guide as stated Other meals where stated Most entrance/National Park fees <p>EXCLUSIONS</p> <ul style="list-style-type: none"> International flights and internal flights other than where specified Visa & reciprocity fees (if applicable) Travel insurance Beverages Personal expenses Gratuities for tour guides/drivers Any items not mentioned as included
Difficulty Rating	2 (Light Adventure - High Altitude In Some Areas)
Single Surcharge	A single supplement surcharge applies and is subject to availability. Please contact us for more information.
Notes	<p>Prices are based on per person, twin share.</p> <p>Prices are correct at time of publishing but are subject to change at any time.</p> <p>All entrance fees are subject to change without prior notice.</p>



SOUTH AMERICA - SIGNATURE SOUTH AMERICA CIRCLE

Price Dependent upon Currency fluctuation, seasonality and availability at time of booking.

SUSTAINABILITY

TRIP CODE

MCCHRCS

DEPARTURE

Daily

DURATION

20 Days

LOCATIONS

Peru, Brazil, Argentina & Chile

