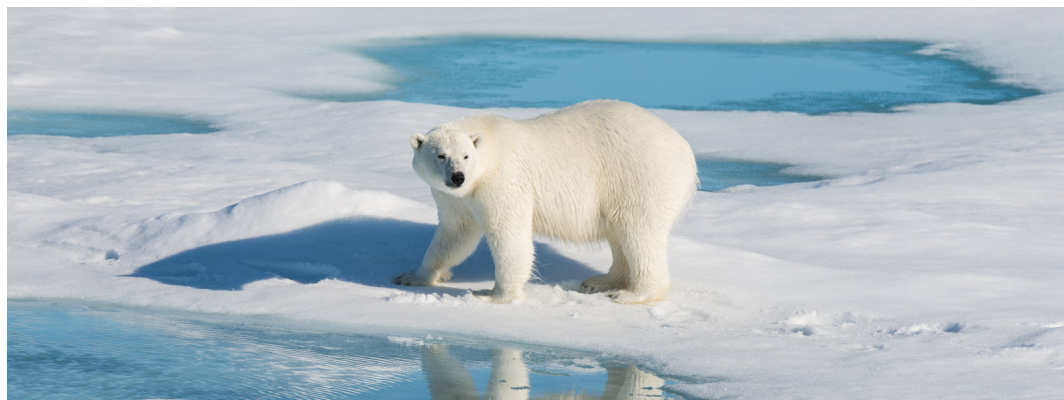


## THE ARCTIC - THE GEOGRAPHIC NORTH POLE & EAST GREENLAND 2027 | LE COMMANDANT CHARCOT



### TRIP CODE

ACPO18NP

### DEPARTURE

10/07/2027

### DURATION

18 Days

### LOCATIONS

Spitsbergen, Geographic North Pole, Greenland

## INTRODUCTION

Go for 90 degrees North and push the limits of navigation! You will gradually make your way into the centre of the ice floe in pursuit of the Geographic North Pole aboard Le Commandant Charcot, the unique vessel that can rise to the occasion. On the trip north, Eastern Greenland will show off its magnificent fjords, Inuit customs, and possibly even the stunning Northern Lights before arriving at the Holy Grail of all polar explorers - the North Pole. On the way back, you will sail along Spitsbergen, Europe's largest ice cap and the remote country of polar bears. This is a unique journey through the unspoiled magnificence of the world's peripheries.

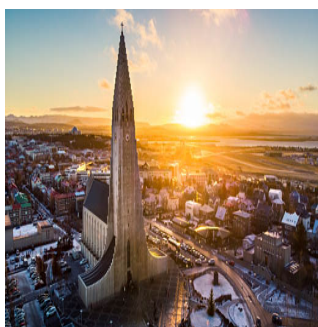
**This expedition also runs in reverse. Please contact Chimu Adventures for dates, availability and cabin prices.**



## ITINERARY

### DAY 1: Arrive Reykjavik

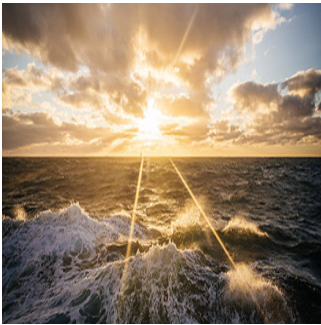
Iceland's capital stretches along the edge of a vast bay in the west of the country. Perlan, the "Pearl of Reykjavík", a museum located on 'Oskjuhlíð hill, offers a panoramic view of the lush, green landscapes. A little further, one can easily spot the signpost showing the way to the evangelical Hallgrímskirkja church, and to the historical centre where one can stroll along the Skólavörðustígur and the Laugavegur, two lively streets with charming small shops. For some relaxation just outside of the city, visitors have the opportunity to visit the Reykjanes peninsula and its famous thermal lagoons of the Blue Lagoon. Embarkation will be around 4:00 pm to 5:00 pm and departure at 6:00 pm.



# THE ARCTIC - THE GEOGRAPHIC NORTH POLE & EAST GREENLAND 2027 | LE COMMANDANT CHARCOT

## DAY 2: At Sea

Spend exceptional moments sailing aboard Le Commandant Charcot, the world’s first luxury polar exploration vessel and the first PC2-class polar cruise ship capable of sailing into the very heart of the ice, on seas and oceans which the frozen conditions render inaccessible to ordinary ships. Le Commandant Charcot is fitted with oceanographic and scientific equipment selected by a committee of experts. Take advantage of the on-board lectures and opportunities for discussion with these specialists to learn more about the poles. Participate in furthering scientific research with PONANT and let us discover together what these fascinating destinations have yet to reveal to us.



## DAY 3: Exploring the Blosseville Coast

Aboard your ship, follow in the footsteps of Jules Poret de Blosseville, a French explorer and sailor. In 1833, he set off to discover this isolated and unexplored part of eastern Greenland aboard La Lilloise, an adventure with a fatal outcome. The uninhabited territory that bears his name lies to the south of Scoresby Sound. Surrounded by ice, icebergs and pack ice - thin or thick, flat or pronounced - as far as the eye can see, Blosseville Coast is a wild and distant place to which very few people have access. Exploring it means a slow immersion into the heart of a frozen, almost unreal desert, where the variations in light transform one’s perception of the landscape. In the kingdom of the polar bears, Le Commandant Charcot, a silent ship open to the exterior, will offer exceptional moments observing Arctic wildlife, through a series of encounters.



### TRIP CODE

ACPO18NP

### DEPARTURE

10/07/2027

### DURATION

18 Days

### LOCATIONS

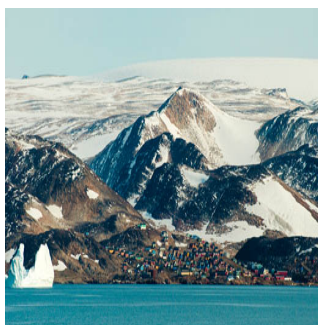
Spitsbergen, Geographic North Pole, Greenland



## THE ARCTIC - THE GEOGRAPHIC NORTH POLE & EAST GREENLAND 2027 | LE COMMANDANT CHARCOT

### DAY 4: Ittoqqortoormiit Region - Day 4 & 5

On the East coast of Greenland, in the Ittoqqortoormiit region that is covered with snow and ice for nine months of the year, you will have the rare opportunity of immersing yourself in the heart of an isolated territory and exploring the beauty of its infinite polar whiteness. The high alpine mountains punctuate the sky and gradually reveal their dark rock edges beneath a coat of snow. Located at the entrance to the longest system of fjords in the world, sits the village of Ittoqqortoormiit, one of the northernmost inhabited places on the East coast. Its name means 'great house' in Greenlandic and it is home to the last hunters of the polar region, whose ancestral way of life you will encounter. As soon as the thickness of the ice floe allows it, the hunters set out on the trail of walruses, seals, narwhals, musk oxen and polar bears, travelling by traditional dog sleds. On these expanses of immaculate snow, the silence is broken only by the sounds of the dogs, the grating of a sled coming back from a run or of footsteps on the ice. You will discover Inuit traditions through privileged and festive moments on the ice floe and in the village.



#### TRIP CODE

ACPO18NP

#### DEPARTURE

10/07/2027

#### DURATION

18 Days

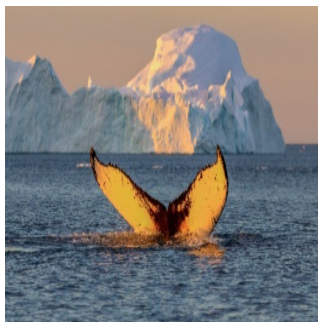
#### LOCATIONS

Spitsbergen, Geographic North Pole, Greenland



### DAY 6: Sailing along Greenland

The north-east of Greenland is renowned for being home to one of the oldest and thickest layers of ice on the planet. Aboard your ship, you will have the unique opportunity of sailing to the heart of this icy wilderness, many thousands of years old, and will travel along one of the world's most isolated coasts, between drifting ice and blue icebergs.



### DAY 7: Navigating through the sea of ice

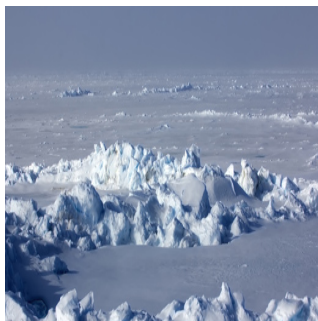
Enjoy the absolutely unique experience of sailing to the heart of the ice floe, this vast expanse of virgin, immaculate ice. The landscapes are constantly changing, shifting from a smooth, flat wilderness to a chaos of ice, then to channels of open water. Your ship will sail along these naturally open channels and through the areas where the frozen layer is thinnest, offering you the chance to experience magic maritime moments in the midst of drifting sea ice. It will also often be an opportunity to see a particular kind of fauna, totally dependent on the ice floe.



## THE ARCTIC - THE GEOGRAPHIC NORTH POLE & EAST GREENLAND 2027 | LE COMMANDANT CHARCOT

### DAY 10: The Geographic North Pole

Defined by a 90° North latitude, the Geographic North Pole lies on the Earth's rotational axis, at the intersection of all meridians. Plunged into darkness for six months of the year, then lit by the sun for the following six months, this mythical site, permanently covered in ice and remote from any land, has fascinated generations of explorers. So far, only a very few people have ever reached it: an exploit which is now accessible to you aboard Le Commandant Charcot.



### DAY 12: Navigating through the sea of ice - Day 12 to 14

Enjoy the absolutely unique experience of sailing to the heart of the ice floe, this vast expanse of virgin, immaculate ice. The landscapes are constantly changing, shifting from a smooth, flat wilderness to a chaos of ice, then to channels of open water. Your ship will sail along these naturally open channels and through the areas where the frozen layer is thinnest, offering you the chance to experience magic maritime moments in the midst of drifting sea ice. It will also often be an opportunity to see a particular kind of fauna, totally dependent on the ice floe.



#### TRIP CODE

ACPO18NP

#### DEPARTURE

10/07/2027

#### DURATION

18 Days

#### LOCATIONS

Spitsbergen, Geographic North Pole, Greenland





THE ARCTIC - THE GEOGRAPHIC NORTH POLE & EAST GREENLAND 2027 | LE COMMANDANT CHARCOT

DAY 15: North-West Region on Spitsbergen

A kingdom of contrasts and natural marvels dotted with islands and peninsulas, northwest Spitsbergen fascinates with its preserved beauty. On these pristine lands, infinity unveils itself, treating the eyes to beauty sculpted by nature and enhanced by the changing light. The fjords bathed by icy waters, the jagged mountains and the imposing glaciers stand majestically before you, like monumental sculptures. In these lands, where souls are filled with deep serenity, only the murmur of broken ice, bearing mysteries and legends, disturbs the calmness. Aboard our Zodiacs and in the company of naturalist-guides, get as close as possible to this unique fauna and discover this centre for scientific expedition departures. In the distance, majestic whales glide silently through the glacial waters, whereas seals, walrus and Arctic foxes add a playful touch of life. As Svalbard reindeer wander the vast expanses, Arctic terns liven up the polar sky with their gracious flight and polar bears, which you may be lucky enough to see, patrol magnificently along the icy shores.



DAY 18: Longyearbyen

Arrive early morning in Longyearbyen and disembark around 8am to fly to Paris. Longyearbyen is the capital of the Norwegian Svalbard archipelago, located on Svalbard’s main island, and is the northernmost territorial capital on the planet. With winter temperatures dropping to below 40°C, the landscapes of this mining town are simply breathtaking. The glaciers, the mountains stretching as far as the eye can see and the untouched nature, make you feel like you’re in completely unexplored territory.



TRIP CODE

ACPO18NP

DEPARTURE

10/07/2027

DURATION

18 Days

LOCATIONS

Spitsbergen, Geographic North Pole, Greenland




INCLUSIONS & DETAILS

Accommodation

Cabin on board a ship

Inclusions	<b>INCLUSIONS</b> Meet and greet at the port by our local English-speaking representative Cabin accommodation whilst on board Le Commandant Charcot Group transfer from pier to airport after disembarkation Flight Longyearbyen to Paris on Disembarkation Day All meals whilst on board including snacks Open Bar (excluding premium brands) Room Service & Mini Bar (excluding Champagne) All scheduled landings and excursions, conditions permitting Guiding and lectures by expedition team Complimentary Polar expedition jacket (yours to keep) Free use of rubber boots for shore excursions All port taxes Comprehensive pre and post voyage informational material Free WIFI
	<b>EXCLUSIONS</b> Airfares other than specified Pre and post land arrangements and accommodation Visa and reciprocity fees (if applicable) Travel Insurance Personal expenses such as laundry Gratuities for the crew (recommend US\$15 per person per day) Optional Activities whilst on-board
Difficulty Rating	2 (Light Adventure)
Single Surcharge	Available upon request. A supplement surcharge may apply and is subject to availability. Please <a href="#">contact us</a> for more information.
Notes	One way flight from Longyearbyen to Paris is included in cruise cost. We highly recommend to arrange at least one night in Paris post expedition Prices are based on per person, twin share* (unless otherwise stated for triple/quad cabins) Prices are correct at time of publishing but are subject to change at any time Itinerary is subject to change depending on weather and ice conditions
Price Dependent upon	Departure date, fuel surcharges, cabin category, currency fluctuations, seasonality and availability.

TRIP CODE
ACPO18NP
DEPARTURE
10/07/2027
DURATION
18 Days
LOCATIONS
Spitsbergen, Geographic North Pole, Greenland


## SUSTAINABILITY