




## INTRODUCTION

This Arctic voyage begins in Reykjavík before sailing west toward the wild coastline of Greenland, where dramatic fjords, remote settlements and immense ice landscapes shape the journey. After a day at sea to settle into ship life, the adventure begins along Greenland's east coast with visits to places like Tasilaq and scenic cruising through fjords filled with drifting icebergs and towering mountain backdrops.

As the voyage continues south and then north along the coast, each stop offers a different glimpse of life in the Arctic. Wander small villages with colourful houses, visit Viking ruins set among green valleys and sail through narrow waterways framed by glaciers and waterfalls. Further north, the scale of Greenland becomes even more striking, with iceberg filled bays, powerful glaciers and opportunities to spot whales and Arctic wildlife. The journey finishes in Kangerlussuaq, leaving you with a vivid sense of the Far North's raw beauty, quiet communities and ever changing polar landscapes.

## ITINERARY


<b>TRIP CODE</b>
ACPOEISH
<b>DEPARTURE</b>
30/07/2027
<b>DURATION</b>
14 Days
<b>LOCATIONS</b>
Greenland


**THE ARCTIC - EXPEDITION TO THE EDGE ICE SHEET 2027 | L'AUSTRAL**

**DAY 1: Arrival & Embarktion from Reykjavik - Day 1-2**

Iceland’s capital stretches along the edge of a vast bay in the west of the country. Perlan, the “Pearl of Reykjavík”, a museum located on ‘Oskjuhlíð hill, offers a panoramic view of the lush, green landscapes. A little further, one can easily spot the signpost showing the way to the evangelical Hallgrímskirkja church, and to the historical centre where one can stroll along the Skólavörðustígur and the Laugavegur, two lively streets with charming small shops. For some relaxation just outside of the city, visitors have the opportunity to visit the Reykjanes peninsula and its famous thermal lagoons of the Blue Lagoon. Embarkation from 4:00 pm to 5:00 pm and departure at 12:00 am.



<b>TRIP CODE</b>
ACPOEISH
<b>DEPARTURE</b>
30/07/2027
<b>DURATION</b>
14 Days
<b>LOCATIONS</b>
Greenland


**DAY 3: At Sea**

During your journey at sea, make the most of the many services and activities on board. Treat yourself to a moment of relaxation in the spa or stay in shape in the fitness centre. Depending on the season, let yourself be tempted by the swimming pool or a spot of sunbathing. This journey without a port of call will also be an opportunity to enjoy the conferences or shows proposed on board, depending on the activities offered, or to do some shopping in the boutique or to meet the PONANT photographers in their dedicated space. As for lovers of the open sea, they will be able to visit the ship’s upper deck to admire the spectacle of the waves and perhaps be lucky enough to observe marine species. A truly enchanted interlude, combining comfort, rest and entertainment.



## THE ARCTIC - EXPEDITION TO THE EDGE ICE SHEET 2027 | L'AUSTRAL

### DAY 4: Tasiilaq & Sermilik Fjord

In Tasiilaq, on Ammassalik Island, follow in the wake of Captain Jean-Baptiste Charcot's famous ship, the *Pourquoi Pas ?*, which set off with its crew in 1935 to discover this small island of primitive and wild beauty that remained unexplored until the end of the 19th century. Along with Ittoqqortoormiit, a village with 500 inhabitants located at the entrance of the Scoresby Sound, the village of Tasiilaq and its surroundings, 800 kilometres (500 miles) further north, are the only inhabited areas on the east coast of Greenland. The name of this island is a reference to the capelin, a small flamboyant silver-coloured fish whose presence in the thousands announces to inhabitants the return of spring. A surprising discovery in a spectacular setting. You will be captivated by the spectacular scenery of the Sermilik Fjord, the largest in the south-east of Greenland. To the north, above the glacial valleys, the Schweizerland Alps and their peaks that rise to an altitude of more than 3,000 metres (10,000 feet) stretch out in the distance, while in the south, where it opens onto the Irminger Sea, heavy erosion has carved the landscape. Three main glaciers calve a multitude of dazzling icebergs that drift serenely along the indigo waters of this majestic fjord. It owes its name to the Inuit word Sermilik, which generally refers to a fjord into which a glacier flows. It was mapped in 1884 by the Danish explorer Gustav Holm and his crew, while they wintered in the Ammassalik region.



### DAY 5: Skjoldungen

Discover Skjoldungen Island on the south-east coast of Greenland. This uninhabited land boasts magnificent landscapes that are sure to dazzle you. The island is surrounded by a stunning fjord, a distinctive feature of which is its double entrance: it forms a bend before joining the sea on the other side. Mountains, glacial valleys, rocky outcrops, tundra and willow forests make up the beautiful scenery which you will be able to admire more closely when you land here. At this port of call, surrounded by wild and pristine nature, it is quite common to see bearded seals, orcas, but also birds such as the common redpoll, the northern wheatear, or the common raven.



#### TRIP CODE

ACPOEISH

#### DEPARTURE

30/07/2027

#### DURATION

14 Days

#### LOCATIONS

Greenland



**THE ARCTIC - EXPEDITION TO THE EDGE ICE SHEET 2027 | L'AUSTRAL**

**DAY 6: Prins Christian Sund**

Your ship glides silently towards the Greenland coast, in a setting punctuated by pointed peaks and majestic glaciers... You are on the verge of crossing the Prins Christian Sund, a narrow channel that stretches out and zigzags over some one hundred kilometres between Greenland's south-east and south-west. Fall under the spell of the primitive beauty of these unique landscapes, including rocky cliffs and waterfalls that are fed by the ice sheet and plunge into the icy waters. Here, bearded seals love to lie on the floating ice to soak up the sunshine.



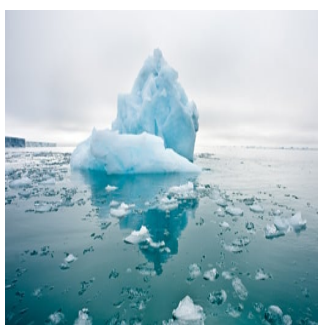
**DAY 7: Hvalso & Igaliku**


Around you, a grassy meadow filled with flowers stretches out, dotted with imposing granite rocks. A few semi-wild sheep and horses greet you; they are the only inhabitants of this place surrounded by beautiful mountains. You are in Hvalsø, in the heart of the fertile lands in Greenland's south. During the 10th century, this site was colonised by the Vikings, who established a large community here. When your ship calls at these lands brimming with history, you will see the ruins of a church whose remains are still very well preserved. It was most likely built in the 14th century. It has lost its timber roof, but its four stone walls continue to stand proudly as a moving relic of a long-gone era. Nestling on the southern tip of Greenland, Igaliku offers a peaceful panorama, dominated by high snow-capped mountains and vibrant valleys of flowers on fine days. Home to the first Viking agricultural settlements, this bucolic village houses the remains of the Garðar religious site, a UNESCO World Heritage Site.



**DAY 8: Ikka Fjord**

As you sail through the majestic Ikka Fjord in south-west Greenland, you will discover over 10,000 years of underwater geology, for mysterious columns up to 20 metres high, formed several millennia ago, rise up from the seabed. Their material, ikaite, gives the fjord its name. Truly magical! You glide over calm, clear waters amidst breathtaking mountains in the endlessly wild, huge area of Greenland.



<b>TRIP CODE</b>
ACPOEISH
<b>DEPARTURE</b>
30/07/2027
<b>DURATION</b>
14 Days
<b>LOCATIONS</b>
Greenland


## THE ARCTIC - EXPEDITION TO THE EDGE ICE SHEET 2027 | L'AUSTRAL

### DAY 9: Nuuk

When Erik Le Rouge, the exiled Norse chief, landed on the coast of Nuuk, he found a fertile and welcoming land dotted with fjords. He settled there with a group of his former countrymen, and the Norse remained the principal inhabitants until, over a period of 500 years, their population declined and gave way to the Inuit. Nuuk is situated at the mouth of one of the largest networks of fjords in the world, where the waters never freeze. The town spreads gently out towards the Davis Strait and enjoys an historic center that is particularly rich in national heritage. The vivid reds, blues, greens and yellows of the houses are a lively contrast to the somber waters of Greenland and serve to lift the spirits of the locals during the Winter months.



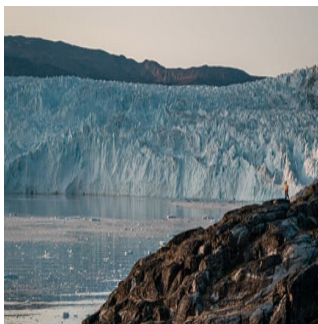
### DAY 10: Sisimiut

During your cruise, we invite you to discover Sisimiut, founded in 1756 and the second largest town in Greenland. This small town is typical of Greenland, boasting bewitching panoramas: here and there, colourful stilt houses dot the undulating landscape, and the small fishing port stands as the gateway to an icy realm. As for the town centre, it is home to a number of historic buildings, a small church and a museum which retraces the history of the Inuit people, as well as many craft shops. When your ship drops anchor here, you will set out to meet the locals in a typically arctic atmosphere.



### DAY 11: Eqi Glacier

'The most beautiful place in the Arctic' is how Paul-Émile Victor described Greenland, a land of great icebergs and of towering ice formations calved by the giant glaciers of the polar ice cap. The Eqi Glacier is one of the region's most impressive sights. Here, the silence is broken only by the roaring and cracking of the ice. It is impossible to know if one is shivering from cold or from the sheer thrill of being here... Imagine the vast outline of a glacier, its translucent crystals glowing with an ice-blue fire in the sunlight. Paul-Émile Victor's shelter cannot be overlooked; it was from here that the French Polar Expeditions' anthropological and geographic explorations set off in the 1950s.



#### TRIP CODE

ACPOEISH

#### DEPARTURE

30/07/2027

#### DURATION

14 Days

#### LOCATIONS

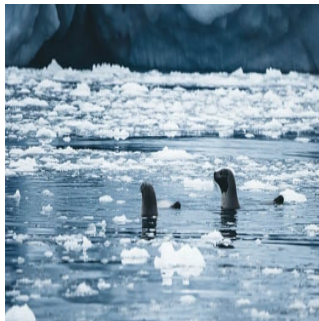
Greenland



**THE ARCTIC - EXPEDITION TO THE EDGE ICE SHEET 2027 | L'AUSTRAL**

**DAY 12: Disko Bay**

To the east of Baffin Bay, discover Disko Bay, scattered with countless icebergs produced by the Ilulissat Icefjord, a UNESCO World Heritage Site. From your ship, admire the majestic ballet of these ice giants as they slowly drift across the dark waters. This site is a natural marvel of Greenland, and is also renowned as an observation point for the region's many humpback whales. The encounters with wild fauna and stunning landscapes in the heart of this spectacular and fragile nature will be pure moments of wonder for you.



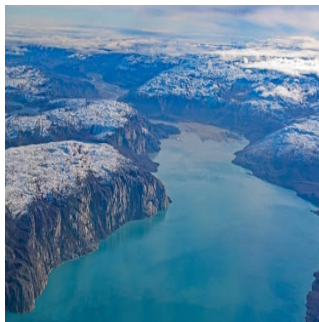
**DAY 13: Nooralak**


Located a few kilometres away from the Arctic Circle, the Nooralaq peninsula features raw and untamed beauty. Nature reigns supreme here, with the tundra stretching as far as the eye can see, decked out in various forms of flora and inhabited by Greenland's emblematic fauna — snow buntings, common ravens, reindeer, musk oxen, and the discreet Arctic fox. The heights of Nooralaq afford sublime panoramas over the Itteleq fjord, whose water reflects the moving skies of the Far North.



**DAY 14: Disembarkation in Kangerlussuaq**

From 1941 to 1992, the town of Kangerlussuaq in Greenland was home to an American military base. Nowadays, thanks to its international airport, it has become a transit point for travellers seeking adventure in the Far North. Located to the north of the Arctic Circle, this town is the starting point of magnificent discoveries surrounded by unspoiled nature. Indeed, just a few dozen kilometres from there it is possible to get close to the Greenland ice sheet, the largest body of ice in the Northern Hemisphere. From Kangerlussuaq, admire also the superb landscapes of tundra in autumnal colours, where Arctic hares, musk oxen, Arctic foxes, reindeer, falcons and eagles live. \*Please note: Cruise itinerary is subject to change depending on weather conditions, ice conditions and other factors.



<b>TRIP CODE</b>
ACPOEISH
<b>DEPARTURE</b>
30/07/2027
<b>DURATION</b>
14 Days
<b>LOCATIONS</b>
Greenland


## INCLUSIONS & DETAILS

**Accommodation** Cabin on board a ship

### INCLUSIONS

Cabin accommodation on board ship  
 All meals whilst on board  
 Charter flight Kangerlussuaq/Paris on Disembarkation Day  
 Transfers from vessel to airport  
 Guiding and lectures by experienced expedition crew  
 Unlimited Open bar & included Mini bar  
 Free WiFi on board

**Inclusions**

### EXCLUSIONS

International flights  
 Pre and post land arrangements and accommodation in Paris  
 Any optional activities not mentioned in itinerary  
 Visa and reciprocity fees (if applicable)  
 Travel Insurance  
 Any Personal Expenses  
 Optional tipping/gratuities

**Difficulty Rating** 2 (Light Adventure)

**Single Surcharge** Available upon request, a supplement surcharge applies and is subject to availability. Please [contact us](#) for more information.

Prices are based on per person, and vary from twin share cabins.  
 Prices are correct at time of publishing but are subject to change at any time.  
 All entrance fees are subject to change without prior notice.

**Notes** Please note this itinerary is subject to change depending on weather and ice conditions.\*

In rare and unforeseen situations, an operator may apply a fuel surcharge after your booking has been confirmed and paid. This is outside our control and uncommon, but transparency with our travelers is important to us.

**Price Dependent upon** Departure date, fuel surcharges, cabin category, currency fluctuations, seasonality and availability.

### TRIP CODE

ACPOEISH

### DEPARTURE

30/07/2027

### DURATION

14 Days

### LOCATIONS

Greenland



## SUSTAINABILITY